

9004

# Upper East Side, Manhattan

## LOCATION

New York, NY 10128

## SPECS

Seated Capacity Library: 100

Seating Capacity Refectory: 80

## TAGS

Classic Grand, Elevator, Fireplace, Historic, Library Room, Living Room, Ornate, Parquet, Piano, Staircase, Traditional, Wood Floor

## CATEGORIES

\* In the Zone, Event Space, Library / Museum, Lobby, Mansion

## Notes

Based on Italian Renaissance, this mansion shares many characteristics with Italian palazzi, such as the "L-shaped" floor plan, the courtyard, the window enframements, and the heavy stone cornice that crowns the building. The House was designated a New York City Landmark in 1974, and is considered by many architectural historians to be one of the most distinguished examples of early 20th century residential architecture in New York City.

4 floors, 2 elevators, very film friendly, no AC.

2 top 2 floors are used as a hotel.

Industrial kitchen 1st floor (not for shoots unless specified and additional fee paid and available).

### **Restrictions:**

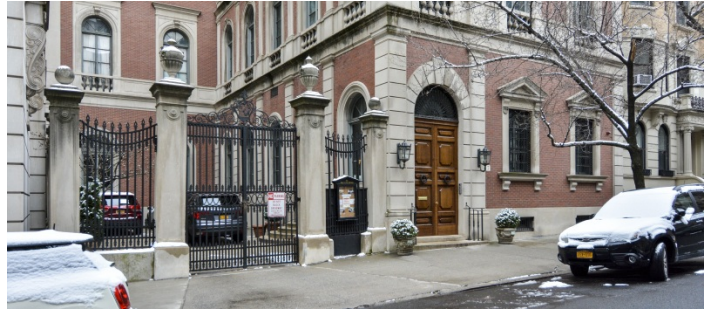
Some of the art is not moveable.

Chapel has additional restrictions for shooting.

Movement of any furniture (including books) or artwork must be approved and discussed with the house manager prior to moving and all plugging in of equipment must be handled by the house super.

This is an old building and has to be treated delicately - please protect floors and furniture.

All shoots require security deposit.

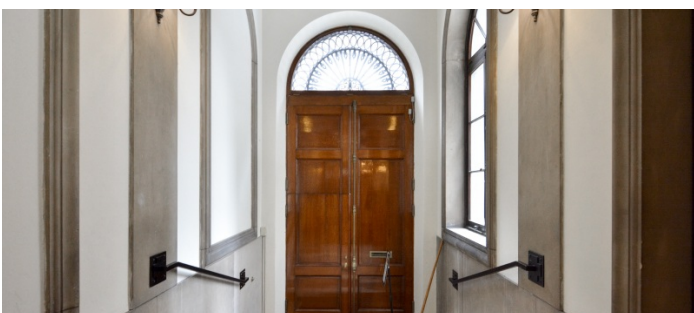
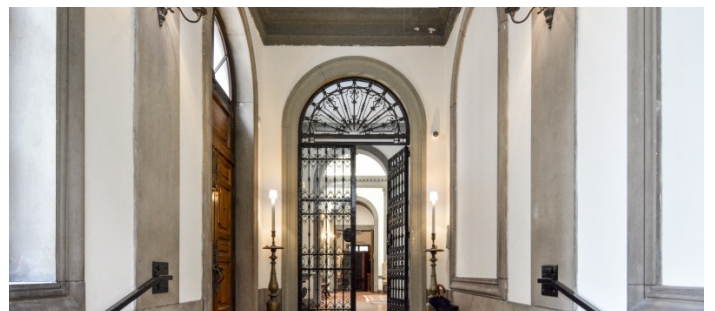
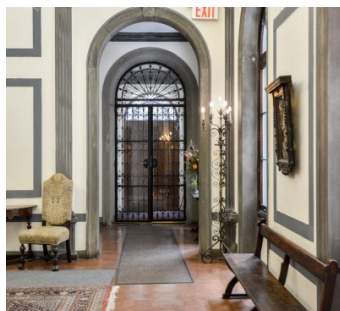
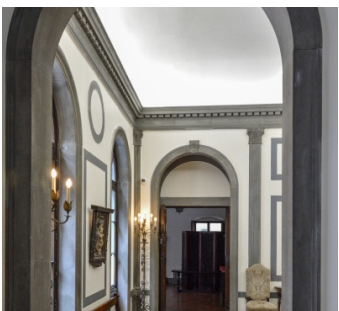
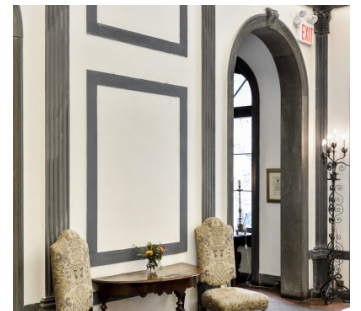
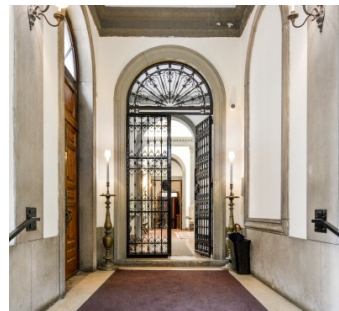
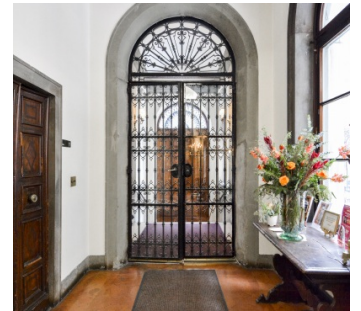






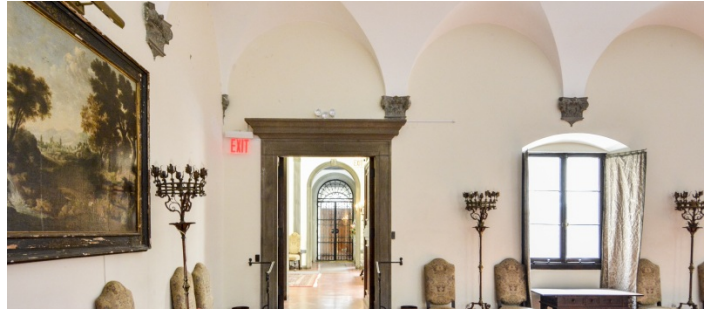
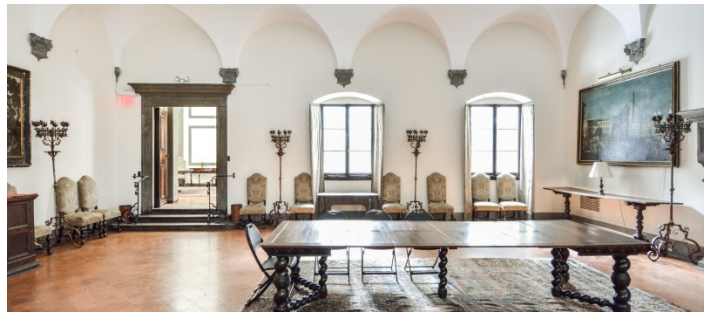












## THE RECEPTION ROOM





