

1490

# Soho, Manhattan

 LOCATION

New York, NY

 SPECS

2,800 sq ft

 TAGS

Bathroom, Bedroom, Deck, Exposed Beam, Exposed Brick, Kitchen, Living Room, Masculine, Modern Contemporary, Terrace Patio, Wood Floor

 CATEGORIES

\* In the Zone, Apartment, Loft

## Notes

Film friendly

This 2,800 square foot 2nd floor walk up loft in Soho has lots of exposed brick and wood beams, light wood floors, modern decor

There is NO elevator in this location, it is a walk up.

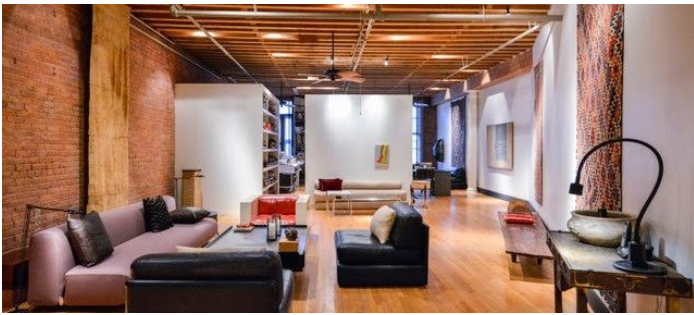
Open floor plan, clean, modern, ethnic, artist loft, industrial, bachelor pad, masculine.

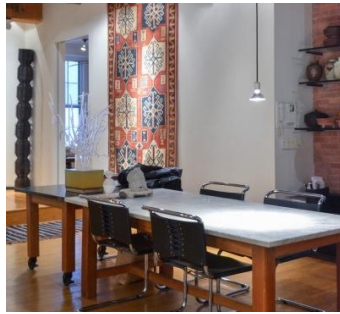
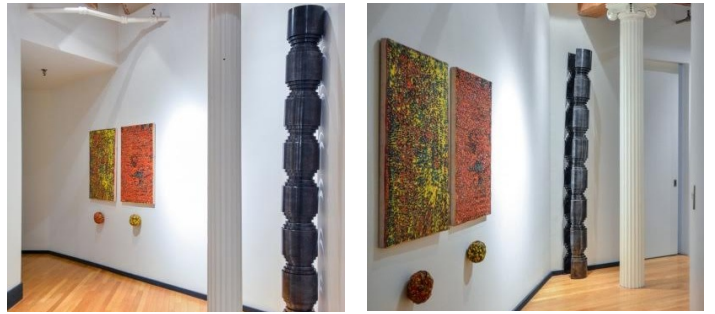
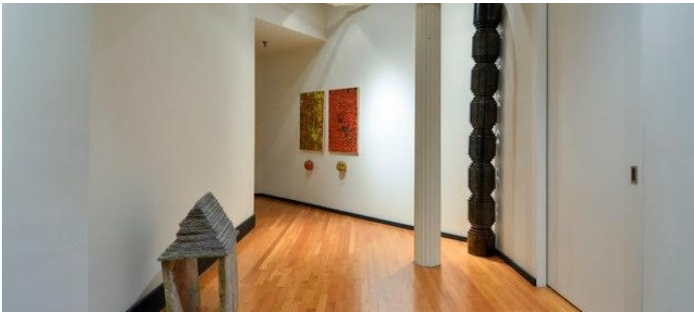
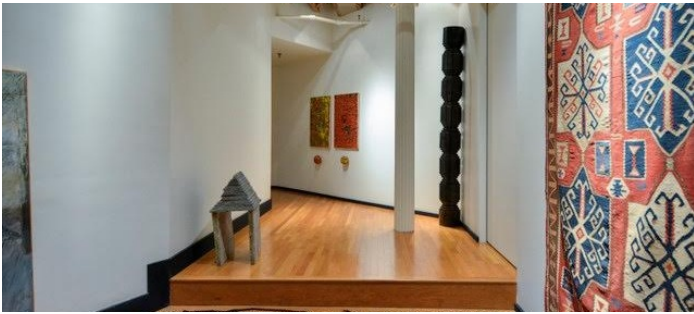
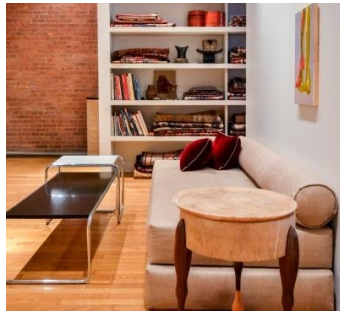
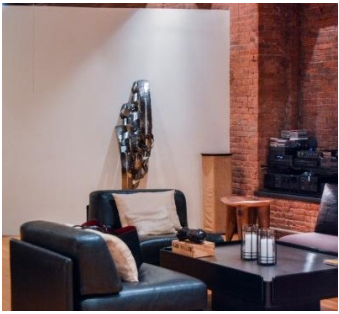
### **Restrictions:**

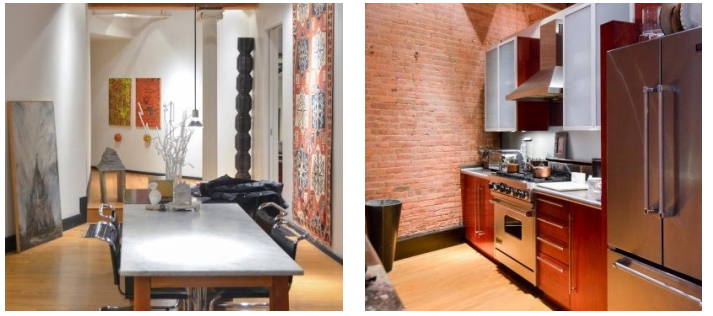
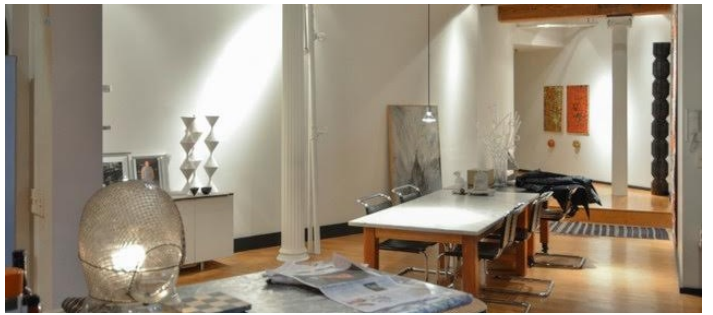
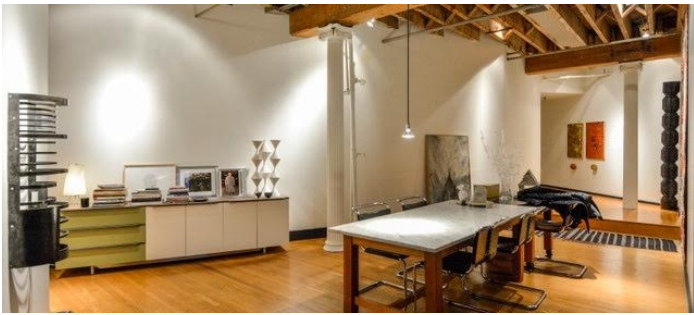
All floors must be protected, booties must be worn over shoes.

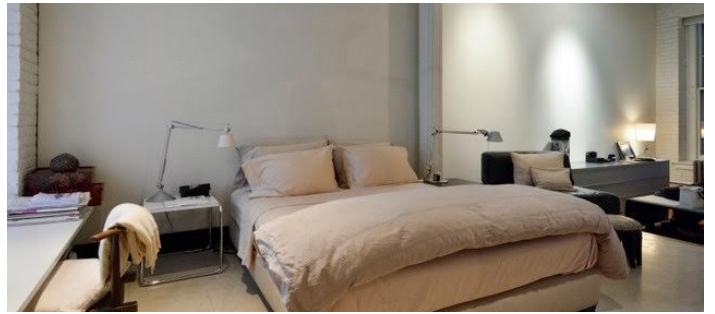
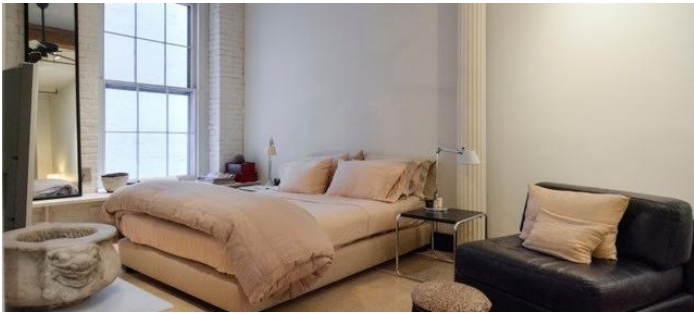
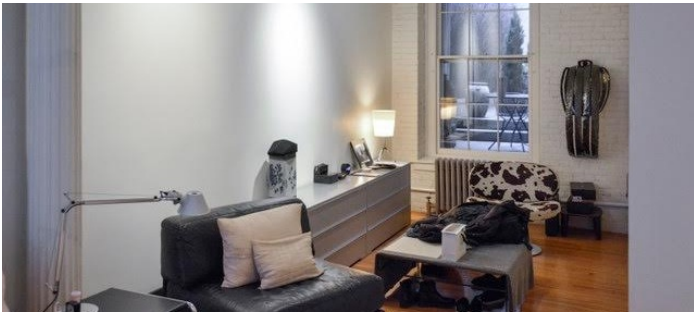
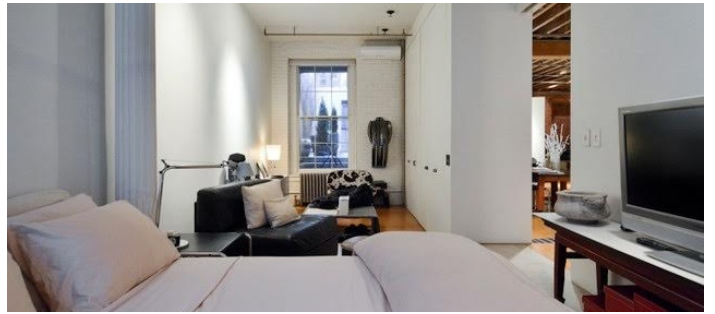
Areas of use determined in advance.

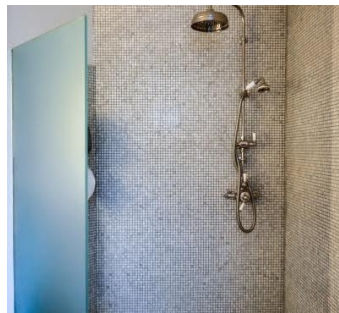
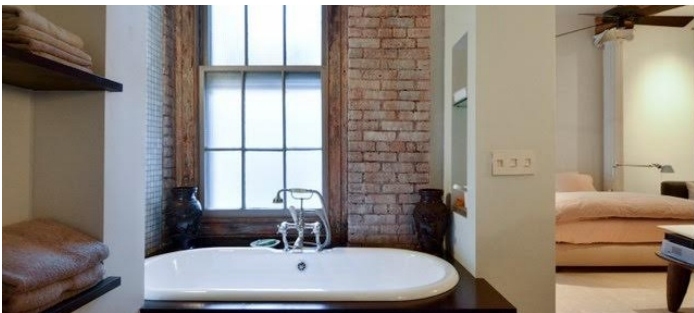
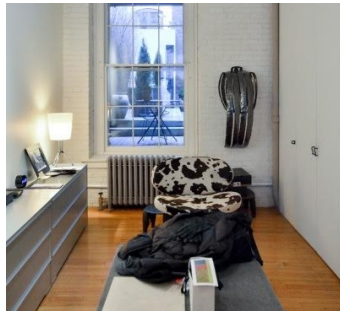
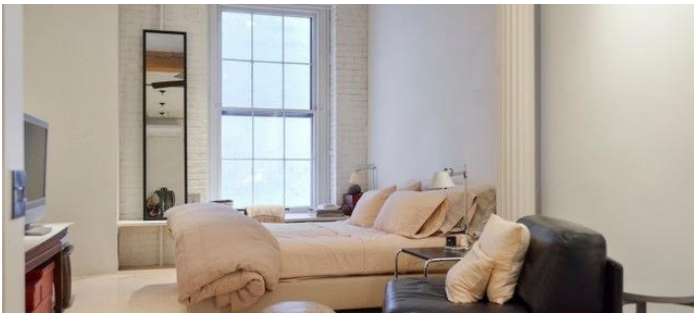
This is a co-op building.











TERRACE DECK

