

1ST FLOOR PARLOR LEVEL - VIEW FULL DETAILS BELOW

 LOCATION

Brooklyn, NY 11201

 SPECS

900 sq ft per floor

 GETTING THERE

2,3,4,5 to Borough Hall

 CATEGORIES

\* In the Zone, Apartment, Loft, Townhouse

 TAGS

Bathroom, Bedroom, City View, Fireplace, Floor to Ceiling Windows, Garden, Kitchen, Laundry Room, Library Room, Living Room, Modern Contemporary, Porch, Scandinavian, Skylight, Staircase, Staircase Ext, Stoop, Terrace Patio, White Spaces, Wood Floor

### Notes

This beautiful brick facade townhouse that has been modernized. 5 floors, some rooms get redecorated, scouting always recommended. Some of the rugs have changed and the garden now has gravel.

1st Floor/Parlor - a living room (approx. 520 sq.ft.), front entry (approx. 320 sq ft).

2nd Floor - office (approx 460 sq ft).

3rd Floor - master bedroom with the blue bed (approx 300 sq ft), the screened porch (approx 160 sq. ft), the closet/dressing area and the master bath (approx. 120 sq ft).

4th Floor - Bedroom one large room (approx. 850 sq ft).

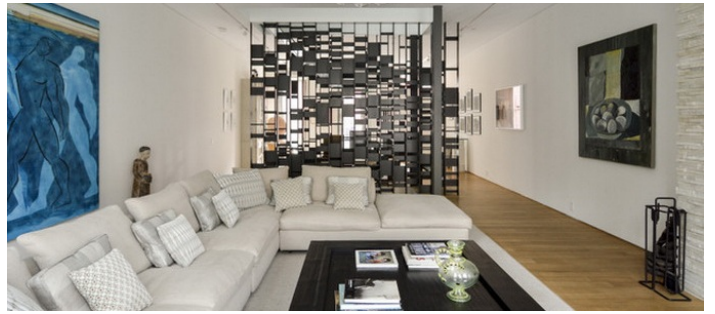
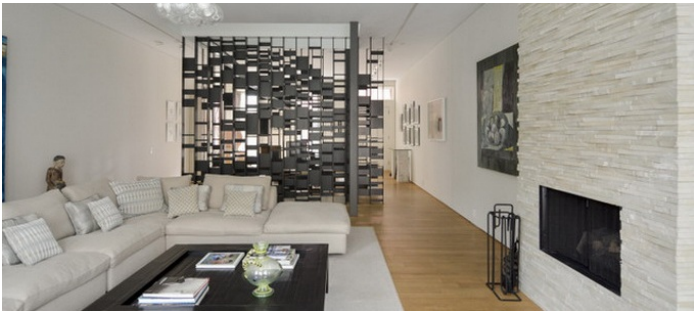
Garden Level - The TV room, with the blue and green furniture (approx. 320 sq. ft) and the kitchen/dining room (approx. 560 sq ft).

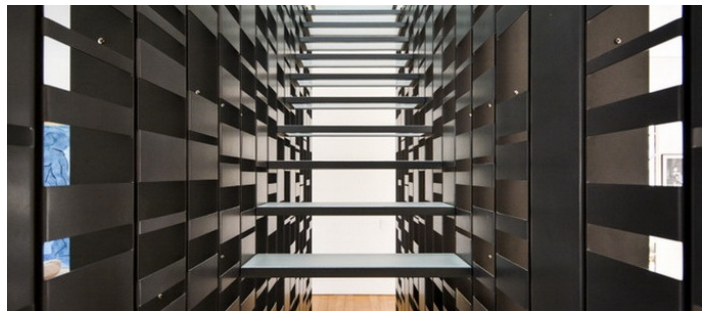
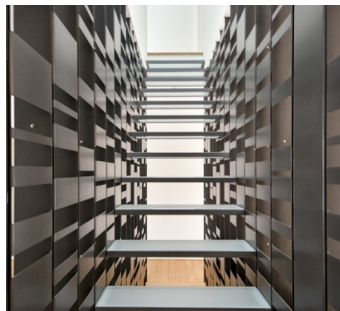
Stoop, brick exterior, built-in bookshelves, terrace, track lighting, kitchen island.

**Restrictions:**

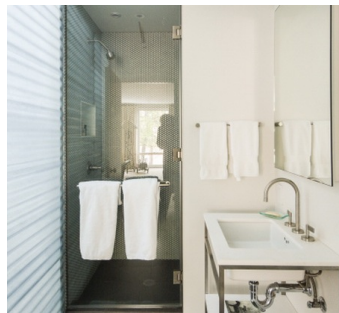
All floors must be protected, booties must be worn over shoes.

Areas of use determined in advance.

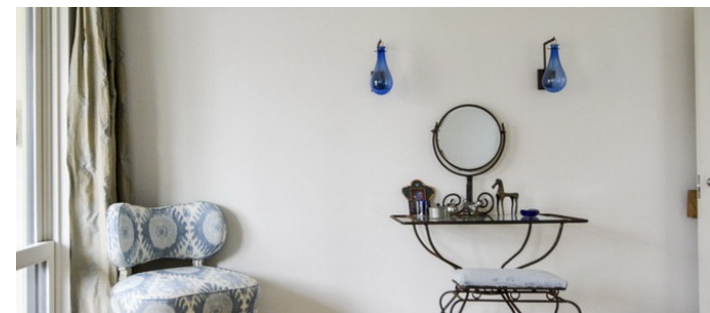
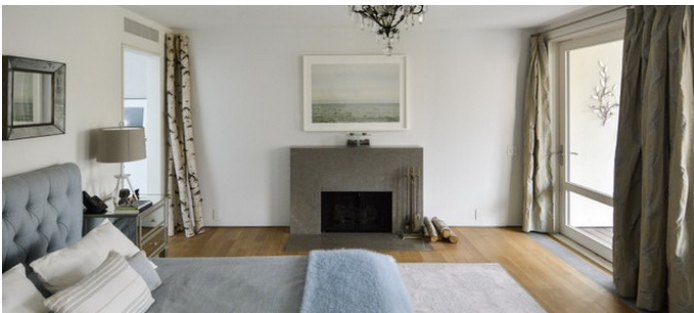


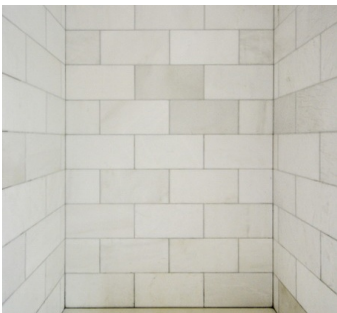
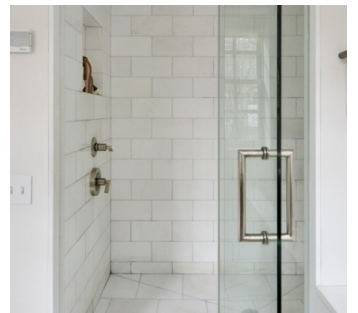
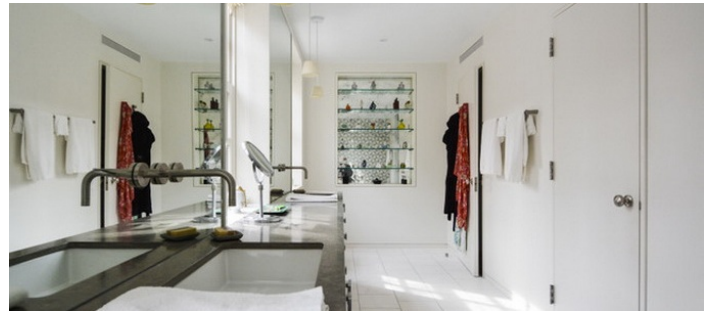
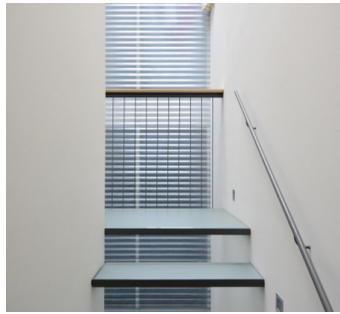
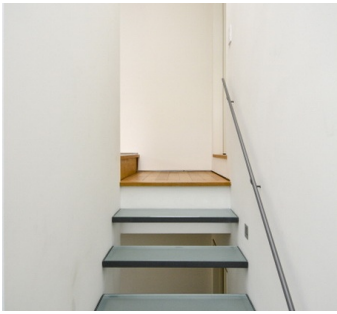
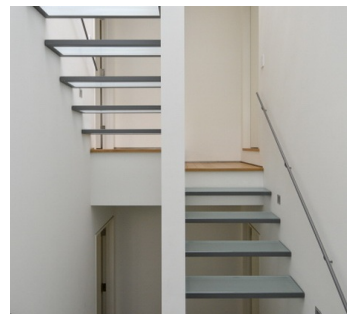
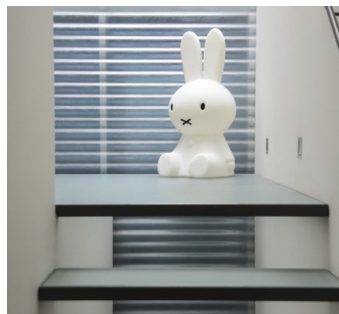
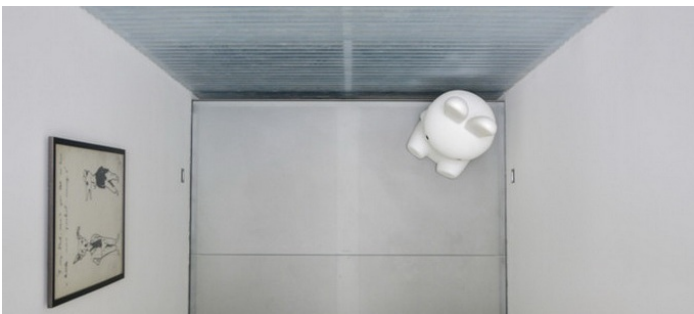








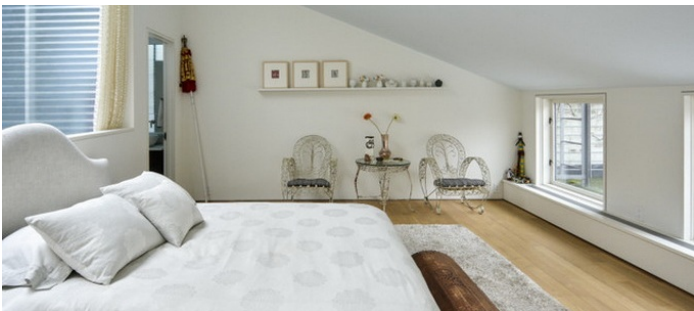


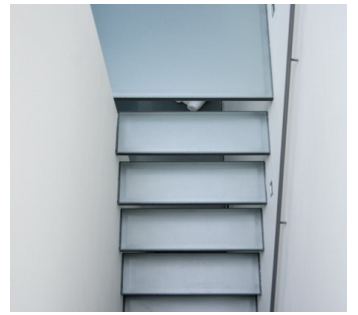
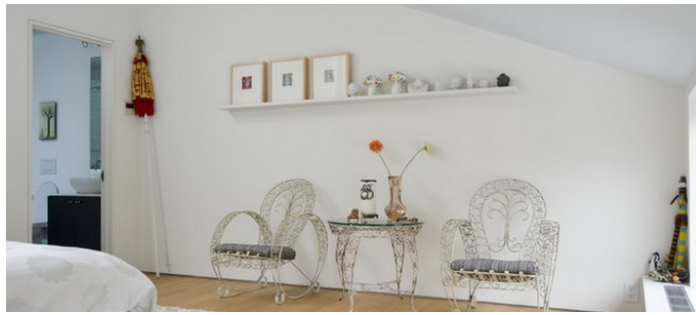




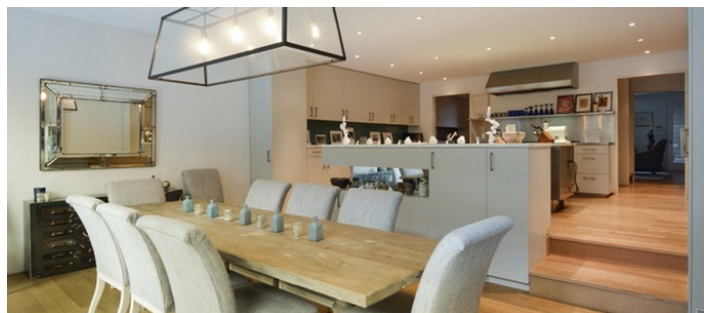








GARDEN LEVEL





GARDEN TERRACE

 SPECS



