

2329

Williamsburg, Brooklyn

 LOCATION

Brooklyn, NY 11211

 CATEGORIES

* In the Zone, Apartment, Loft, Townhouse

 TAGS

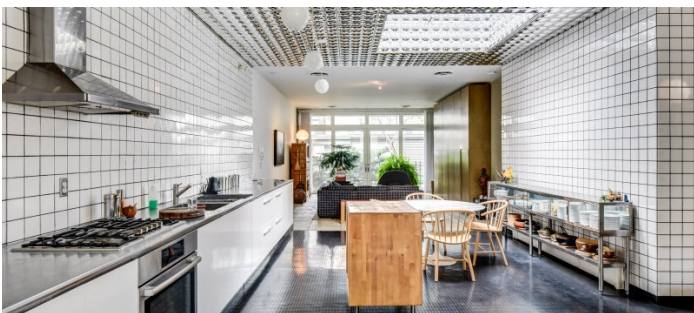
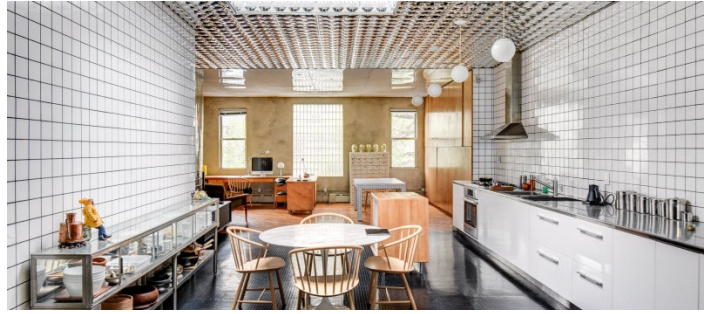
Bathroom, Bedroom, Bohemian, City View, Deck, Eclectic Quirky, Floor to Ceiling Windows, Garage, Kitchen, Living Room, Modern Contemporary, Rooftop, Staircase, Terrace Patio

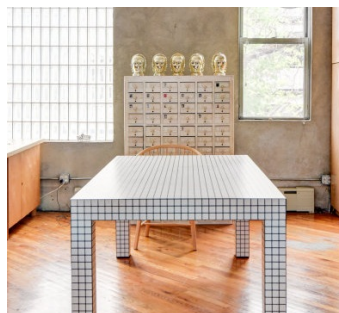
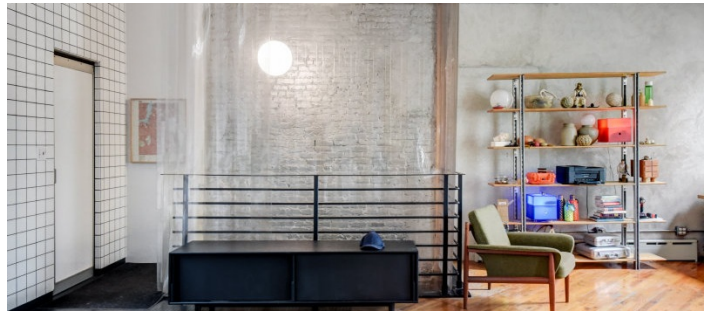
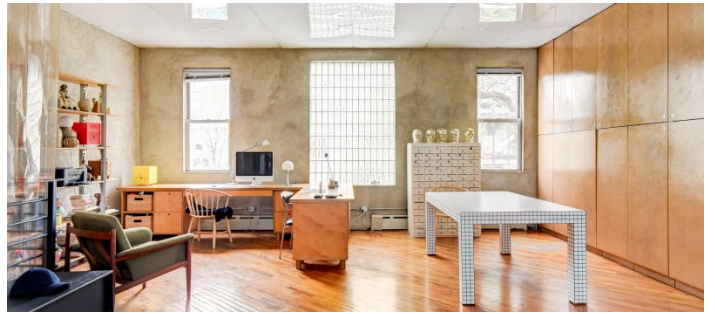
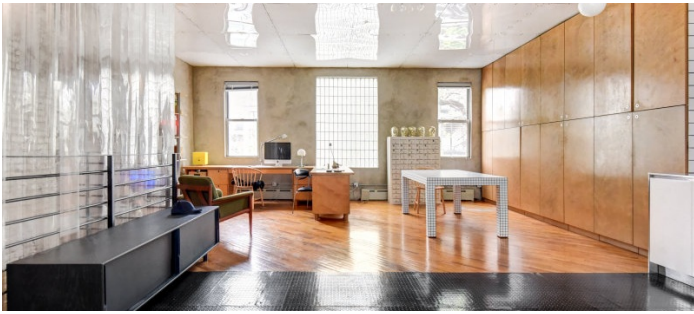
Notes

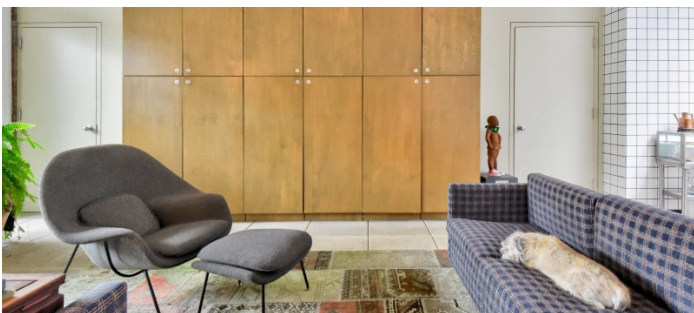
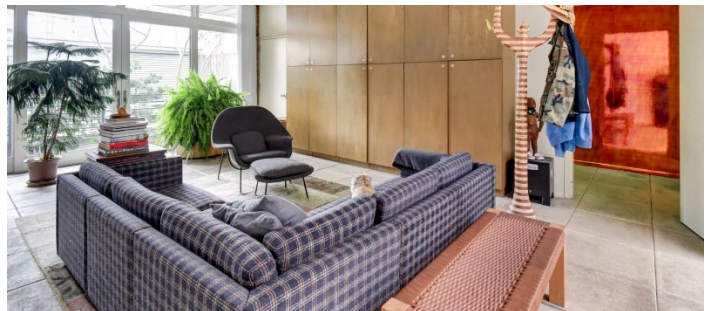
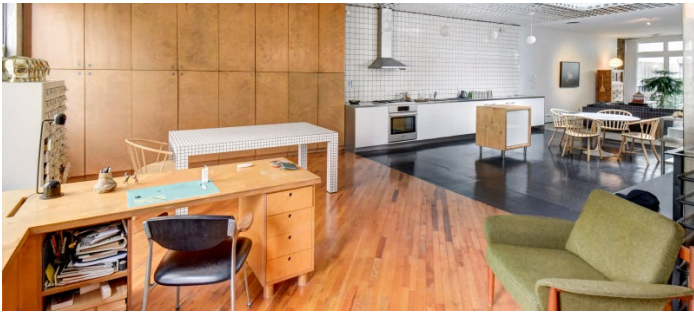
2-story apartment, kitchen spans the entire second floor and includes work space, living room, and access to the courtyard. The walls and counters are covered in four-by-four ceramic tiles; the floor is black radial rubber usually seen in airports; the chromed "lunar panels" on the ceiling are from E&T Plastics.

The pine-paneled guest quarters—built by carpenter John Rantanen—were imagined as the perfect artist's studio, the hide-a-bed folds into a closet, the kitchenette is in a nook hidden by folding doors, and the sink and shower are tucked behind sliding doors in the rear. Galvanized-metal grating in the stair hall is just like that found on city streets.

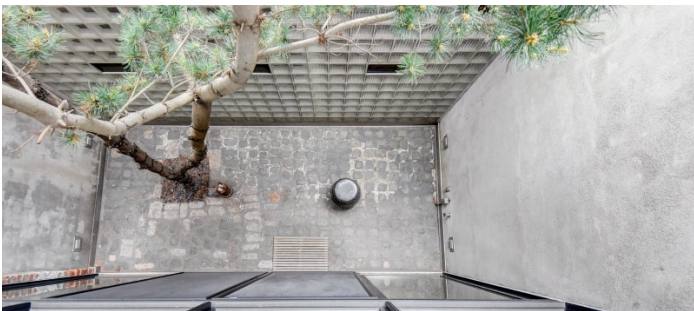
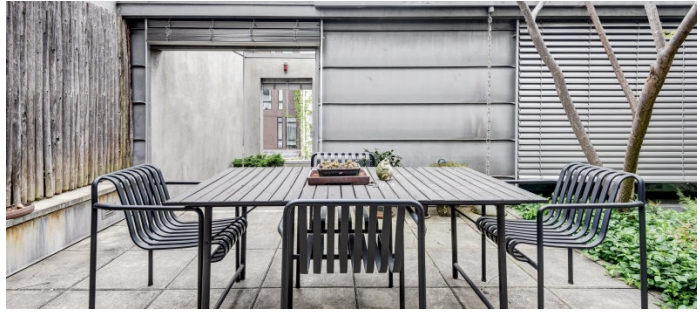
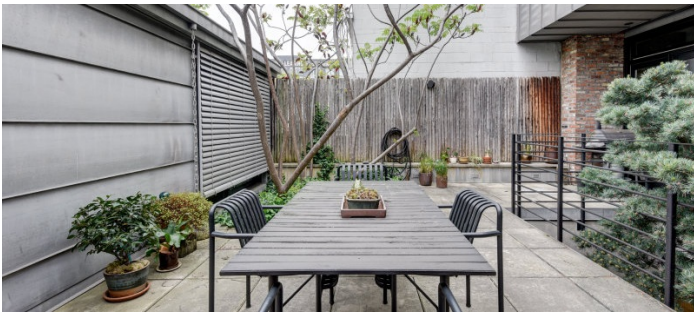
Restrictions do apply.



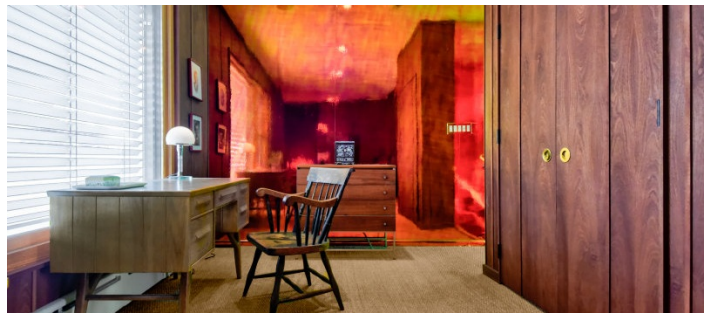
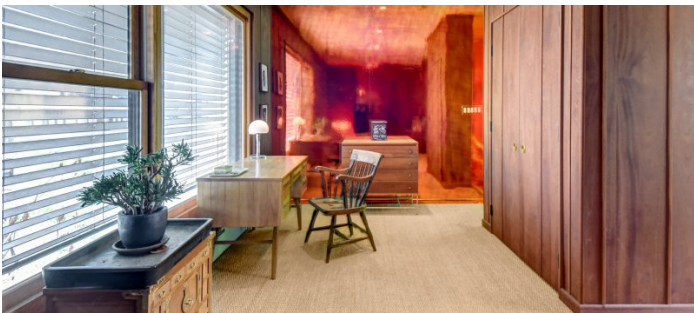
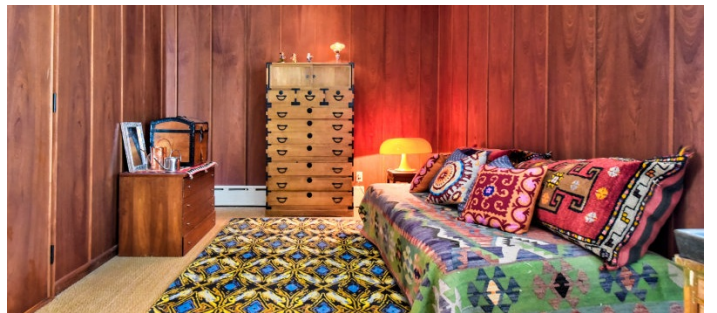
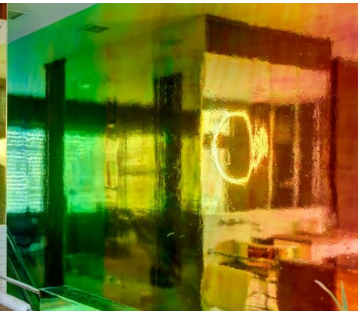






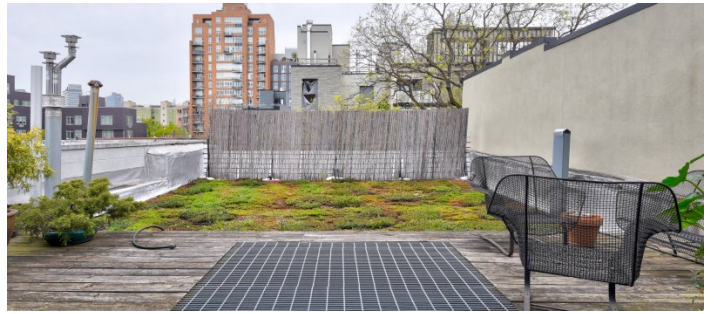




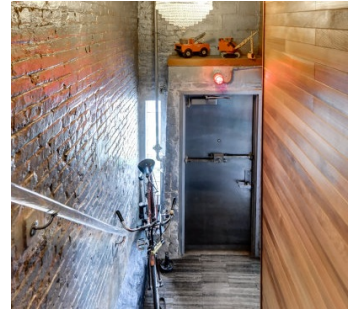
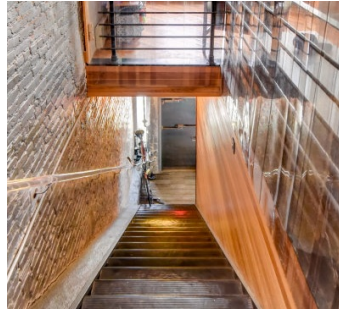
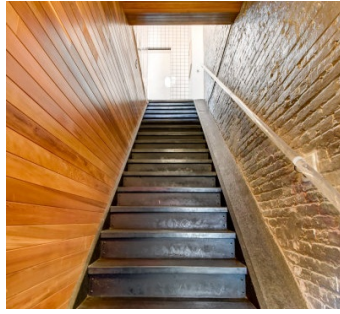
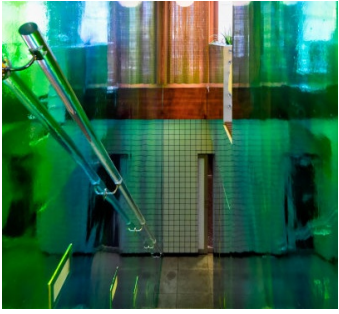
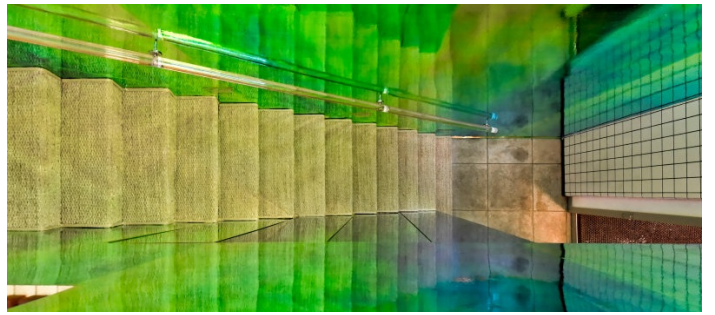
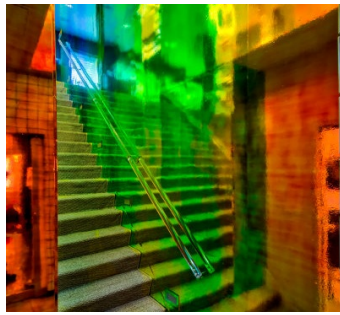
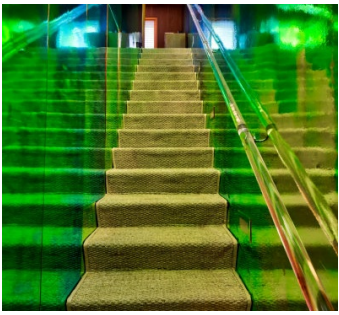




UPPER TERRACE/ROOF



STAIRCASE



EXTERIOR

