

12TH FLOOR - VIEW FULL DETAILS BELOW

 LOCATION

New York, NY 10012

 POWER

Electrical outlets are not reliable - bring own power

 TAGS

Bathroom, Bedroom, Elevator, Fire Escape, Kids Room, Kitchen, Living Room, Modern Contemporary, Skylight, Stained Glass, Staircase, Water Tower View, White Spaces, Wood Floor

 CATEGORIES

\* In the Zone, Apartment, Loft

## Notes

Print only

Incredible apartment on Broadway between Bleecker and Bond, top two floors, tons of light, all east facing. There is a restroom and kitchen on each floor. All white, staircase, view of city, eclectic, modern, open, fire escape, atelier vibe, sculptures

Fire escape maybe used according to floor rental.

Weekend shoots possible, but require freight elevator arrangements made in advance and fees apply. Electrical outlets are not reliable - bring own power, extension cords for all shoots

### Restrictions:

Fees are per floor, and all areas of use must be approved in advance

No shoes permitted in house at all, floors are painted white and are delicate and must be protected, nothing may touch raw floors and be rolled on floors. All furniture must be covered in sheets, everything is white and can dirty easily.

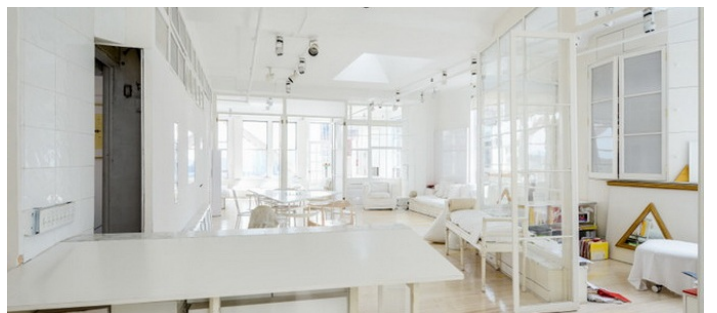
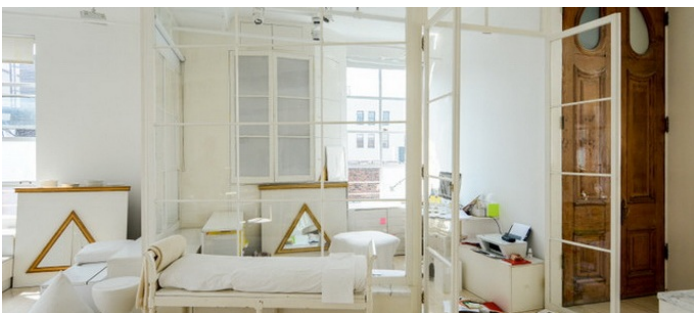
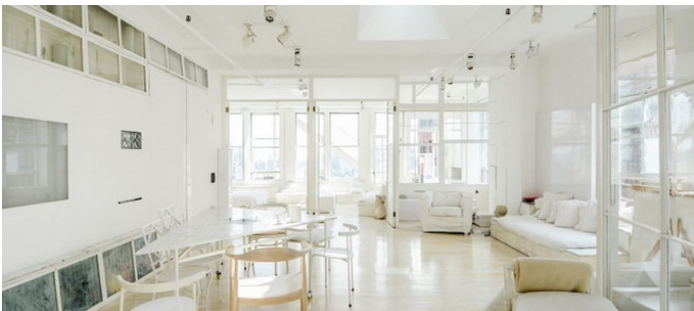
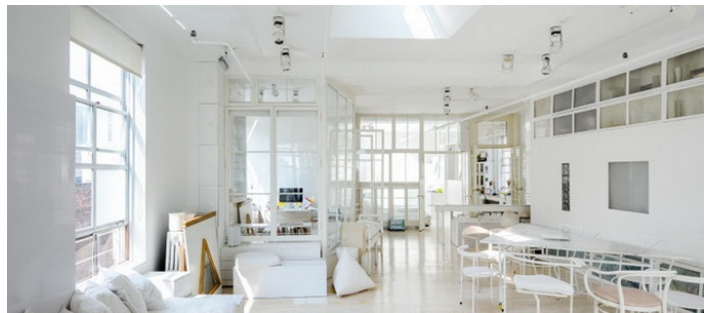
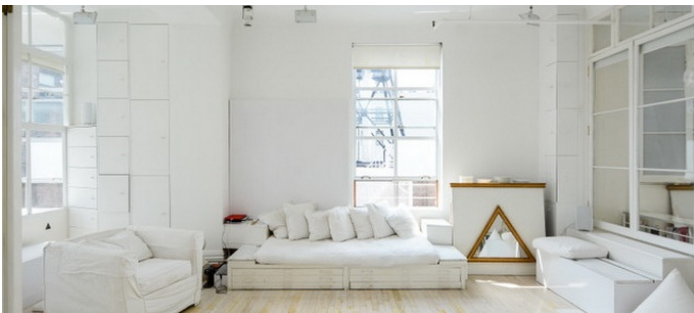
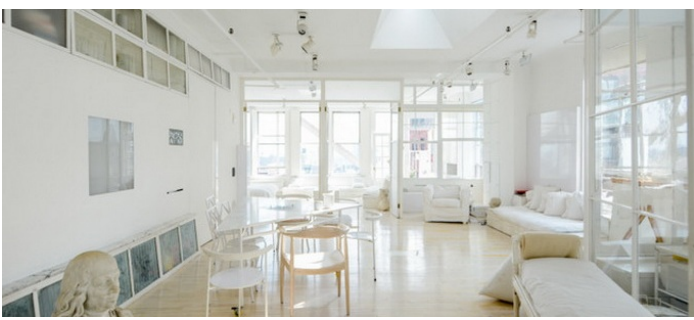
Some walls in the apartment are very delicate and made of glass, please be sure to protect all walls. The halls and stairs are very narrow and extra care must be taken when carrying things through halls and stairs

Must keep all doors shut if heat and AC is on

Building clearance required

There is a freight elevator that is available for use, fees apply. Key is required so times of use need advanced approval. No parking in alley, you can only load in/out briefly.

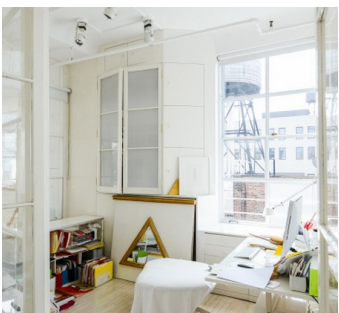
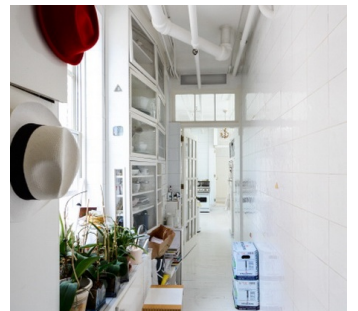
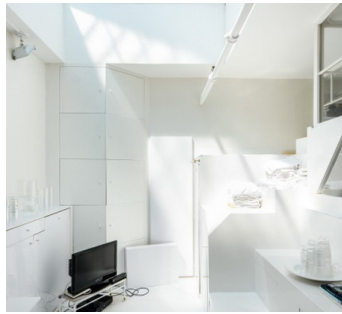
The freight elevator opens onto both floors of the loft, and there are 2 passenger elevators in the building as well.











11TH FLOOR - SEPARATE FEES



