

 LOCATION

Brooklyn, NY 11238

 TAGS

Architectural, Bathroom, Bedroom, Distressed Patina, Exposed Beam, Exposed Brick, Garage, Kids Room, Kitchen, Living Room, Modern Contemporary, Raw Industrial, Rooftop, Skylight, Staircase, White Brick Wall, White Spaces, Wood Floor

 SPECS

1,900 sq ft total  
450 sq ft living room  
220 sq ft kitchen  
190 sq ft bedroom  
190 sq ft garage

 CATEGORIES

\* In the Zone, Apartment, Duplex, Loft, Roof Top, Townhouse

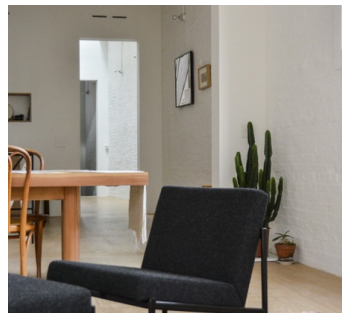
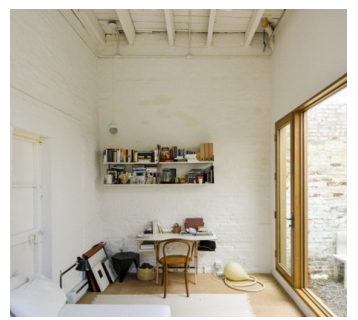
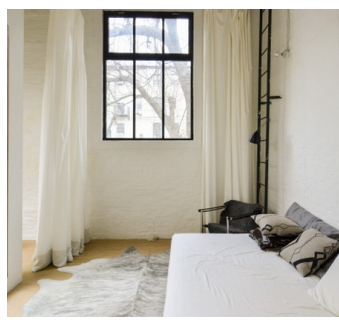
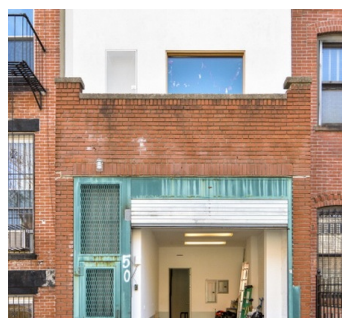
## Notes

Beautiful transformation of industrial space garage into a light filled 2 story house with 9 rooms, stairs in oak plywood with metal railings, 2nd floor houses master bath and 2 bedrooms, beamed ceiling painted white, white brick walls, great large windows with light, skylight, high ceilings, garden is an extension of the living room, guest room easily closed off by a curtain.

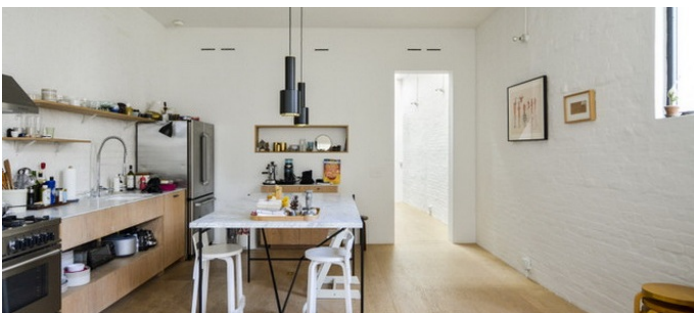
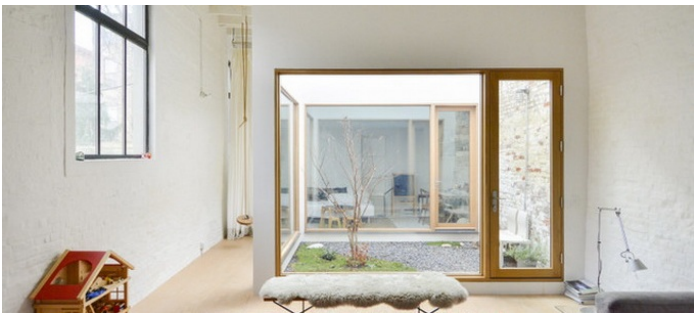
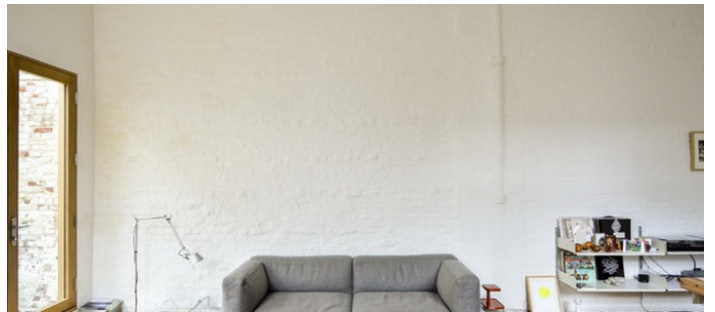
**Restrictions:**

All floors must be protected, booties must be worn over shoes.

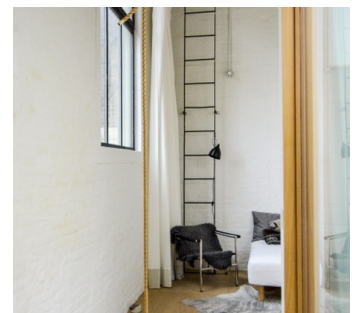
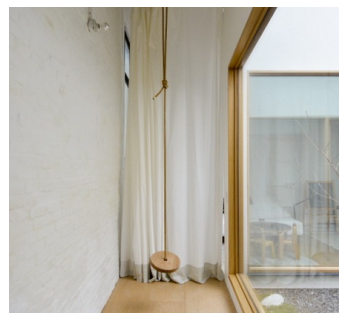
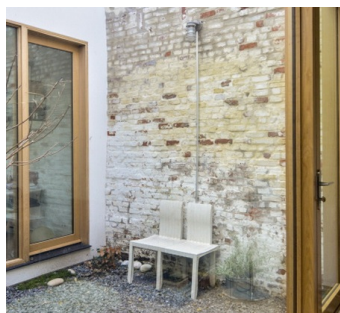
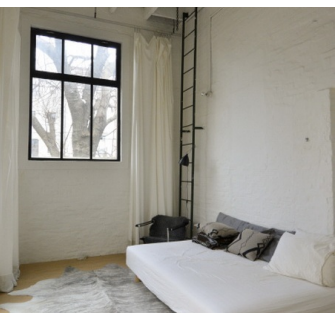
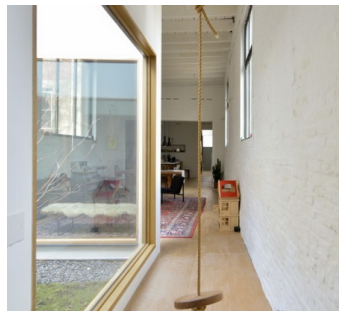
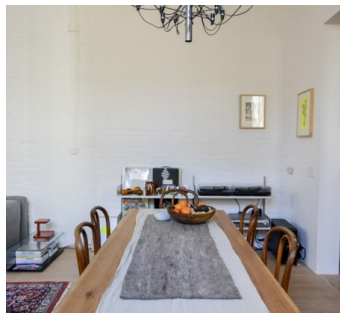
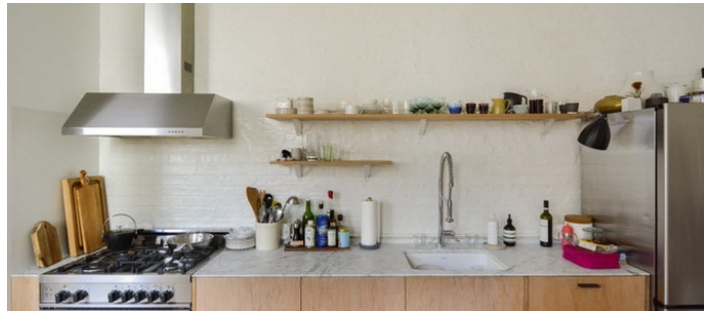
Areas of use determined in advance.



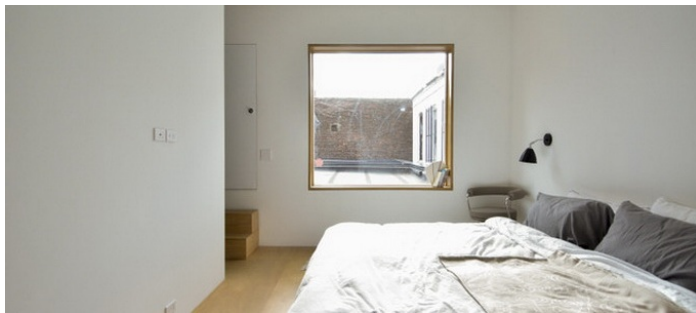
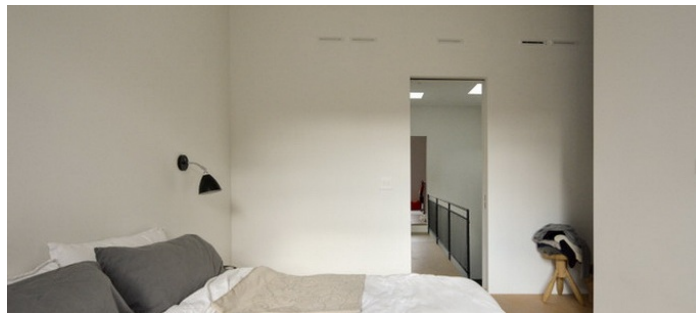
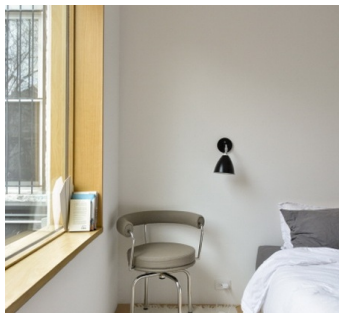
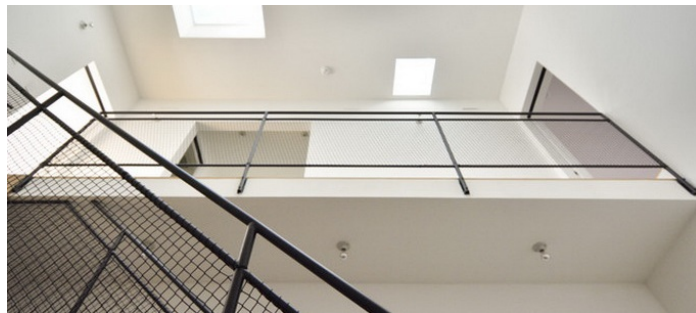
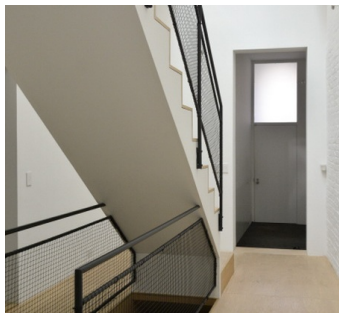
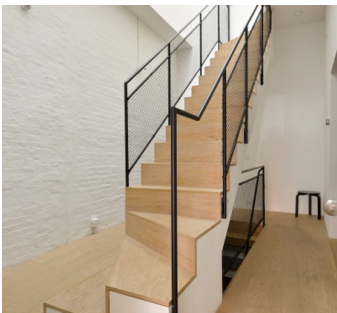
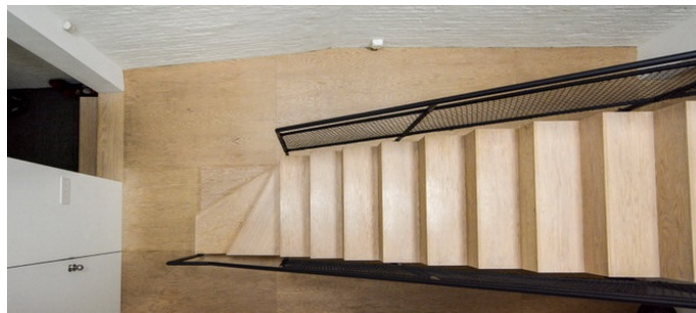
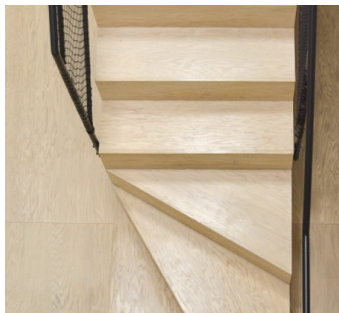
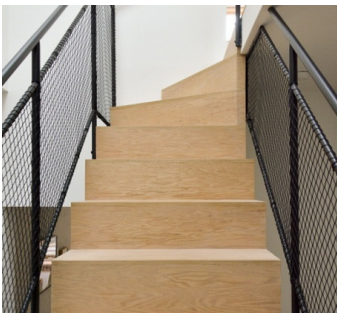
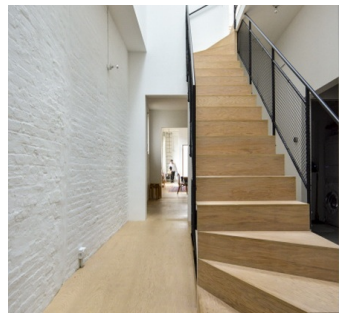
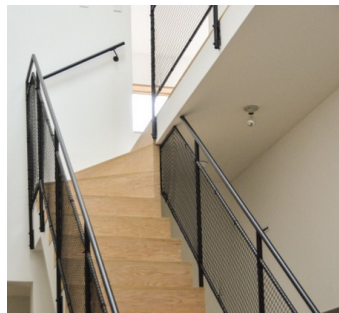
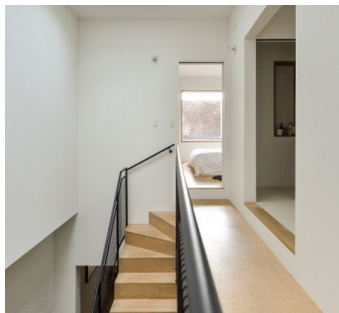
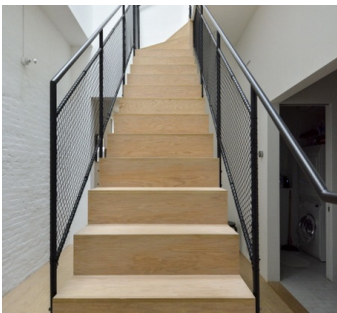
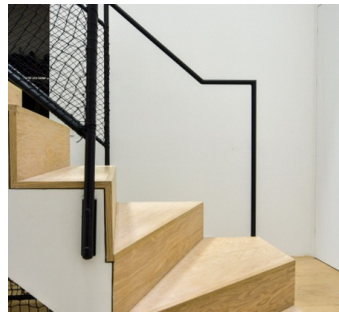
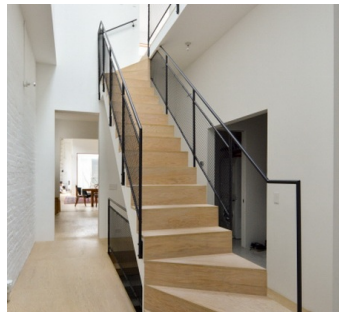
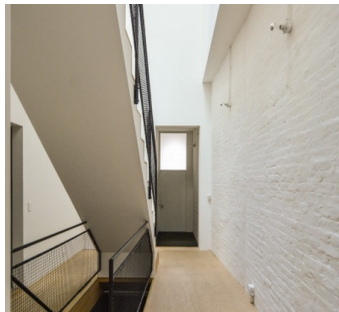
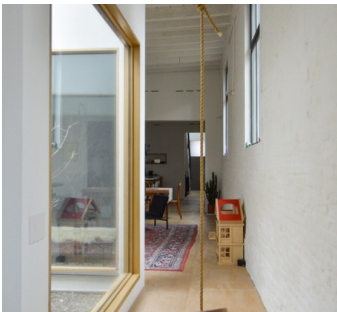




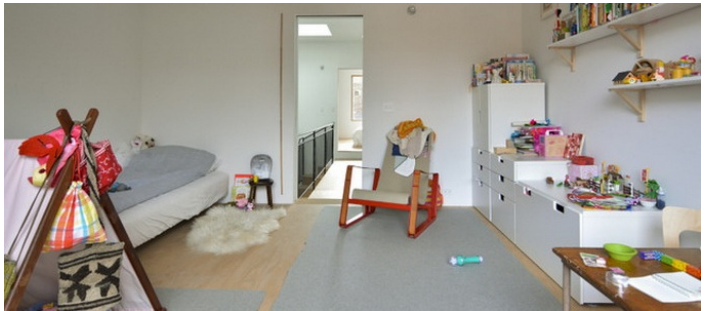
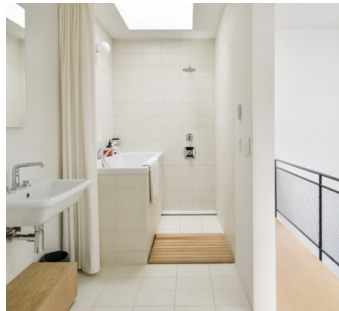
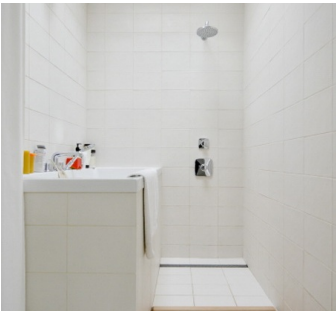
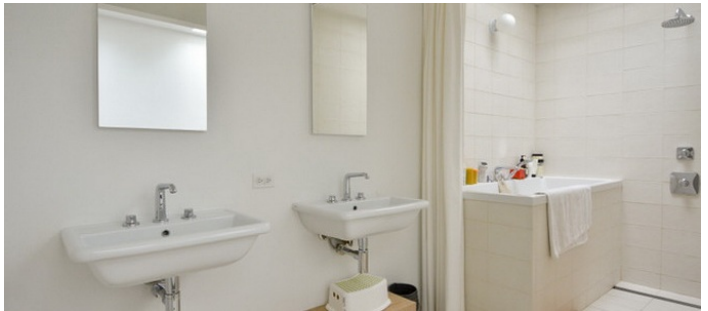
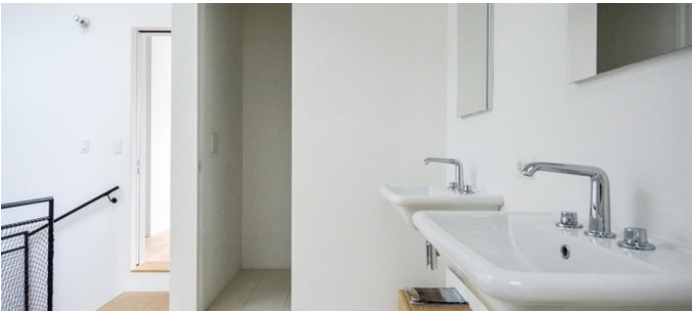
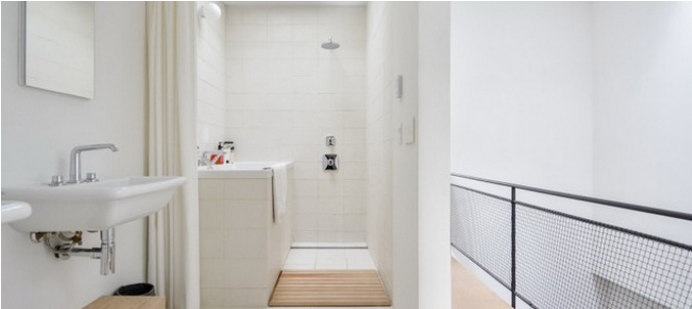
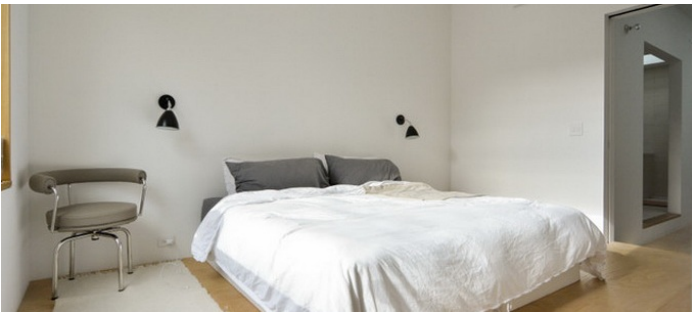


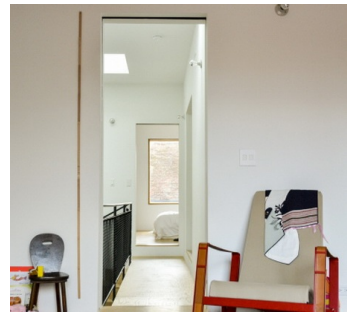












GARAGE



