

 LOCATION

Brooklyn, NY 11207

 SPECS

3,200 sq ft

9'-11' ceiling height

 TAGS

Balcony, Bedroom, Colorful, Deck, Eclectic Quirky, Exposed Beam, Exposed Brick, Fence, Fireplace, Kids Room, Kitchen, Living Room, Modern Contemporary, Staircase Ext, Stoop, Wood Floor

 CATEGORIES

\* In the Zone, Apartment, Loft, Townhouse

## Notes

Modern open and airy light-filled townhouse with open floor plan and many turn of the century details. Clean dark wood finishes, scandi-chic zen feel, and original arched entrance door. Large front windows for easy lighting. Four antique fireplaces, one is wood burning.

This property has 2 separate owner occupied duplex apartments, the downstairs apartment has a classic "gentlemen's apartment" feel and can be used for filming or holding.

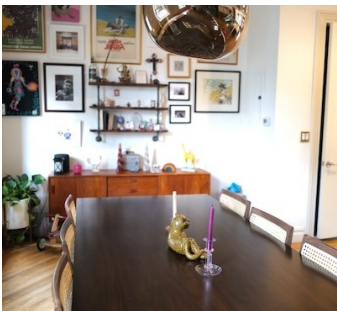
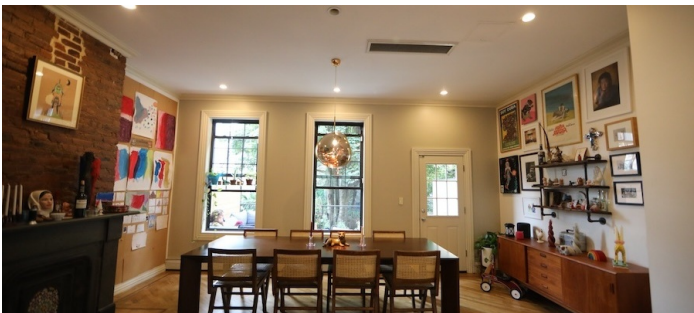
Classic Brooklyn arched front door with deep blue modern new hardy board siding. Backyard with large tree, cedar wood deck balcony on parlor floor. Front yard and backyard are available for staging and catering with garden, slate patio.

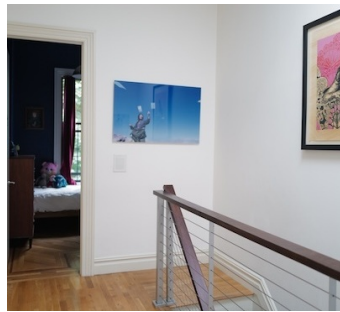
Ample street parking and film friendly neighbors.

**Restrictions:**

All floors must be protected, booties must be worn over shoes.

Areas of use determined in advance.













EXTERIOR



