

 LOCATION

Lebanon, NJ

 SPECS

12 acres

 DISTANCE FROM NYC

50 miles

 CATEGORIES

Barns, Cabin, House

 TAGS

Barn, Bedroom, Exposed Beam, Fence, Fields, Fireplace, Garage, Garden, Hammock, Kitchen, Living Room, Porch, River Stream, Rustic, Staircase, Stone Wall, Wood Floor, Woods

Notes

Film friendly

This beautiful Lebanon, NJ rustic country cottage was built in the 1940's and is situated on 12 acres of mostly wooded land that includes an organic fruit and vegetable farm, 600 feet from the Musconetcong River.

On the ground floor, this home has a dining room, kitchen, and living room all connected with an open feel, as well as a small bathroom. The upstairs has 2 bedrooms, one with peaked ceilings and skylights, and a full bathroom. This charming location includes exposed wood beams on ceiling, wood floors, a fireplace, and stone walls.

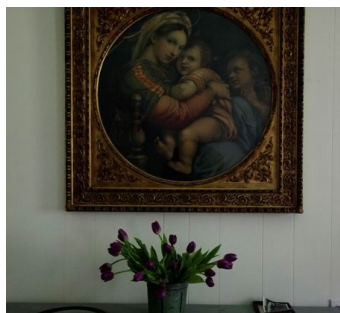
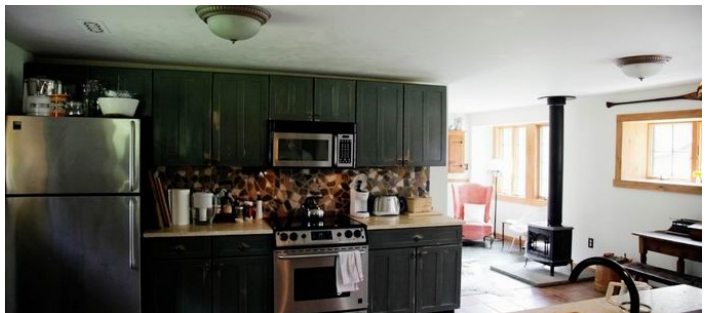
There are also 2 out buildings on the property, as well as a hammock and a jacuzzi in the forest, and fire pits.

Restrictions:

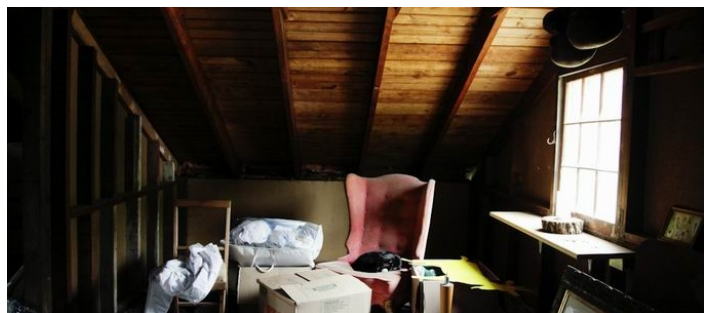
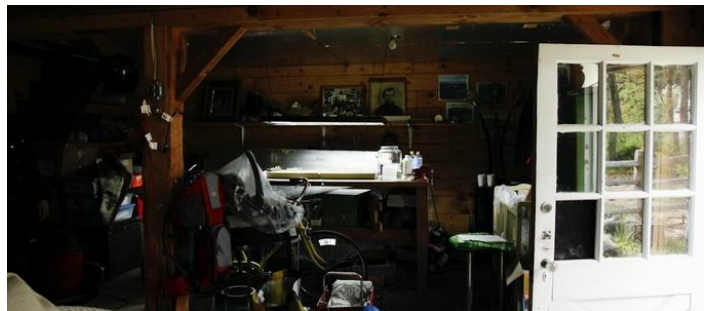
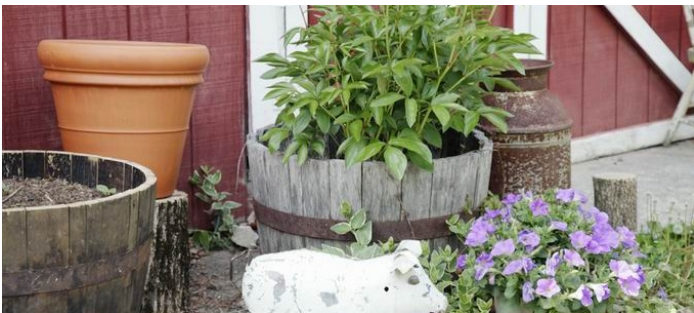
All floors must be protected, booties must be worn over shoes

Areas of use determined in advance









WOODS, RIVER, FIELD

