



LOCATION

Tewksbury, NJ 07830



SPECS

10 acres



DISTANCE FROM NYC

53 miles



CATEGORIES

House, Recording Studio



TAGS

Backyard Lawn, Bathroom, Bedroom, Colorful, Distressed Patina, Exposed Brick, Fence, Fireplace, Garden, Kitchen, Lake or Pond, Library Room, Living Room, Modern Contemporary, Ornate, Piano, Pool Outdoor, Rustic, Stone Wall, Terrace Patio, Traditional, Water View, Wood Floor, Woods

Notes

Film friendly

Beautiful 10-acre Tewksbury, NJ property which combines the wild beauty of nature with the refinement of a French country estate. Natural spring fed ponds with pine needle padded pathways, a sloping meadow nestled against a serene oak forest, natural gardens and grounds, fields and forests, and a provenance that is traced back to 1742 provide a wide array of textures and a dramatic backdrop.

Outbuildings include stone Springhouse built in 1742, Schoolhouse built in 1850, now a state of the art recording studio, open Carriage house ideal for staging outdoor catering, and a Coal House. Springhouse is adjacent to the 1742 section of the house and next to the upper pond (the smaller of the two bodies of water).

An original brick terrace which was the kitchen floor back in the days when the kitchen was a separate building from the house. Schoolhouse is adjacent to the main house in the other direction. The two buildings are connected by a Kearney Stone walkway (approx distance 100').

Restrictions:

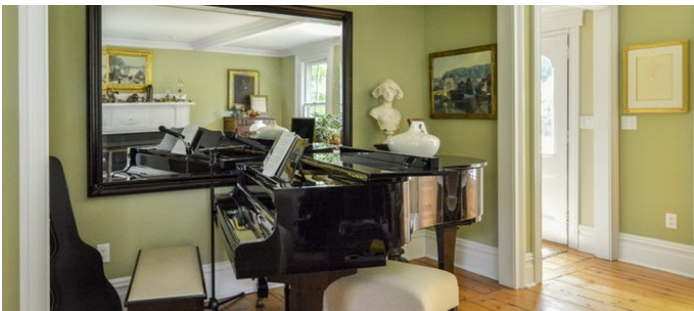
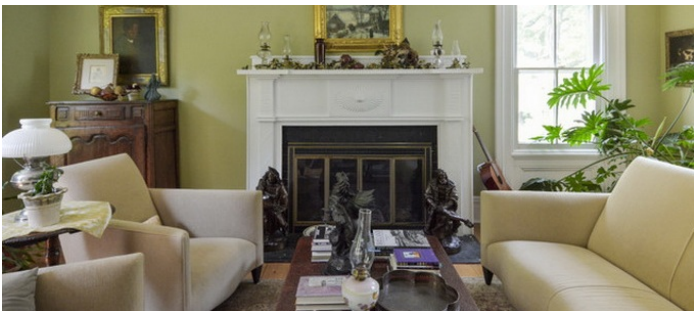
All floors must be protected, booties must be worn over shoes

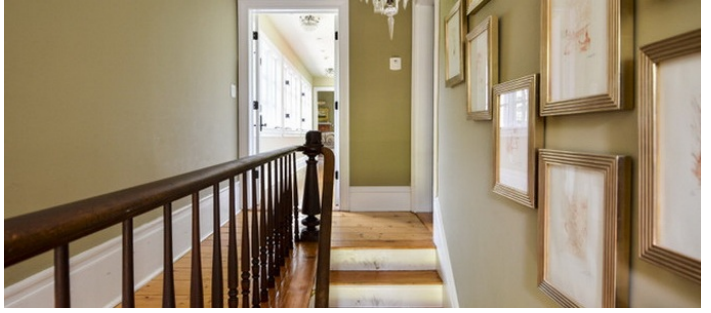
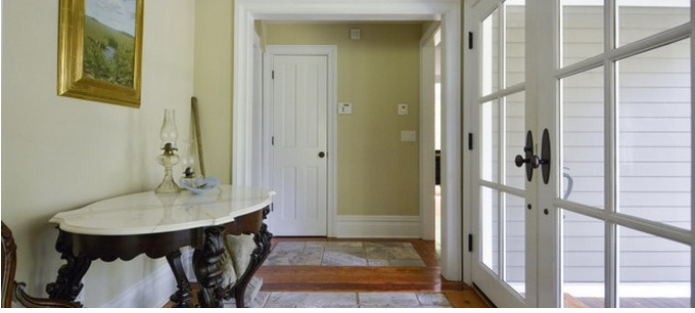
Areas of use determined in advance



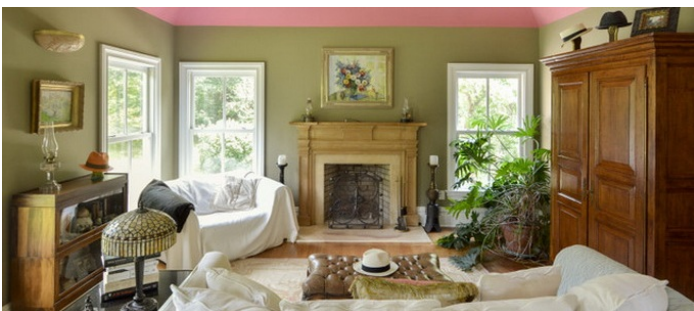
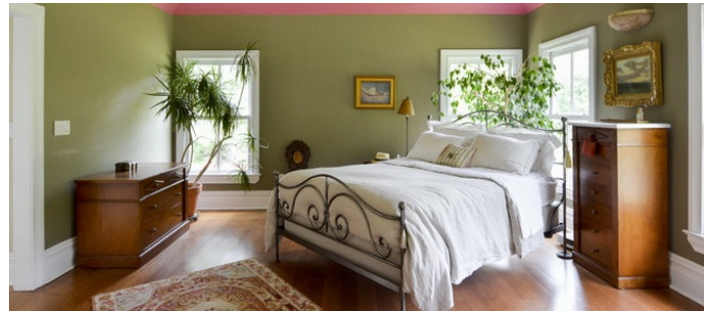
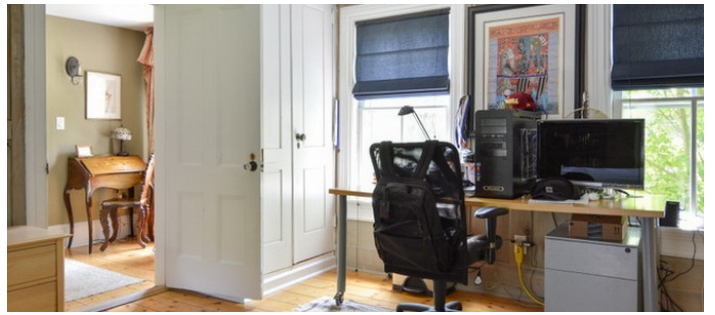


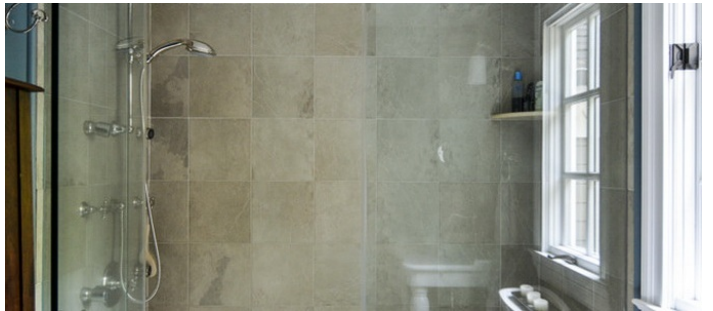
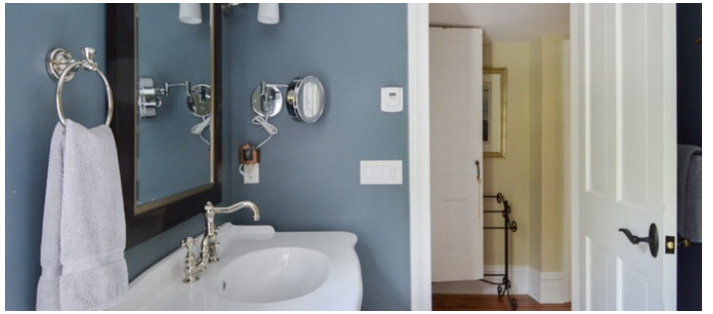
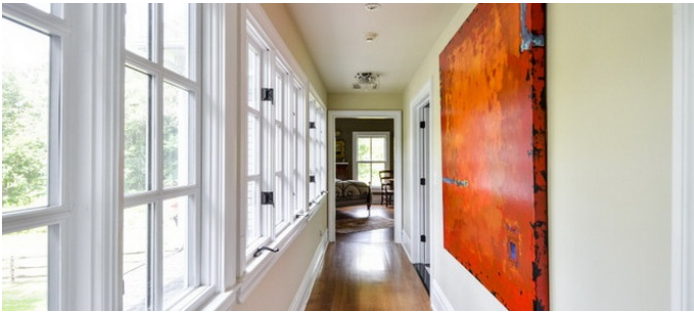


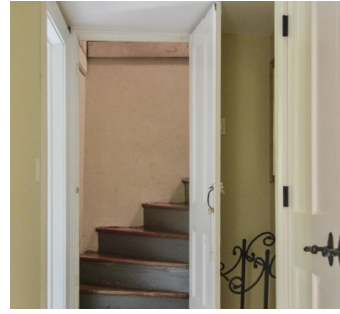
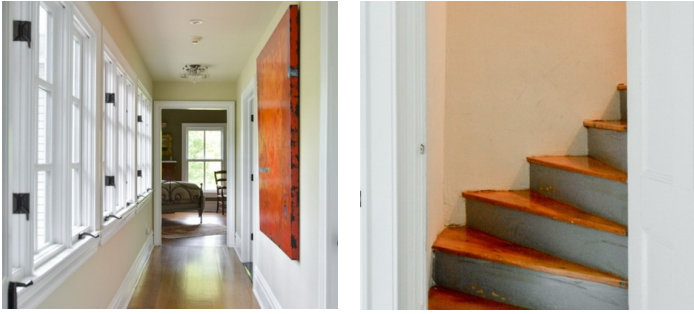








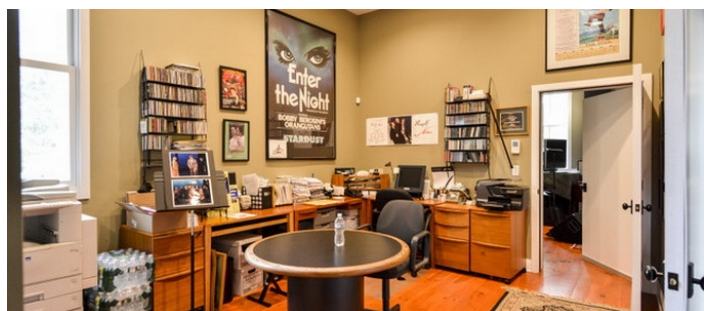
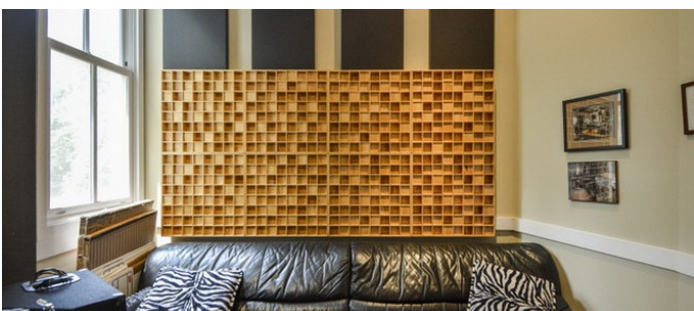
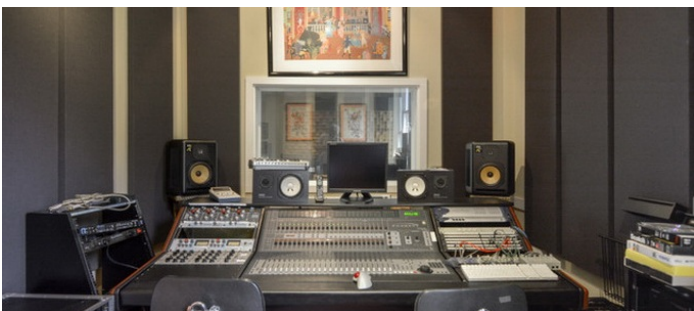
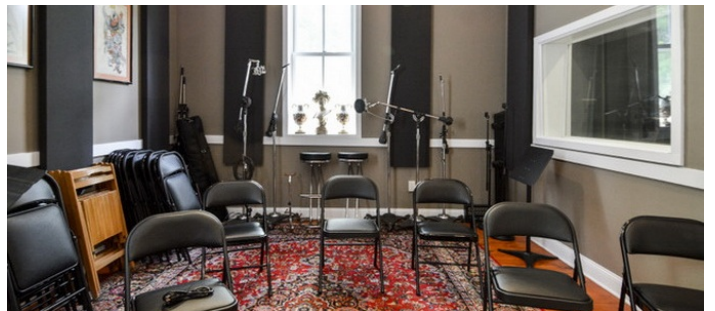
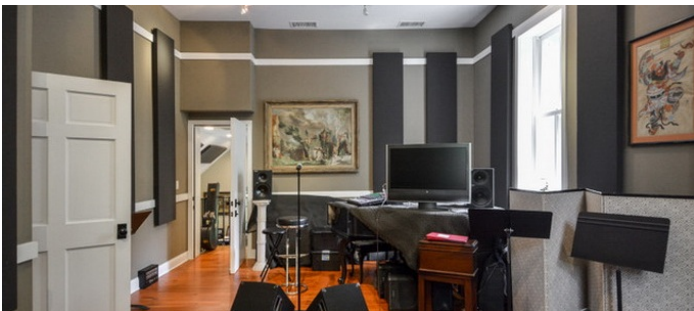
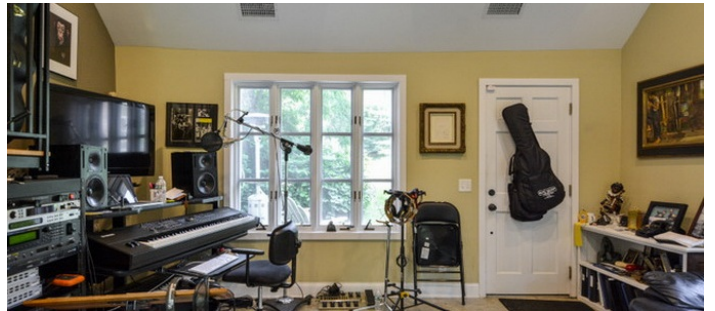
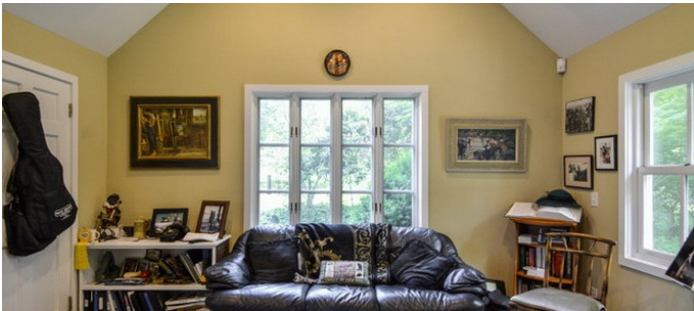
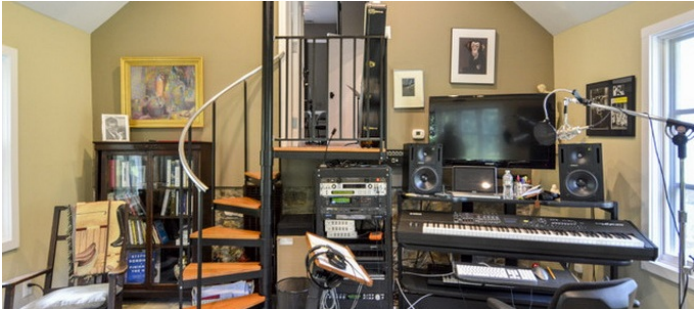




MUSIC STUDIO - SPECIAL CLEARANCE REQUIRED

Notes

Music Studio Interiors: off limits unless cleared in advance and limited use





PONDS, OUTBUILDINGS, WOODS



