

 LOCATION

Darien, CT 06820

 DISTANCE FROM NYC

52 miles

 TAGS

Architectural, Backyard Lawn, Balcony, Bathroom, Bedroom, Billiard Table, Deck, Fireplace, Floor to Ceiling Windows, Garage, Kids Room, Kitchen, Lake or Pond, Laundry Room, Living Room, Modern Contemporary, Piano, Porch, Staircase, Staircase Ext, Terrace Patio, Water View, White Spaces, Wood Floor

 SPECS

9,111 sq ft

1.5 acres

 CATEGORIES

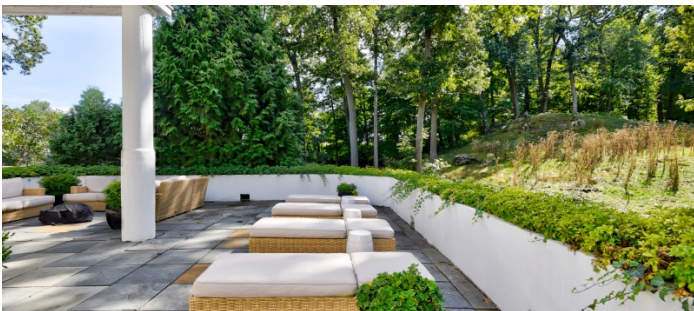
House

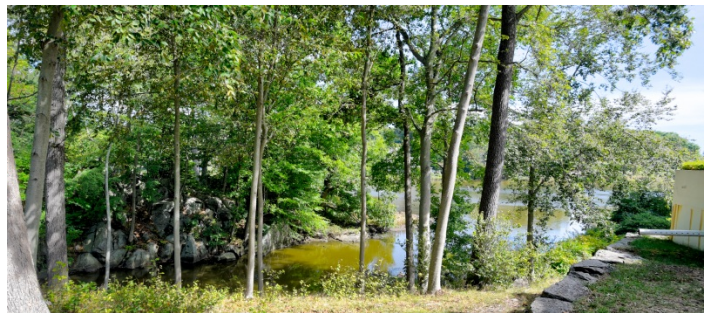
Notes

Beautifully sited waterfront property on a knoll providing extraordinary views across Gorhams Pond with an abundance of indigenous wildlife. This commanding contemporary is a one-of-a-kind residence at the end of a cul-de-sac within a private association.

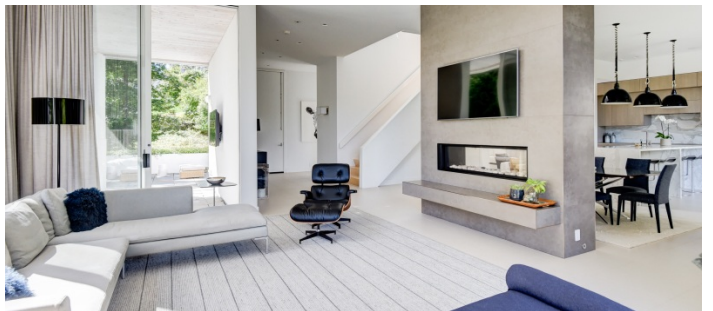
Built as a home and studio by internationally acclaimed Dutch artist, Karel Appel, the house boasts an open floor plan and 12' ceilings with soaring walls of glass sliding doors leading to private decks and terraces.

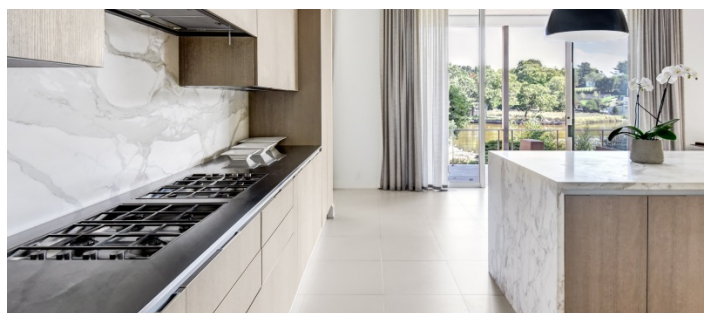
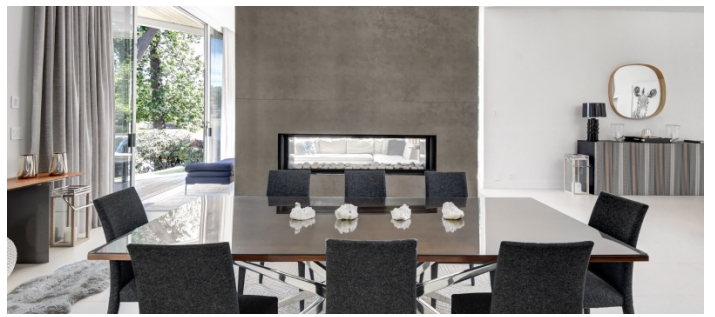
The former artist's studio itself offers open space and has been renovated into a squash court with a 21' ceilings, a 2-story gym with a glass balcony for viewing and glass stairs overlooking the squash court, completed with a steam room with horizontal showers off of the court.



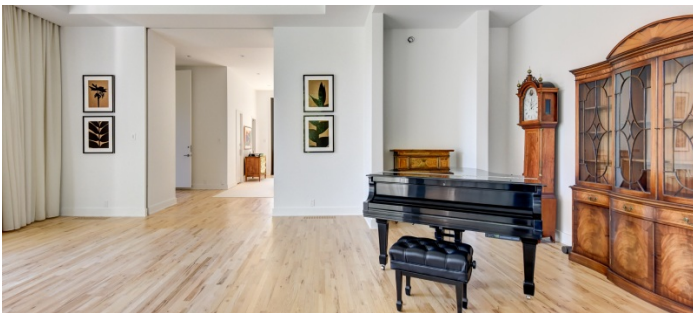
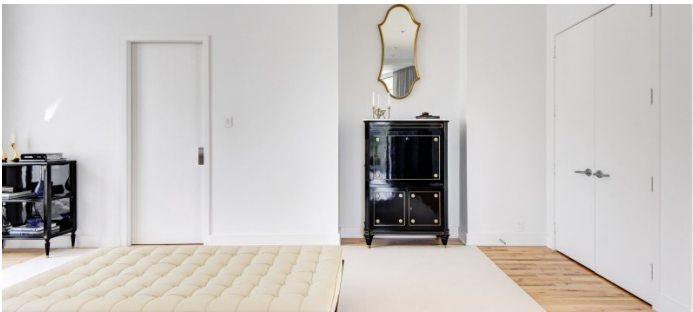


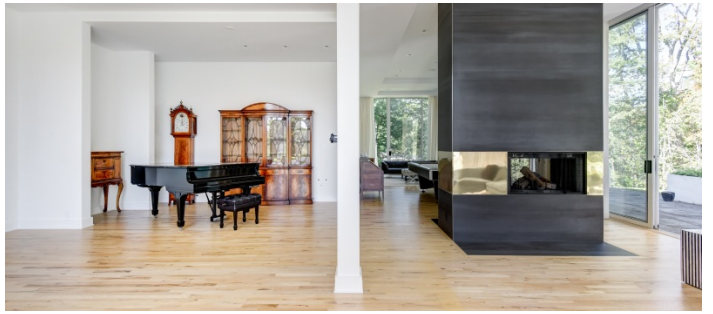
MAIN LEVEL

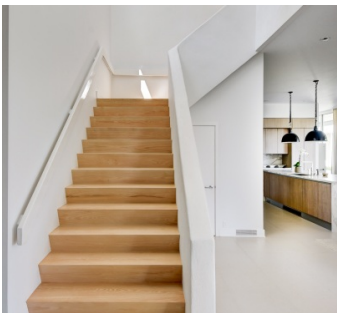


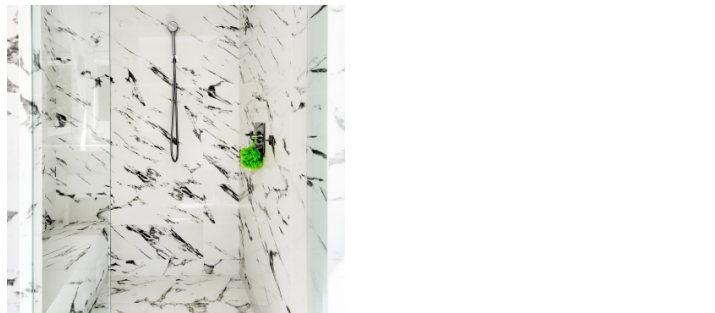


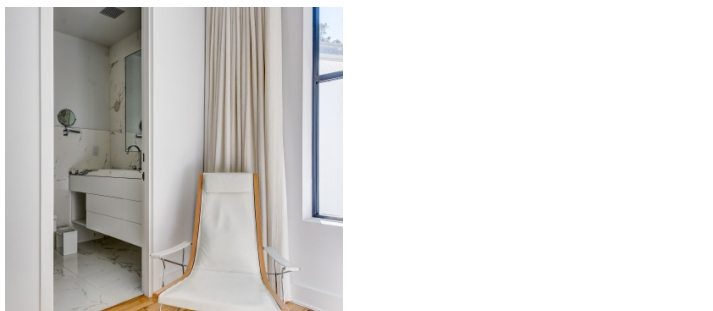
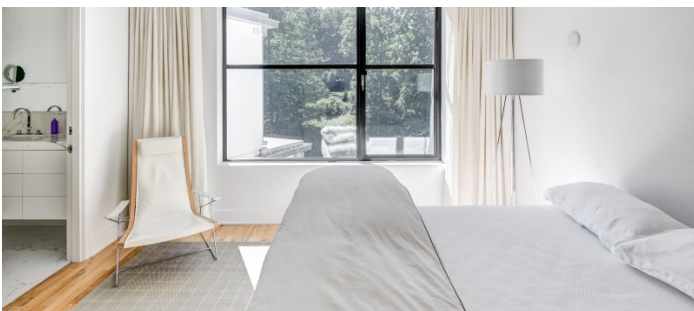
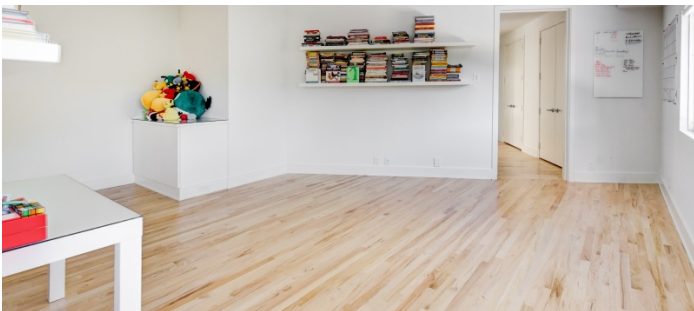
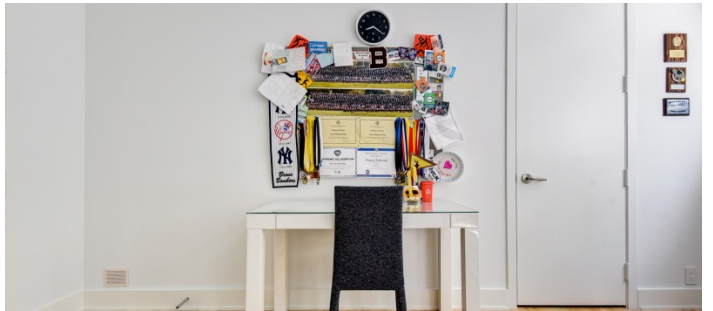




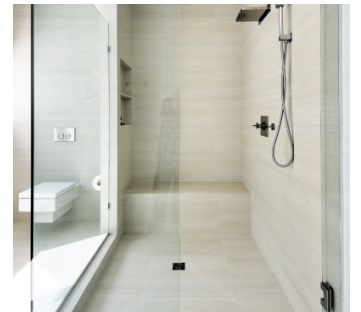




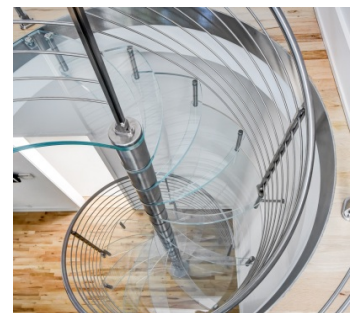
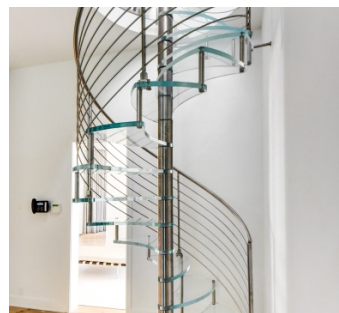
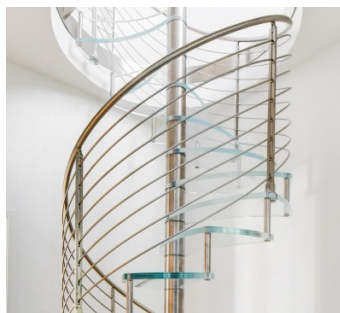
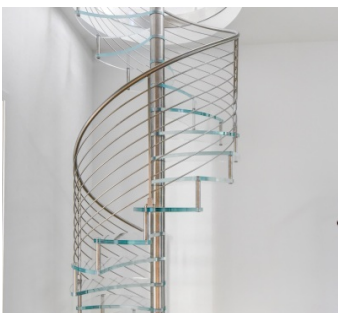
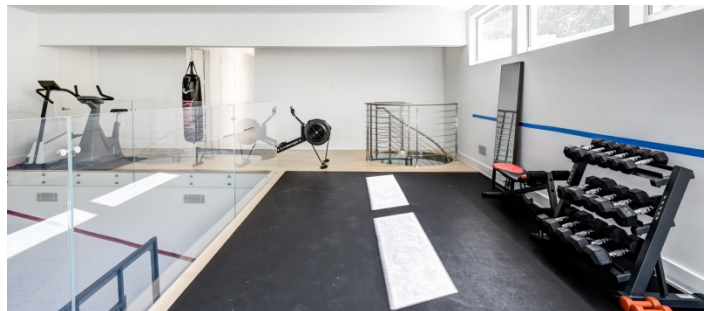
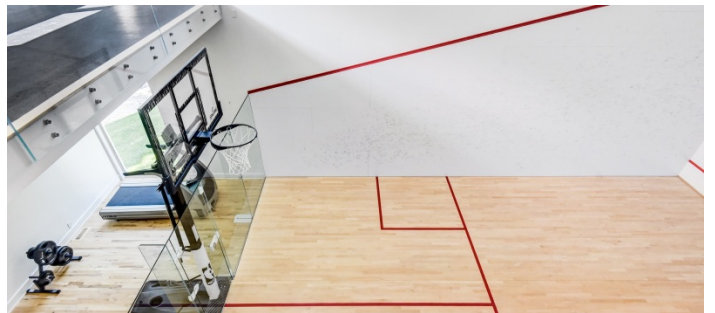
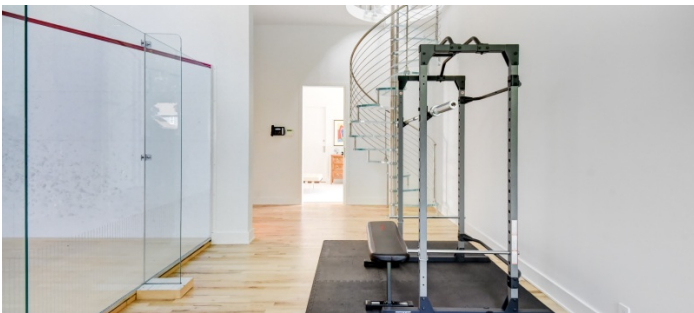
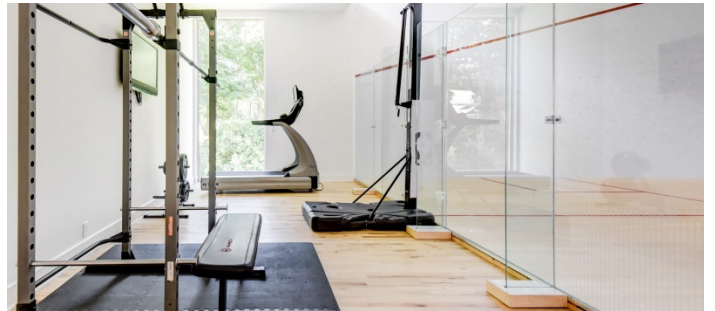
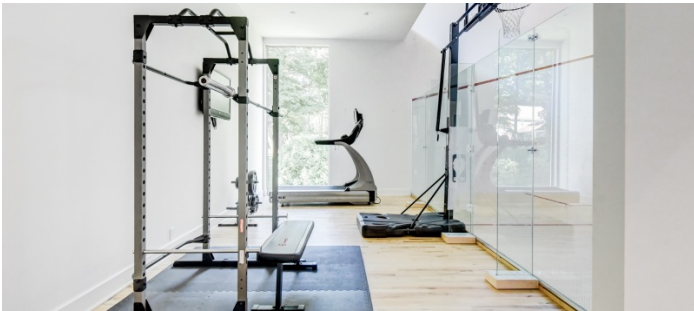
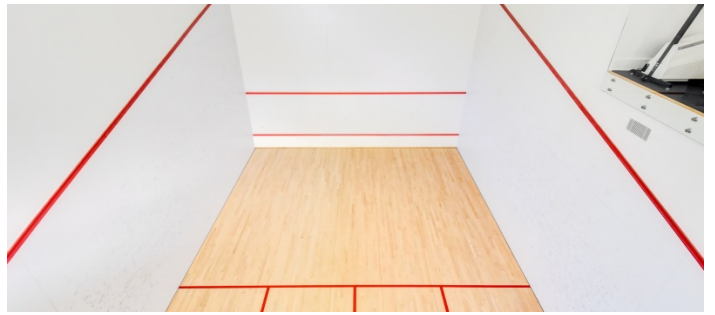


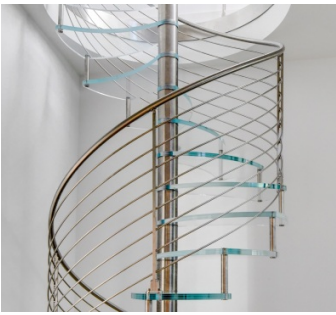


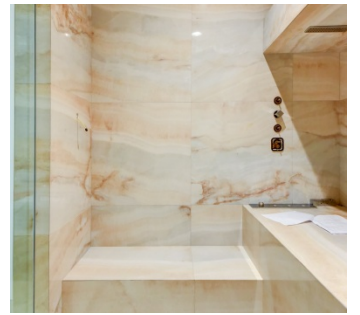
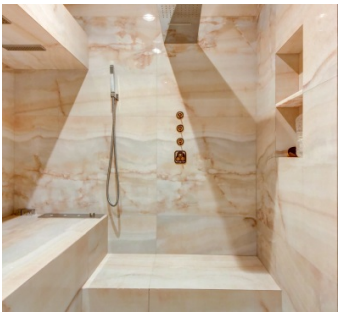




SQUASH COURT + BASKETBALL GYM







OLDER EXTERIOR PICS

