

 LOCATION

Stroudsburg, PA 18360

 SPECS

5,000 sq ft

50 acres

 DISTANCE FROM NYC

80 miles

 CATEGORIES

Barns, Cabin, House

 TAGS

60's style, 70's style, Architectural, Balcony, Bar, Barn, Bathroom, Bedroom, Billiard Table, Carpet, Deck, Fireplace, Floor to Ceiling Windows, Lake or Pond, Living Room, Masculine, Mid-Century, Modern Contemporary, Pool Outdoor, Rustic, Stone Wall, Tennis Court, Terrace Patio, Wood Floor, Woods

Notes

Amazing renovation of a secluded country house from the seventies, 5000 sq ft, 2 car garage, 1 mile long driveway, 3 floors, 2 master suites, 3 guest bedrooms, ceilings 10ft to 20 ft high.

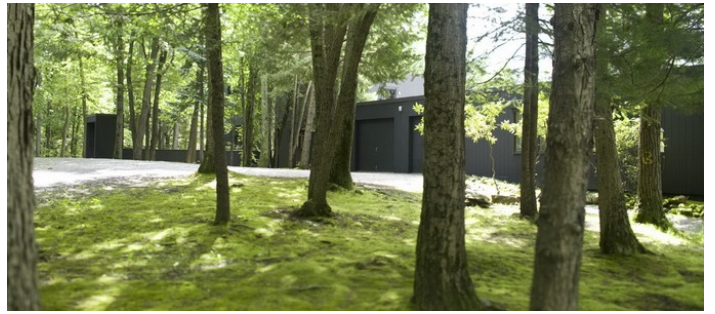
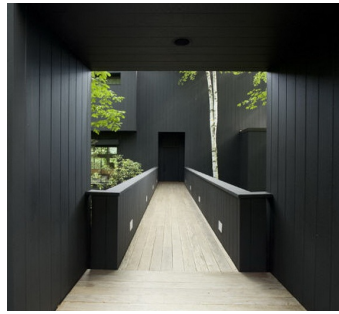
House is situated on 50 private acres of woodland and meadow on top of a hill. Property includes a barn and a one acre pond. Perched atop a hill, clad inside and outside in California red wood, the house has a perfectly south oriented glass facade, pointed to the Appalachian Mountains.

The interior mixes its original custom made furniture with newly designed pieces and antiques.

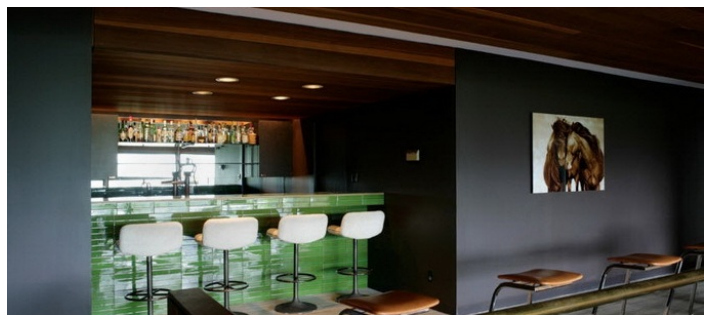
Restrictions:

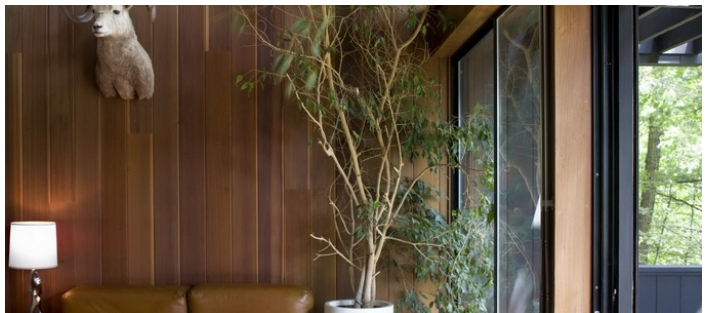
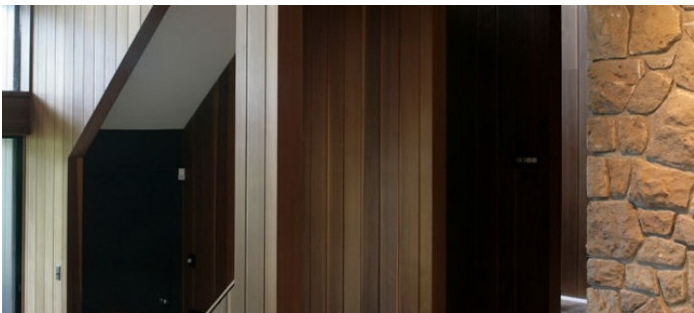
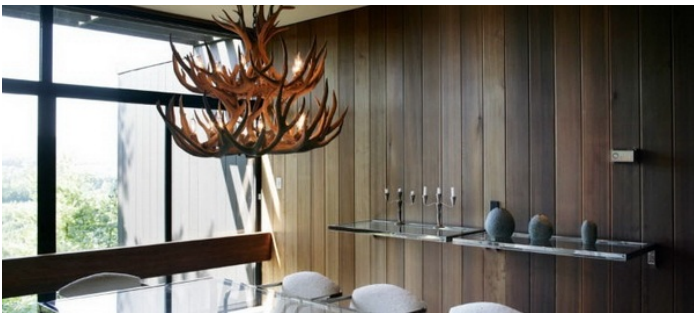
All floors must be protected.

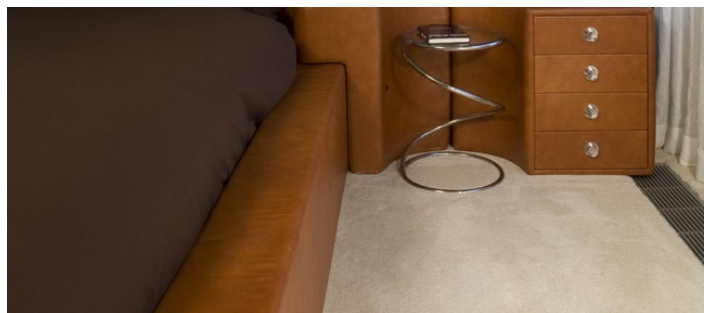
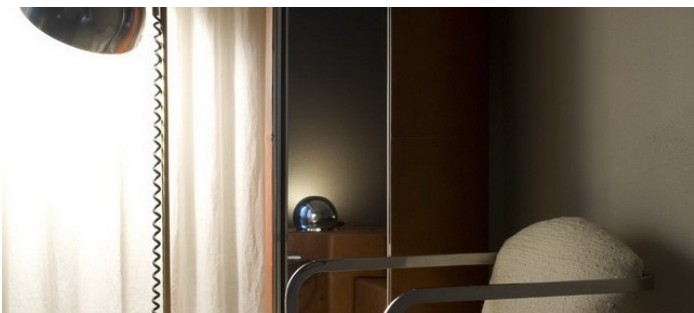
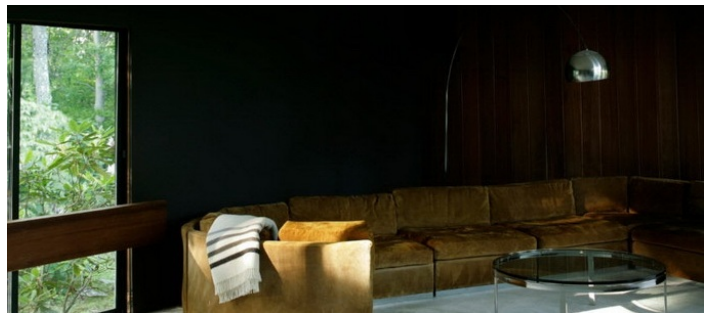
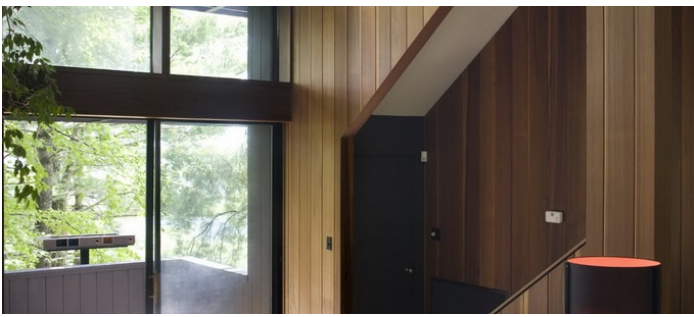
Areas of use determined in advance.

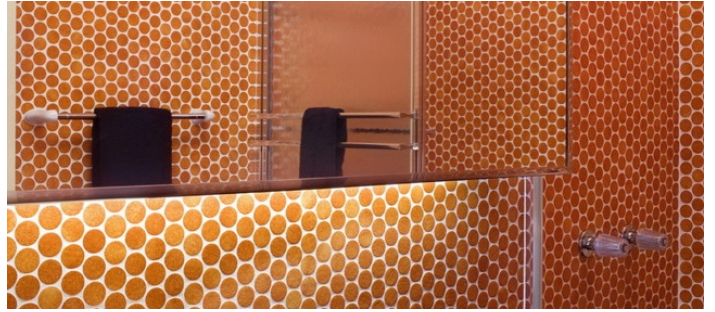
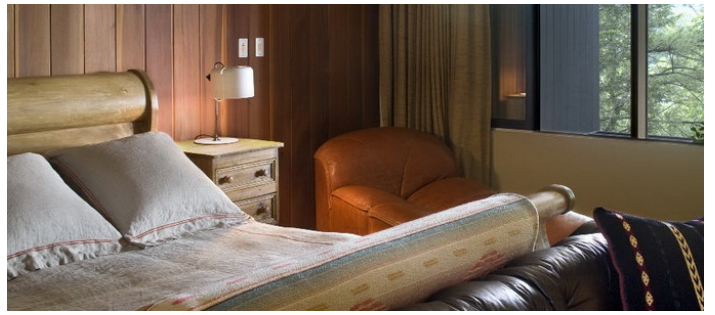
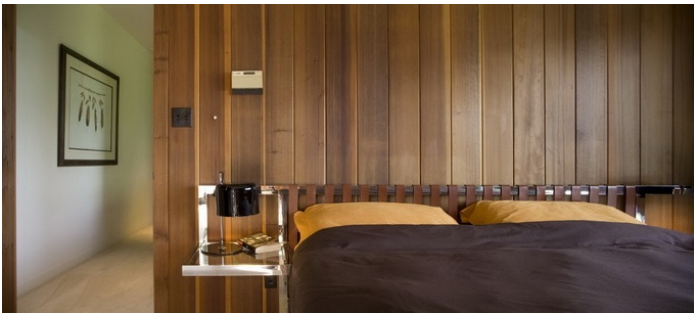




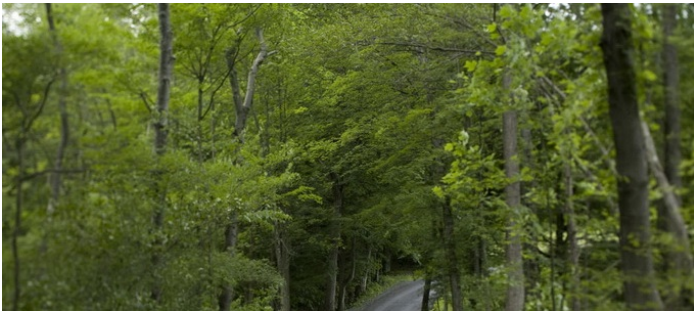
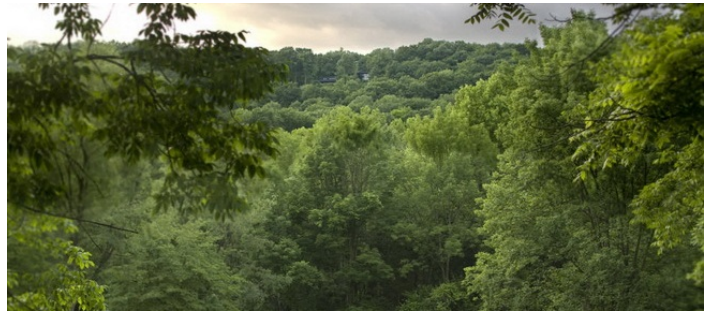
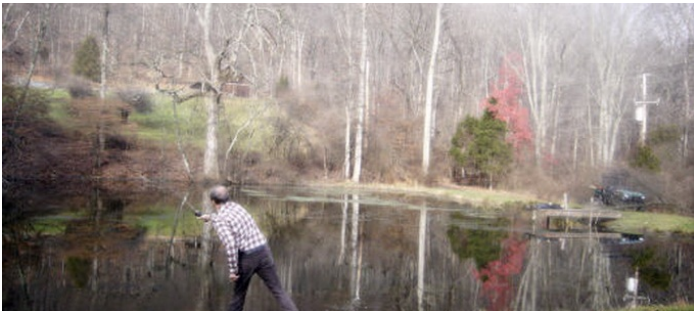












TENNIS COURT

