

 LOCATION

New York, NY 10003

 TAGS

City View, Elevator, Exposed Beam, Exposed Brick, Kitchen, Living Room, Modern Contemporary, Rooftop, Staircase, Water Tower View, White Brick Wall, White Spaces, Wood Floor

 SPECS

4,000 sq ft
14-ft ceiling height

 POWER

3 phase camlock power distribution

 CATEGORIES

* In the Zone, Apartment, Loft, Roof Top, Studio

Notes

Film friendly

2 new kitchens, 4,000 sq ft daylight studio, 14 ft ceilings, maple floors, 16 east and south facing windows(2nd floor to ceiling), 3 phase camlock power distribution, passenger and freight elevators.

The furniture in images below changed often and not always all put together, ie : the bed is not always there (and no mattress, just frame), only use for reference.

Scouting is mandatory - pieces shown below have changed or may have been removed.

Medium wood floors, columns, tall windows, open, track lighting, kitchen island, french doors.

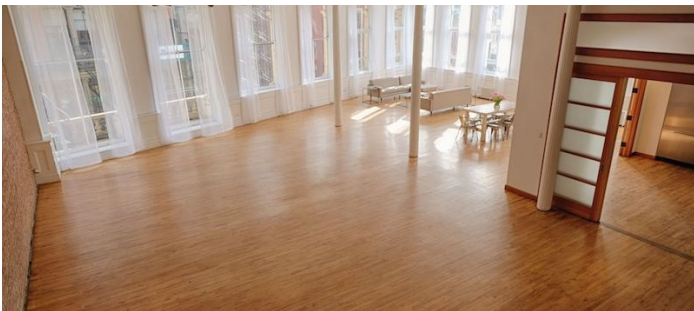
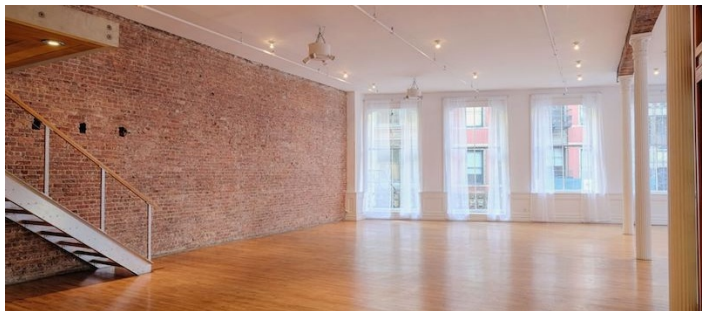
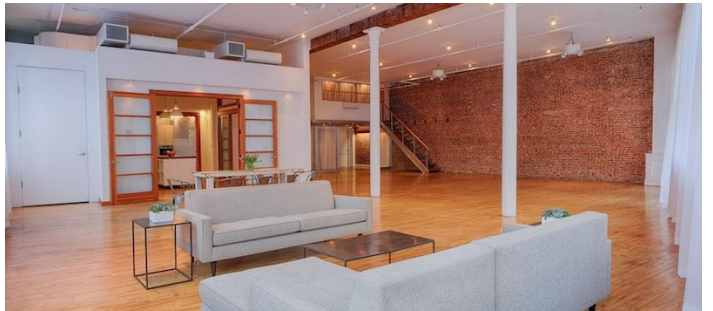
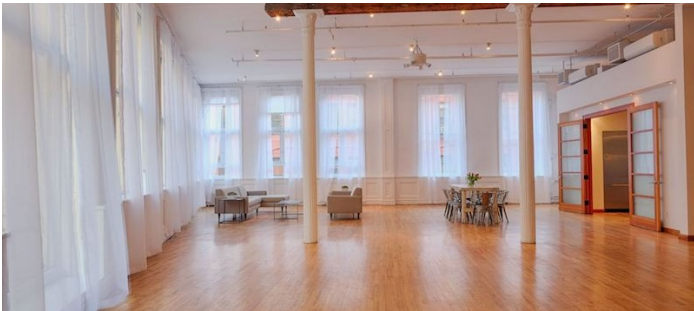
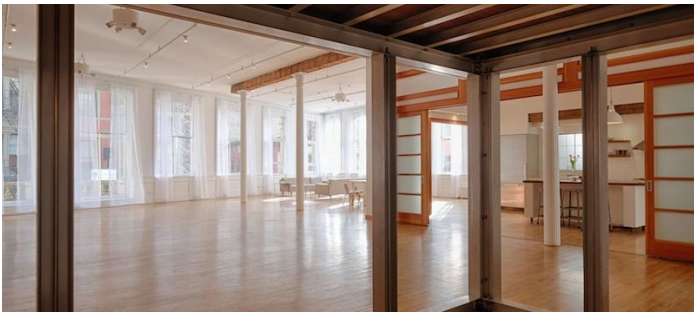
Roof top very difficult to clear.

To see space on 4th floor, same owners, go to 7063.

Restrictions:

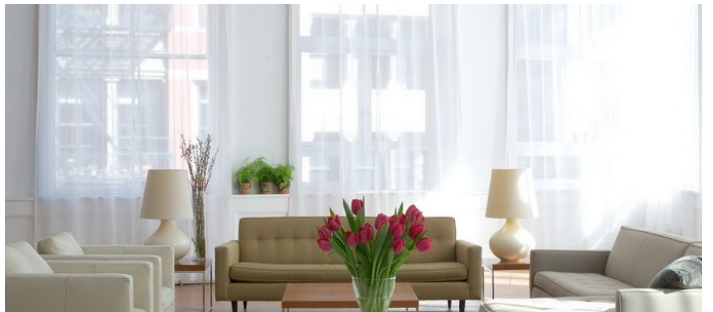
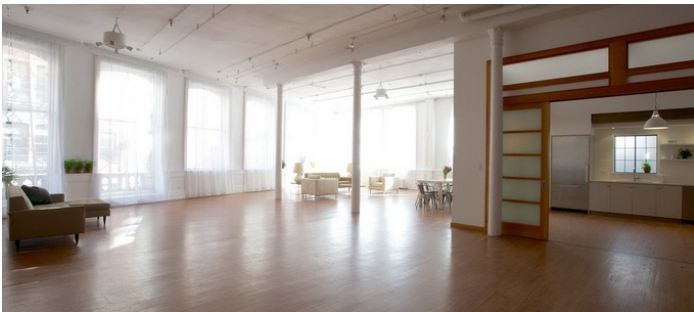
Building approval may be required.

Elevator hours: 8am-6pm, before or after it's \$50 per hour cash at door unless otherwise arranged in advance.





OLDER PICTURES FOR REFERENCE





ROOF - VERY DIFFICULT TO CLEAR

