

STUDIO 1 - VIEW FULL DETAILS BELOW

 LOCATION

New York, NY 10001

 TAGS

City View, Elevator, Modern Contemporary, White Spaces

 SPECS

Studio 1 - 3500 sq ft

Studio 2 - 2000 sq ft

Studio 3 - 3000 sq ft

Studio 4 - 3500 sq ft

Studio 5 - 5000 sq ft

Studio 6 - 4000 sq ft

Studio 7 - 6000 sq ft

Studio 8 - 5000 sq ft

 CATEGORIES

* In the Zone, Event Space, Loft, Studio

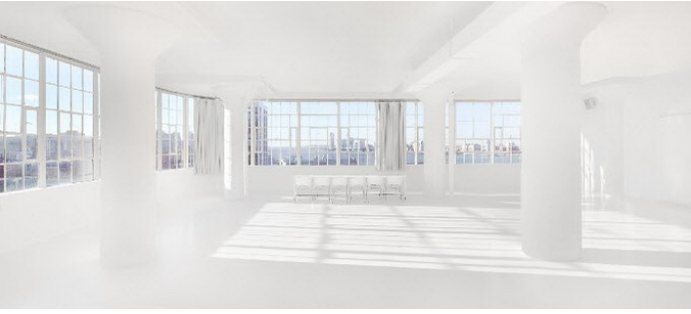
Notes

Film friendly, there are 8 different studios in this location and fees vary according to which studio is used.

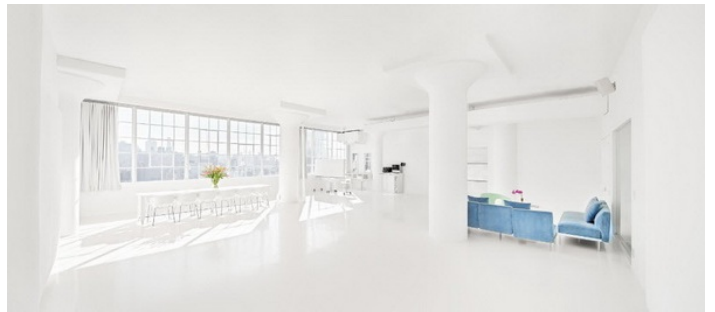
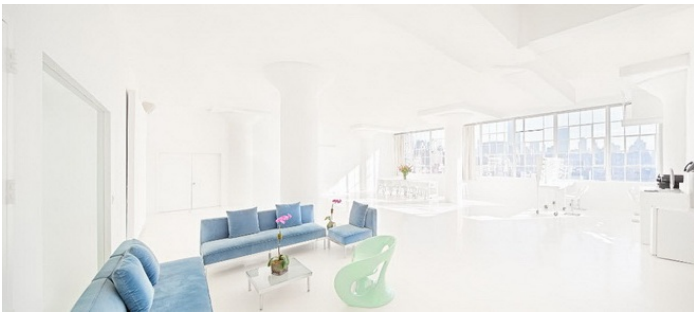
Features spacious daylight rental photography studios , in the heart of Chelsea for photographers, directors, designers, magazines, advertising agencies, televisions and production companies.

Freight elevators are available for use, scouting is recommended to determine areas of use. Great views and great light.

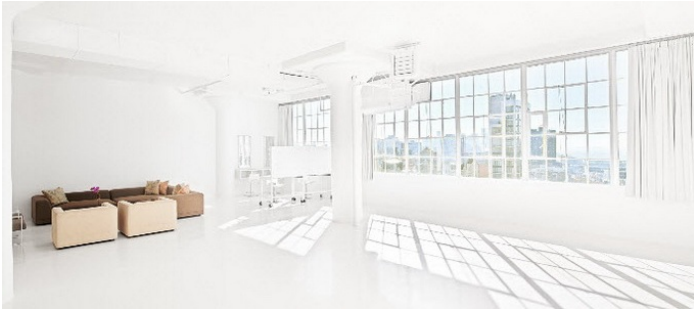
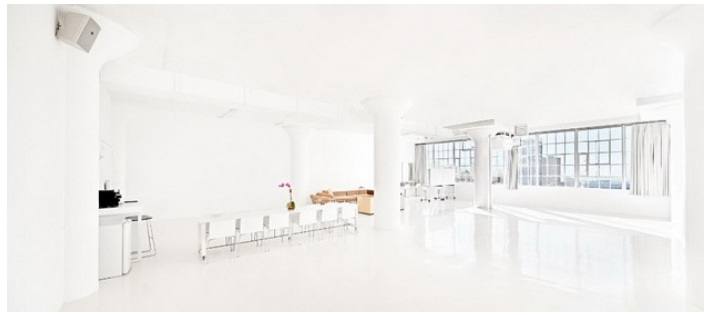
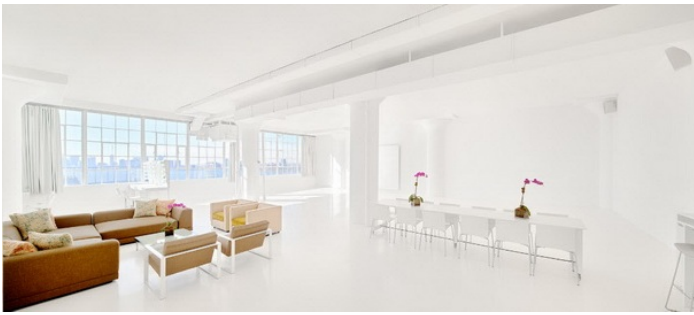
Must hire the studio's photo and digital equipment to shoot here - no exceptions.



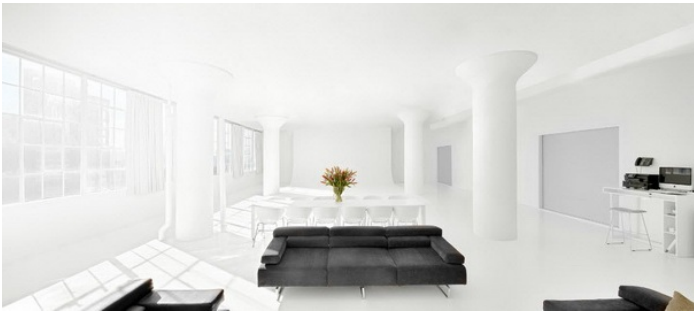
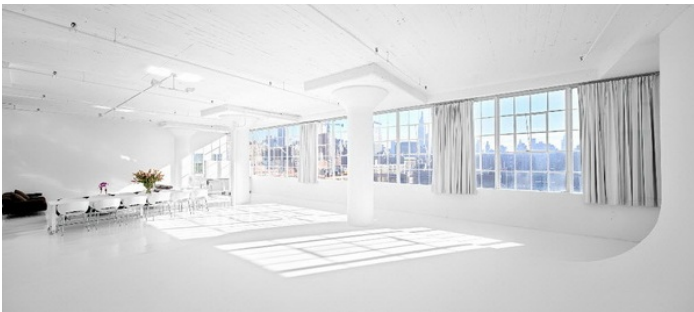
STUDIO 2 - 2000 SQ FT



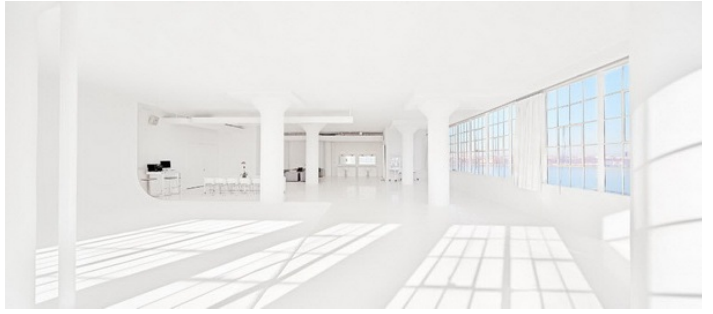
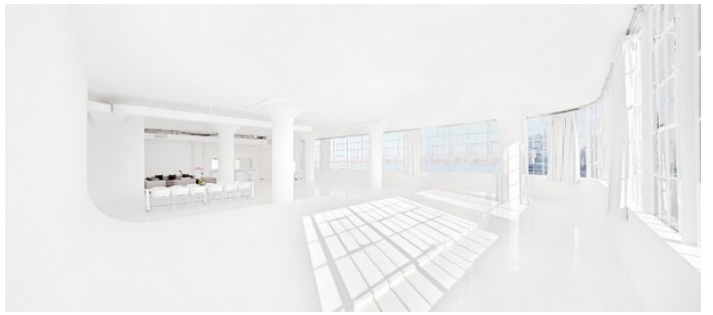
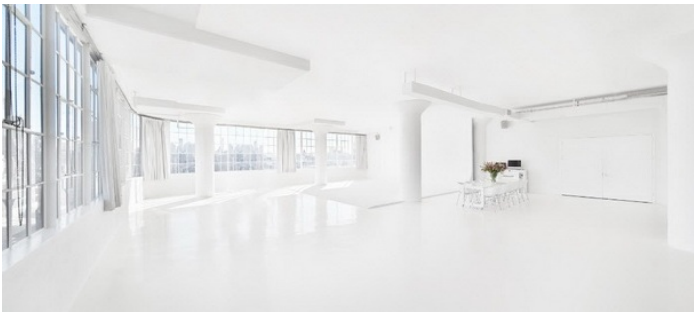
STUDIO 3 - 3000 SQ FT



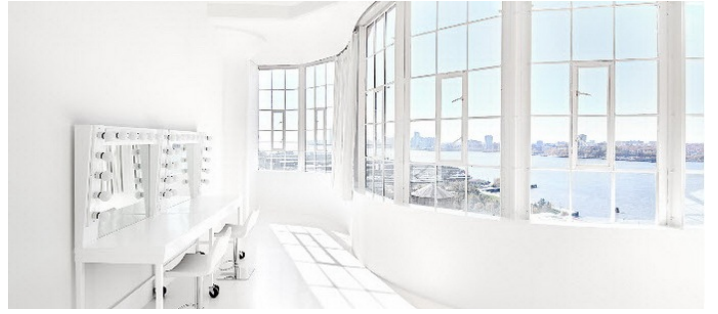
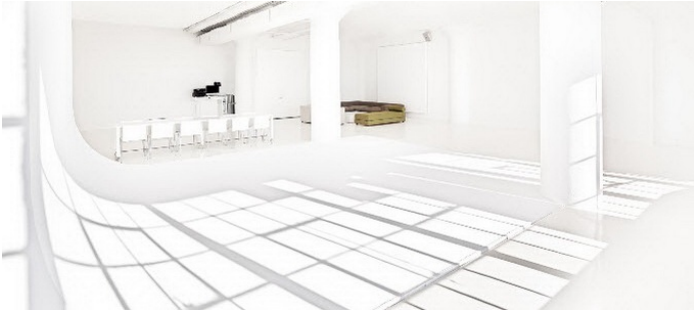
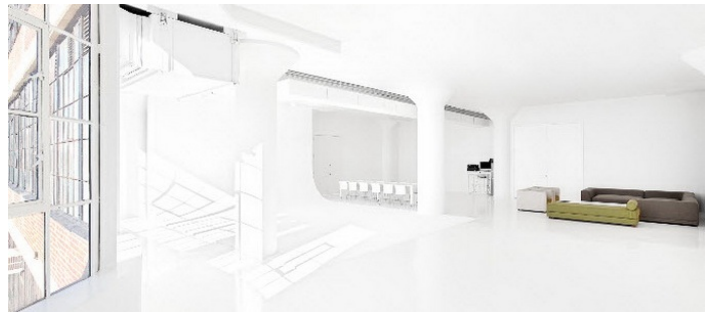
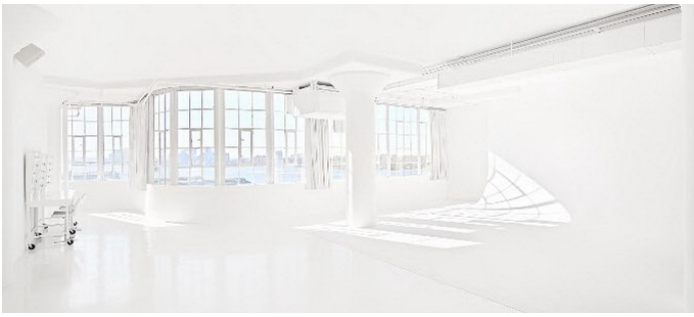
STUDIO 4 - 3500 SQ FT



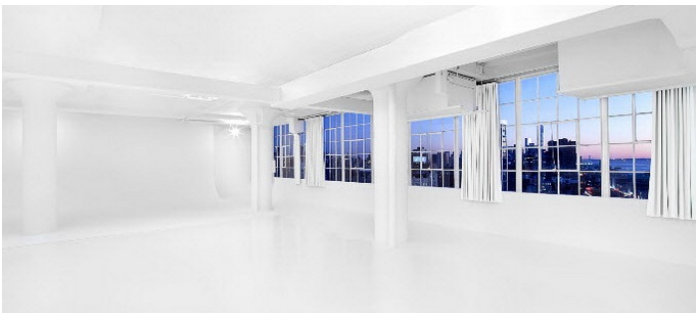
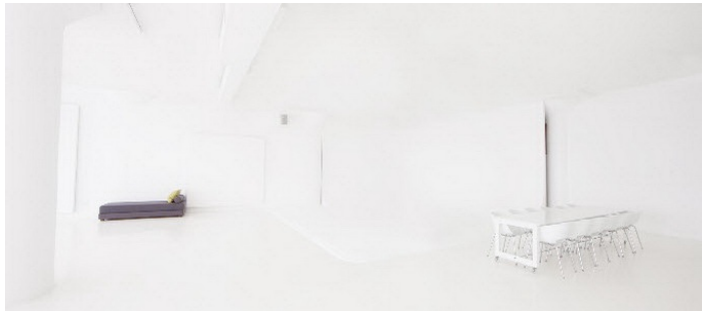
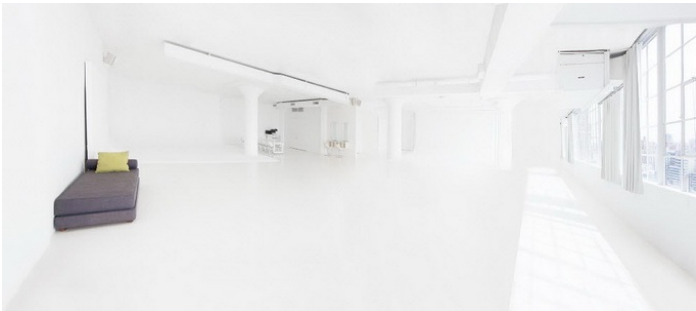
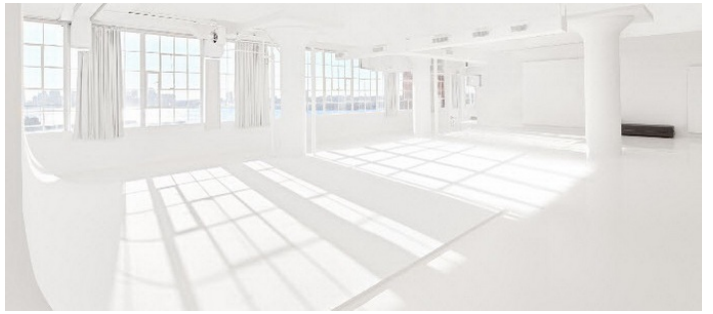
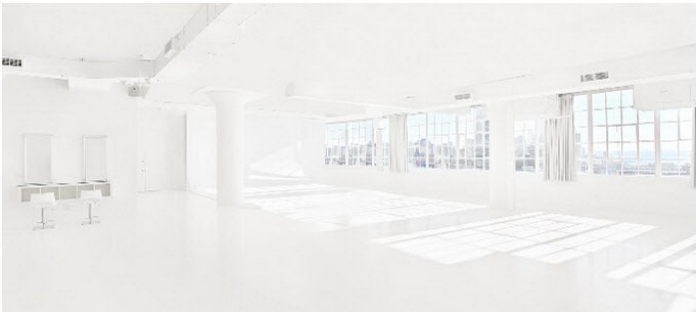
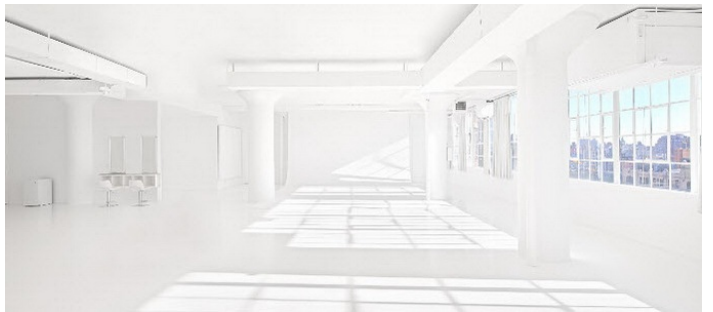
STUDIO 5 - 5000 SQ FT



STUDIO 6 - 4000 SQ FT



STUDIO 7 - 6000 SQ FT



STUDIO 8 - 5000 SQ FT

