

7126

Soho, Manhattan

LOCATION

New York, NY 10013

TAGS

City View, Empty, Floor to Ceiling Windows, Living Room, Modern Contemporary, Rooftop, Skylight, Terrace Patio, White Spaces

SPECS

Studio 1 - 4000 sq ft

Studio 2 - 4000 sq ft

Studio 3 - 3300 sq ft

Studio 4 - 4800 sq ft

Studio 5 - 2000 sq ft

Mezzanine - 3000 sq ft

Rooftop - 2500 sq ft

CATEGORIES

* In the Zone, Event Space, Roof Top, Studio

Notes

Film friendly

7 Studios and a rooftop terrace

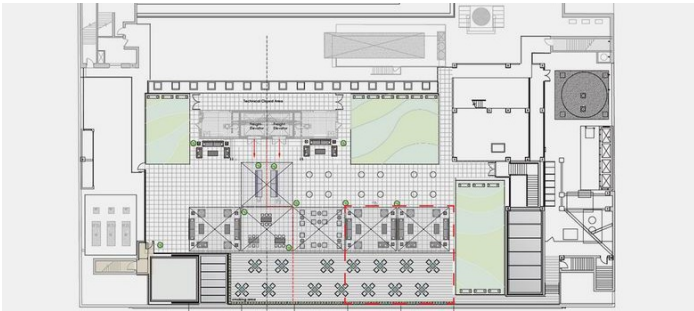
ROOF Exterior shooting space, Western views of Tribeca, 2,500 sq.ft. of shooting space, Freight elevator access

Inquire further for rainout policy

Restrictions:

All floors must be protected, booties must be worn over shoes

Areas of use determined in advance



STUDIO 1 - VIEW FULL DETAILS BELOW

Notes

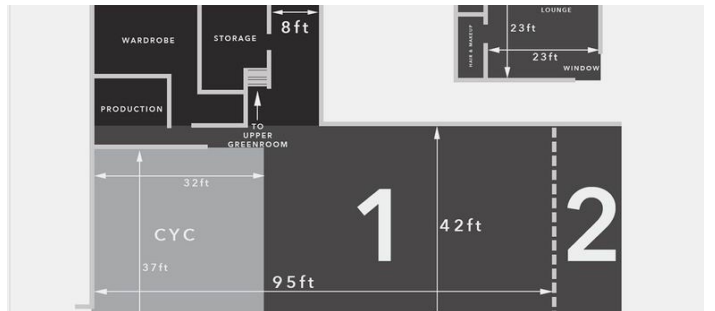
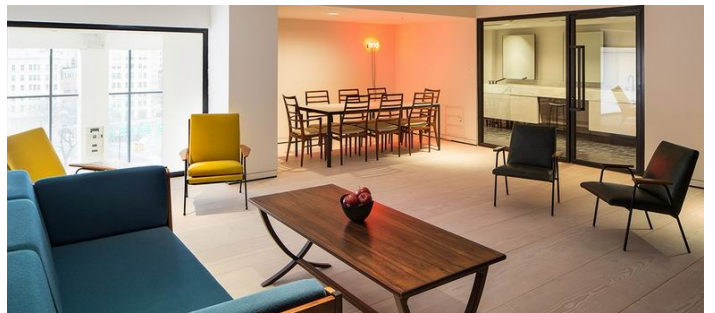
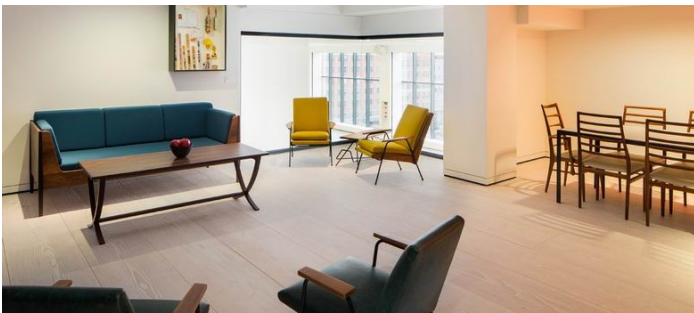
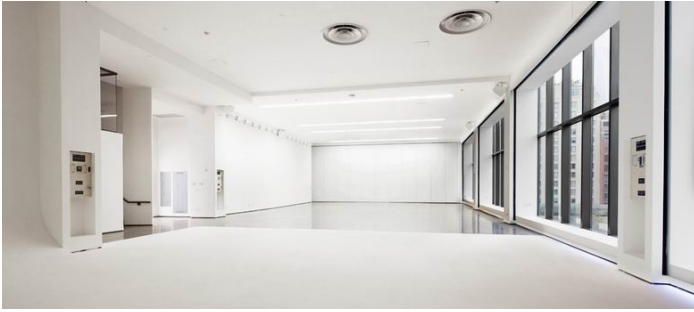
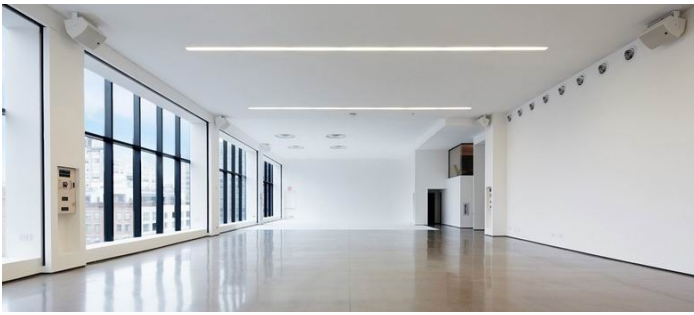
STUDIO 1

Daylight studio with cyclorama

West-facing floor to ceiling windows, 4,000 sq.ft. of shooting space, 1,000 sq.ft. of green room and production facilities, 17-ft high ceiling clearance. Dead hung box truss at 15.5 ft

Studios 1 + 2 can be combined via air-wall

- - Electronic black-out blinds
- - Two-walled, molded corner cyc (L 32' x W 38' x H 17')
- - Wireless internet 25mbps
- - Polished concrete floors, mirrored finish
- - Professional sound system with audio inputs
- - (2) 200A + (1) 100A - 3 Phase Services
- - Private facilities include:
 - - Green room
 - - Full bathroom and shower
 - - Production office
 - - Wardrobe room
 - - Hair and make-up room with daylight balanced bulbs



STUDIO 2 - 4000 SQ FT - VIEW FULL DETAILS BELOW

Notes

STUDIO 2

Daylight studio with cyclorama, 4,000 sq ft, 1000 sf green room and production facilities

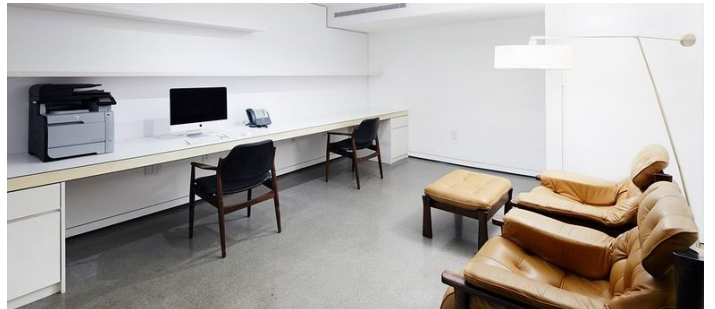
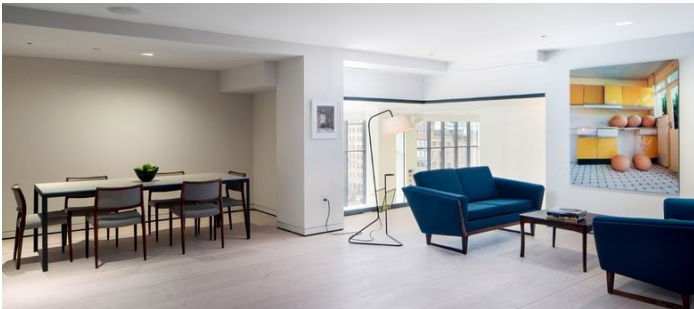
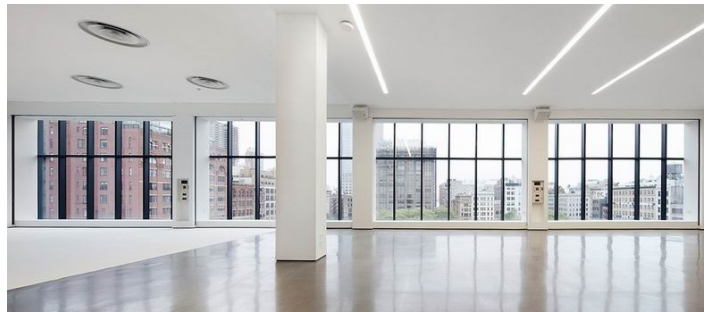
West-facing floor to ceiling windows

17 ft high ceiling clearance

Dead hung box truss at 15.5 ft

Studios 1 + 2 can be combined via air-wall

- - Electronic black-out blinds
- - Two-walled, molded corner cyc (L 32' x W 38' x H 17')
- - Wireless internet 25mbps
- - Polished concrete floors, mirrored finish
- - Professional sound system with audio inputs
- - (2) 200A + (1) 100A - 3 Phase Services
- - Private facilities include:
 - - Green room
 - - Full bathroom and shower
 - - Production office
 - - Wardrobe room
 - - Hair and make-up room with daylight balanced bulbs



STUDIO 3 - 3300 SQ FT - VIEW FULL DETAILS BELOW

Notes

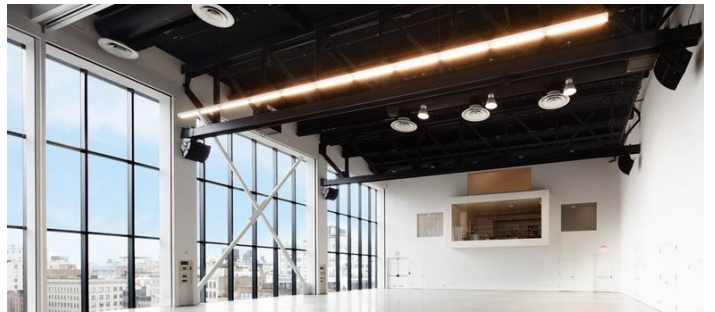
Studio 3

Daylight studio, West-facing floor to ceiling windows, 3,300 sq. ft. of shooting space 1,000 sq. ft. of green room and production facilities, 22 ft high clearance to the beams, 30 ft high clearance to the ceiling in between beams. Dead hung box truss at 24 feet

Studios 3 + 4 can be combined via air-wall

Specifications

- - Electronic black-out blinds
- - Wireless internet 25mbps
- - Polished concrete floors, matte finish
- - Professional sound system with audio inputs
- - (1) 400A + (1) 200A - 3 Phase Services
- - Private facilities include:
 - - Green room
 - - Full bathroom and shower
 - - Production office
 - - Hair and make-up room with daylight balanced bulbs



STUDIO 4 - 4800 SQ FT - VIEW FULL DETAILS BELOW

Notes

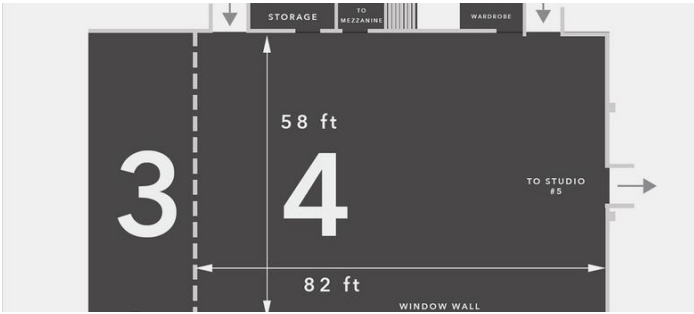
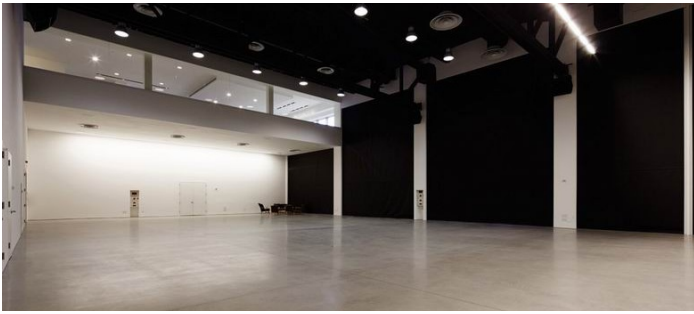
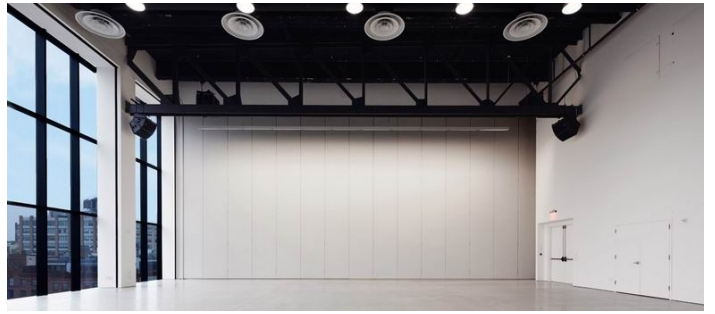
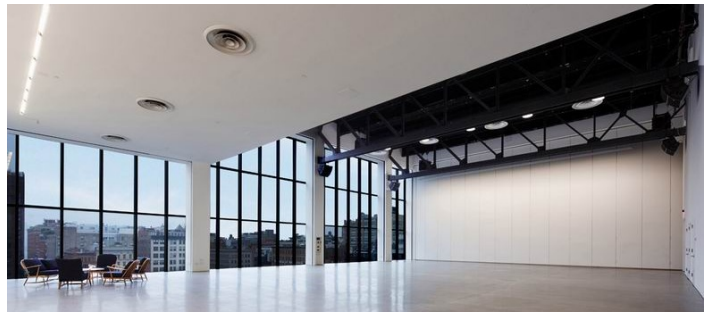
STUDIO 4

Daylight studio, West-facing floor to ceiling windows, 4,800 sq. ft. of shooting space, 22 ft high clearance to the beams, 30 ft high clearance to the ceiling in between beams. Dead hung box truss at 24 ft

Studios 3 + 4 can be combined via air-wall

Specifications

- - Electronic black-out blinds
- - Wireless internet 25mbps
- - Polished concrete floors, matte finish
- - Professional sound system with audio inputs
- - (1) 400A + (2) 200A - 3 Phase Services



STUDIO 5 - 2000 SQ FT - VIEW FULL DETAILS BELOW

Notes

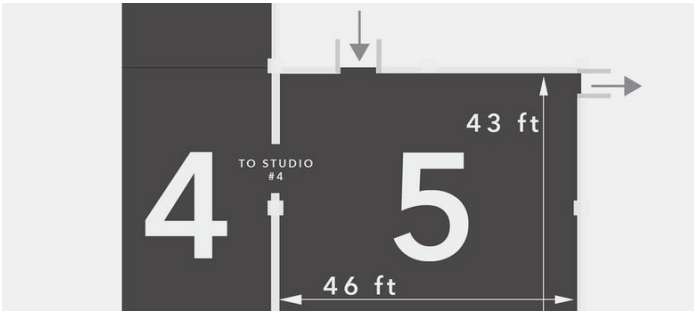
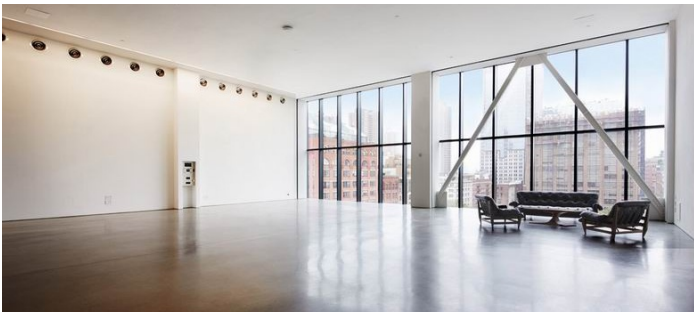
STUDIO 5

Daylight studio, West-facing floor to ceiling windows, 2,000 sq. ft. of shooting space, 17 ft high ceiling clearance

Studios 4 + 5 are accessible via adjoining door

Specifications

- - Electronic black-out blinds
- - Wireless internet 25mbps
- - Polished concrete floors, matte finish
- - Professional sound system with audio inputs
- - (1) 200A + (1) 100A - 3 Phase Services



MEZZANINE - 3000 SQ FT - VIEW FULL DETAILS BELOW

Notes

MEZZANINE

Daylight ancillary space, West-facing, floor to ceiling windows, Overhead skylight, 3,000 sq.ft. floor space.
Private stairwell into Studio 4

Specifications

- - Wireless internet 25mbps
- - Polished concrete floors, mirrored finish
- - (1) 200A - 3 Phase Service
- - Four private unisex bathrooms

