

STUDIO 1 - 3200 SQ FT - VIEW FULL LOCATION DETAILS BELOW



LOCATION

Brooklyn, NY 11232



SPECS

Studio 1 - 3200 sq ft

Studio 2 - 1300 sq ft



TAGS

City View, Distressed Patina, Eclectic Quirky, Elevator, Empty, Exposed Brick, Fire Escape, Graffiti, Kitchen, Living Room, Modern Contemporary, Raw Industrial, Rooftop, Staircase, White Brick Wall, Wood Floor



POWER

3 phase / 200v power



CATEGORIES

* In the Zone, Event Space, Loft, Roof Top, Studio, Warehouse / Factory / Industrial

Notes

Film friendly

Studio One is a raw, open 3200 sq/ft room and is our main shoot space. Features include six large windows, rustic wood floors, brick walls and other industrial elements that hint back to the 1930s when the space was occupied by a coffee roasting coffee. Additionally, our shoot kitchen equipped with a gas range, stove and microwave is perfect for food photography.

Have racks, steamer, hair and mu stations, sound system, available.

Climate controlled - Elevator directly to studio.

Studio Two is 1300 sq/ft. The space features 16' ceilings, original exposed brick walls, finished hardwood floors and a balcony lounge area. Load your gear in using the elevator or our industrial-grade electric conveyor belt on the side stairs.

Rooftop - access via fire escape.

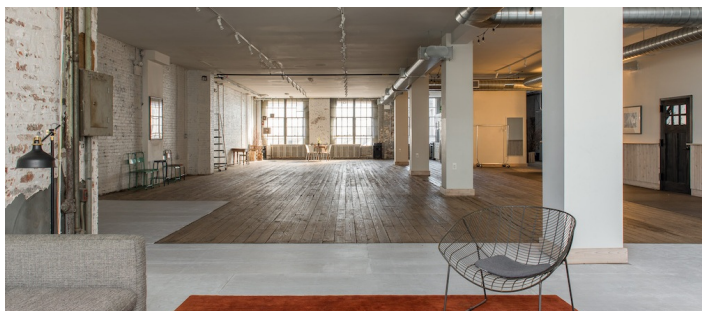
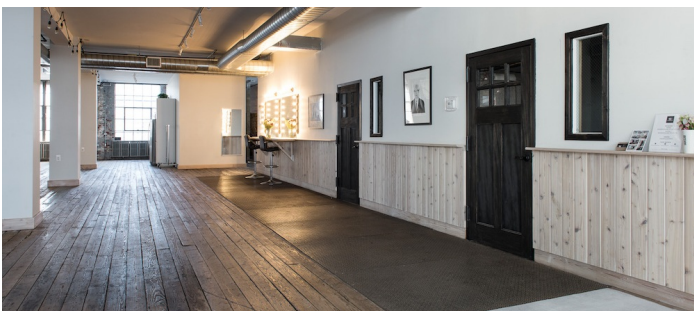
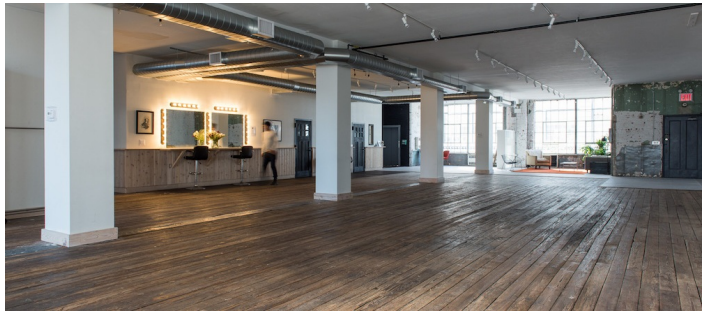
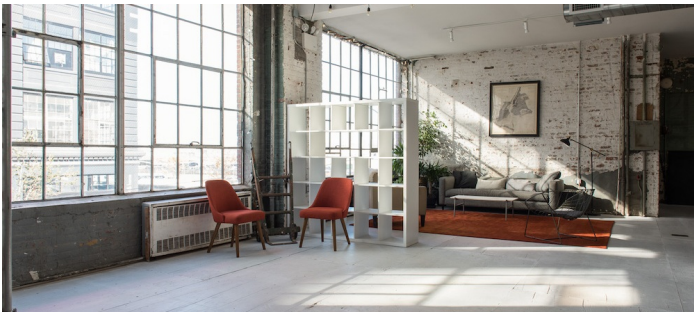
Restrictions:

All floors must be protected, booties must be worn over shoes

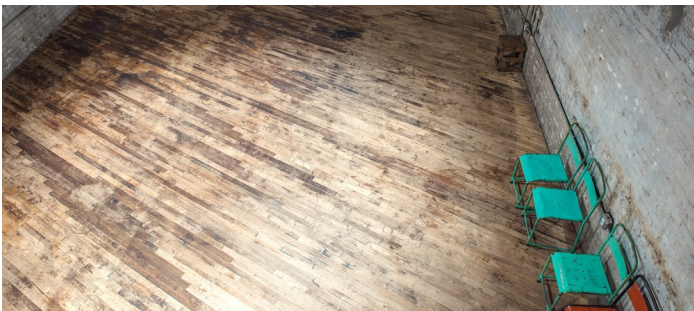
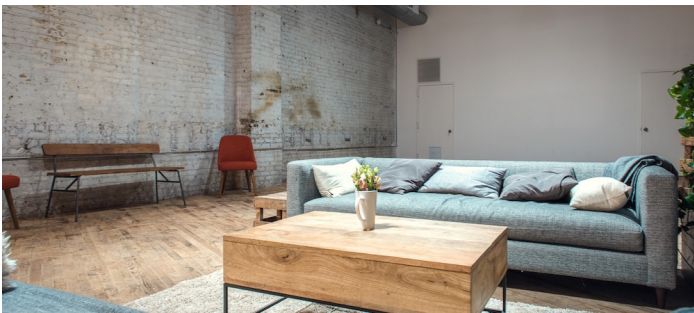
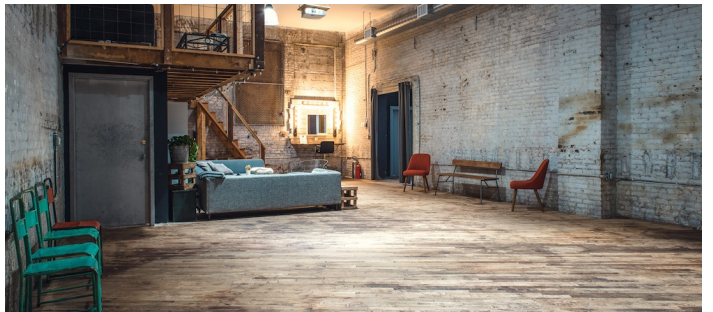
Areas of use determined in advance

There's a cleaning fee for any productions that involve cooking or food prep in the shoot kitchen. We also do not permit food prep or cooking for half day shoots.

You're welcome to bring your own equipment, but all equipment rentals must be run through the studio



STUDIO 2 - 1300 SQ FT





SIDE ROOFTOP - ACCESS VIA FIRE ESCAPE



IMAGES FROM PAST EVENTS HOSTED



