

 LOCATION

Brooklyn, NY 11201

 POWER

Generators required (outside use only)

 TAGS

City View, Distressed Patina, Elevator, Empty, Exposed * In the Zone, Roof Top, Warehouse / Factory / Beam, Exposed Brick, Graffiti, Raw Industrial, Rooftop, Industrial White Brick Wall

 CATEGORIES

Notes

No heat, minimal electricity, no air conditioning (but does stay cool).

Freight elevator available. Elevator fees of \$250-\$350 depending on hours per day, to be paid cash on day of use.

Restrictions:

As of 2015, roof rules, no weekends, no nite shoots, minimum 12 people on roof at one time.

Motorhome mandatory, scouting is mandatory (some buildings being built changing views).

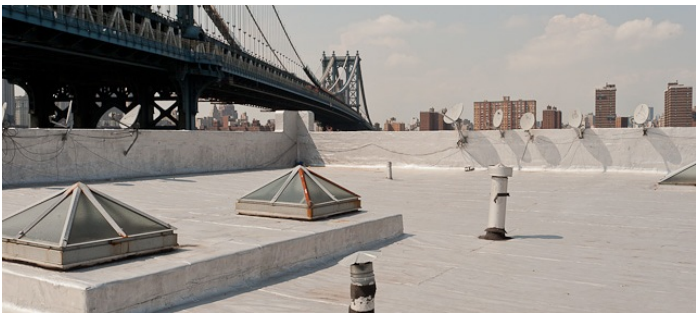
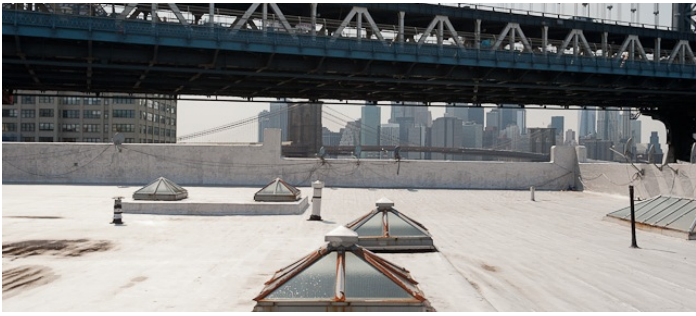
Roof access only by ladder for 7th floor, 6th floor freight goes to roof. Roof must have plywood down where you build a platform.

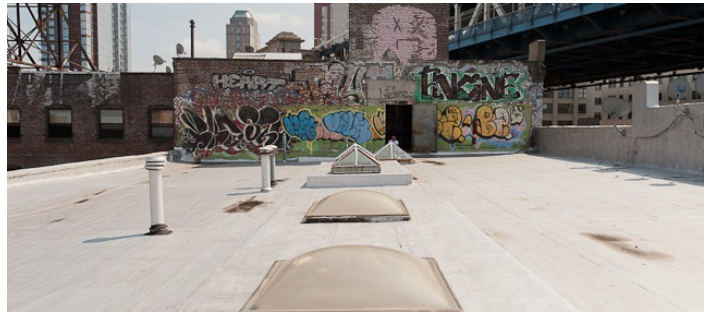
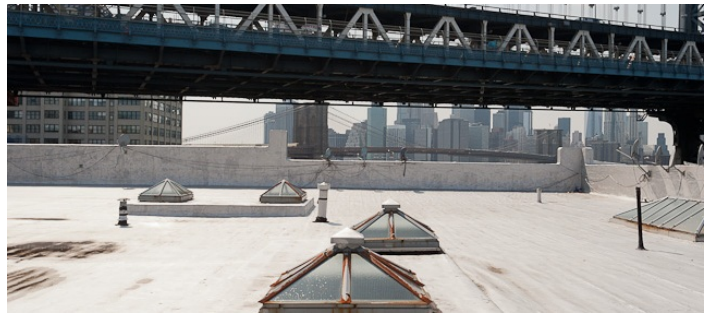
This location does not keep holds - it's first come first serve unless a \$1500 non refundable deposit is paid.

Generator or battery packs are mandatory, there is minimal avail power. No generator allowed inside the space (too dangerous with fumes) If you bring a portable Generator, it may be used on the roof. Larger generators must be positioned on the street outside and run cables inside.

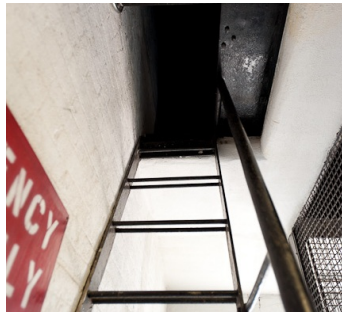
Some of graffiti has been removed.

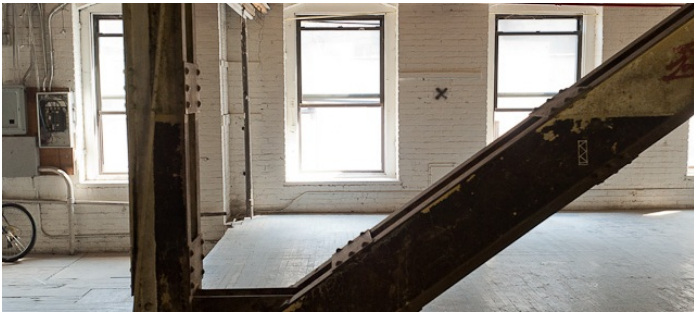
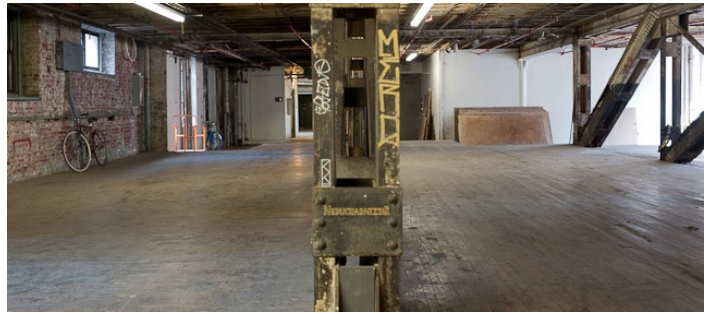
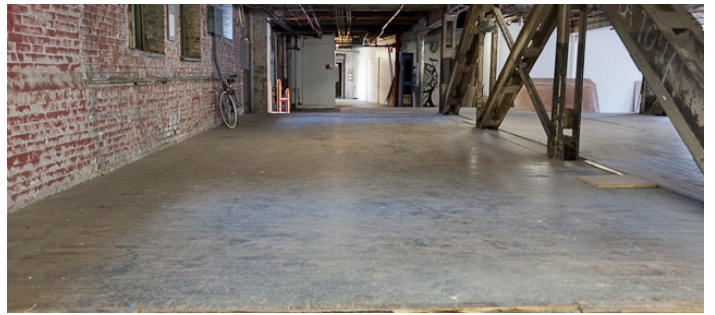
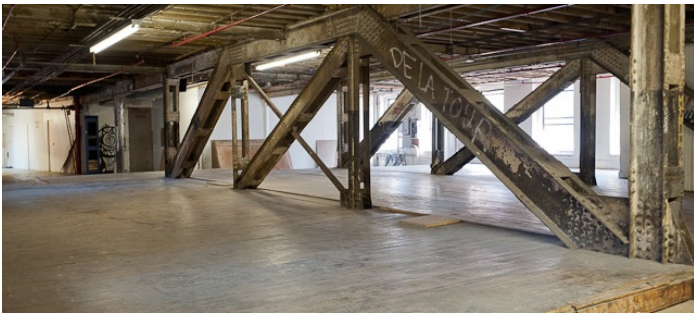
No smoke machines permitted.

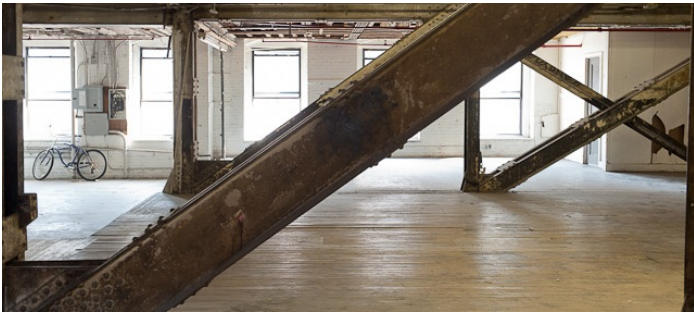
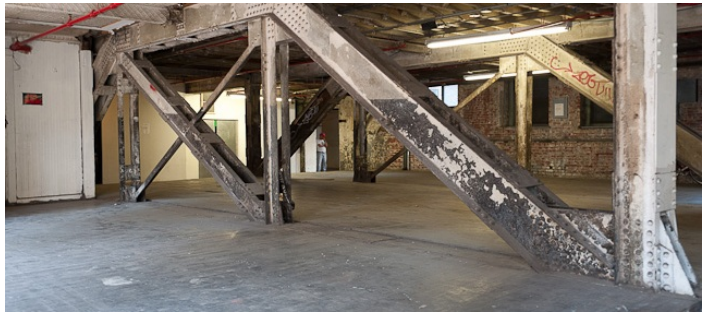
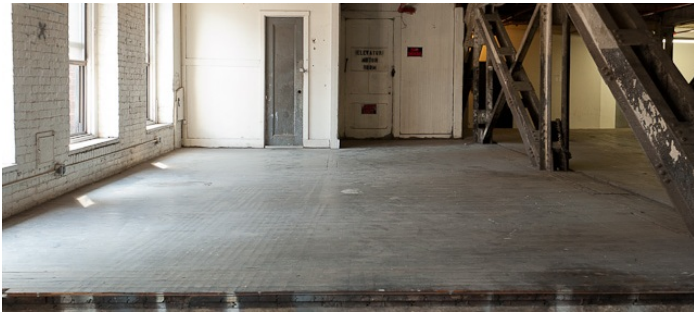
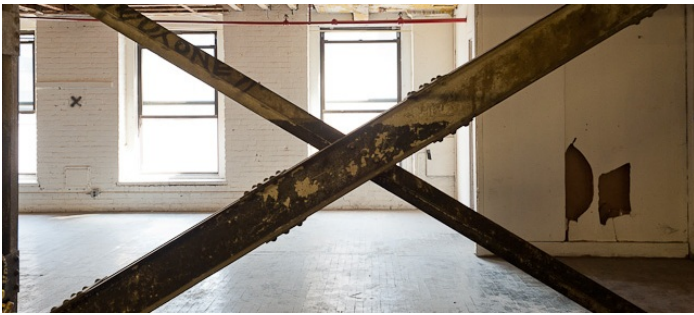


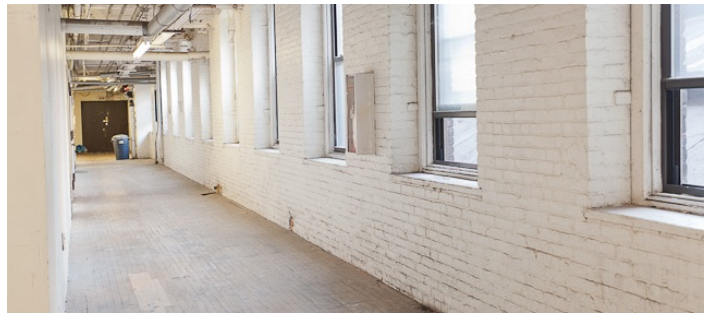












2ND FLOOR HOLDING SPACE

