





AREA 2 - VIEW FULL DETAILS BELOW

 LOCATION
Brooklyn, NY 11237

 TAGS
Distressed Patina, Eclectic Quirky, Exposed Beam, Exposed Brick, Fire Escape, Graffiti, Kitchen, Living Room, Raw Industrial, Rooftop, Skylight, Staircase, White Brick Wall

 SPECS
Square Footage: 15,000
Ceiling Height: 24' to 37'
Dinner Capacity: 220
Cocktail Capacity: 1,500

 POWER
300 amp cam-lok

 CATEGORIES
* In the Zone, Apartment, Artist Studio / Gallery, Eve Space, Loft, Roof Top, Studio, Warehouse / Factory / Industrial

Notes

Film friendly

Area 2 – 2,600 sq. ft. [Approx. 52’ x 50’], Ceiling Height: 24’ floor to A-Frame ceiling, Load-bearing Beams: 13’ from floor, 12’ apart, Ground Level/Drive In (through Courtyard or A3), Loading Bay to Courtyard (8’ x 10’ h) – manual. Accessible via AREA 3 loading bays. Quick and easily blockable skylights. Connects to 2600 sq. ft. Courtyard and Drive and 4000 sq. ft.

Area 3• Connects to Hair & Make-up Room, ExecutiveHair & Make-up Room• Fully Heated/ Vented • Suitable for flooding – water source on stage• Suitable for pyrotechnics (concrete/ brick construction). On-site distro package available for rent – please check with staff regarding availability prior to shoot

It is possible to drive into the Courtyard from the Driveway

Loft Apartment, a sunny 1500 square foot, two bedroom residence – complete with wood-beam ceilings and raw brick walls.

Many props available for rental, charged per piece. Must scout to determine what is needed

Prop List: theater chairs, royal rose chair, 3 metal bar stools with fabric interchange, beauty stools, wood chairs, woven chairs, dining chair, stained ottoman, mini wooden stool, lamps, mirrors, ladders, coffee tables, parlor pink worn chair, other stools, lounge chairs, armchair, rocking chairs, ottomans, studio folding table, drafting desk with horses, metal beams, elevator, grey stairs, trolley and dolly, scaffold, rusted fan, garbage cans, “A”train gates, Greek column, black steps, roofing ladder, lock box, scrap pile, stoop, metal gates, shovel, shelving, etc

Restrictions:

Security Deposit required for all shoots

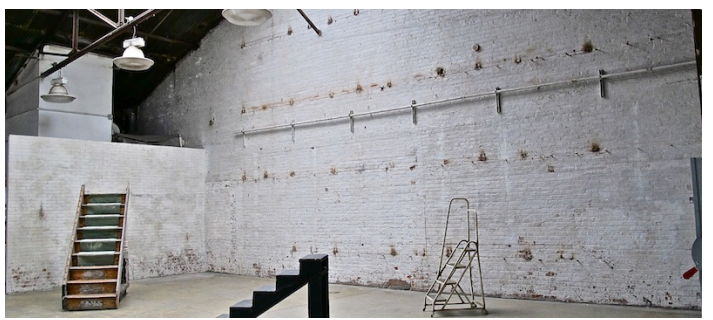
Roof has some restrictions and must be requested separately from the rest of the space, only small amount of people permitted on roof, must protect room

All equipment can be rented through the location

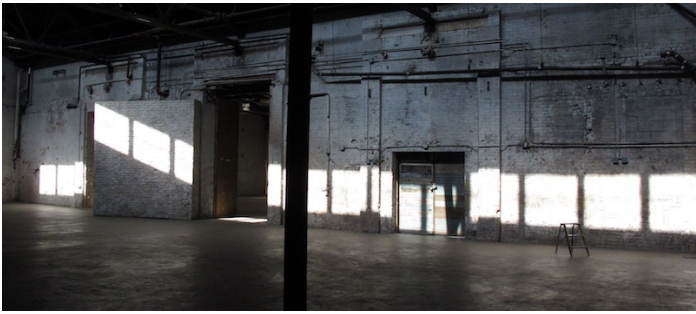
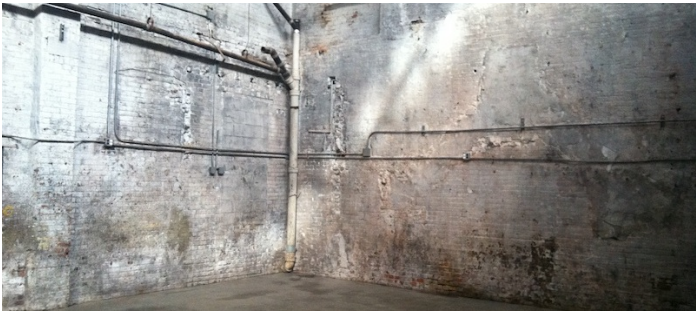
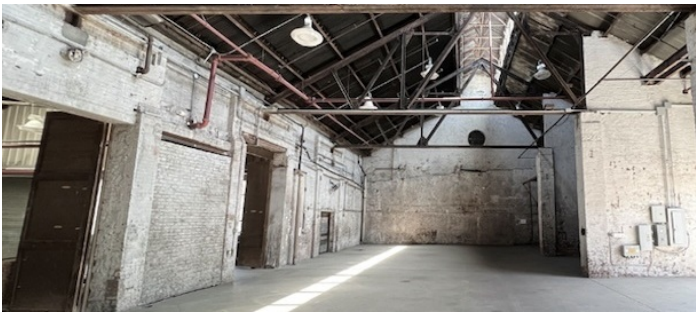
All fees are determined by areas of use

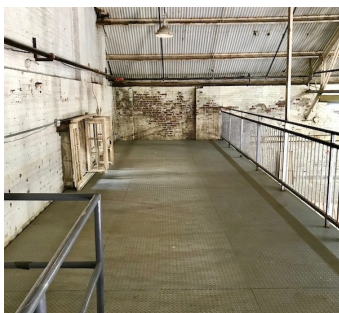
Also on premises are 30 artists studios (different ones available at different times please note, some ‘working studios’ some empty), and must be cleared separately

Please note this location has a standard shooting hours of 8am-8pm, anything before or after those hours are higher fees and considered overtime even if no overtime

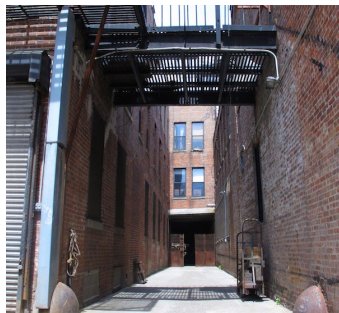
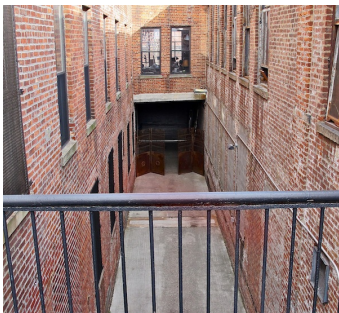
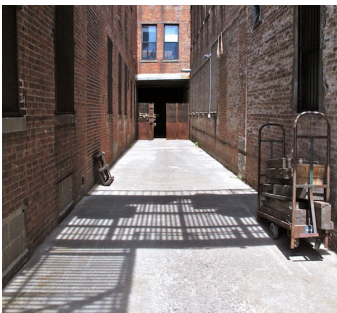
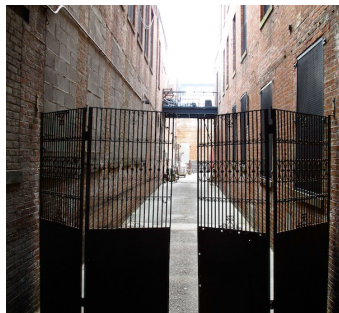






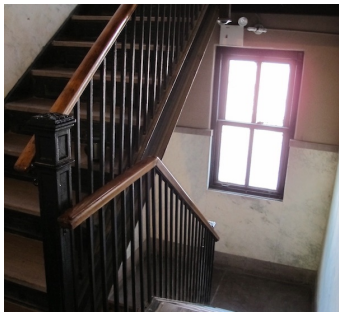
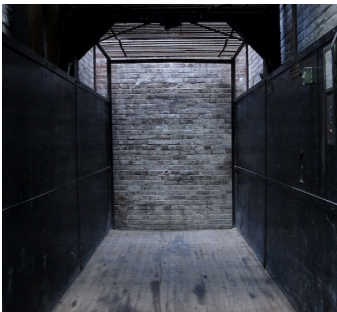


EXTERIOR, COURTYARD, DRIVEWAY



ROOF









FLOORPLAN

