


8276

# Thomaston, CT

 LOCATION  
Thomaston, CT

 CATEGORIES  
Airport / Bus / Train

 DISTANCE FROM NYC  
98 miles

 TAGS  
Colorful, Distressed Patina, Raw Industrial, Traditional

## Notes

Film friendly

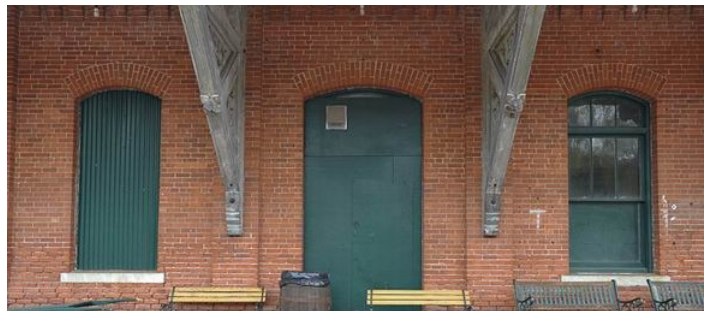
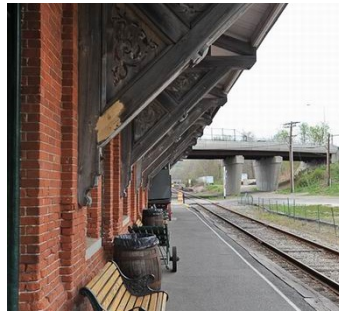
This is a museum and working railroad

Extensive collection of New England rolling stock, including locomotives of all types, passenger cars, freight cars, and cabooses. New England railroad artifacts dating from the 1840's to the present, everything from tickets to signal towers.

The station was built in 1881, the Railroad Operates 20 miles of scenic railway from Waterbury to Torrington, Connecticut, 20 miles of track with uninterrupted use, 8 miles run along of the Naugatuck River (River crossings, 4 over head crossings, 2 200 foot high gorge cuts, the only RR in U.S. that runs the face of a Dam)

All types of road crossings, 2 miles of parallel road for tracking shots, 80 pieces of roiling stock

Many restrictions apply























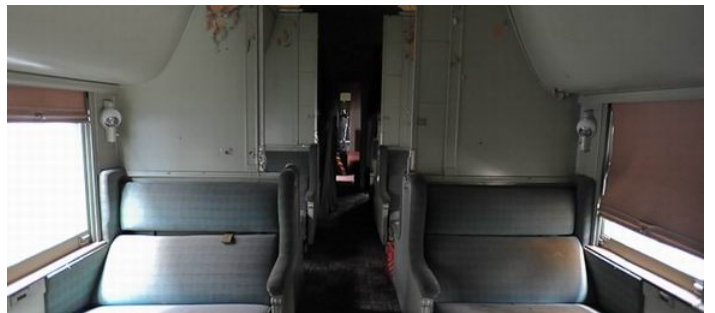
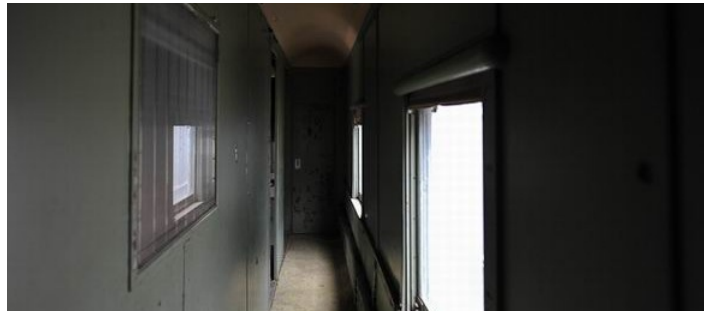
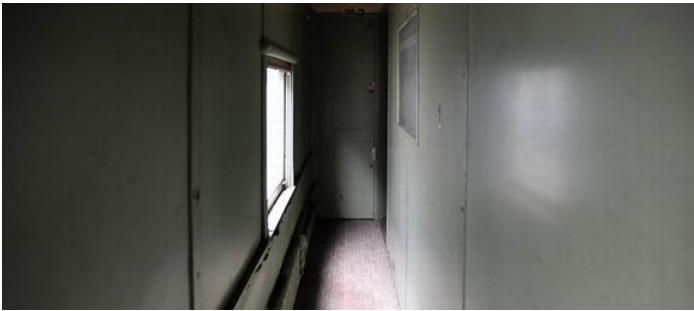
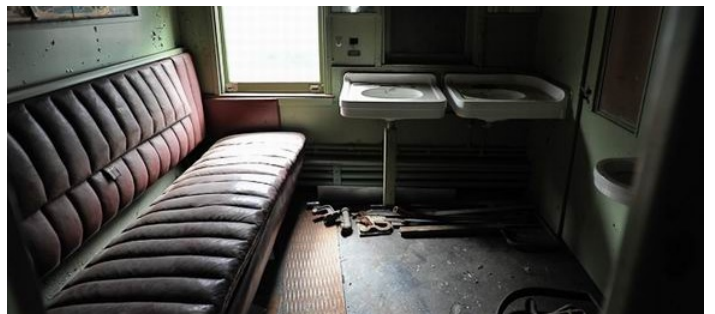




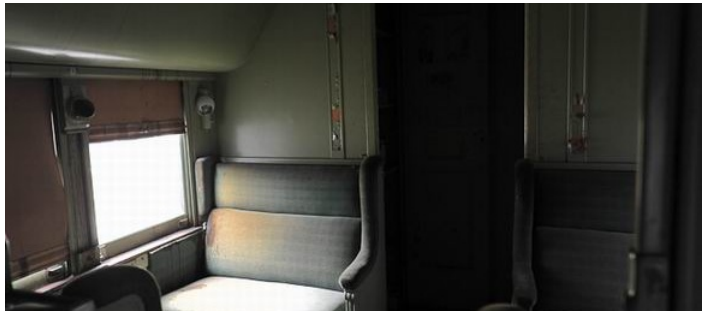
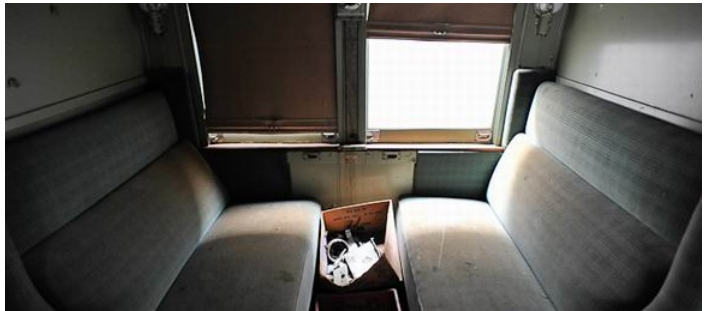




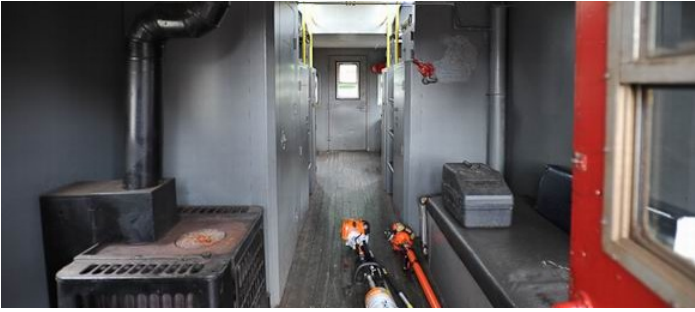
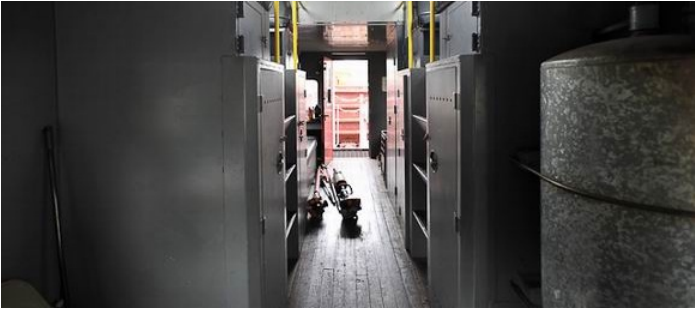














TRAIN YARD - 3 MILES AWAY - WHERE OLD TRAINS KEPT















