

12,000 SQ FT STUDIO- VIEW FULL DETAILS BELOW

 LOCATION

Brooklyn, NY 11231

 TAGS

City View, Distressed Patina, Elevator, Empty, Exposed Beam, Kitchen, Modern Contemporary, Raw Industrial, White Brick Wall, White Spaces, Wood Floor

 SPECS

Studio 1 - 12,000 sq ft
Studio 2 - 8,000 sq ft
15' ceiling height

 POWER

100 amp 3-phase Cam-Lok Tie In

 CATEGORIES

* In the Zone, Event Space, Loft, Studio, Warehouse / Factory / Industrial

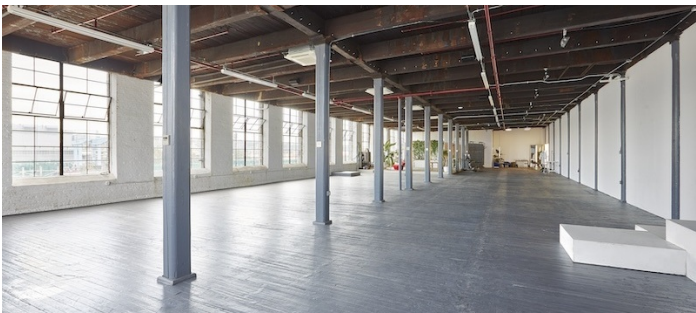
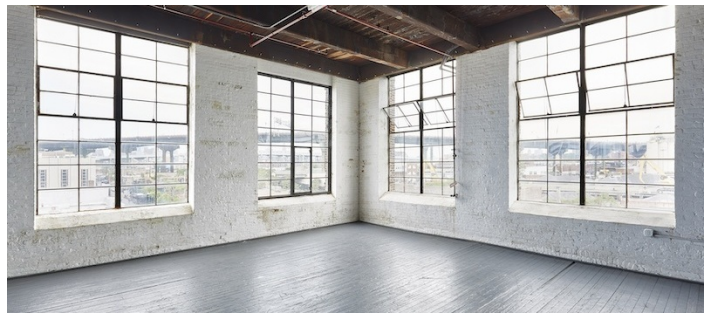
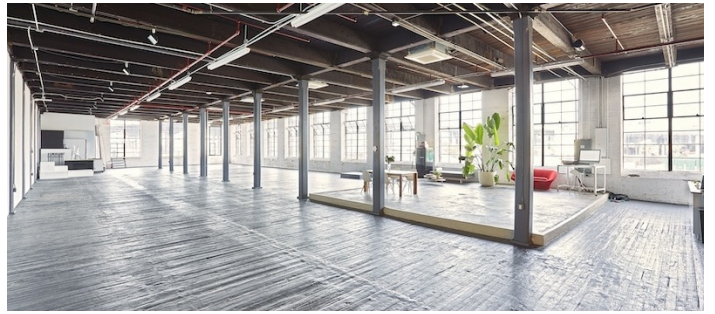
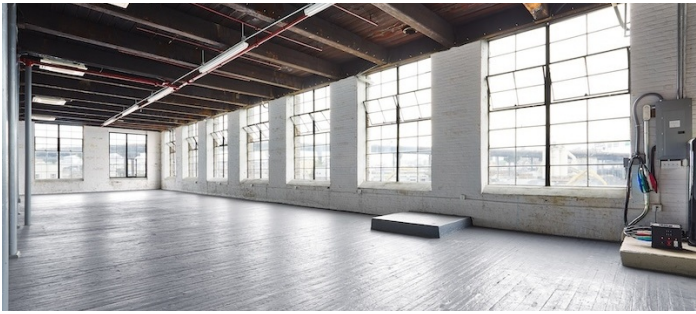
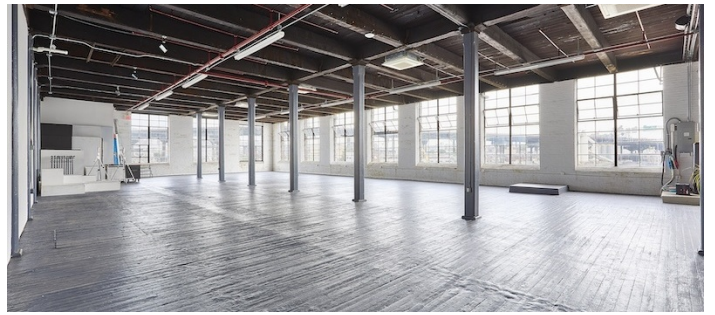
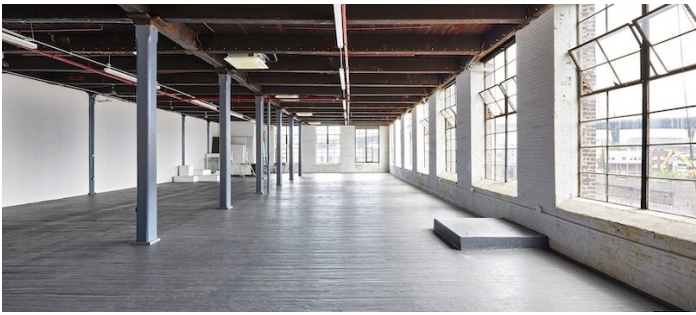
Notes

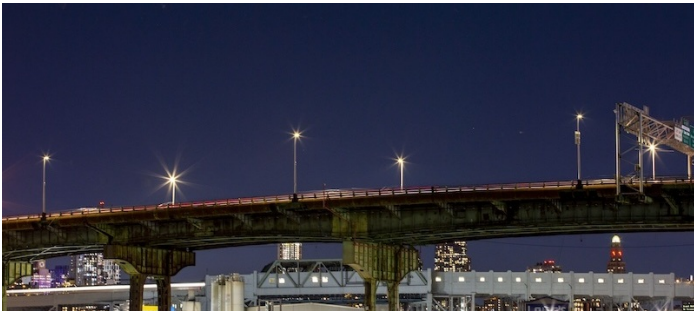
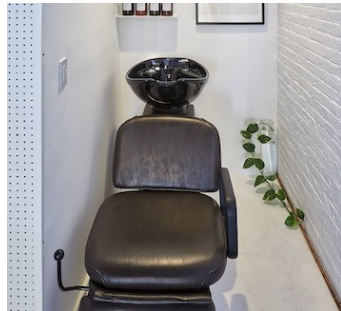
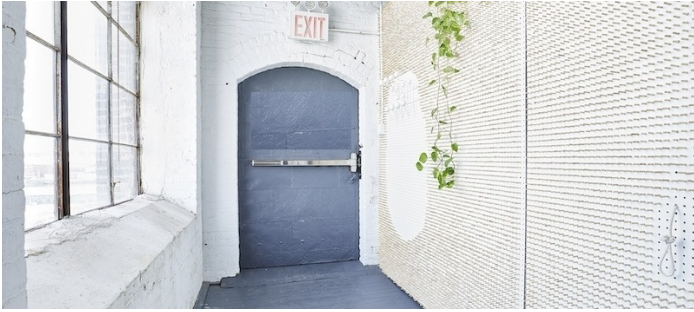
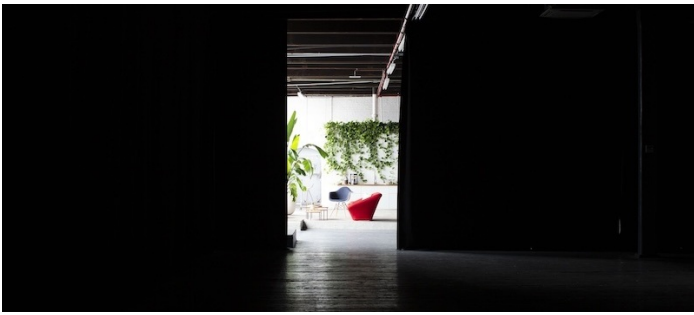
Two raw lofts on 3rd floor of an 1890's warehouse offering combined studio space over 20,000 square feet. 1st studio is 12,000 sq ft and adjacent 2nd studio is 8,000 sq ft; they can be rented individually or combined. Studios feature full-length windows, high ceilings, unobstructed views and an abundance of daylight, while also offering versatile blackout options.

Productions requiring the use of liquid will enjoy the wet studio, with a polished cement platform, drain, and temperature-controlled plumbing. Other amenities include a freight elevator that opens directly into each space, private entrance, client lounge/green room, a full studio sound system and private bathrooms with luxury amenities.

Other features include parking, a loading dock, and a freight elevator that opens into the space for easy load-in. Loading dock gates 10.5' x 8' (width x height). Loading dock unloading area is 12.5' W x 14' H x 37' L. Freight elevator 52'' W x 83'' H x 10.5' L.

Photo/film equipment rental is available on site including wardrobe steamer, rolling racks, hangers, dollies, ladders, scaffolding, v-flats, gaffer tape and extension cords.





8,000 SQ FT STUDIO

