

9039

# Pelham Bay Park, The Bronx

## LOCATION

Bronx, NY 10464

## CATEGORIES

\* In the Zone, Event Space, House, Library / Museum, Mansion

## DISTANCE FROM NYC

20 miles

## TAGS

Backyard Lawn, Bedroom, Carpet, Classic Grand, Colonial Federal, Colorful, Fireplace, Garden, Living Room, Staircase, Staircase Ext, Sun Room, Traditional

## Notes

Film friendly, public space, this is a museum

Fountain, pond, arched windows, plants, chandeliers, crown molding, statues, tall windows, carriage house, gardens

### **Restrictions:**

Open to the Public Wed, Sat & Sun.

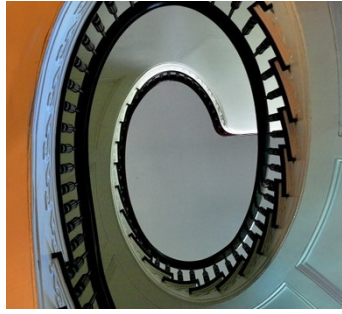
Scouting is highly recommended

Bathrooms are very old and can only be used for very few people. Motor-home is recommended.

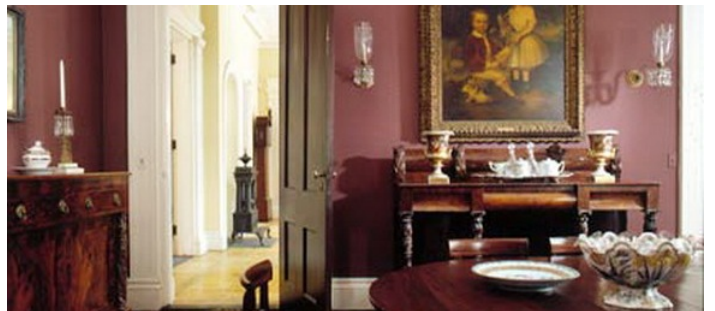
Most pieces of furniture may not be used to sit on, for display only, some are and staff member will advise. They have tables and chairs to be used for the crew in the area of set up (the Orangery is best)

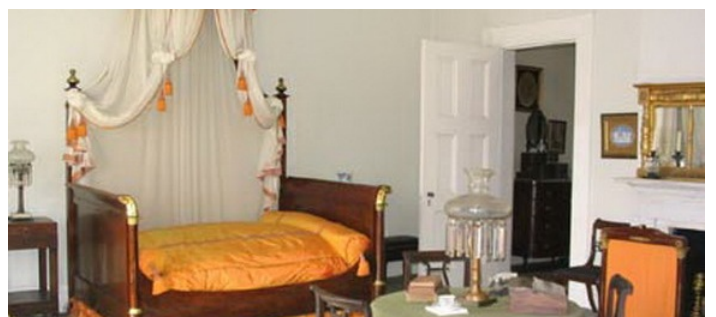












CARRIAGE HOUSE AND ADDL GARDEN SHOTS





