



9152

Rye, Westchester County

 LOCATION
Rye, NY 10580

 CATEGORIES
Carriage House, House, Mansion

 DISTANCE FROM NYC
34 miles

 TAGS
Backyard Lawn, Colonial Federal, Colorful, Distressed Patina, Empty, Exposed Beam, Fireplace, Living Room, Pool Outdoor, Porch, Staircase, Stone Wall, Tennis Court, Traditional, Wood Floor, Woods

Notes

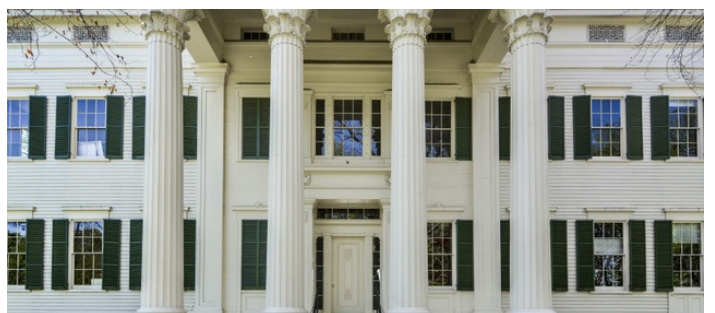
Film friendly

This Rye NY historic location has many buildings and outdoor areas, the 1907 Zebra House, the Ice House, 1917 Indoor Tennis House, and an 18th-century farmhouse.

Restrictions:

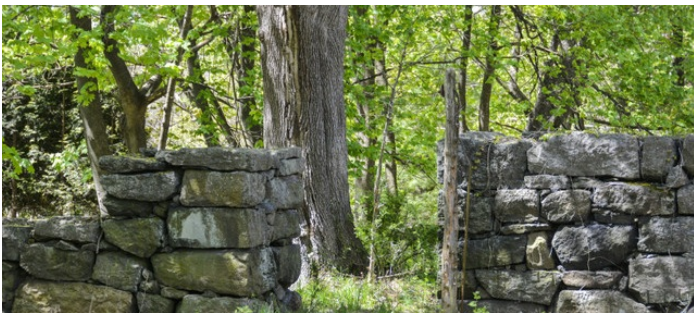
All floors must be protected, booties must be worn over shoes

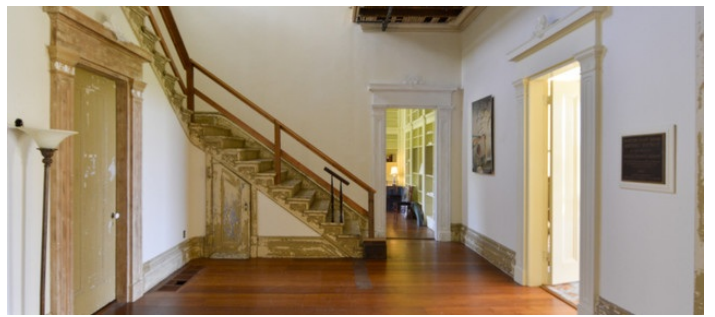
Areas of use determined in advance



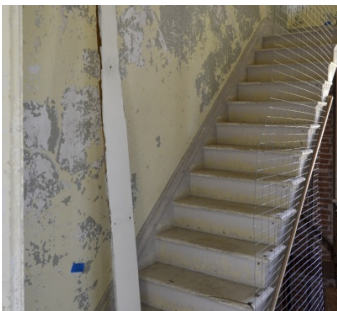
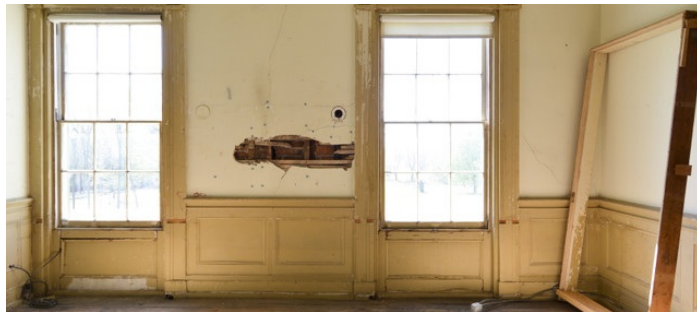




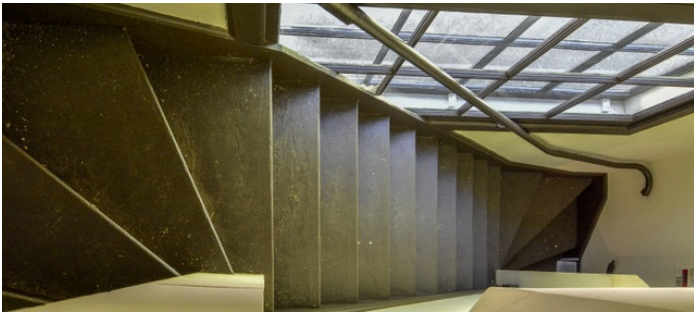


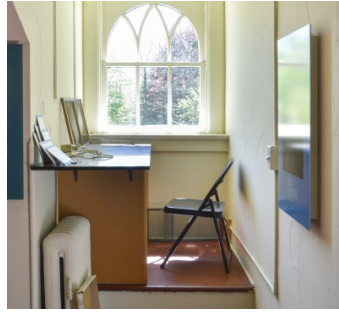












TENNIS COURT

