

2005

Lower East Side, Manhattan

LOCATION

New York, NY 10003

SPECS

10,000 sq ft

TAGS

Bohemian, City View, Colorful, Deck, Distressed Patina, * In the Zone, Apartment, Artist Studio / Gallery, Loft, Eclectic Quirky, Exposed Beam, Exposed Brick, Garden, Kitchen, Living Room, Modern Contemporary, Raw Industrial, Skylight, Stained Glass, Terrace Patio, White Brick Wall, Wood Floor

CATEGORIES

Notes

Film Friendly, Expensive.

All ground floor with rooftop garden, 10,000 sq feet, many rooms throughout with courtyards in all directions, rates vary according to what part of the space will be used, paintings and sculptures are not to be touched, moved or photographed unless specific arrangements are made for their use (all to be discussed prior to shoot).

Plenty of room for production and holding.

The furniture pieces change occasionally but stay similar style.

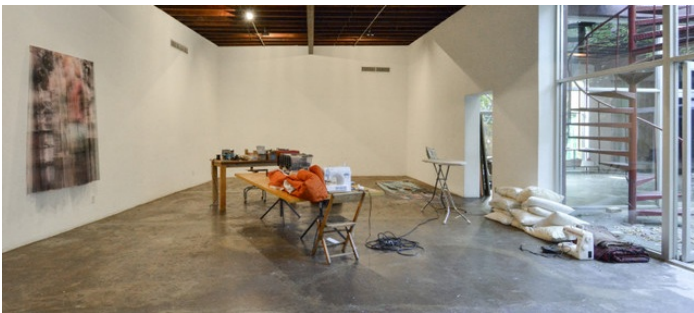
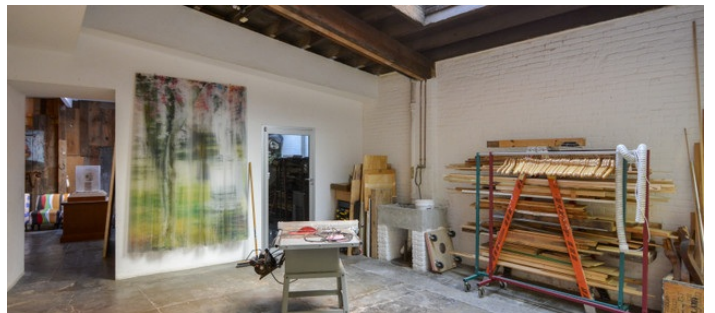
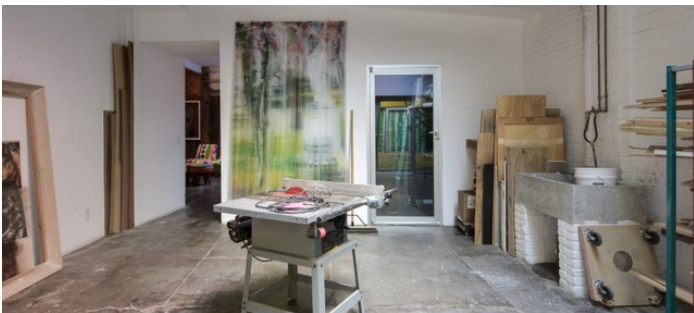
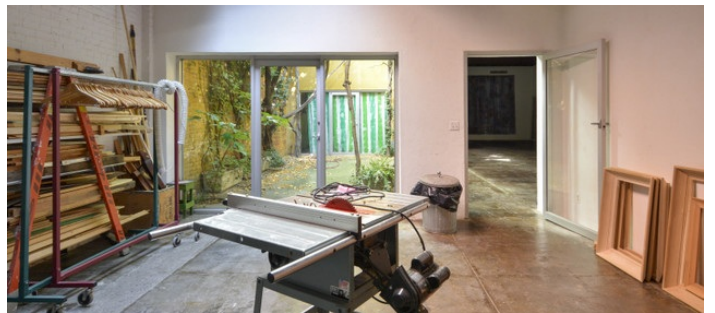
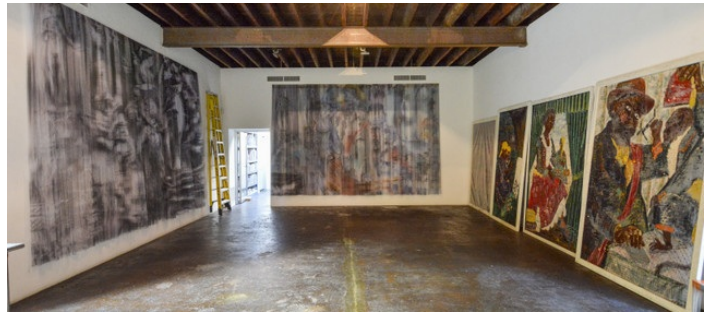
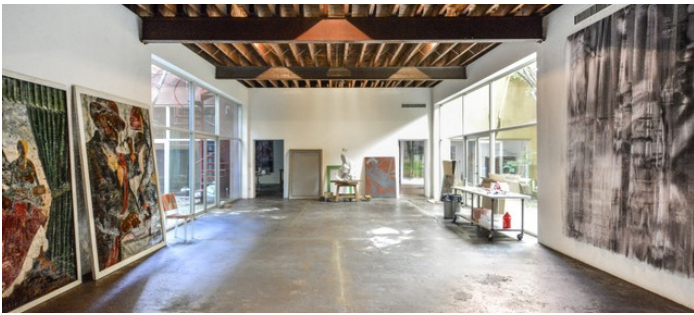
Scouting is mandatory.

Restrictions:

No plants may be moved.

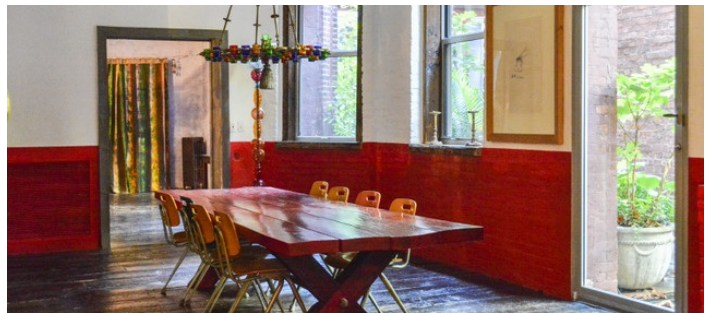
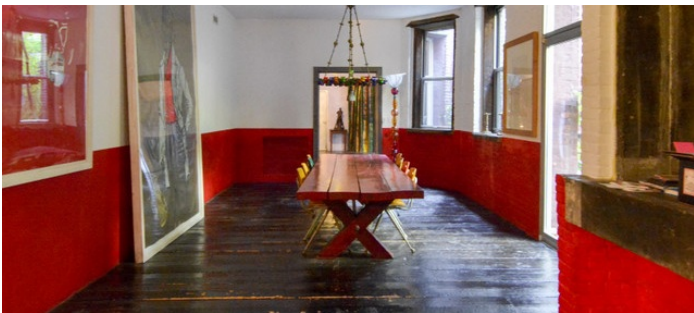
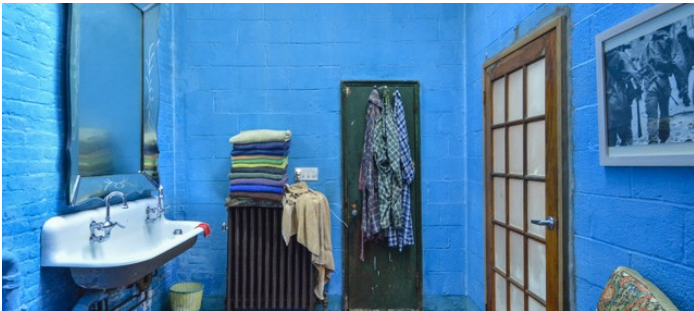
No smoking permitted.

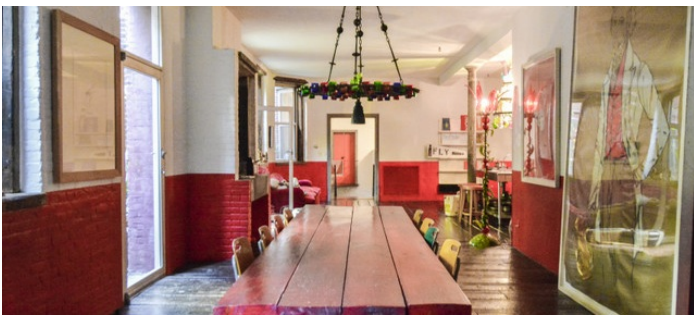
Roof deck off limits unless requested and approved in advance and additional fees paid.

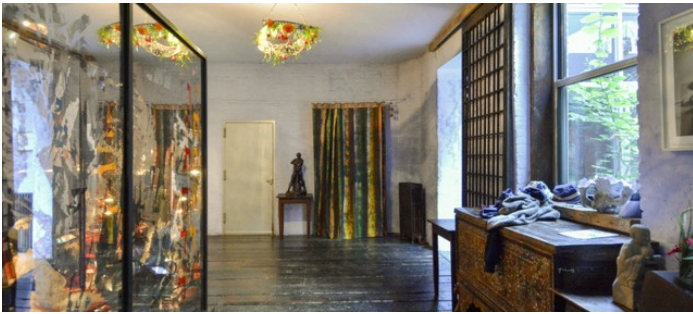
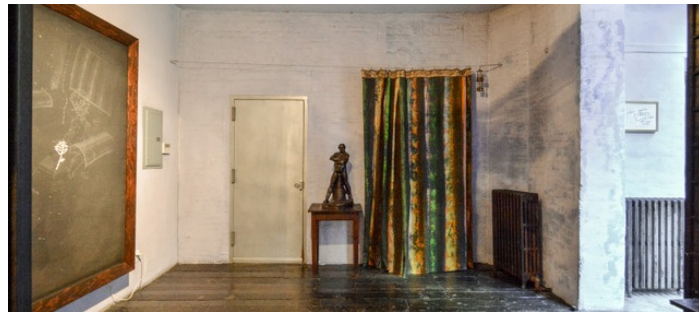












TERRACE

