

 LOCATION

Pound Ridge, NY 10576

 SPECS

4,500 sq ft

3 acres

 DISTANCE FROM NYC

47 miles

 CATEGORIES

House

 TAGS

Balcony, Bathroom, Bedroom, Deck, Eclectic Quirky, Exposed Beam, Fence, Fireplace, Floor to Ceiling Windows, Garage, Kitchen, Laundry Room, Living Room, Modern Contemporary, Piano, Pool Outdoor, Skylight, Staircase, Stone Wall, Terrace Patio, White Spaces, Wood Floor, Woods

Notes

Dramatic landmark country contemporary property with over 100 windows, cathedral open plan living, high ceilings, skylights and walls of windows. Over 4500 sf of sun-filled living space.

Atrium entrance hall. Stunning living room with beamed ceiling, fireplace and wood floors throughout. Open dining room sprawls to sleek "Jetson" kitchen.

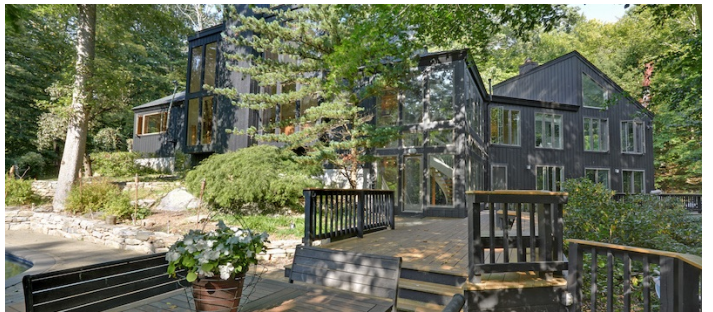
Blazing white-washed double height master suite with giant picture windows into the woods and spa bath ensuite. Two bedrooms with shared bathroom on gallery floor, fresh green guest room/library with ensuite off main floor.

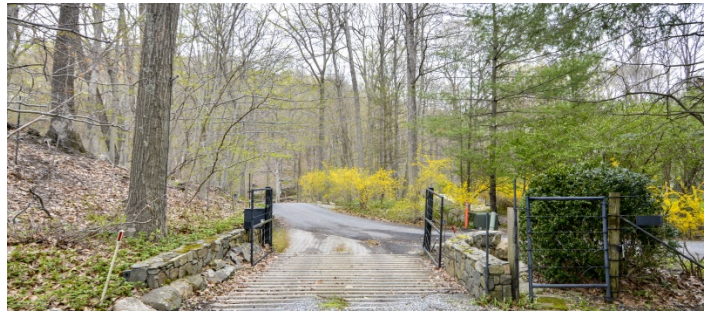
All season wooden high ceiling study with wraparound windows overlooking property and river. Lower level two bedroom apartment opening out to deck and pool. Black painted music studio/den on ground floor, with shower and changing rooms.

Double garage, plenty of parking and over two private acres of wild flowers, woodland, trails and an organic vegetable garden below a heated pool on the vast wraparound wooden deck.

Restrictions:

Possible to paint or nail in walls as long as fixed/returned to original condition.

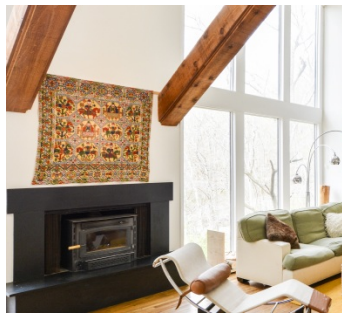








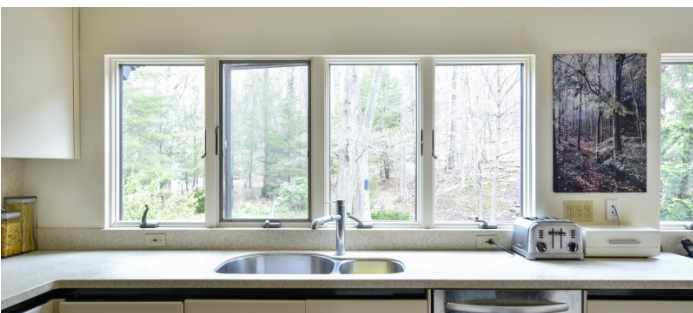
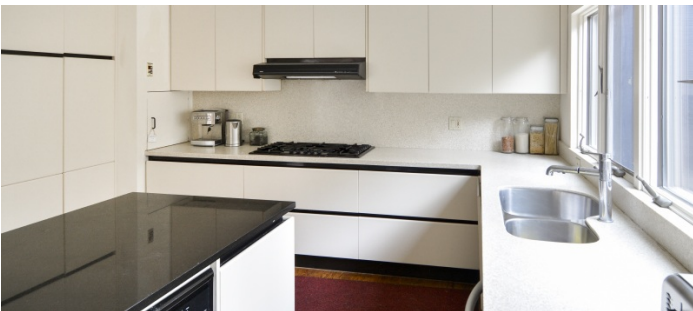
1ST FLOOR

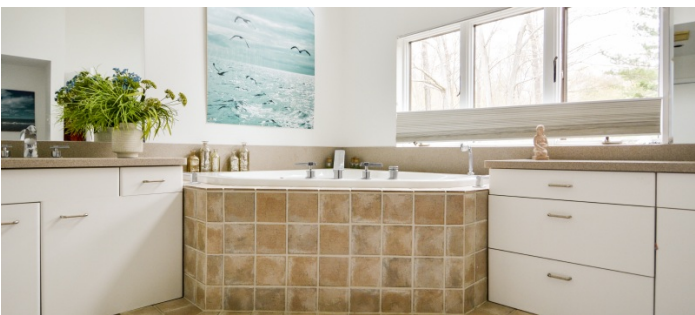


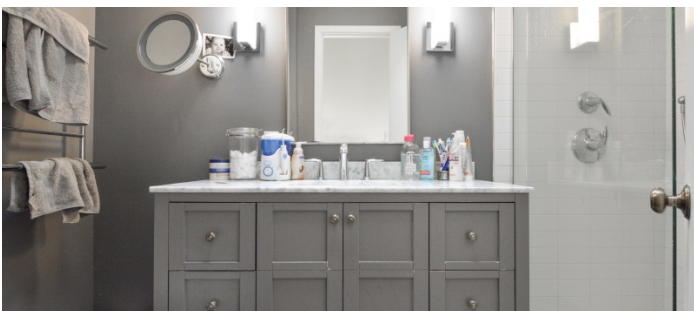


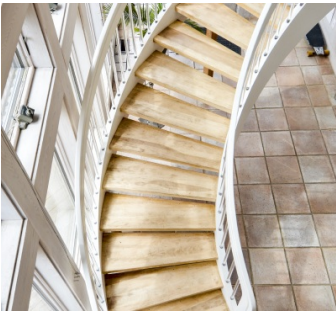


2ND FLOOR

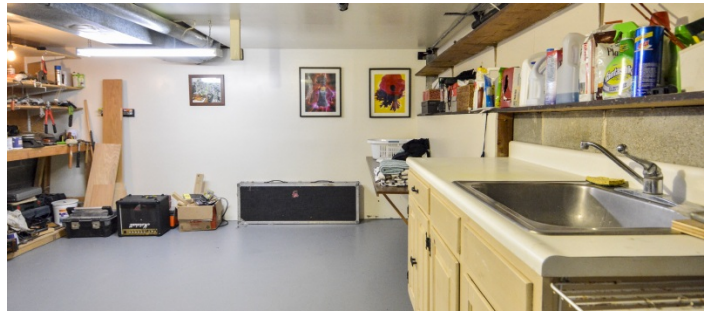








GROUND FLOOR



GROUND FLOOR APARTMENT

