

# 3-30113 Hopewell Junction, Upstate NY

## LOCATION

Hopewell Junction, NY 12533

## DISTANCE FROM NYC

66 miles

## TAGS

Backyard Lawn, Bathroom, Bedroom, Colonial Federal, Colorful, Distressed Patina, Eclectic Quirky, Exposed Beam, Fireplace, Garage, Historic, Kitchen, Living Room, Staircase, Traditional, Wallpaper, Wood Floor

## SPECS

4,640 sq ft

3.5 acres

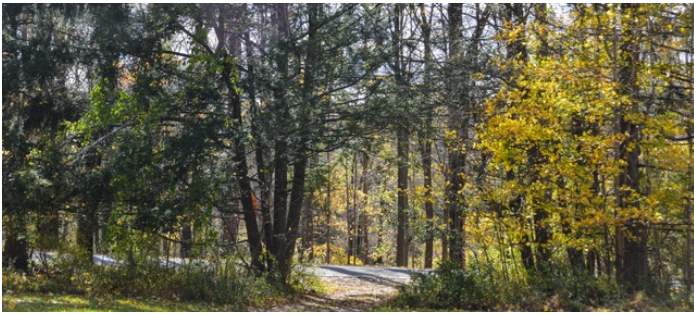
## CATEGORIES

House

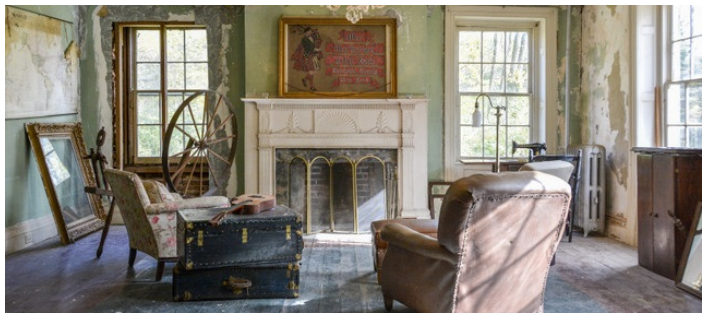
## Notes

With portions dating pre Revolutionary War and others just after, with little to no modern updates, this home is a rare find among historic homes. Seated in Dutchess county, upon 3.5 acres, this Federal period estate is a true time capsule of American history. Boasting original woodwork with beautiful architectural features, high ceilings, exposed beams, wide board floors, Dutch doors, original Palladian windows and five fireplaces, the home was the showplace of a 250 acre farm homesteaded by Garret Storm and later his son John.



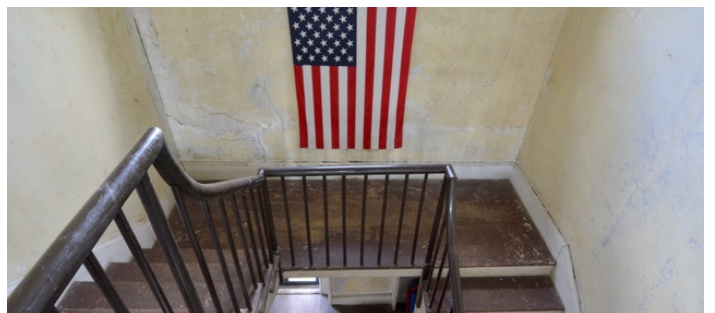


1ST FLOOR











2ND FLOOR

