

 LOCATION

New York, NY 10038

 CATEGORIES

* In the Zone, Apartment, Lobby

 TAGS

60's style, Architectural, Balcony, Bedroom, City View, Colorful, Concrete, Garage, Garden, Kitchen, Living Room, Mid-Century, Modern Contemporary, Raw Industrial, Staircase Ext, Terrace Patio

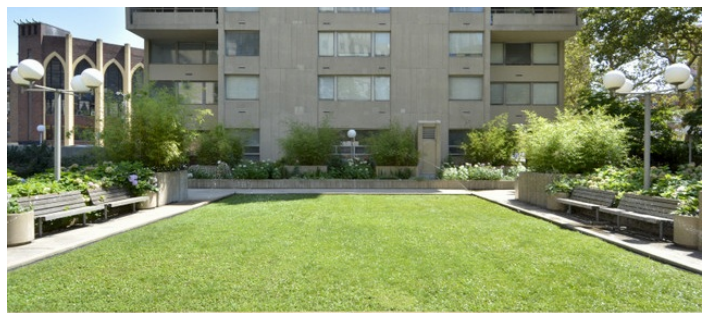
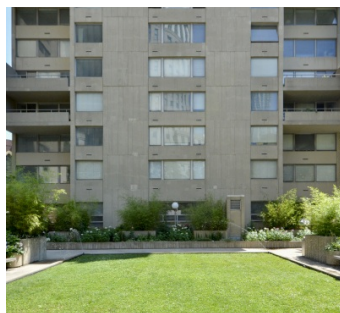
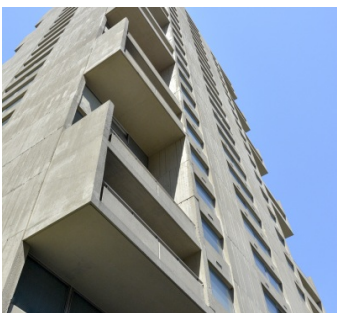
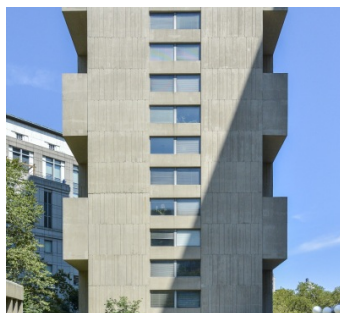
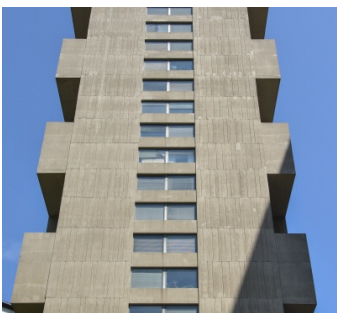
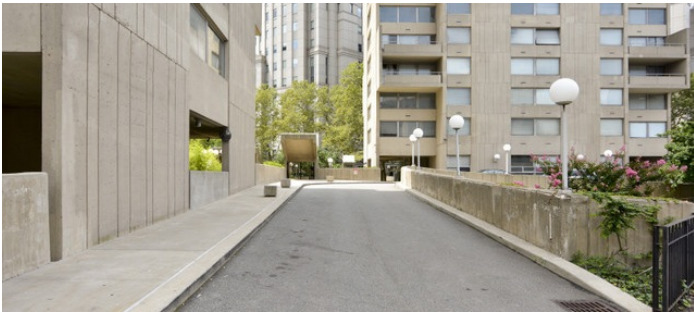
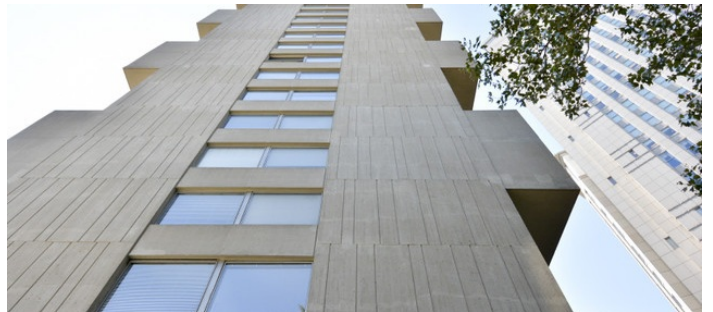
Notes

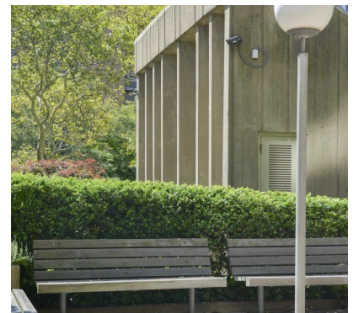
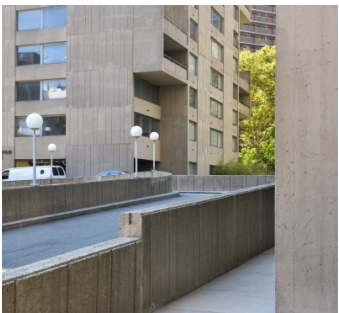
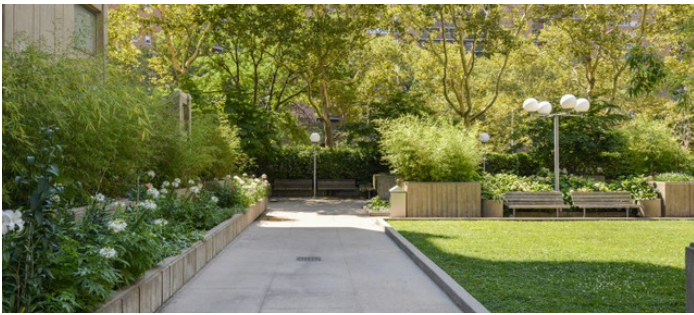
Brutalist Building and Towers with private gardens and parking. Designed by Kelly and Gruzen, this building was among the first exposed concrete residential towers in the city completed in 1965. The unique expansive windows were manufactured to a Swedish design that sandwiched Venetian blinds between double glazing.

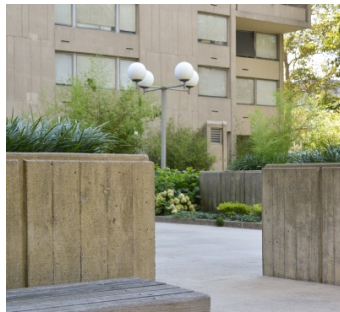
The inside of the apartment has all mid century furniture and art with an open balcony looking into the gardens and a large tree. The living room window over looks the private garden/ plaza.

Garage under building paid separately.

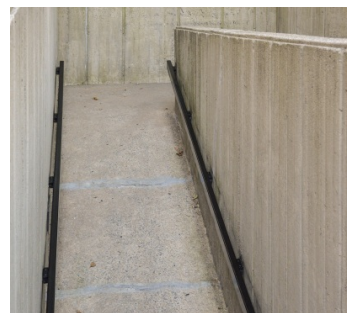
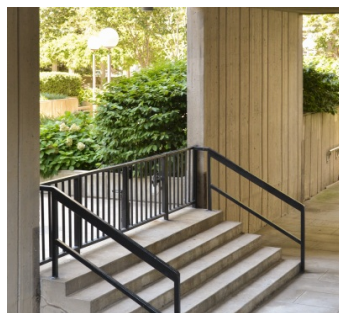
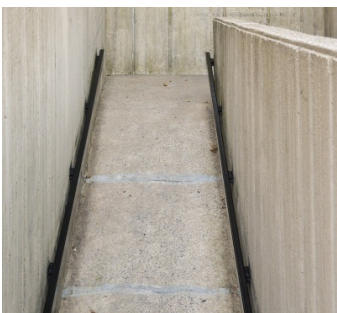
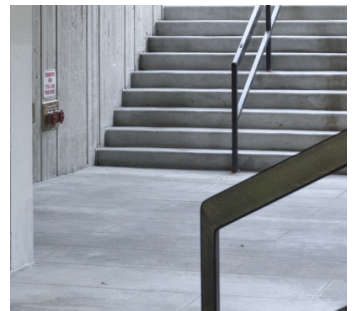
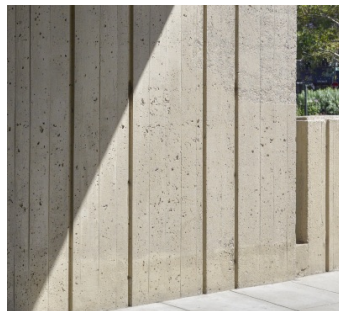
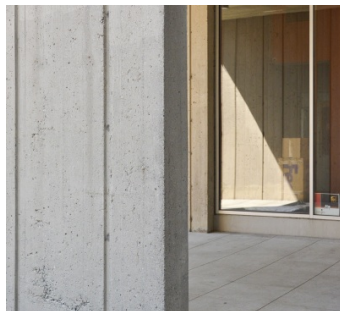
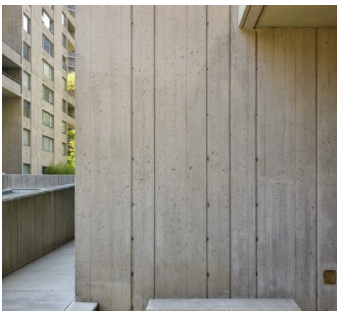
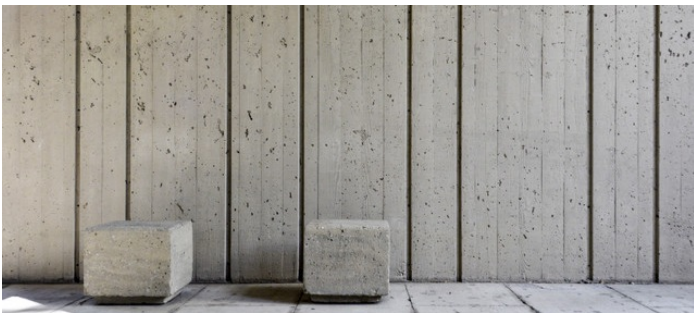
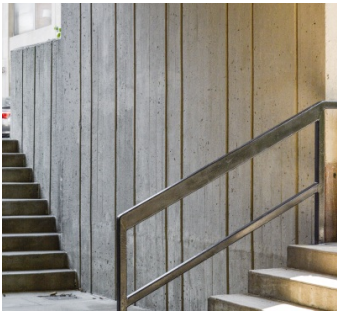
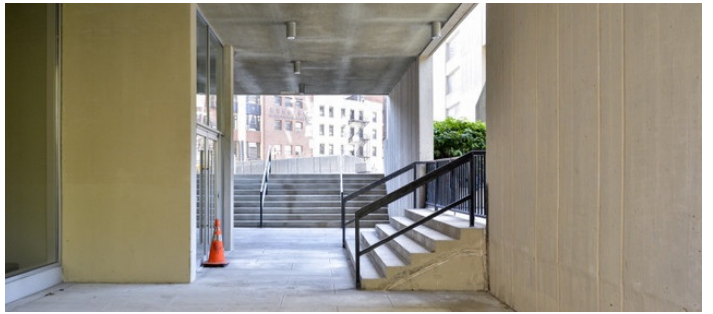
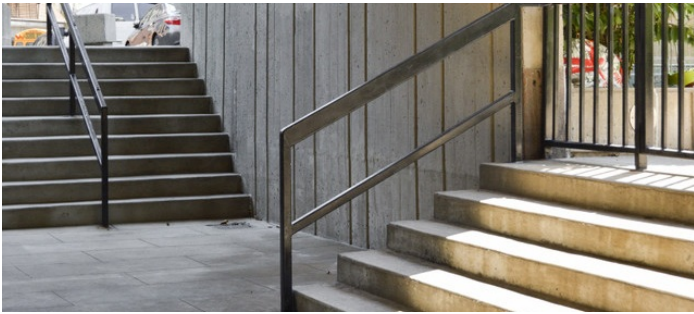
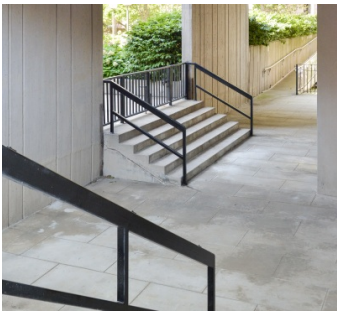
Conference Room available for staging/catering.

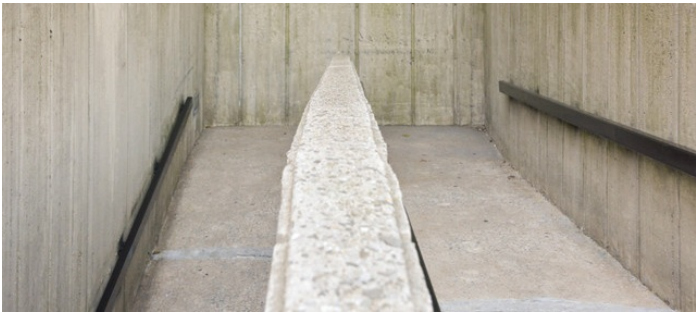
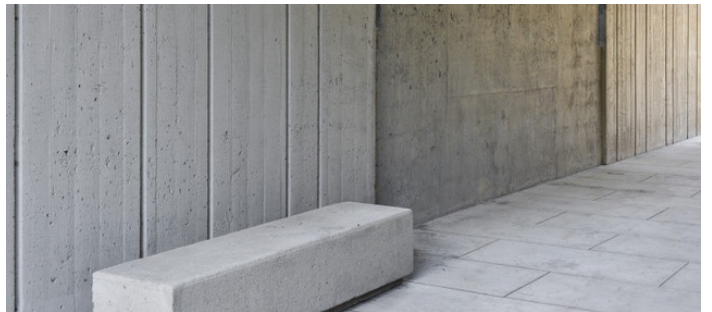


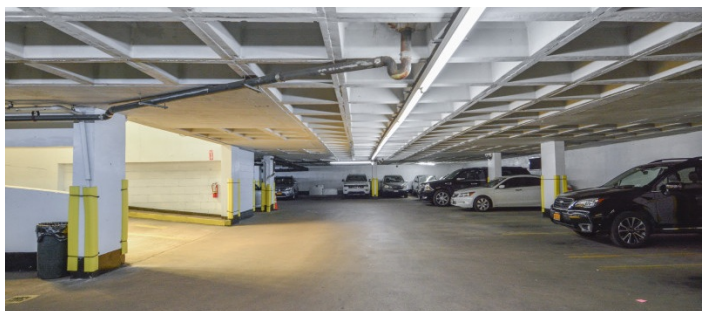
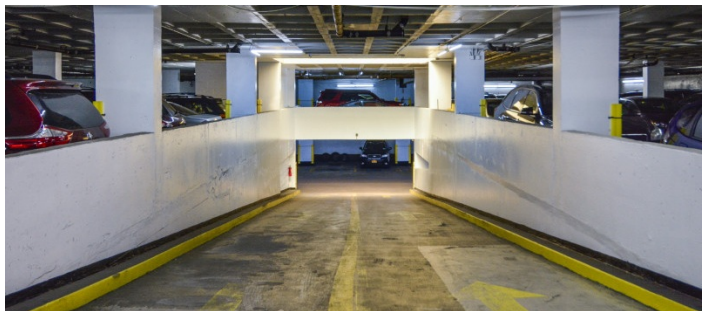
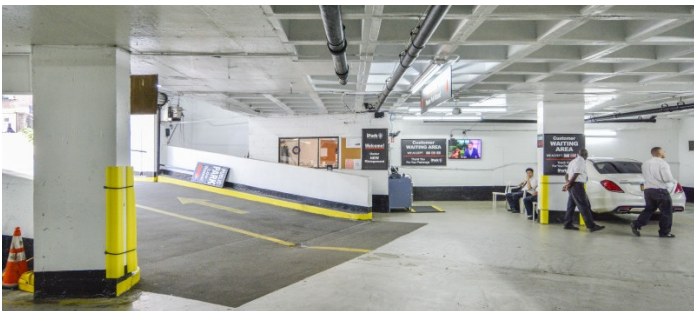
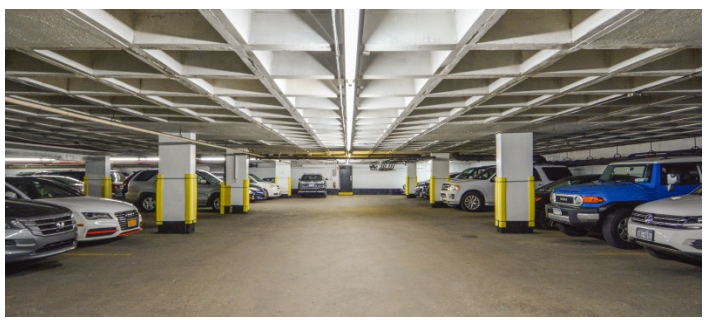
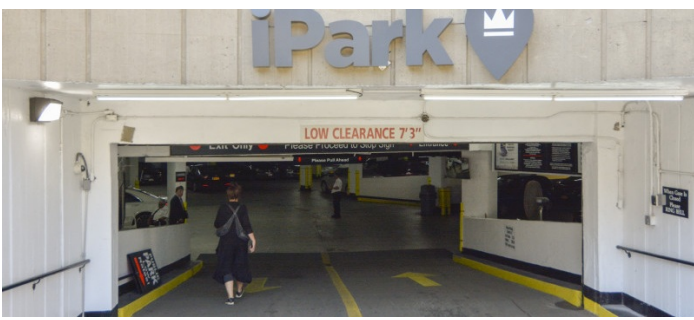


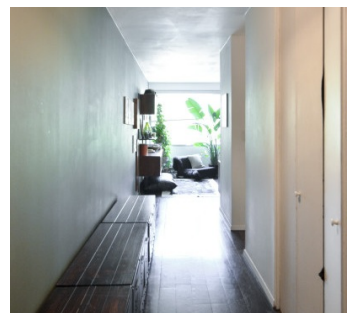


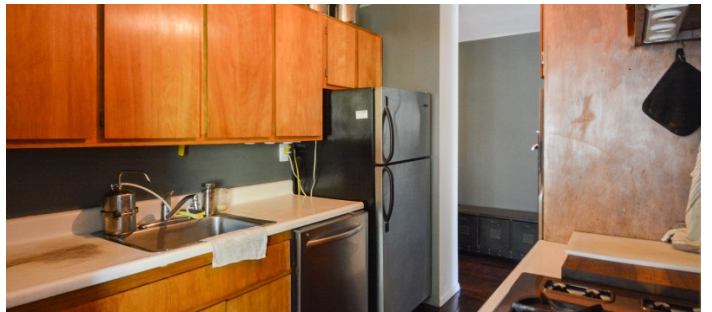
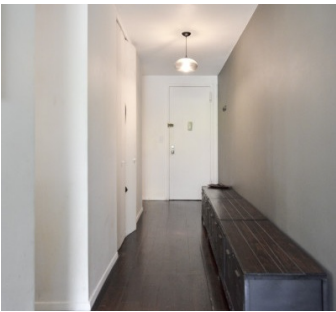


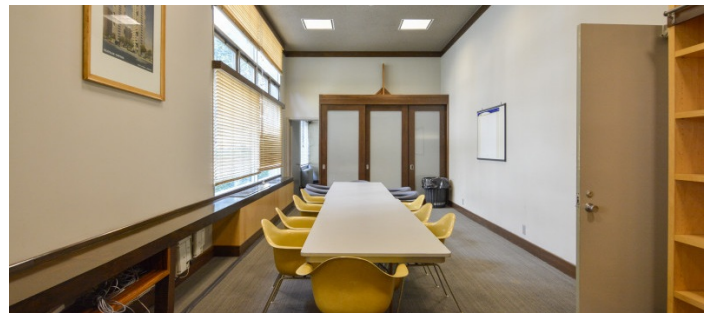
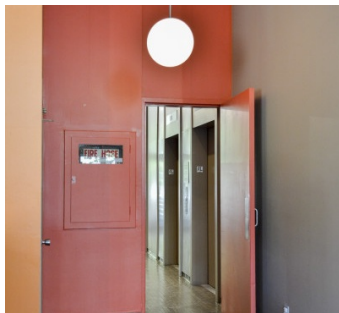
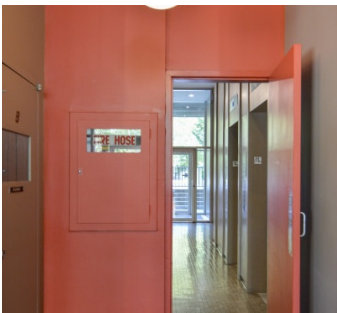
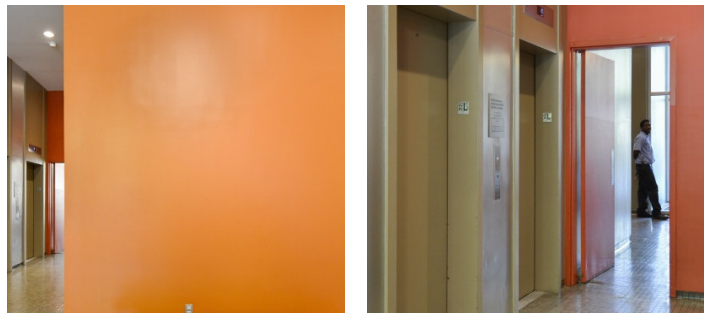
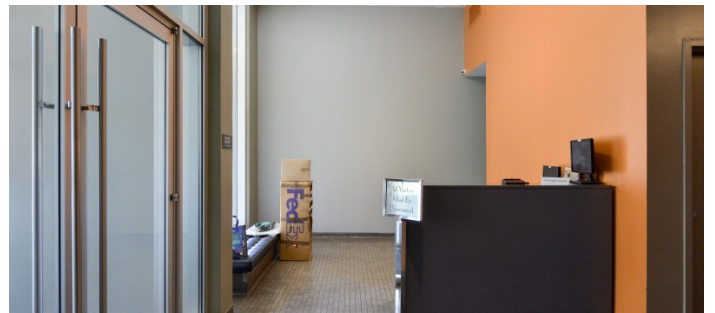
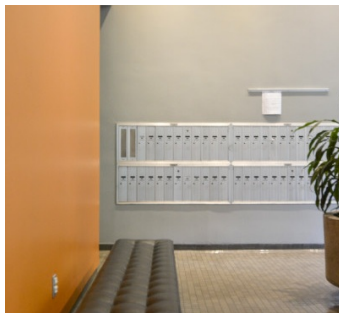
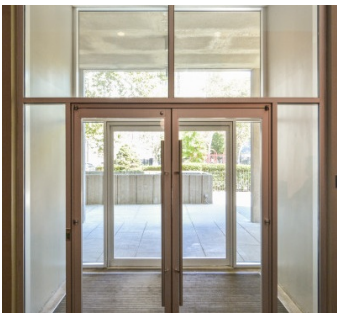
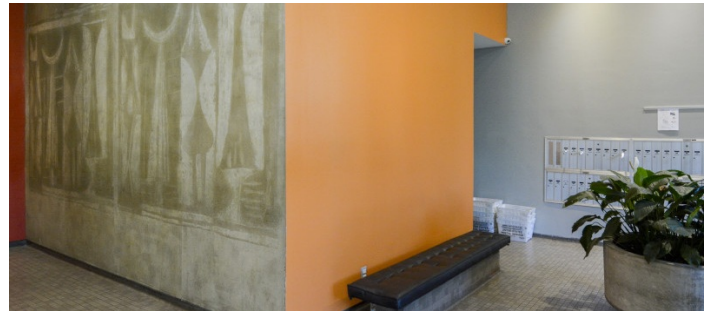
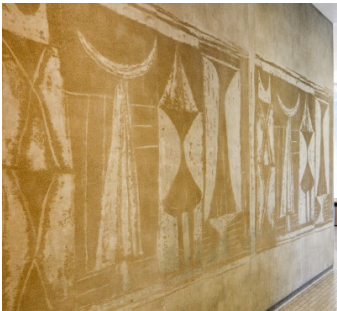
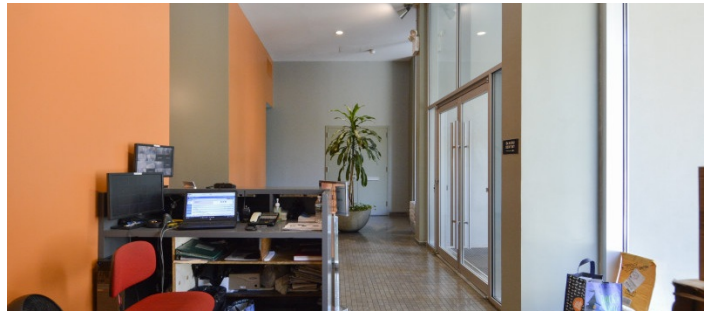
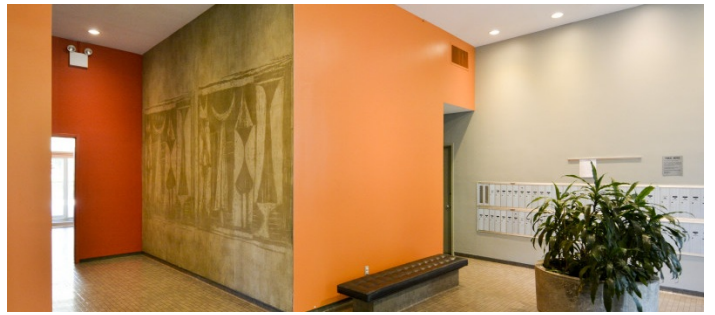


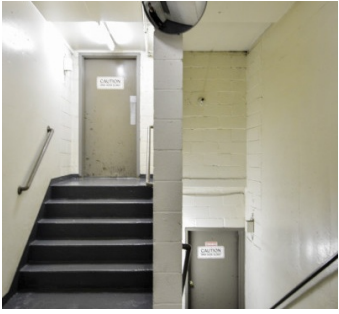
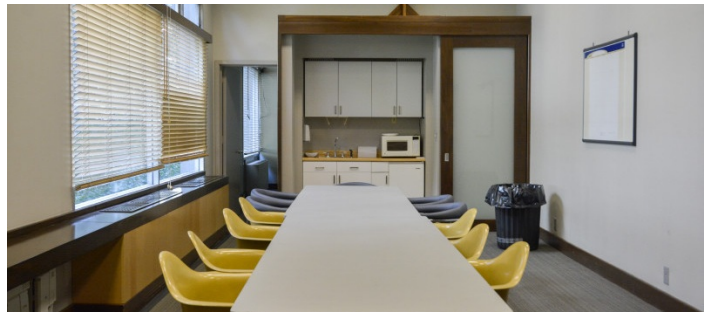
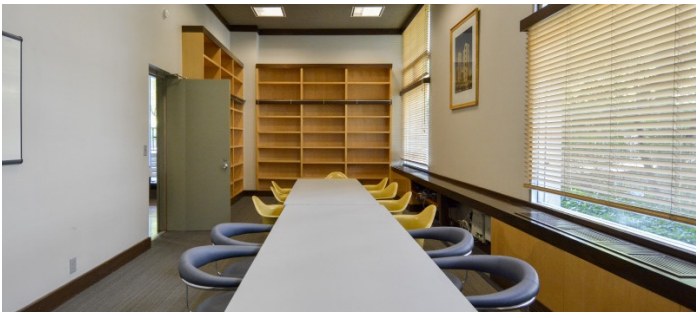












LAUNDRY ROOM

