

MAIN STUDIO (GROUND FLOOR) - 5650 SQ FT - VIEW FULL DETAILS BELOW

 LOCATION

Brooklyn, NY 11231

 SPECS

Main studio - 5650 sq ft

Support studio - 1850 sq ft

 TAGS

Bathroom, Distressed Patina, Eclectic Quirky, Elevator, Exposed Beam, Exposed Brick, Modern Contemporary, Raw Industrial, Staircase

 CATEGORIES

\* In the Zone, Artist Studio / Gallery, Event Space, Office, Studio, Warehouse / Factory / Industrial

## Notes

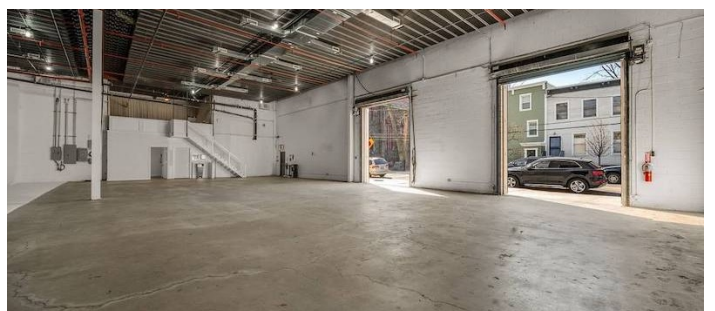
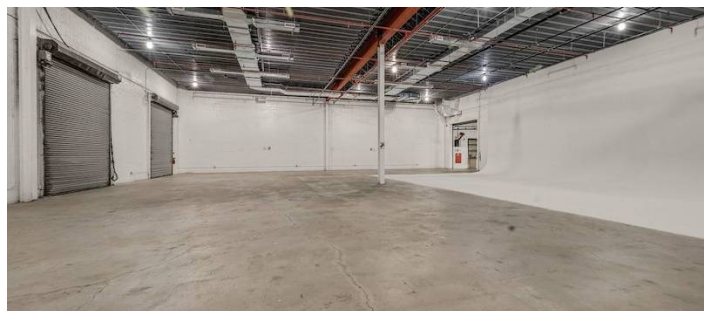
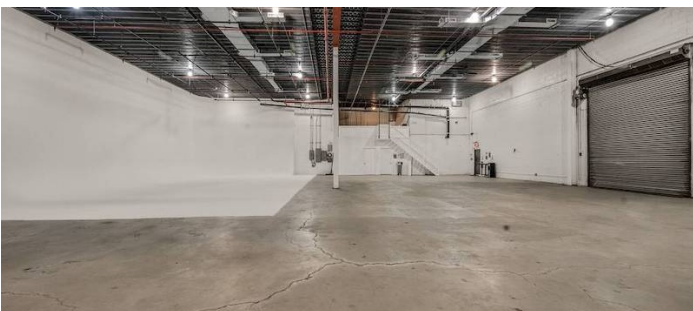
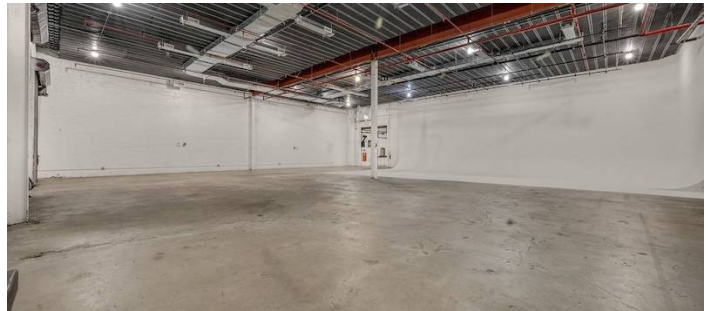
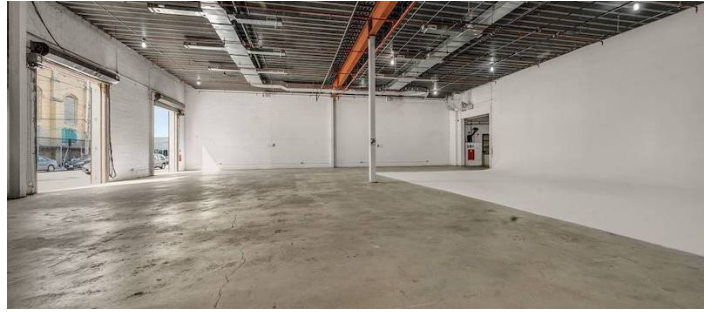
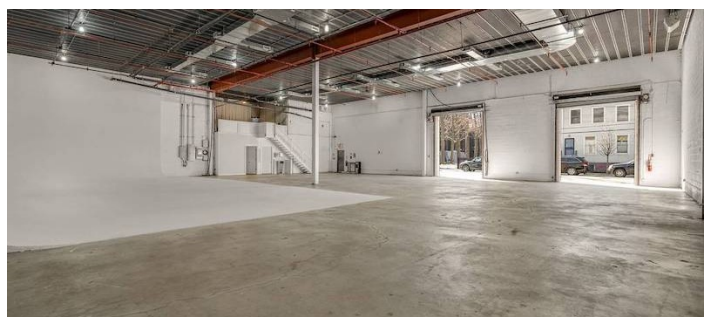
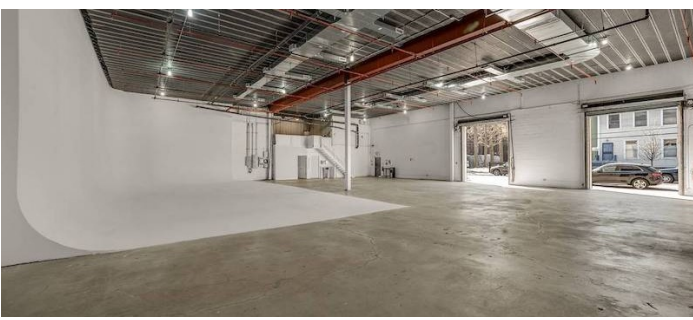
Studio boasting over 7,500 sq. ft. combined space, 20 ft. cyclorama, 20 ft. ceiling height and street level access making it a true shooting destination.

Level 2 compliant, features include:

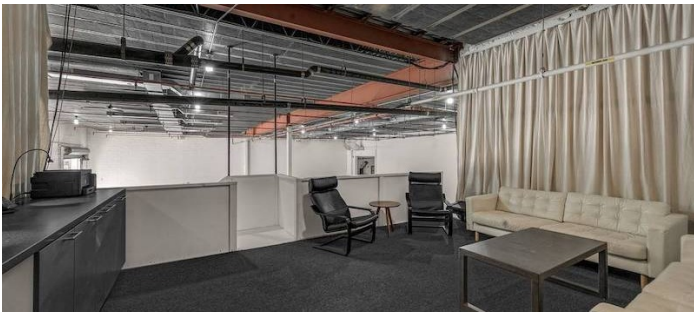
- permanent grid
- clear height of 16' under the grid
- sound proofed with a Noise Criteria (NC) of 30 or better
- sufficient heating and air conditioning for shooting without need for supplemental units
- built-in electric service for shooting without need for generators

Offers a one-stop-shop for all possible photo, film and video shoot, event or installation needs.

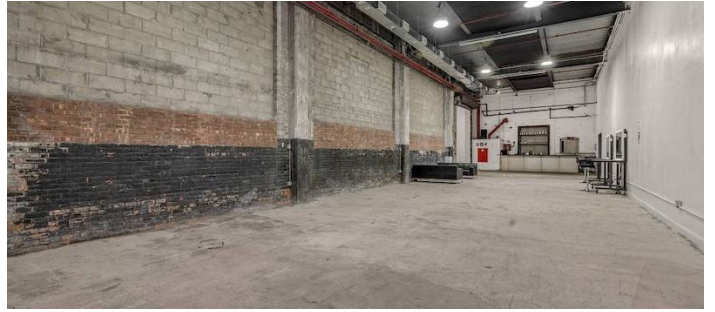
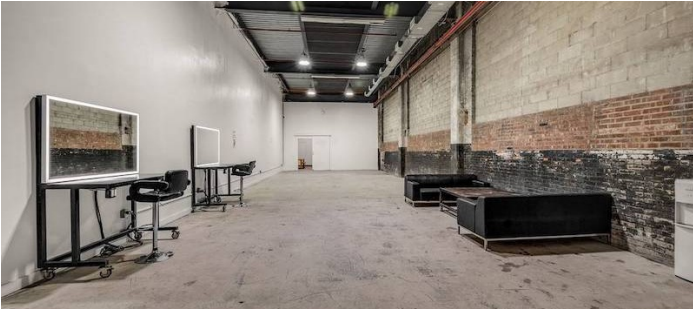
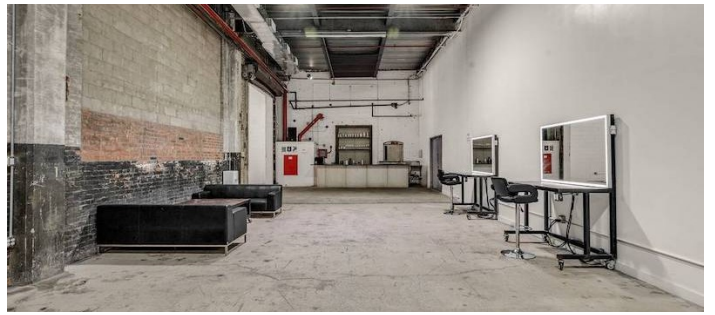
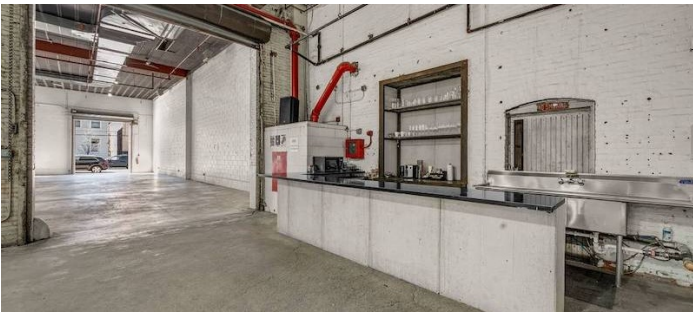
Offers on-site production support, grip, lighting and equipment rentals, along with a props and set fabrication studio.



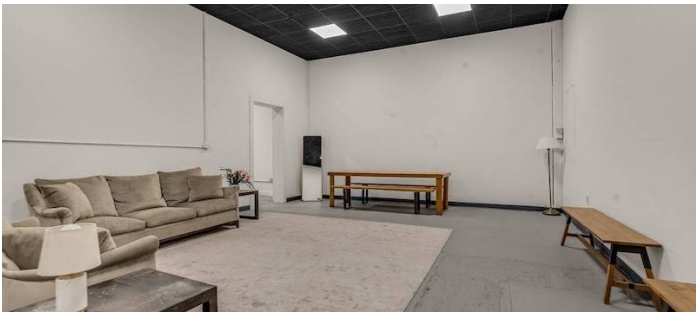
LOFT AREA



SUPPORT STUDIO (GROUND FLOOR) - 1850 SQ FT

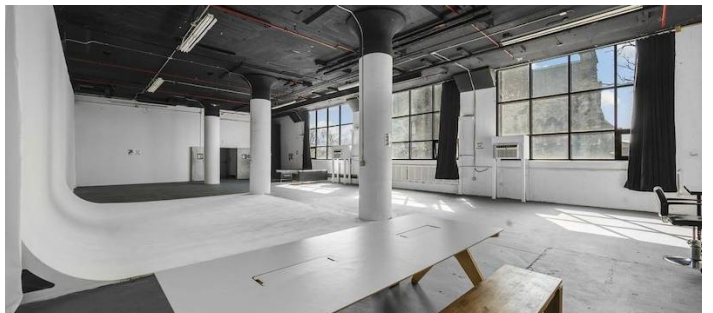
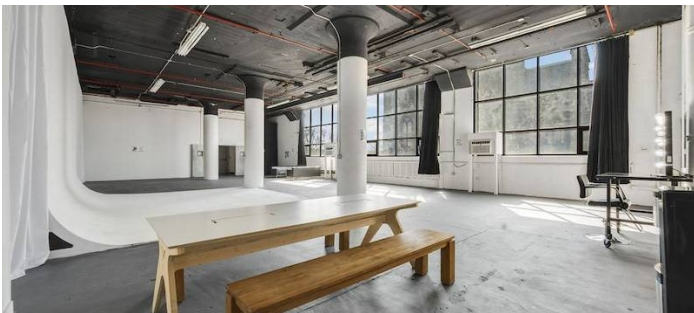
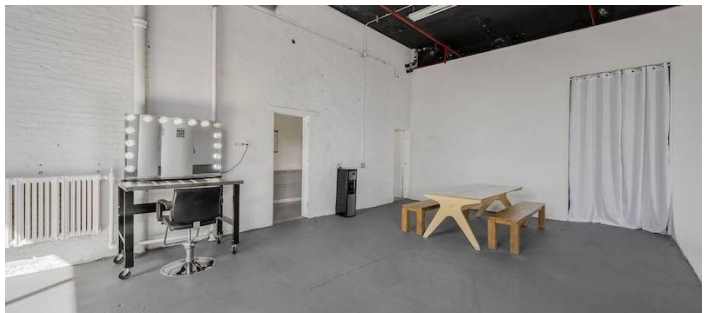
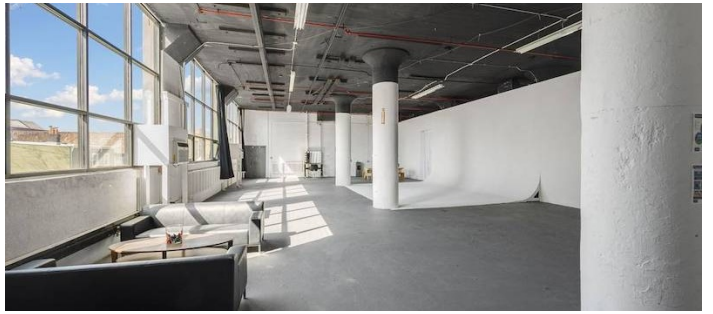
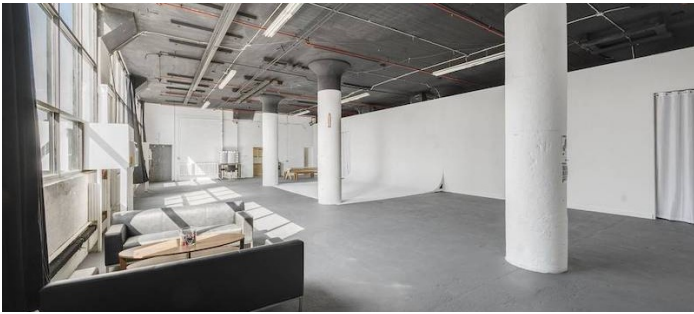
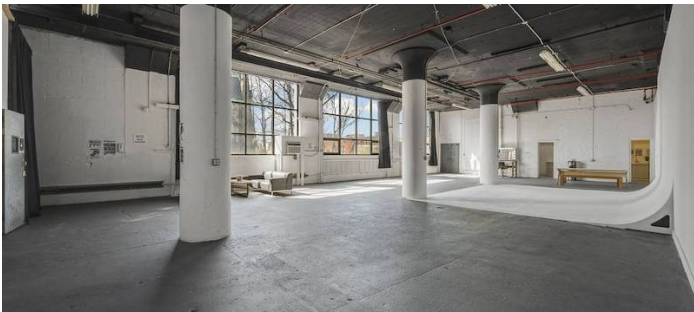


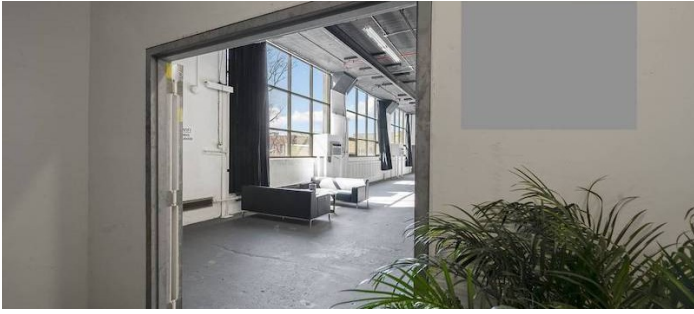
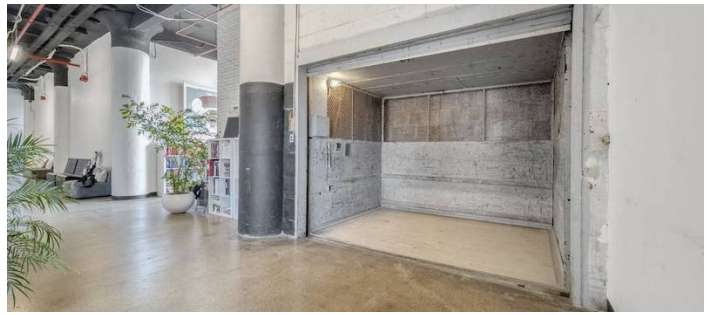
VIP ROOM (NEXT TO SUPPORT STUDIO)



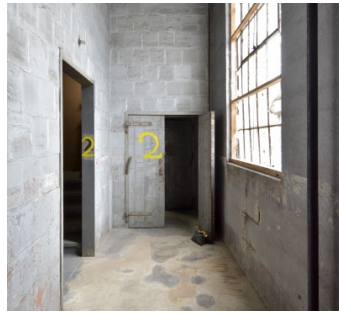
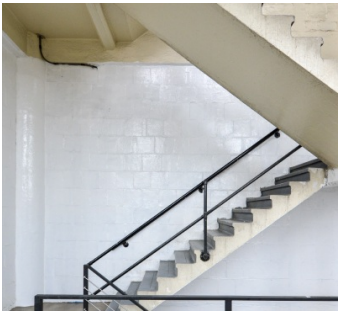
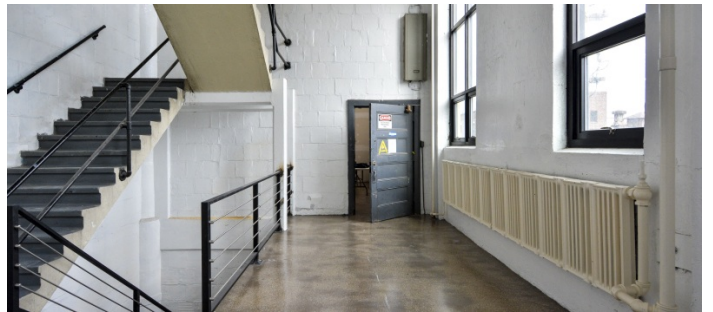
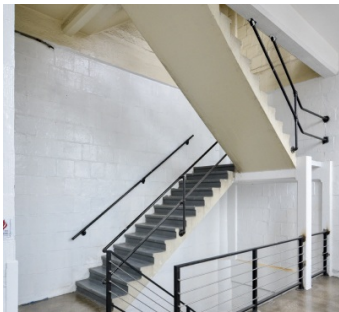
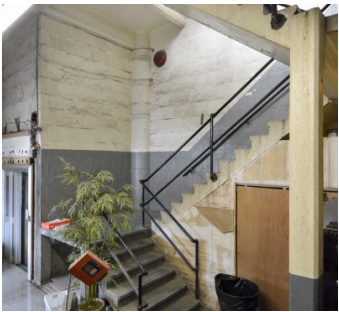




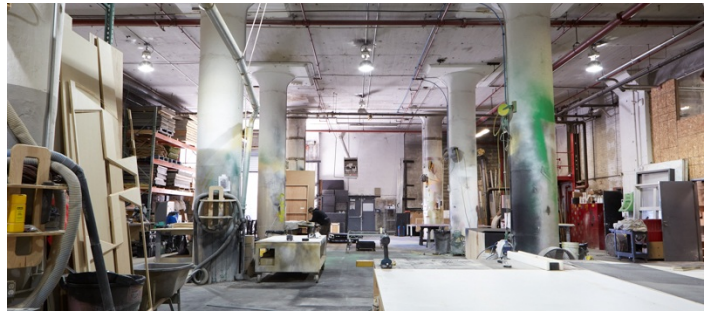
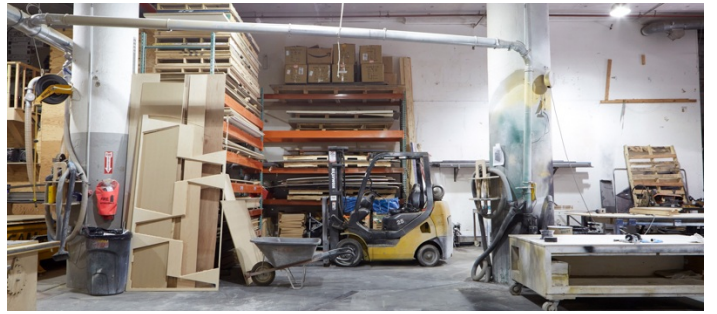
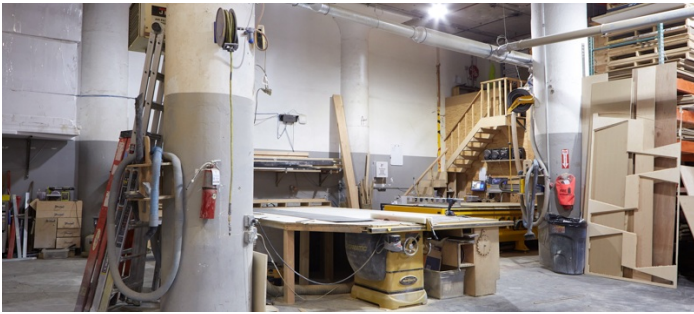
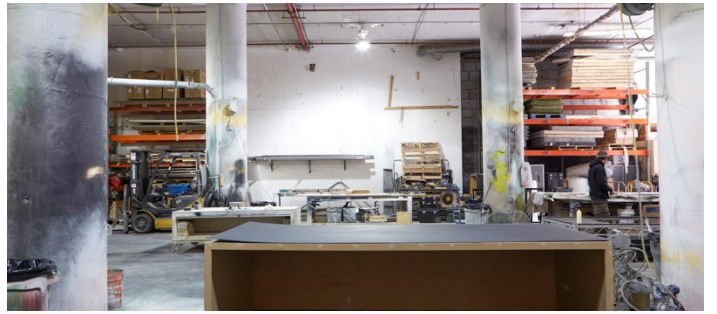
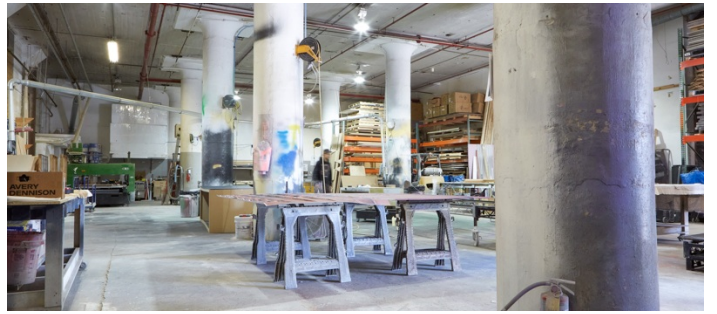
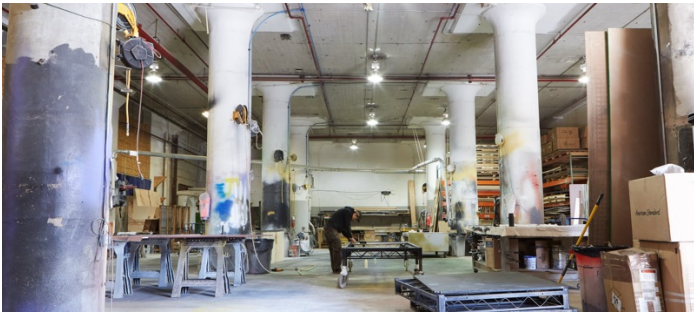
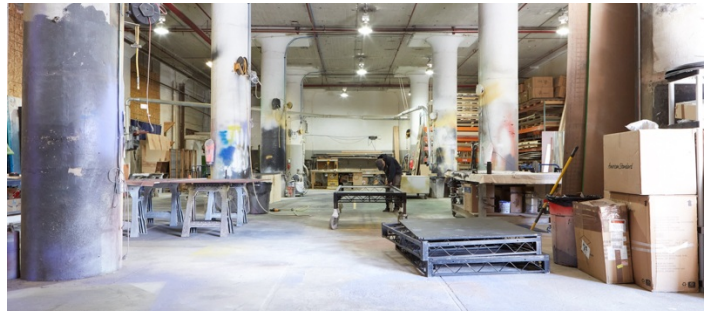
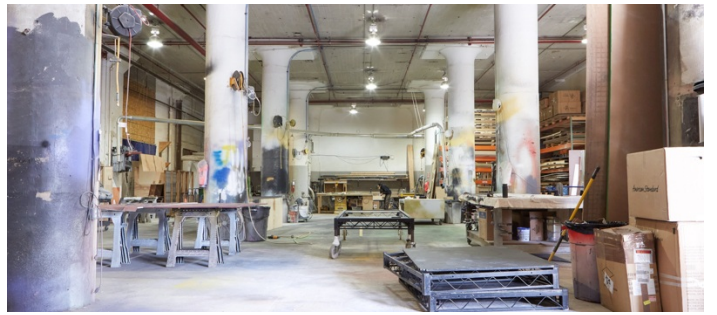
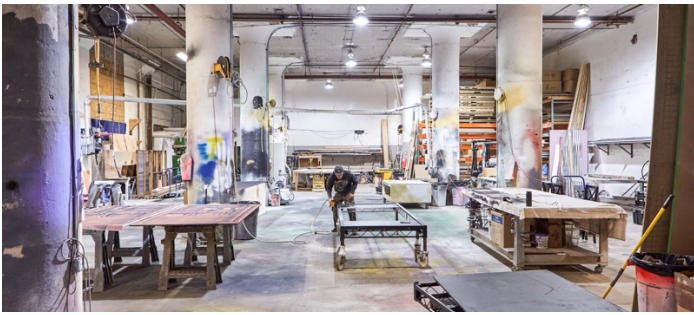


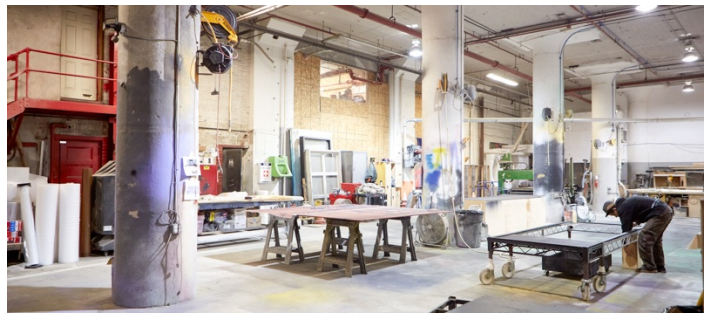
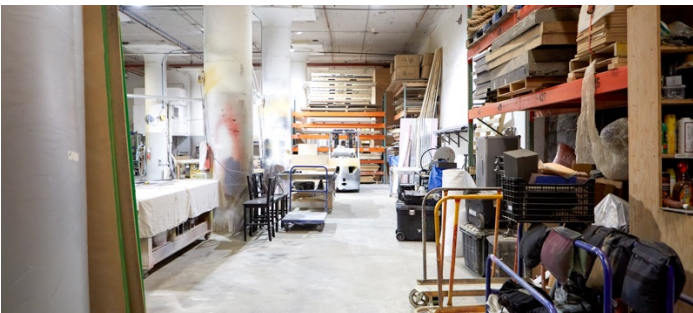






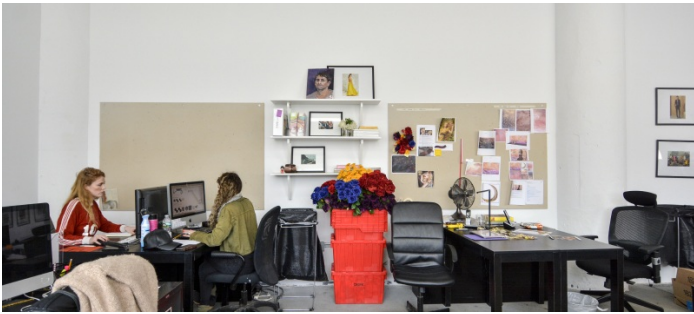
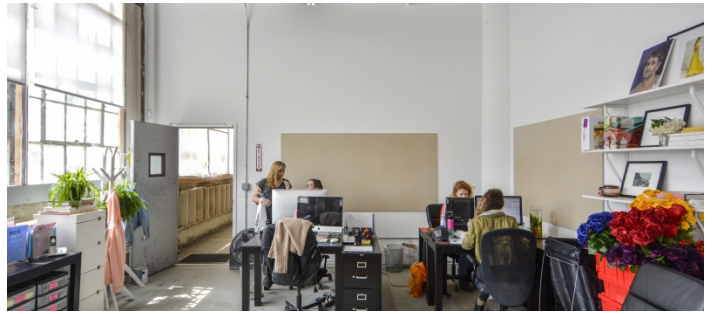
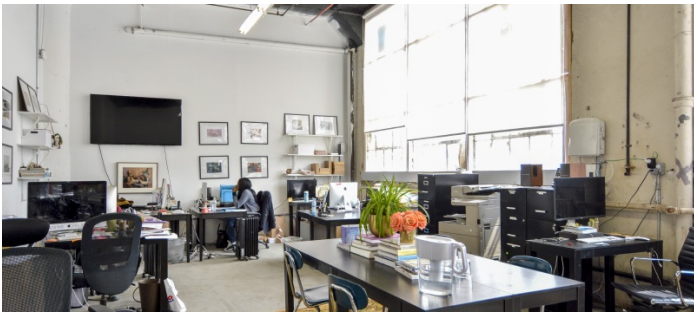
FABRICATION WORKSHOP (GROUND FLOOR)











BUILDING EXTERIOR (SOUNDPROOF DOORS)

