

 LOCATION

Brooklyn, NY 11231

 SPECS

2100 sq ft

700 sq ft x 3 floors

 TAGS

Bathroom, Bedroom, Fireplace, Garden, Kitchen, Living Room, Modern Contemporary, Scandinavian, Staircase, Staircase Ext, Stoop, Terrace Patio, White Brick Wall, White Spaces, Wood Floor

 POWER

200 amps

 CATEGORIES

* In the Zone, Loft, Townhouse

Notes

Three story early 20th century clapboard townhouse.

Garden level: 2 bedrooms (open floor with sliders in between rooms) hall and bath, double glass doors open out onto backyard.

Parlor level: Vestibule, hall, midcentury modern furnished living room opening into large vintage style kitchen/dining room, bath with clawfoot tub with stairs descending to yard.

Top level: Second kitchen, office, bath, large mostly empty living area spanning front of house. Six exposed brick fireplaces, 4 are working.

Large backyard with table, umbrella, season vegetable garden, partly blue-stone, partly planted (mostly roses). Bluestoned front yard with tree, and roses.

Clean, white, bright, light, beachy, country, vintage, minimalist, Scandinavian, airy, simple.

Restrictions:

Protect floors, no shoes inside except for models

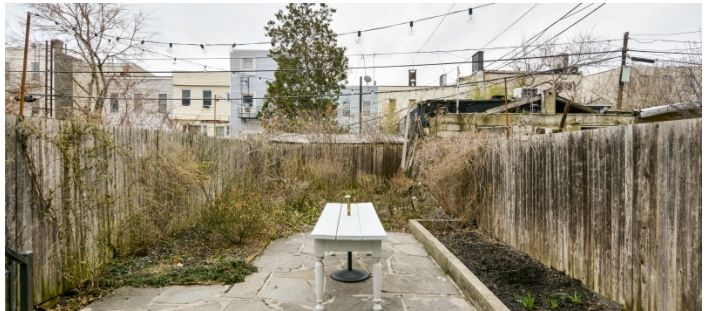
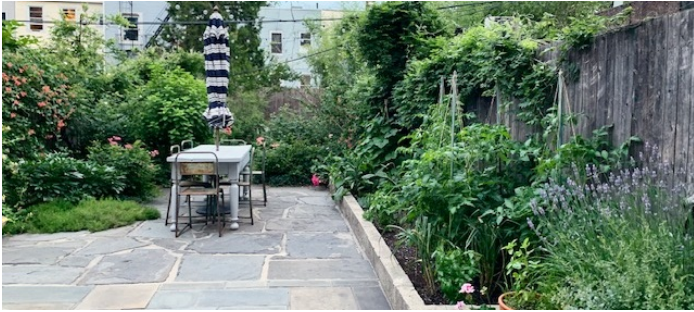
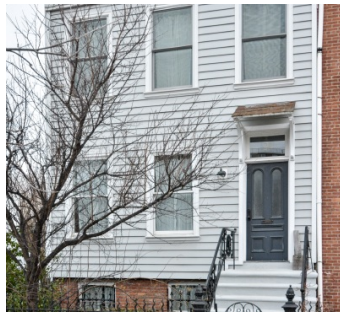
Bedrooms and office are off-limits unless obtain permission before shoot

Fireplace OK with advance permission and supervision

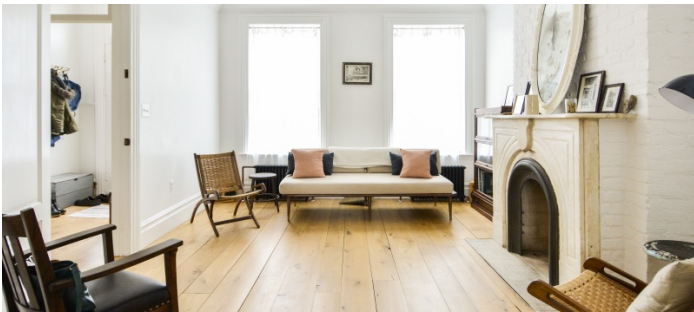
Please clear any intended use of picture animals (owner has cats)

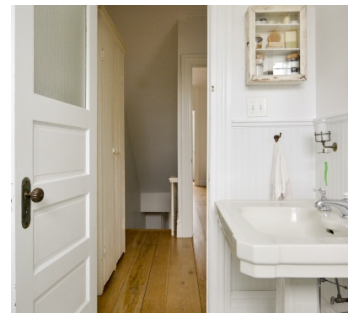
No smoking anywhere (not inside, not in yard)

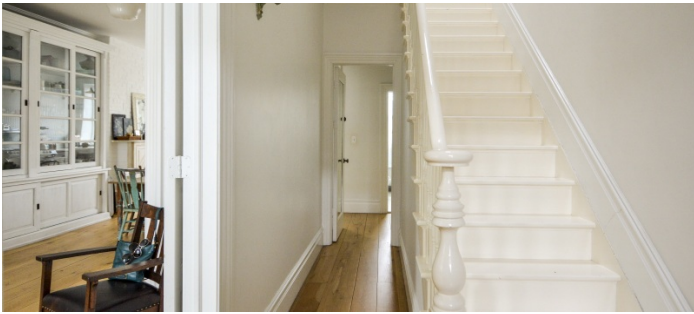
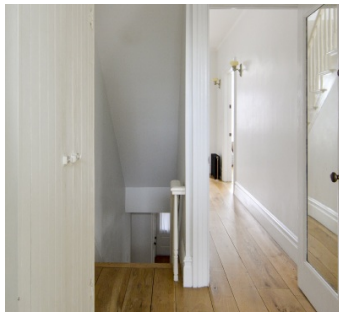
Prefer catering (kitchen), HMU set up on top floor



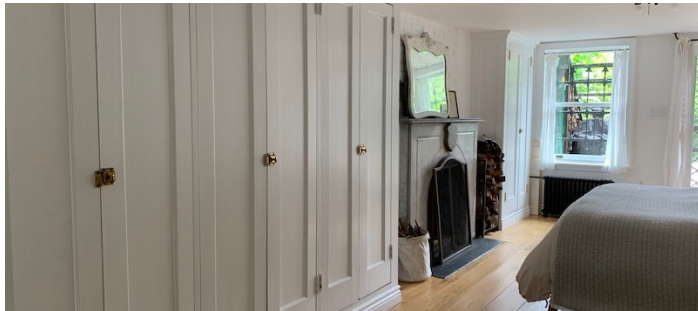
1ST FLOOR - PARLOR LEVEL







GARDEN LEVEL



2ND FLOOR

