

 LOCATION

Brooklyn, NY 11231

 SPECS

6,000 sq ft - indoor

6,000 sq ft - outdoor

 TAGS

Architectural, Balcony, Bathroom, Bedroom, Deck, Fireplace, Floor to Ceiling Windows, Kids Room, Kitchen, Library Room, Living Room, Modern Contemporary, Piano, Pool Outdoor, Rooftop, Staircase, Terrace Patio, Wood Floor

 CATEGORIES

\* In the Zone, Apartment, Loft, Townhouse

## Notes

Renovated warehouse, modern open plan. 3 floors, 4 separate decks, sheer floating staircase, 30' ceiling height on first floor, dramatic curtains, sliding doors open wide to outside deck. Raw concrete floors, walnut finishes, blackened steel finishes, contemporary art on every wall. Mid-Century furniture.

First Floor - entrance, living room with baby grand piano, open plan kitchen with luxury appliances, outdoor deck with sliding doors that open up completely to create indoor/outdoor space, library/study, pool, hot tub.

Second Floor - TV room with projector (with balcony that looks onto first floor), outdoor deck, 3 bedrooms, playroom, 12' ceiling height.

Third Floor - Sunroom/sitting room, outdoor deck with vegetable garden, sliding doors that open up completely to create indoor/outdoor space, master bedroom and master bathroom with sliding doors that fully open to another deck, 12' ceiling height.

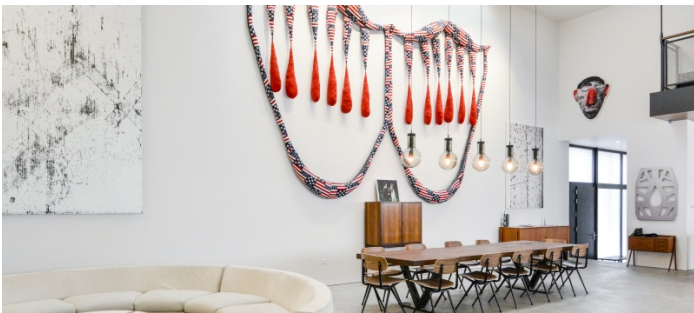
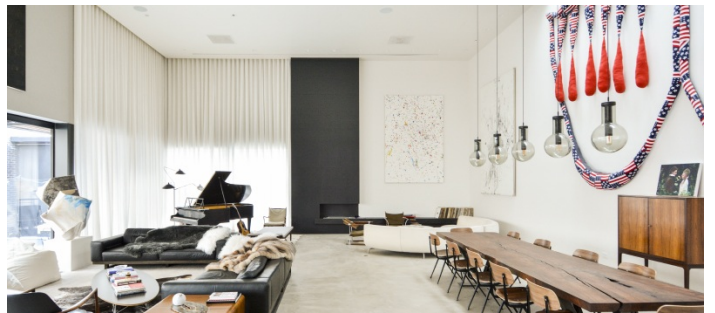
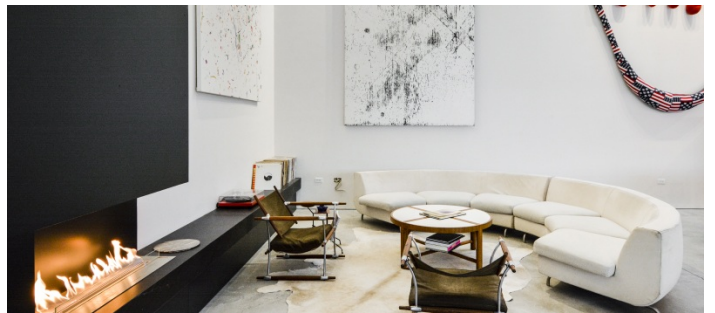
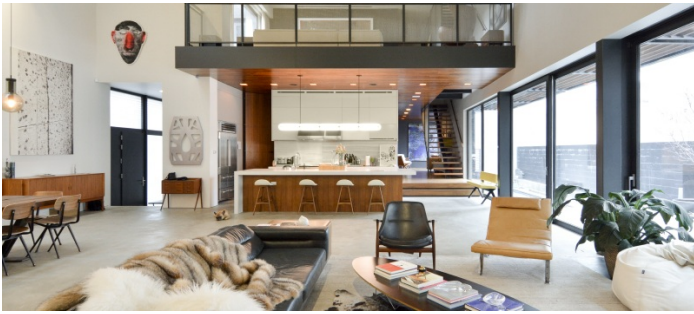
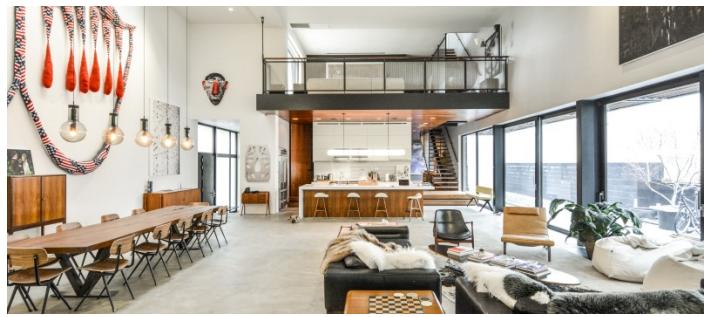
**Restrictions:**

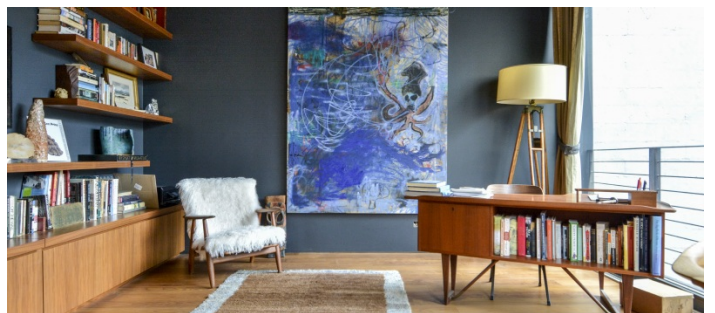
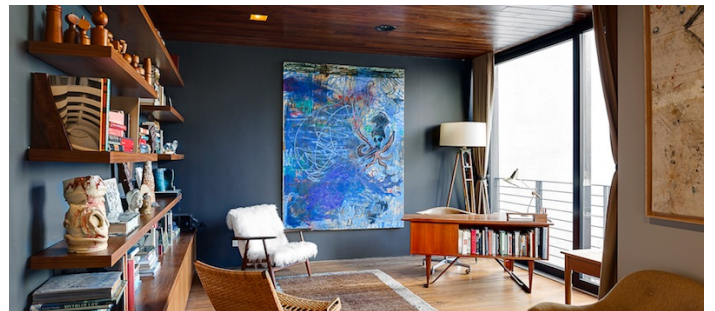
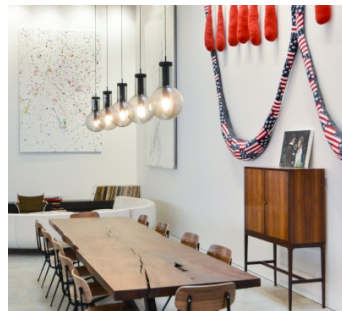
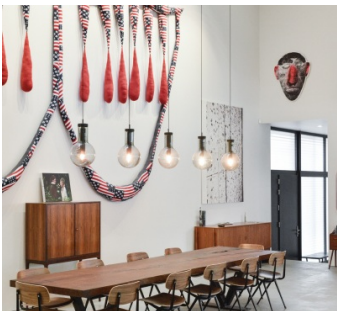
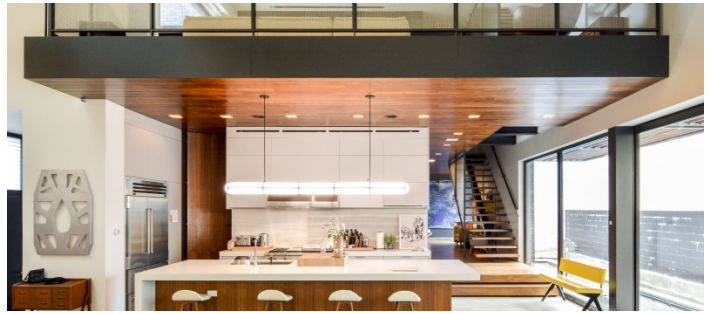
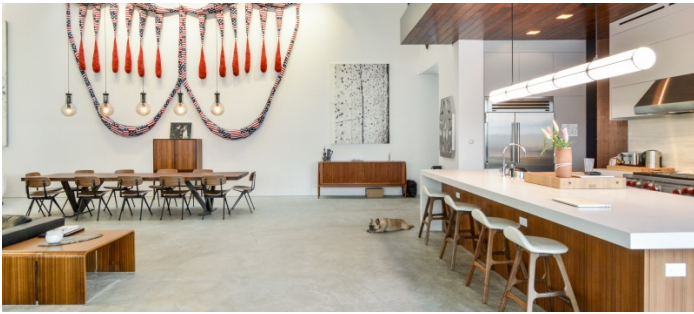
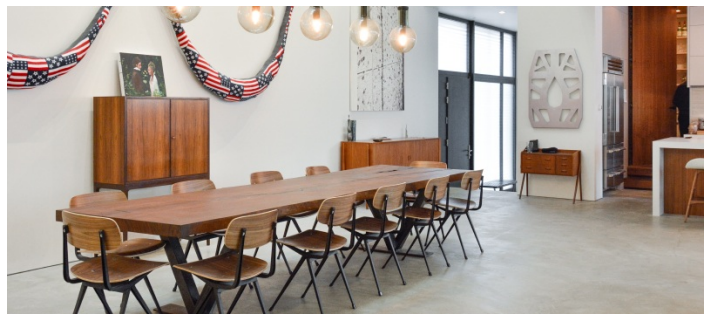
Moving furniture and artwork on a case by case basis.

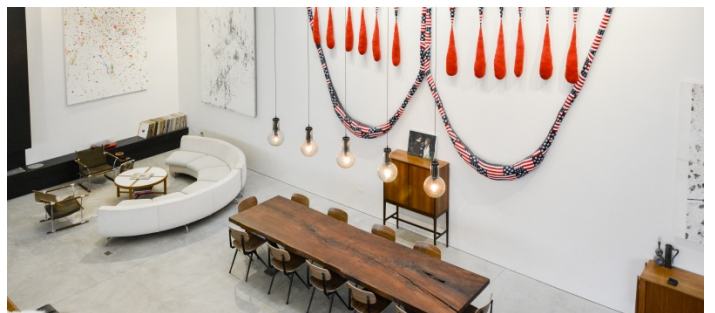
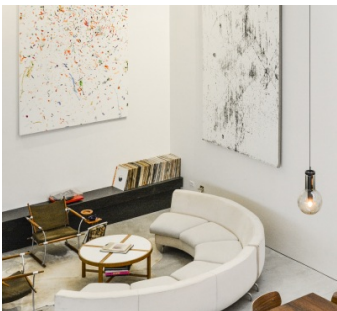
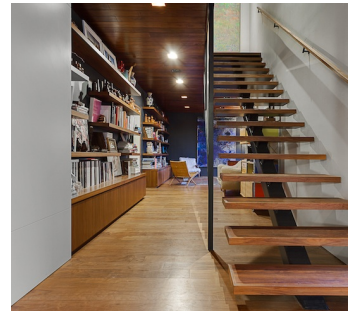
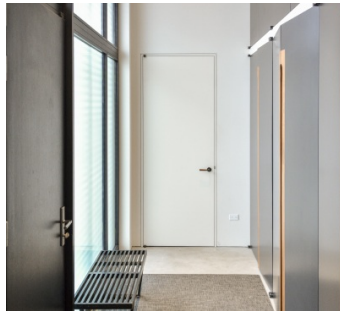
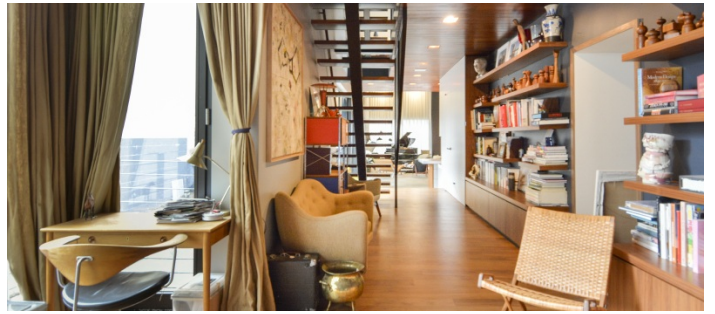
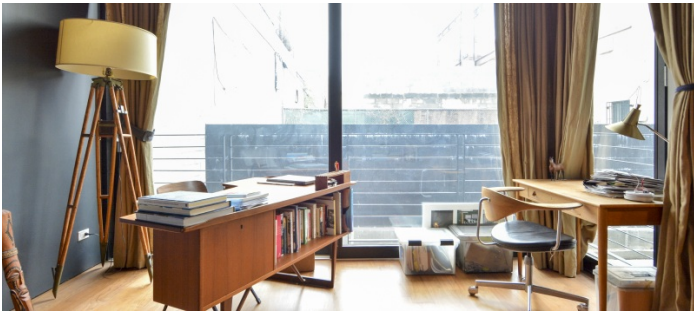
Fees vary per areas of use.



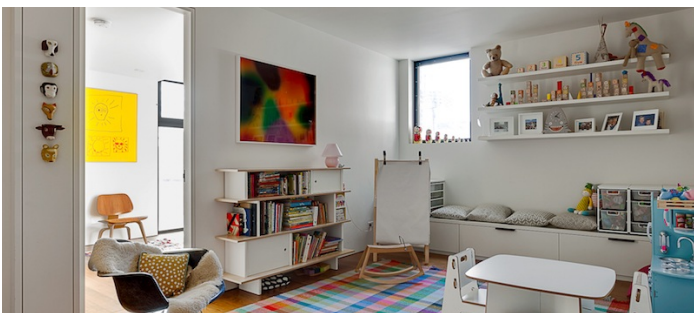
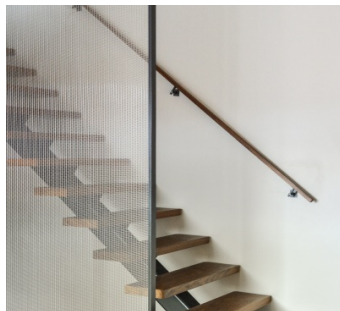
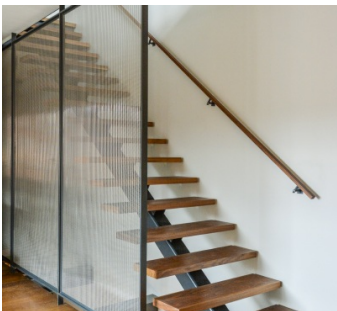
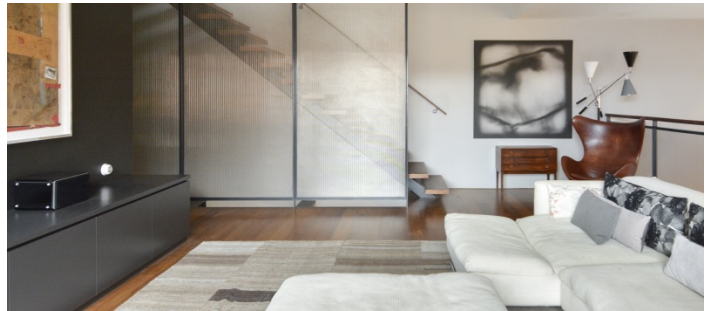
1ST FLOOR



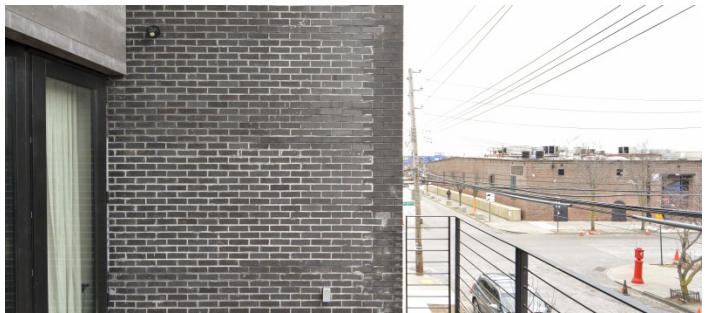
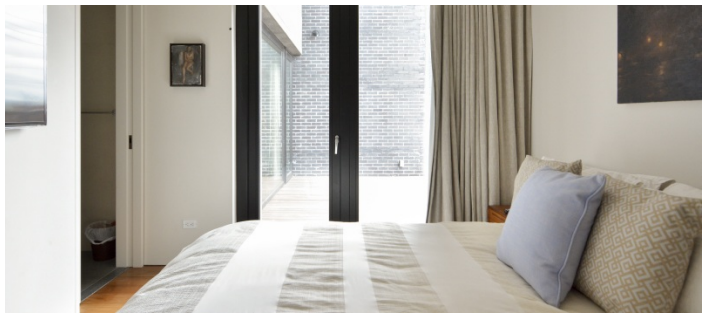
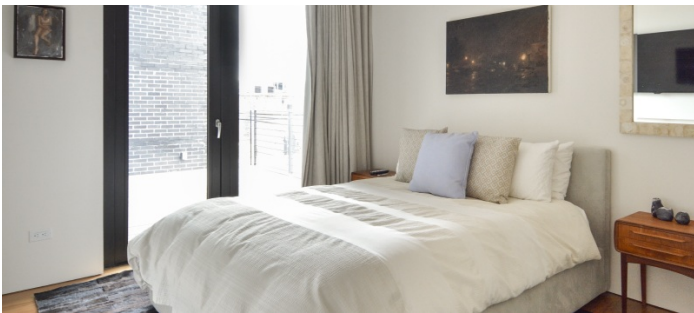


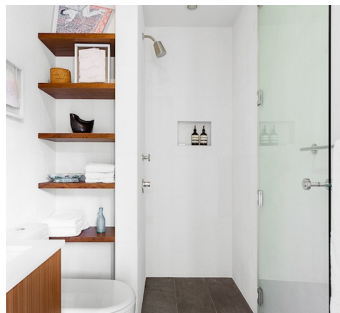
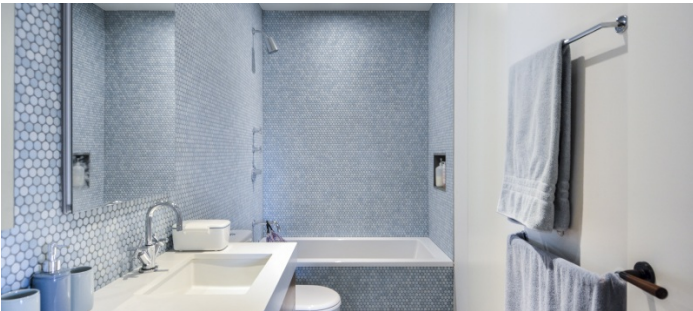
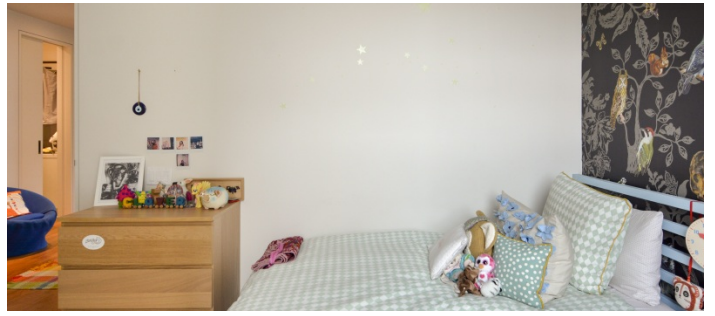


2ND FLOOR

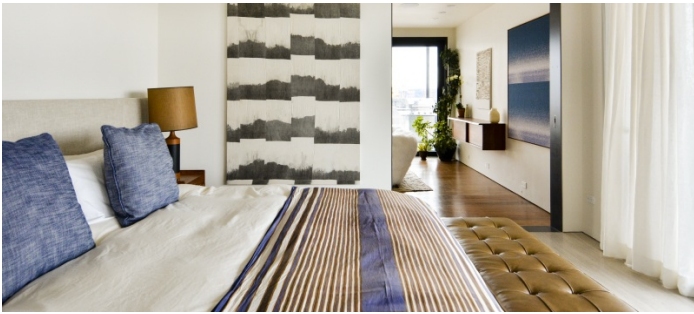
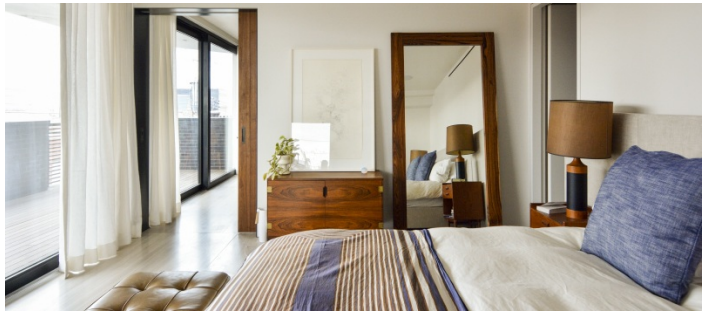
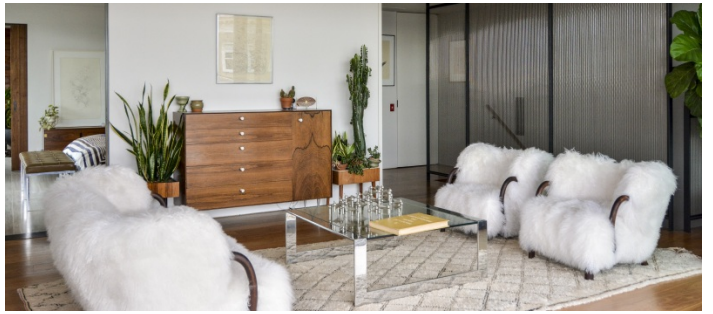
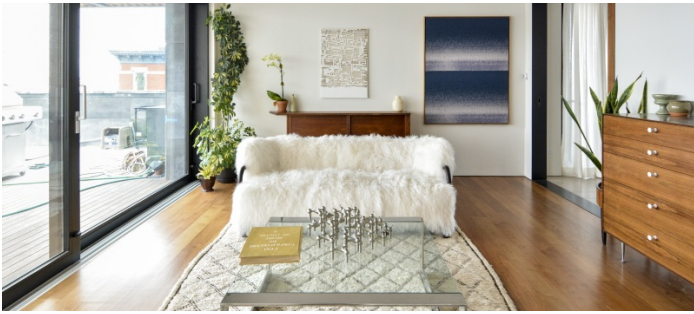
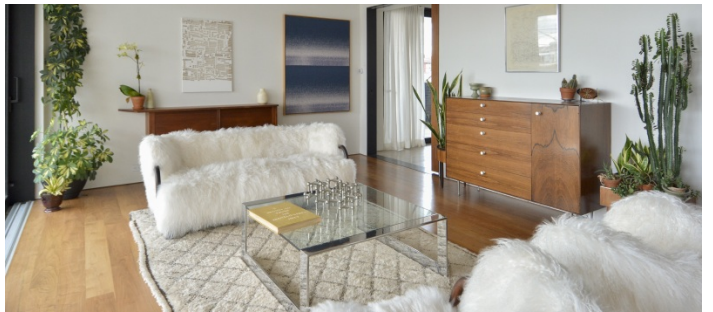


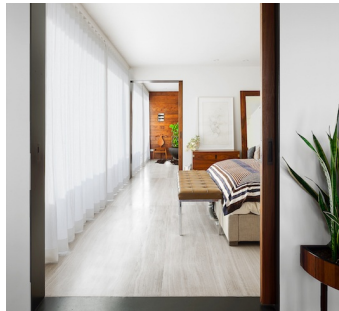
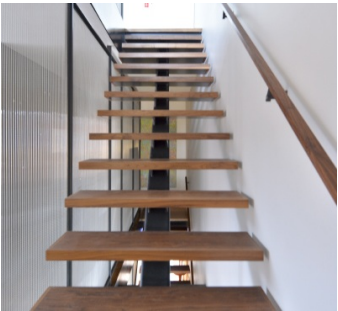












3RD FLOOR POOL AND ROOF TERRACE

