


 LOCATION
Wilton, CT 06897

 DISTANCE FROM NYC
55 miles

 TAGS
Backyard Lawn, Basketball, Bathroom, Bedroom, Carpet, Deck, Exposed Beam, Fireplace, Floor to Ceiling Windows, Garage, Garden, Kids Room, Kitchen, Laundry Room, Library Room, Living Room, Mid-Century, Modern Contemporary, Ping Pong Table, Porch, Staircase, Staircase Ext, Terrace Patio, Walk-in Closet, Wood Floor, Woods

 SPECS
4,000 sq ft
2 acres

 CATEGORIES
House

Notes

This is a 4,000 square foot mid-century modern built in 1961 by James Evans and renovated in 2010 by Robert Dean Architects. It is made of wood, stucco, and glass. The house is built on a rock outcropping and consists of three volumes, connected by staircases.

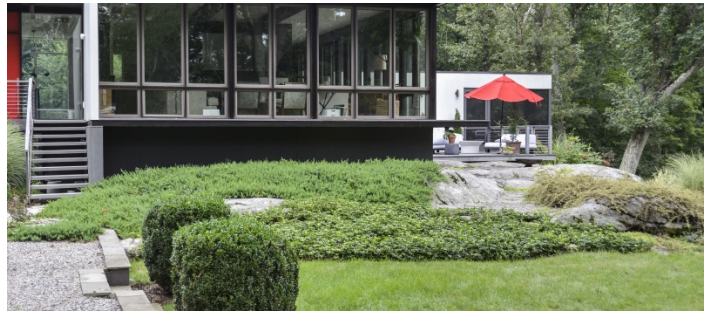
The left volume contains a grass wall-papered master bedroom; large walk in closet; stone-tiled bathroom; and a book-lined study. Below are three bedrooms, a common area, two bathrooms, and a laundry room. The middle volume contains an open-plan kitchen and glass-walled living room divided by a two-sided working fireplace. The right volume contains a large wall-papered sitting room, a fifth bedroom, and powder room. Off a glass set of doors from the kitchen is a large wood porch and screened porch containing a ping pong table.

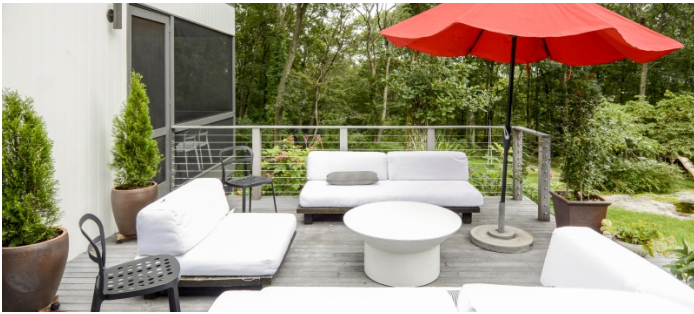
There is a matching box structure set across a pebbled parking area that is a two car garage. The property is 2 acres. The house is surrounded by a tiered landscape of stone fences, lawn, topiaries, tall grasses, and flowers. The rest of the property is wild and stands next to a nature preserve.

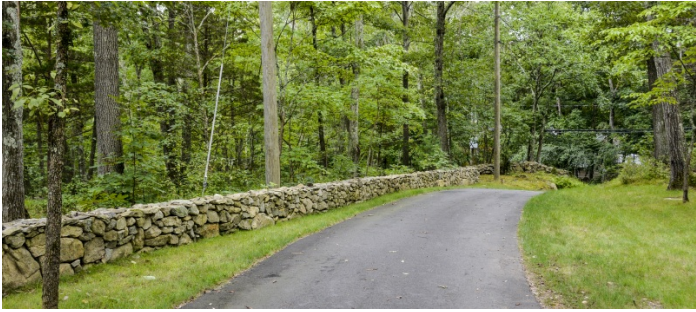
The house contains a mid-century piano, significant pieces of modernist furniture by Finn Juhl, Milo Baughman, Edward Wormley, and Albert Hadley.

Restrictions:

The art and photograph collection on the walls is also by notable figures but permission must be obtained to include them in published photographs.





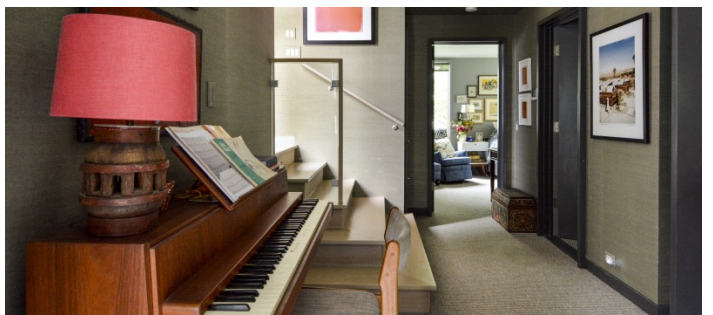




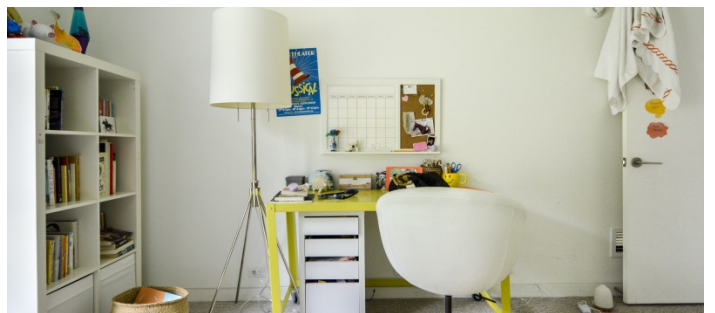




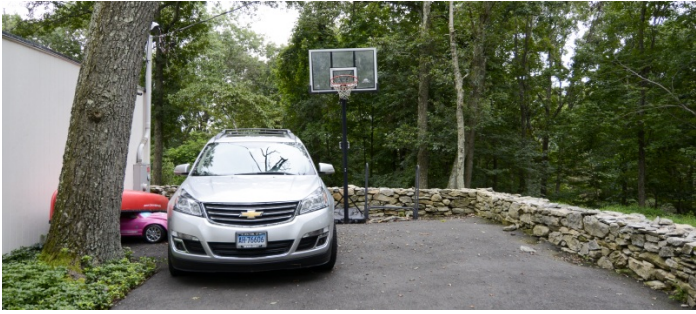












ADDITIONAL INTERIOR IMAGES

