

3291

# Provincetown, MA

## LOCATION

Provincetown, MA 02657

## CATEGORIES

Beach House, Cottage, House

## DISTANCE FROM NYC

295 miles

## TAGS

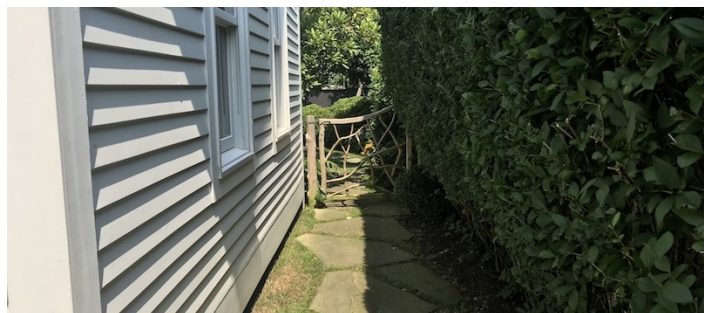
Balcony, Bathroom, Bedroom, Bohemian, Clawfoot Tub, Eclectic Quirky, Exposed Beam, Fireplace, Garden, Kitchen, Living Room, Modern Contemporary, Porch, Rustic, Staircase, Staircase Ext, Terrace Patio, Water View, Wood Floor

## Notes

Dates from 1850, a former Captain's House turned Lodging House with a quirky chill vibe. Original architectural details blend with chic modernity, vintage and antique pieces side by side modern classics, the environs attract the creative culture craving comfort and beauty in imperfection.

Nestled in the historic East End of Provincetown, with panoramic views of Provincetown Harbor, Long Point Lighthouse and further to Cape Cod Bay.

Provincetown, MA accessible via Cape Air via Boston, Fast Ferry from Boston or by Car.



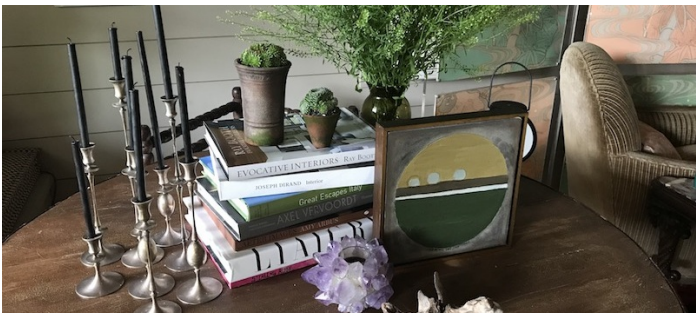
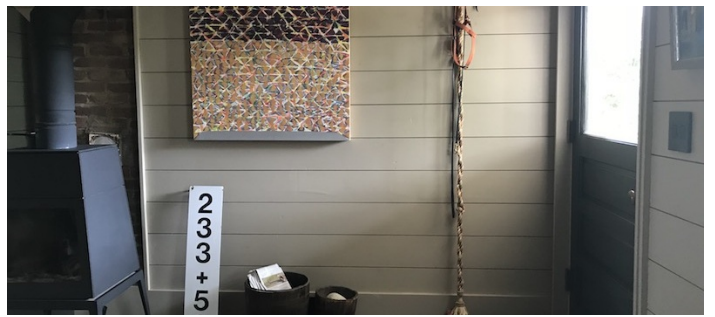


BACK GARDEN PATIO

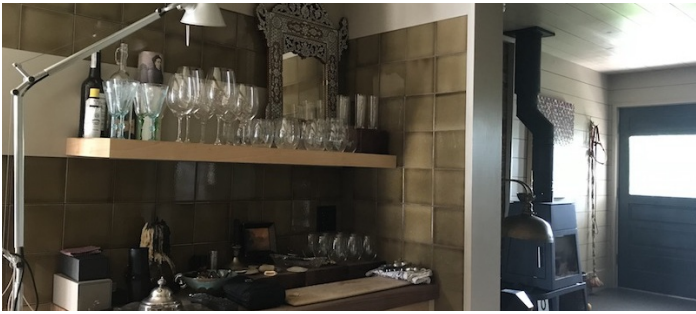


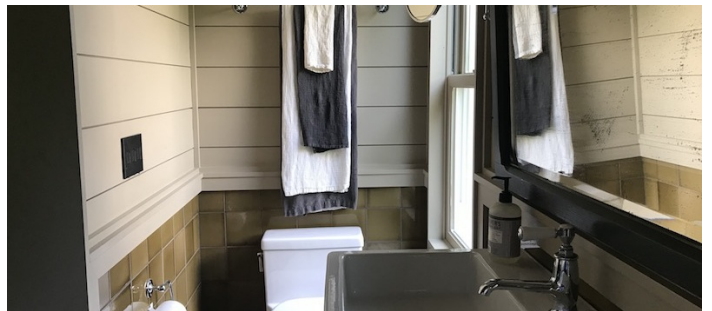
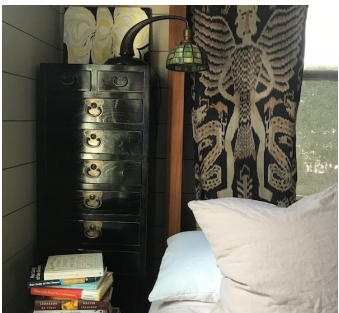
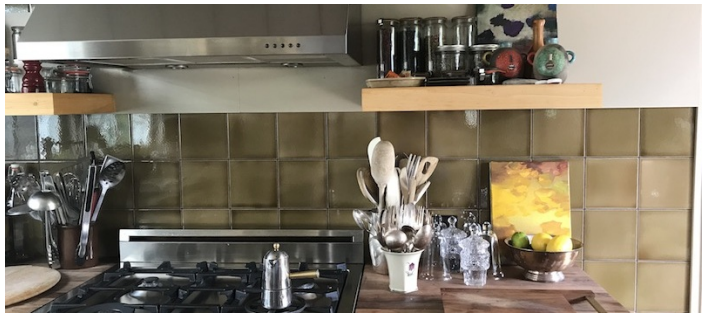


1ST FLOOR UNIT







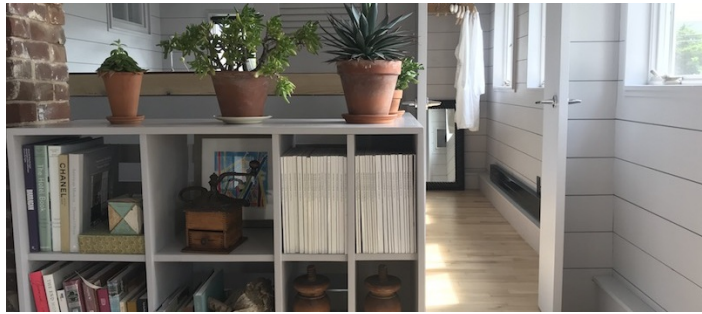






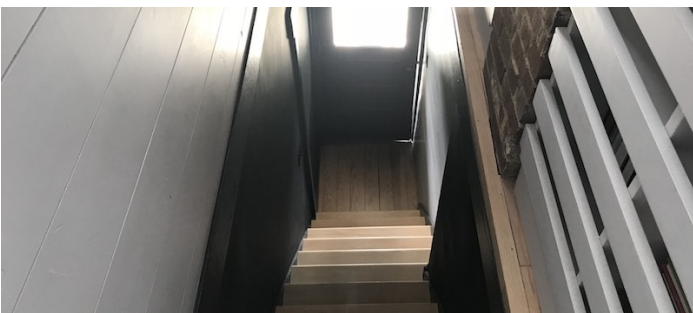




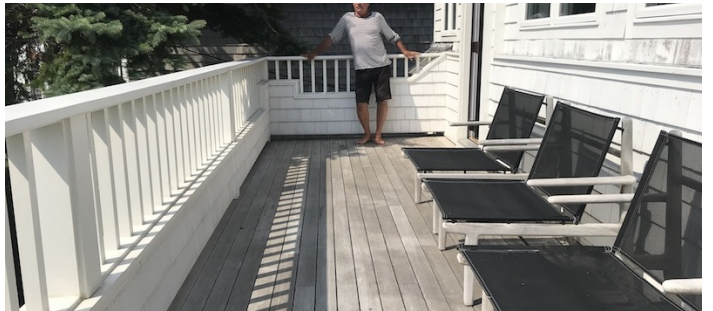








2ND FLOOR - FRONT BALCONY PORCH



EXT STAIRWELL - BACK GARDEN TO 2ND FLOOR

