

4005

Holmdel, NJ

LOCATION

Holmdel, NJ 07733

DISTANCE FROM NYC

45 miles

TAGS

60's style, Architectural, Carpet, Colorful, Deck, Elevator, Exposed Beam, Floor to Ceiling Windows, Historic, Modern Contemporary, Staircase, Staircase Ext, Terrace Patio, Wood Floor

SPECS

2 million sq ft
225 acres

POWER

3 phase 270

CATEGORIES

Lobby, Office

Notes

Very expensive.

"Metroburb" comprised of a National Historic Landmark Building with 2 Million Square feet under one roof, 6000 parking spots and over 225 acres.

The following space available for photo or location shoots:

Three (3) 8 Story Atrium/Exhibit Areas each with approximately 30,000 SF of space

One Grand Ball Room with 13,250 SF

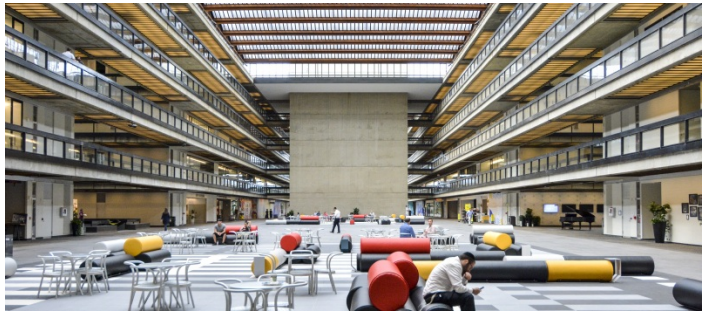
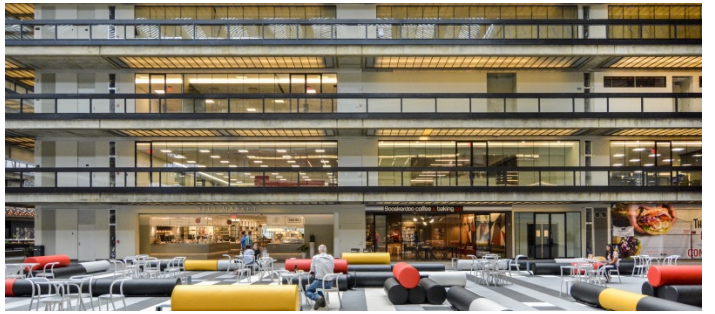
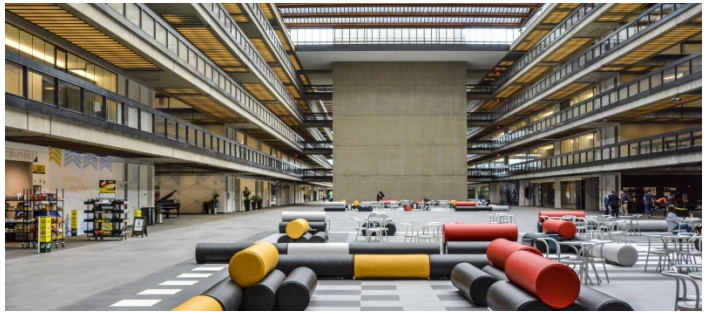
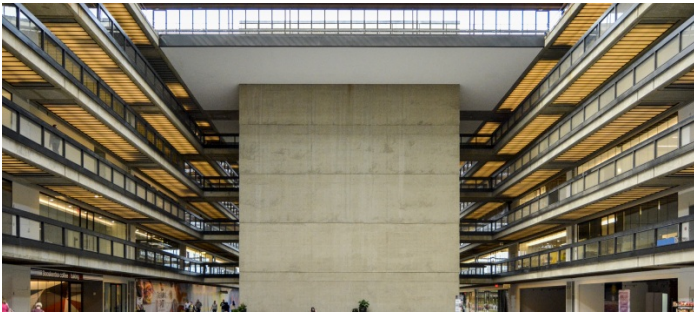
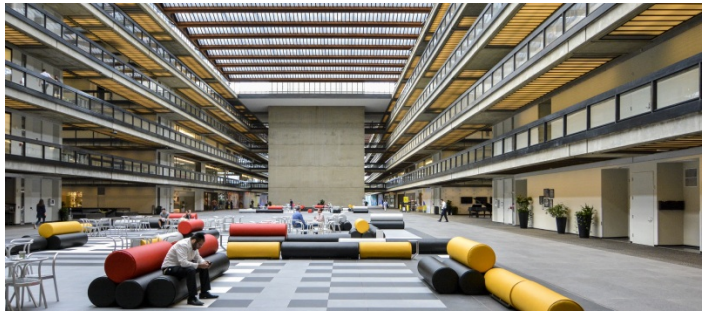
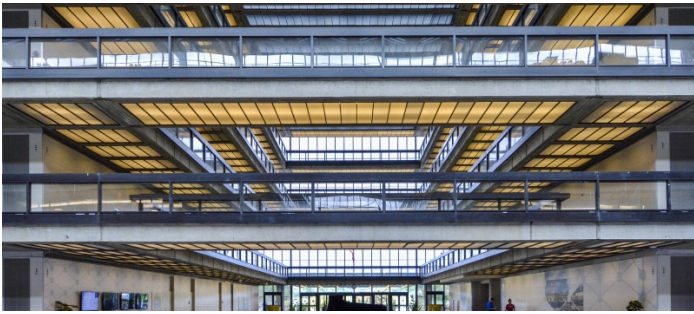
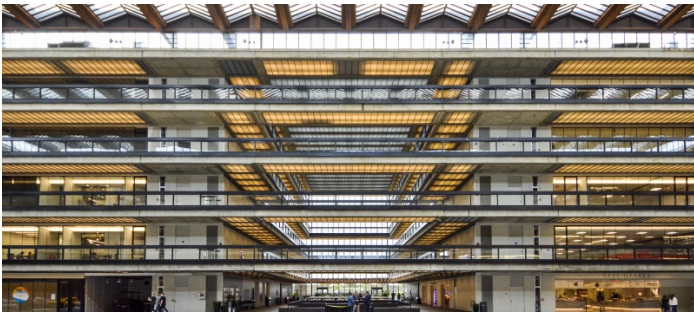
One 300 seat tiered theater with 600 SF stage

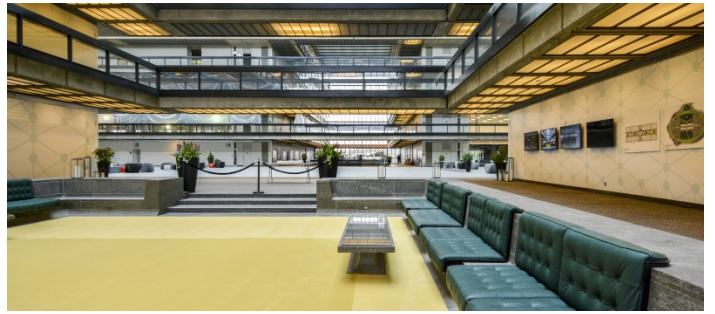
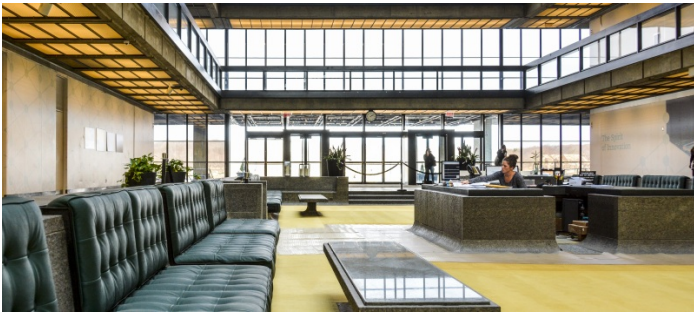
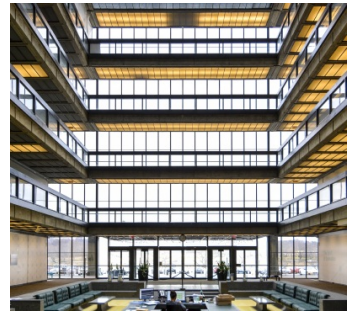
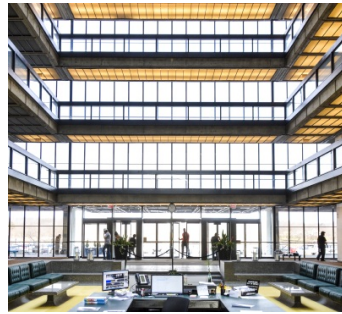
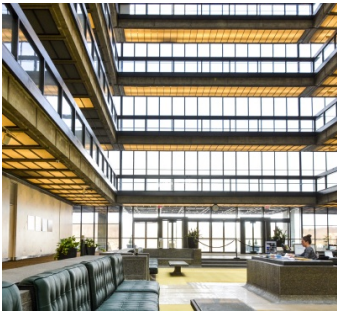
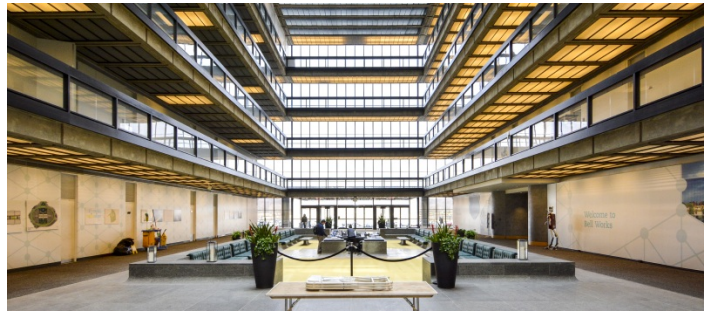
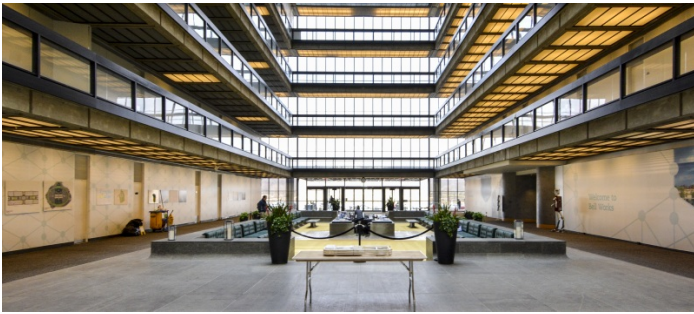
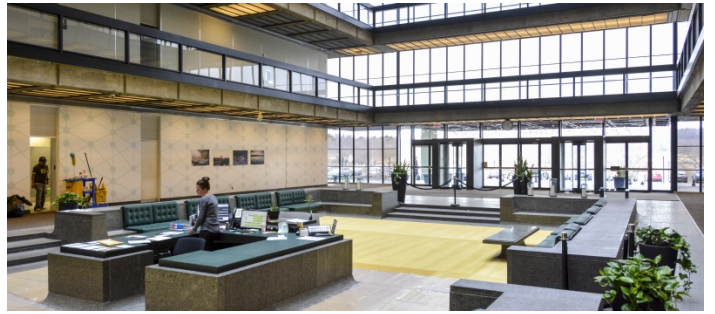
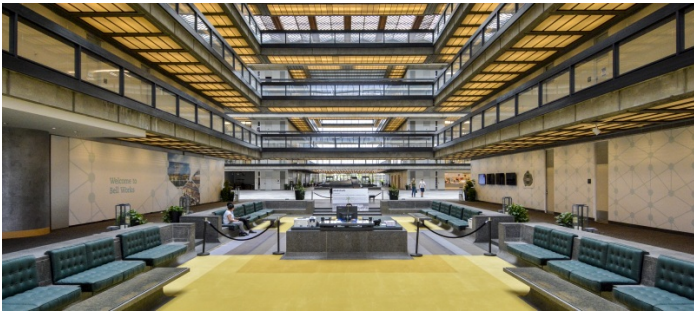
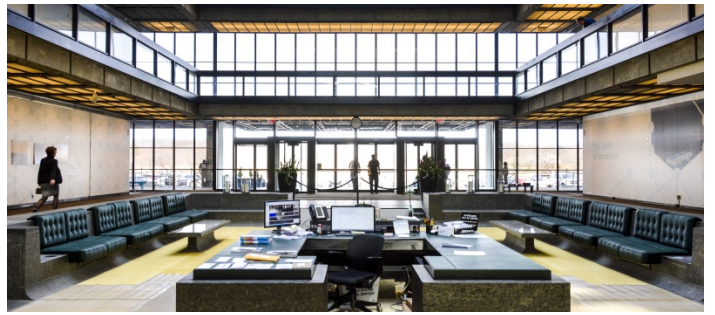
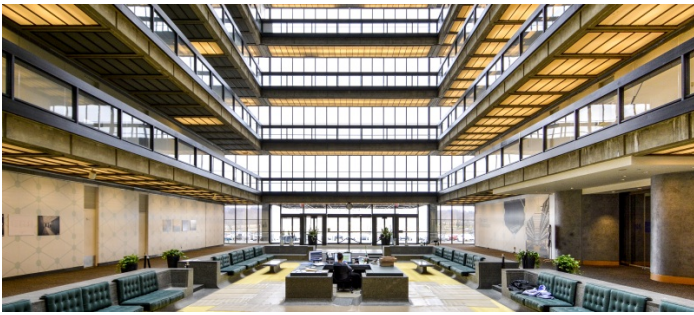
3 General Session Conference Rooms totaling over 7,000 SF of space

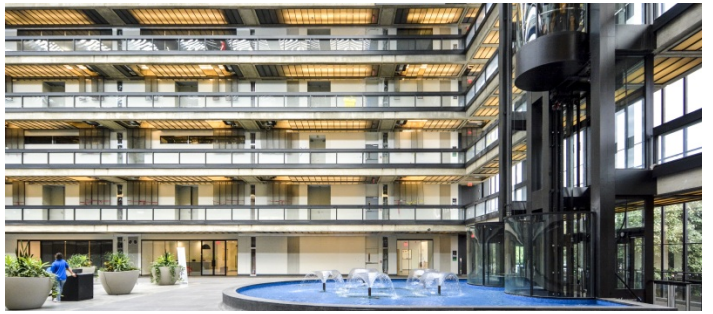
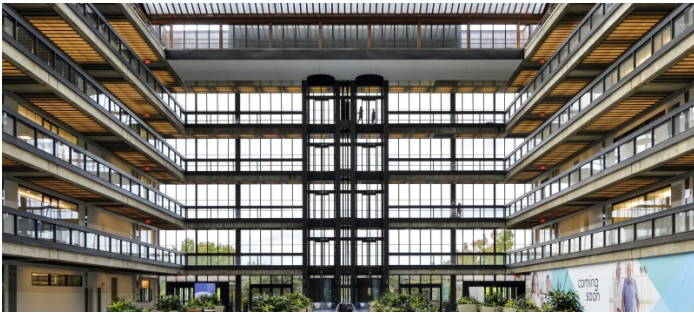
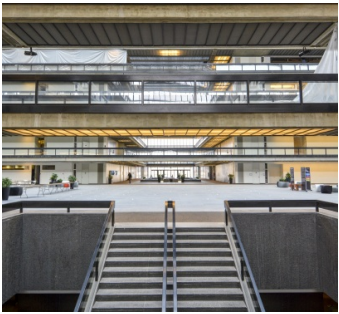
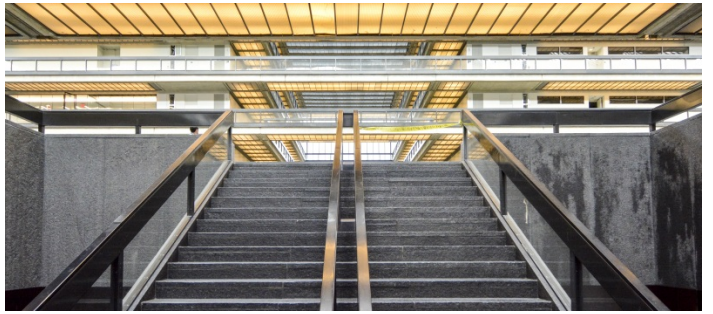
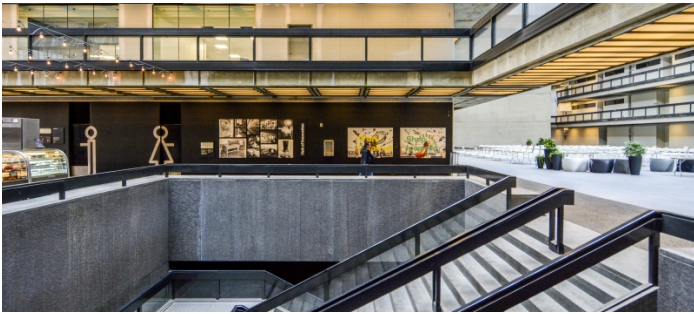
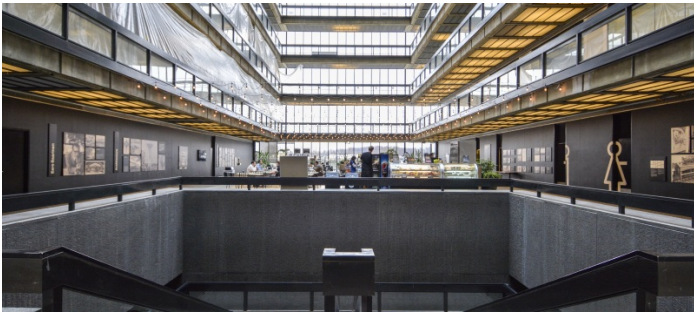
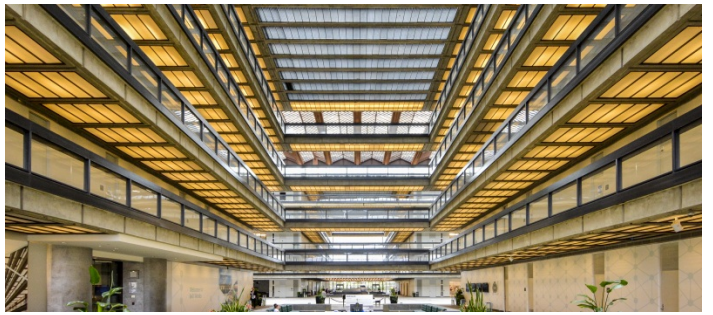
8 Board rooms seating from 10 - 16 guests

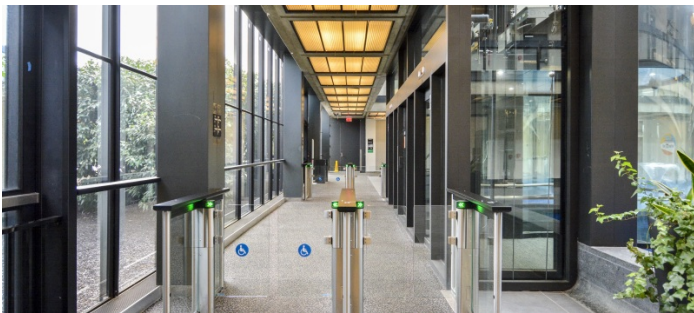
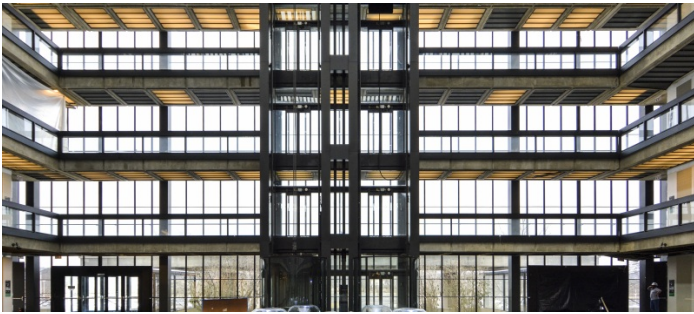
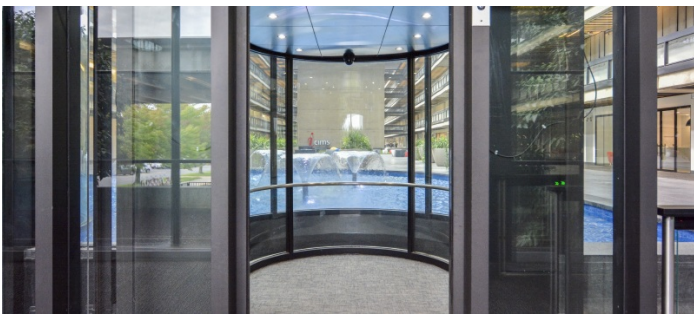
Restrictions:

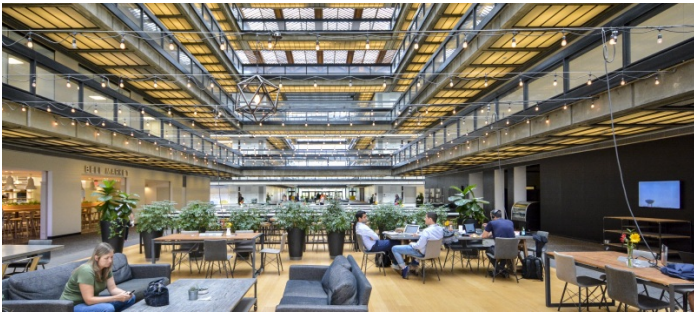
Atrium Amplified Sounds restricted M-F 7AM - 5PM

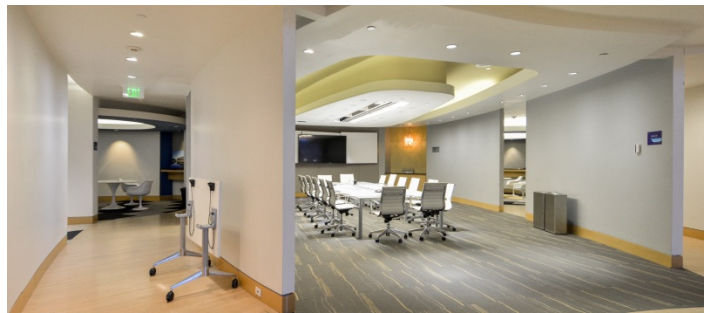
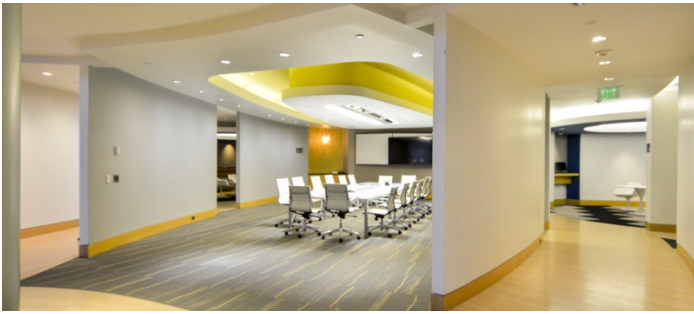
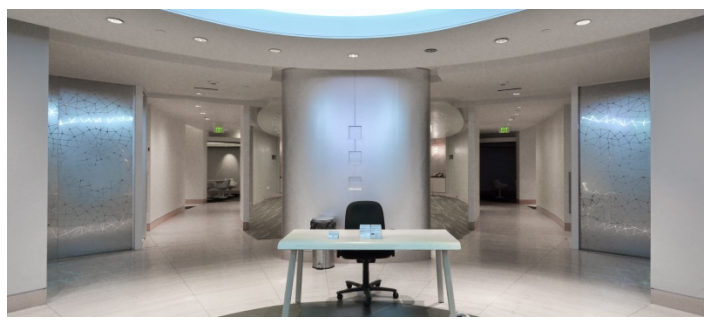




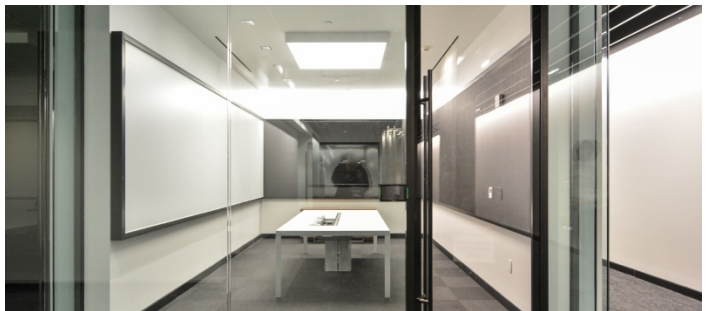
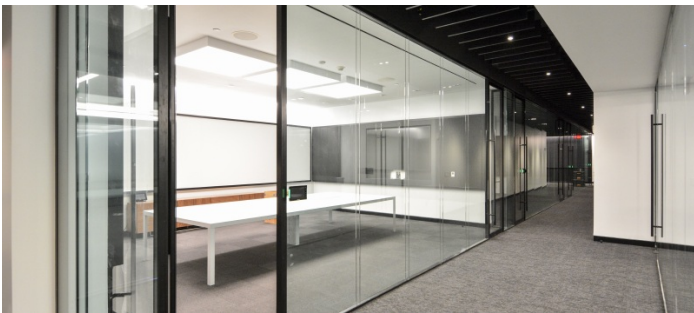


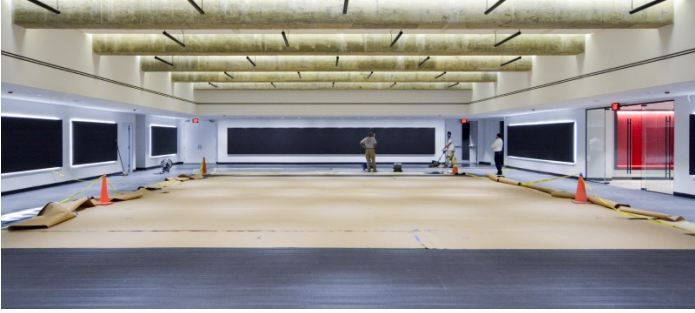












EXTERIOR

