

 LOCATION

Cold Spring, NY 10516

 DISTANCE FROM NYC

54 miles

 TAGS

Backyard Lawn, Bedroom, Carpet, Classic Grand, Colonial Federal, Colorful, Exposed Beam, Fireplace, Garden, Greenhouse, Historic, Lake or Pond, Library Room, Living Room, Ornate, Porch, Staircase, Terrace Patio, Traditional, Wallpaper, Water View, Wood Floor, Woods

 SPECS

10,000 sq ft

110 acres

 CATEGORIES

Event Space, House, Library / Museum, Mansion

Notes

10,000-square-foot Neoclassical mansion with renowned collection of early 19th-century decorative arts and New York furniture. 110 acre property featuring Great Lawn with brick path and unrivaled Hudson River views (mountains, Bear Mountain Bridge, and the U.S. Military Academy at West Point). Orangery with herb garden. West Meadow with stunning river views. One mile woodland trail with river views, small waterfall, stream, gazebo, meadow amidst the trees. Apple orchard with brick path.

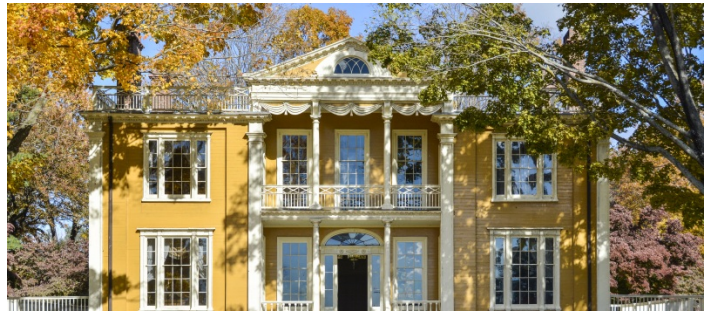
3 floors in Mansion - 12' ceiling height.

Restrictions:

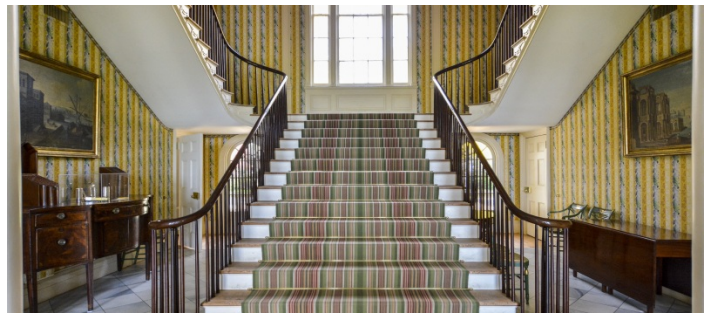
Collection in the house can stay put unless a client needs it moved or replaced with different furniture/objects. People and equipment allowed in and around furniture, so a client would typically only move something if it was in the way or they wanted to bring in furniture someone could sit on or use in a scene.

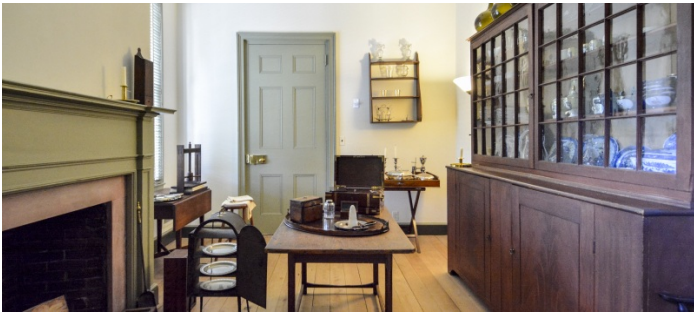
Please handle museum collection (furniture, objects, art, etc.) with utmost care.

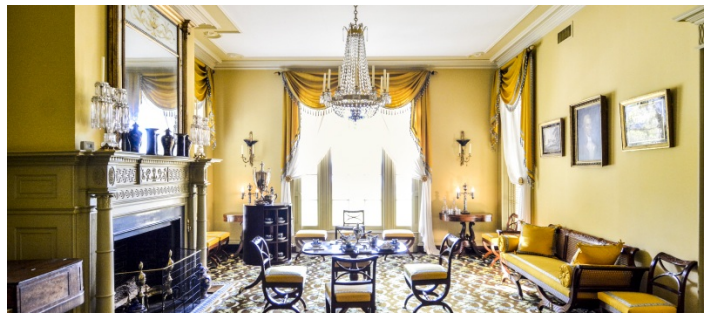
In some cases, furniture and artwork must be moved by art handlers and stored in temperature controlled environment.

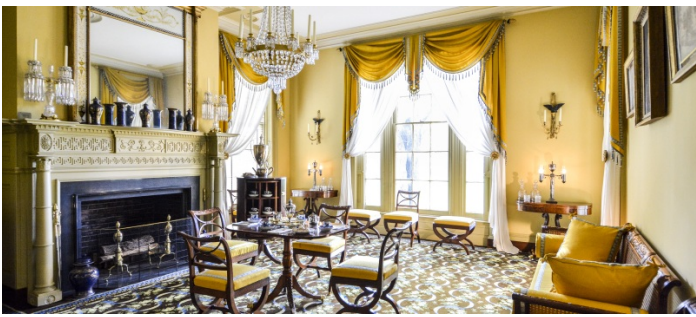


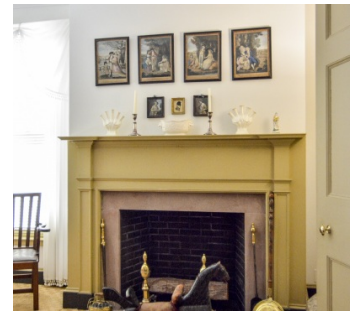
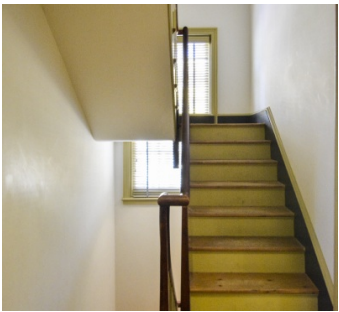








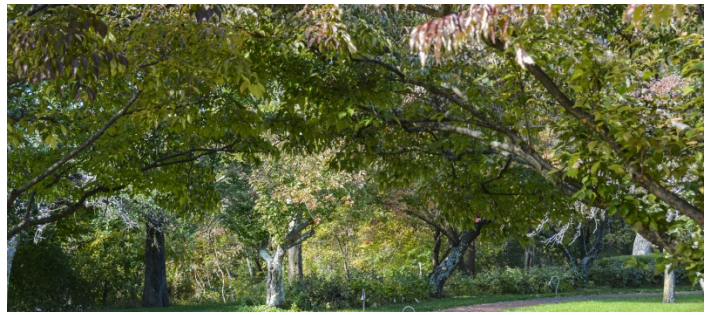






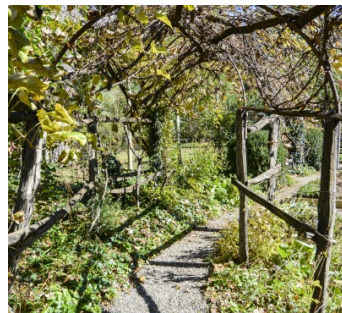






POND







VISITOR CENTER/CARRIAGE HOUSE - EXTERIOR



VISITOR CENTER/CARRIAGE HOUSE - INTERIOR

