

 LOCATION

Tarrytown, NY 10591

 SPECS25 acres
5,358 sq ft DISTANCE FROM NYC

27 miles

 CATEGORIES

* In the Zone, Cottage, Event Space, House, Mansion

 TAGS

Backyard Lawn, Balcony, Ballroom, Basketball, Bathroom, Bedroom, Carpet, Classic Grand, Colorful, Exposed Beam, Fields, Fireplace, Garden, Greenhouse, Historic, Kitchen, Lake or Pond, Library Room, Living Room, Ornate, Parquet, Piano, Ping Pong Table, Porch, Skylight, Staircase, Staircase Ext, Stone Wall, Terrace Patio, Traditional, Wallpaper, Wood Floor, Woods

Notes

Although reconstructed in 1928, The Estate was originally built in 1910. A grand French-style manor with a stucco facade set on 25 acres with enviable Hudson River views, the Estate has been graced by the likes of Amelia Earhart and Will Rogers.

In addition to the main mansion, there is a rustic cottage, about 8 acres of private woods, and a pond.

Note: Some of the landscaping shrubs have changed in the front of the main house.

Restrictions:

Restricted hours between midnight to 8am.

No nailing into walls. No painting of walls.

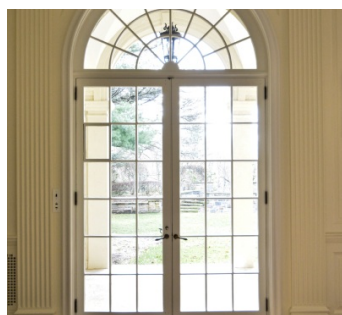
Fireplaces are non-working.

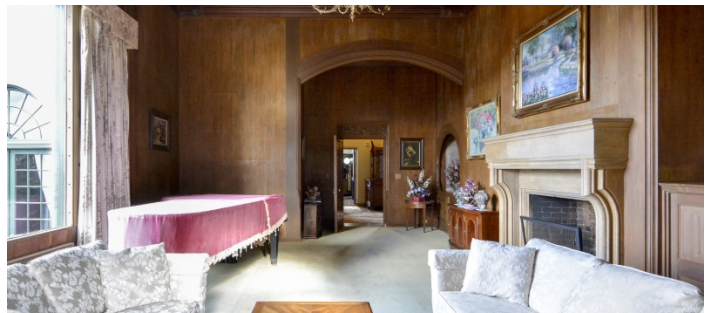


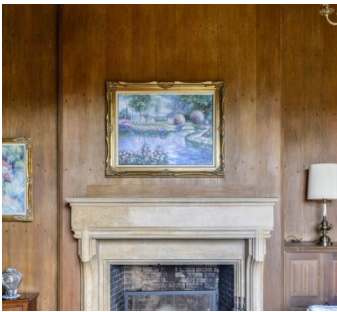


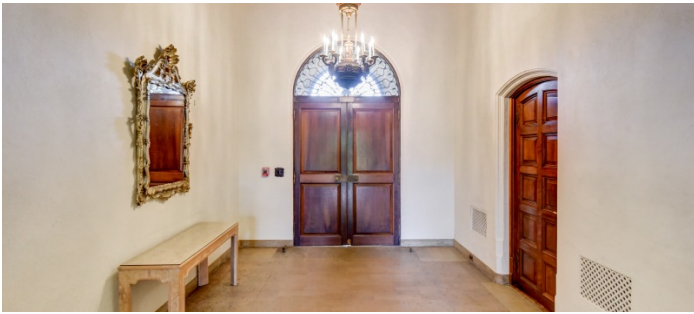
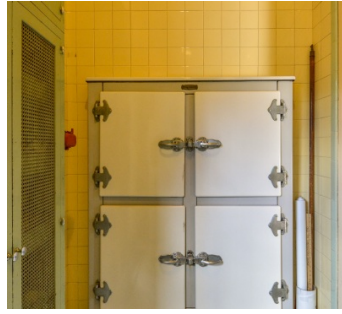


MAIN HOUSE - 1ST FLOOR







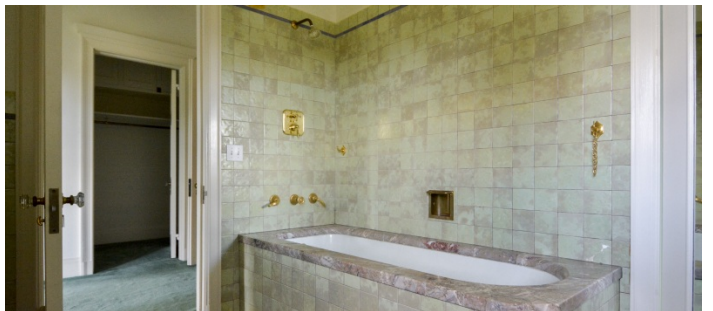
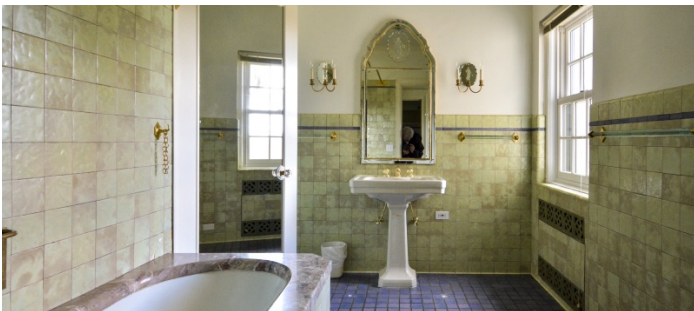


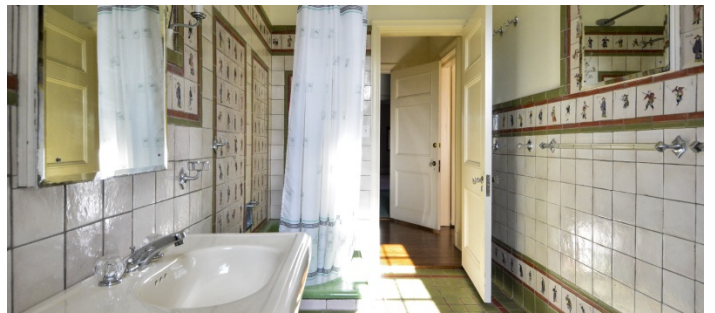
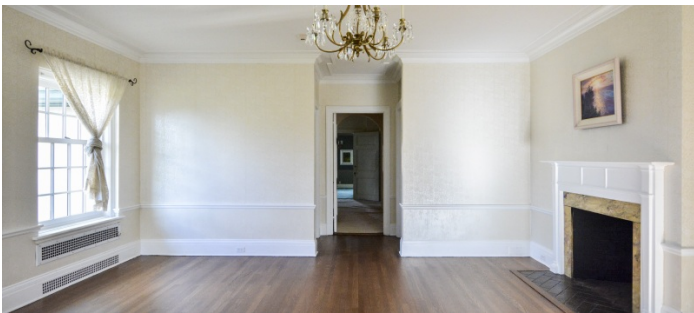


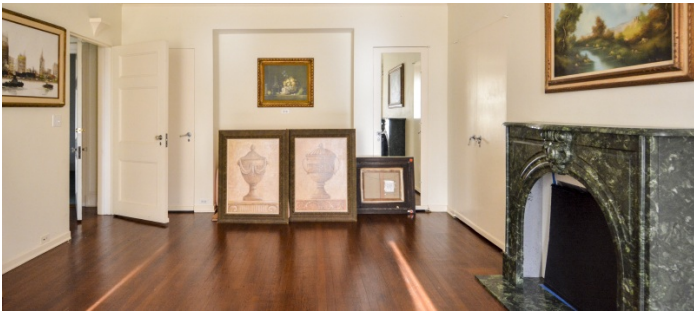
MAIN HOUSE - 2ND FLOOR

Notes

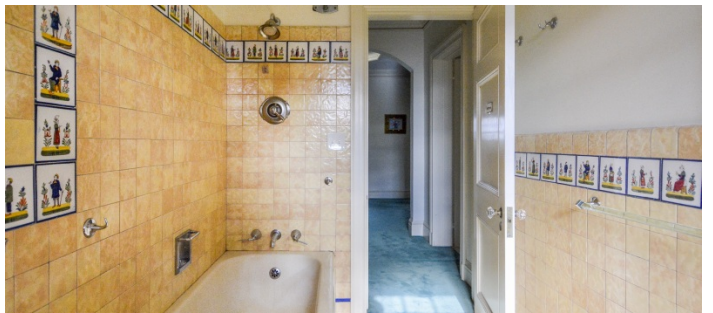
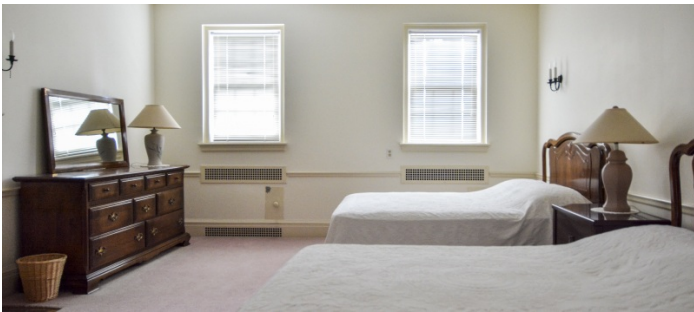
Note blue room now painted beige

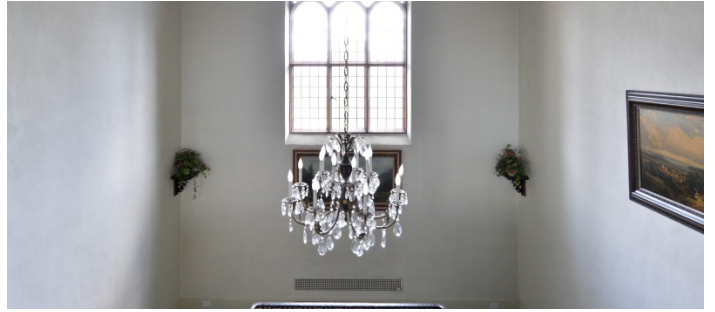
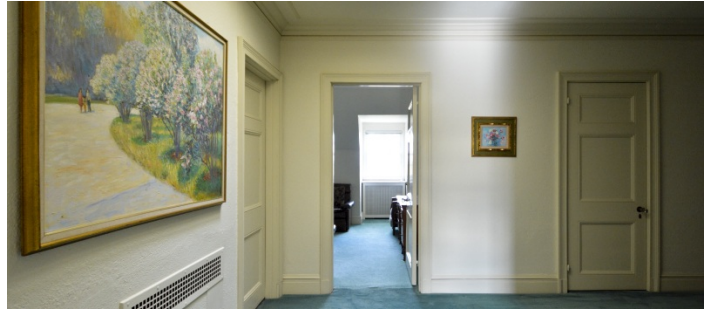




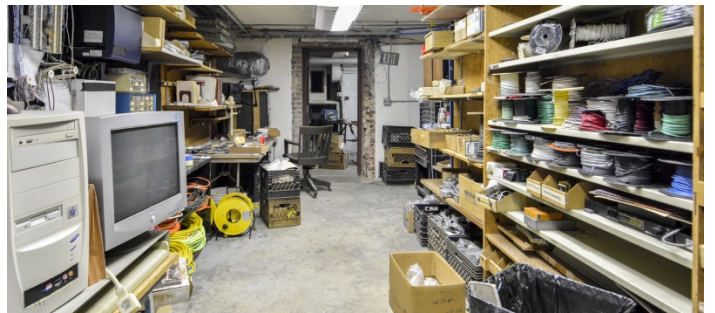
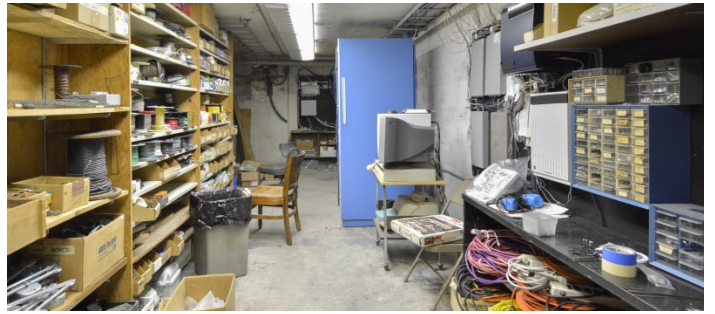
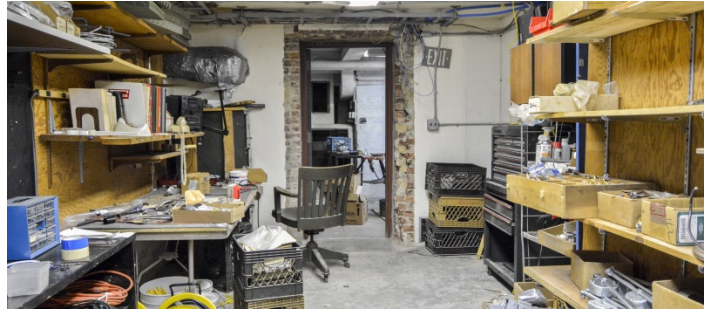
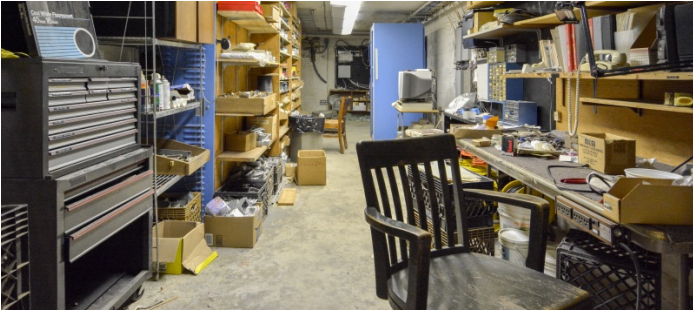
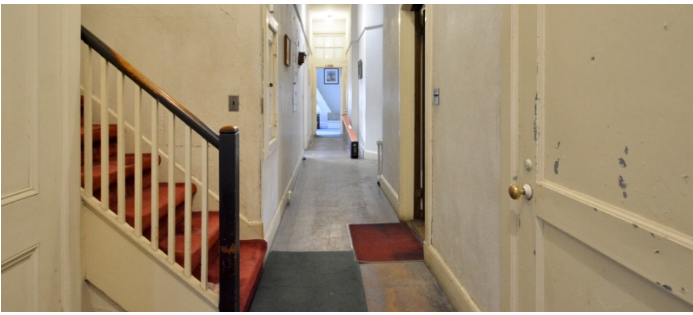


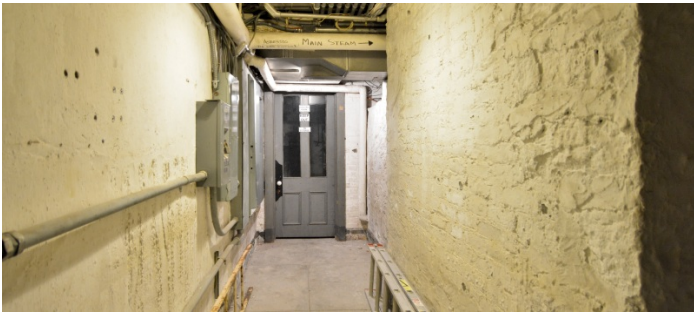
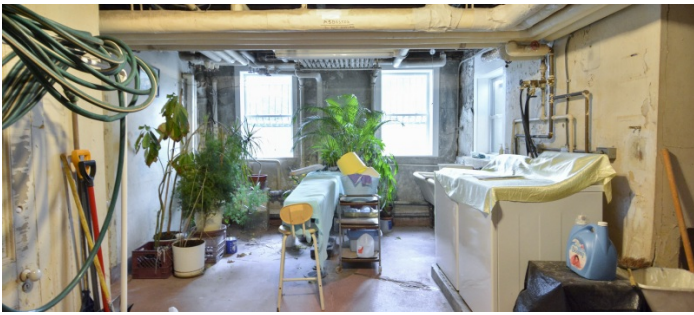


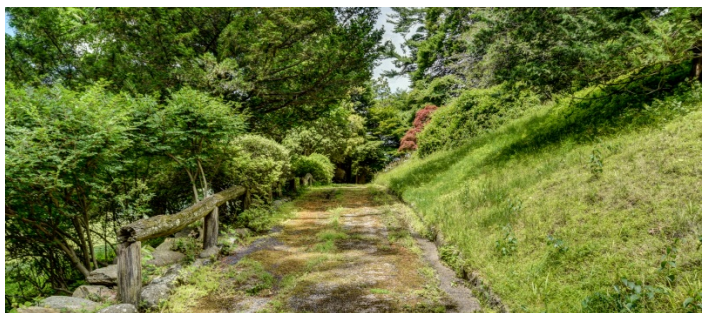
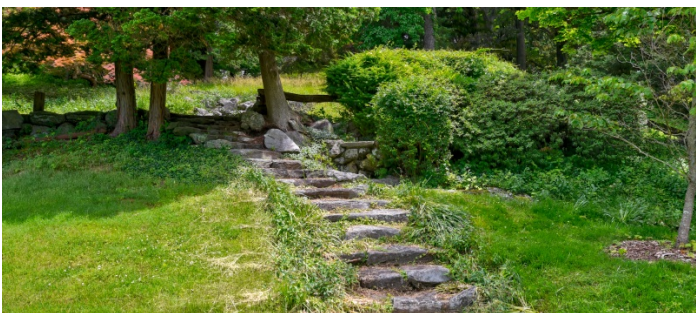
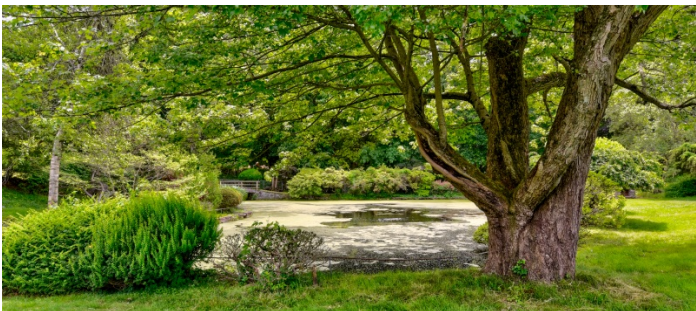


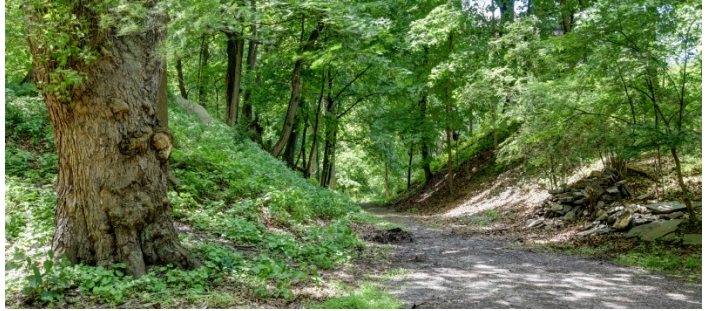
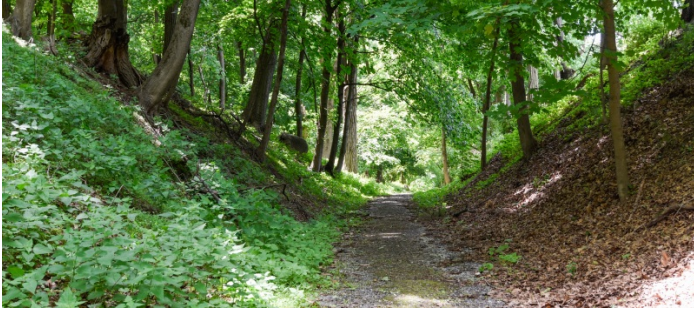
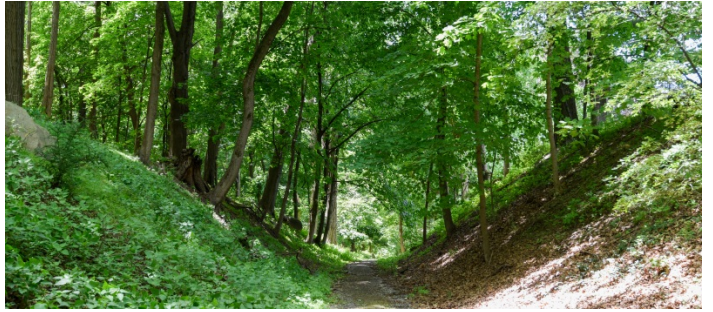


BASEMENT







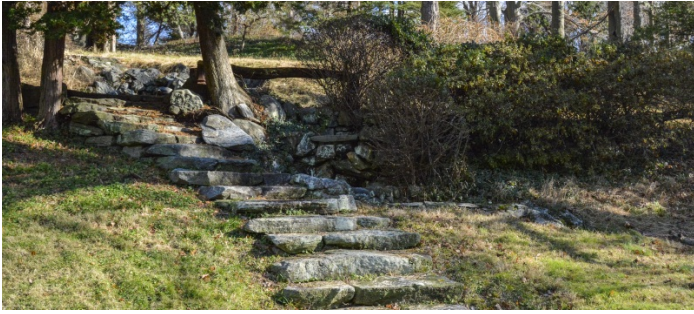
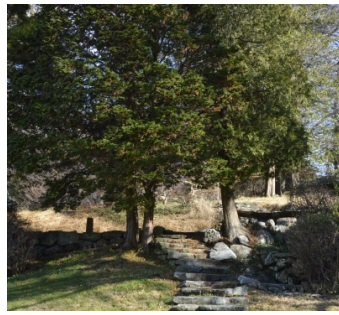


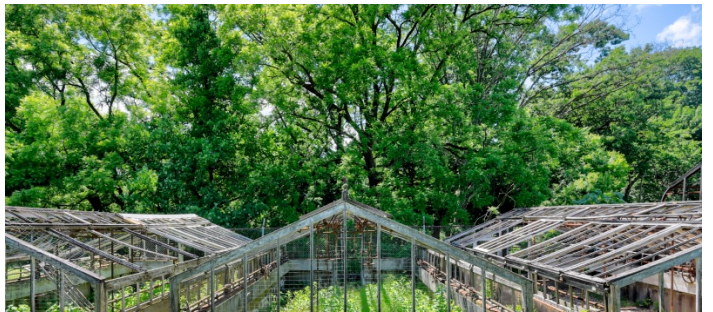






















BASKETBALL COURT

