

7014

Newark, NJ

📍 LOCATION

Newark NJ 07105

📏 DISTANCE FROM NYC

14 miles

🏷️ TAGS

Bathroom, City View, Concrete, Distressed Patina, Eclectic Quirky, Exposed Beam, Exposed Brick, Kitchen, Living Room, Masculine, Modern Contemporary, Piano, Raw Industrial, Rooftop, Skylight, Staircase, Wallpaper

📐 SPECS

Square Footage: 4,500

Ceiling Height: 16'-20'

Dinner Capacity: 80

Cocktail Capacity: 175

⚡ POWER

120 amps

🏷️ CATEGORIES

* In the Zone, Event Space, Loft, Studio, Warehouse / Factory / Industrial

Notes

A large industrial chic factory 4,500 sq ft loft from the 1920's with an open layout, 20 foot high ceilings and copious amounts of natural light through the eight 9x9' factory windows.

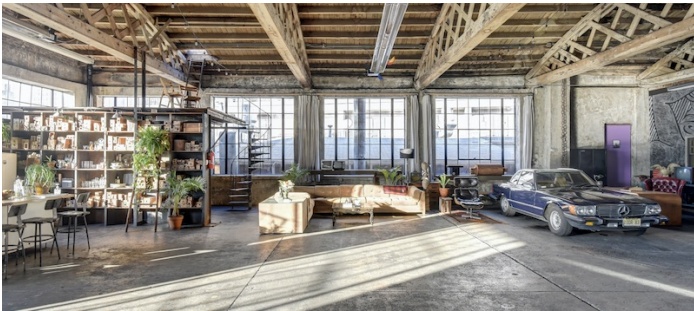
Located on the second floor with a 60' vehicle ramp with street access, the loft has a whole host of vintage props, including an '83 Mercedes and '81 Honda motorcycle parked inside.

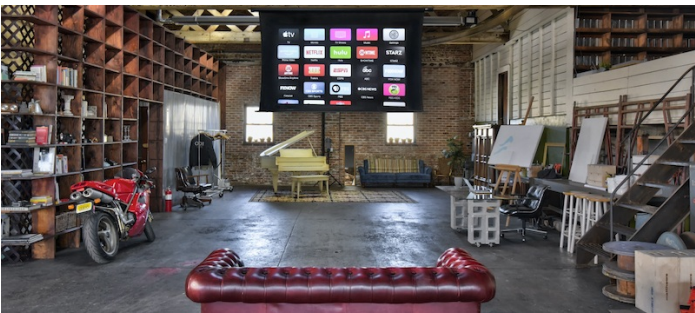
The open layout is thanks to the barrel arched trusses which sit on top of a fully concrete structure with no interior columns or support beams in the way.

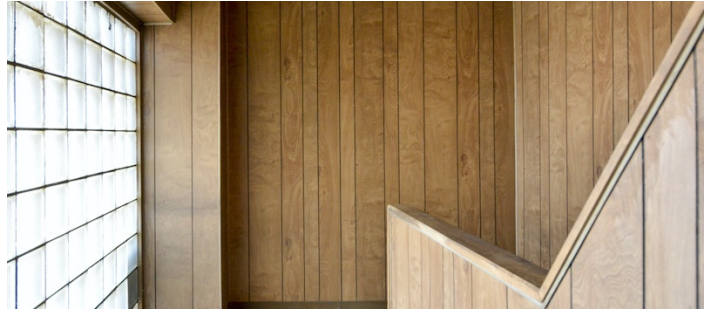
The first floor (5,000 sq ft) is an existing transformer factory which hasn't changed aesthetic from the 60's. Appealing for it's very industrial, machine filled workshop, it's like traveling back to a different era.

Restrictions:

No painting or nailing in walls without prior discussion and approval.



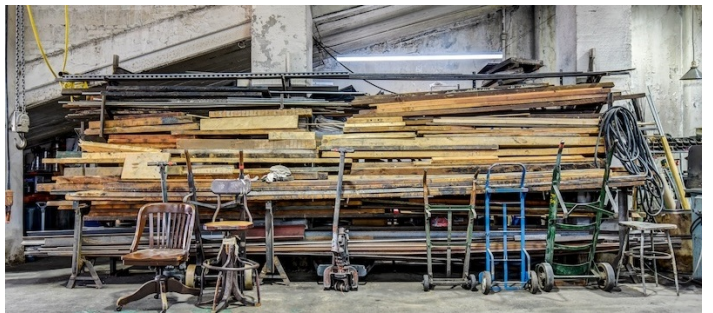
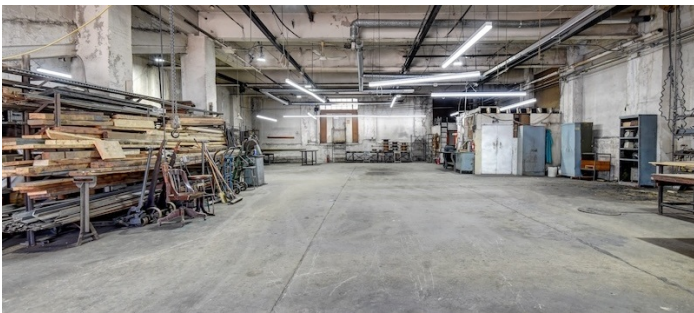
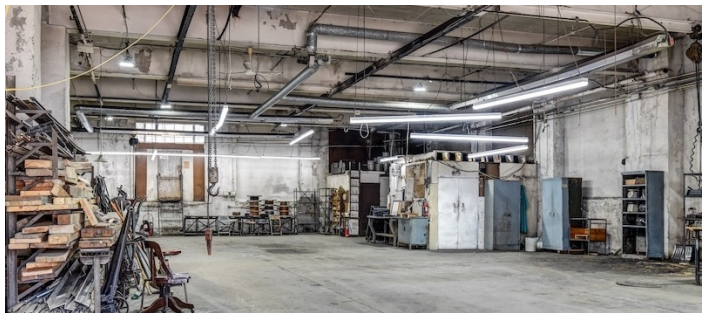
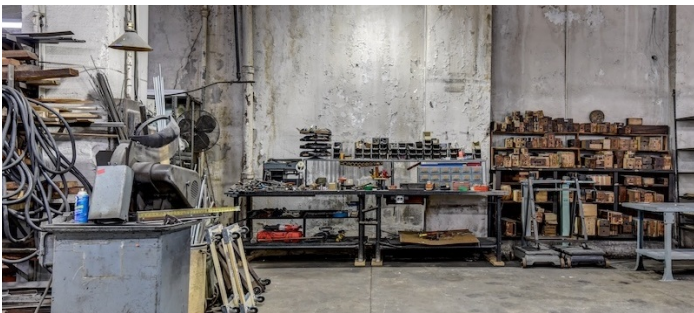
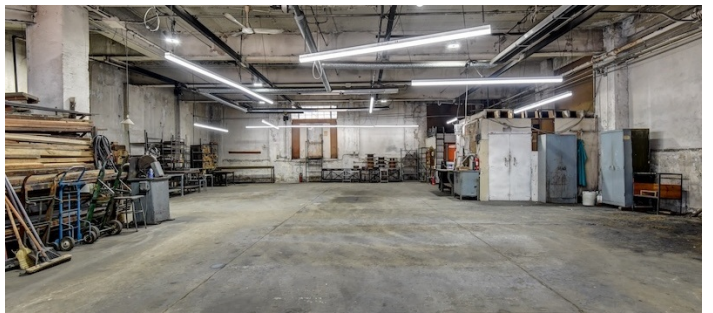
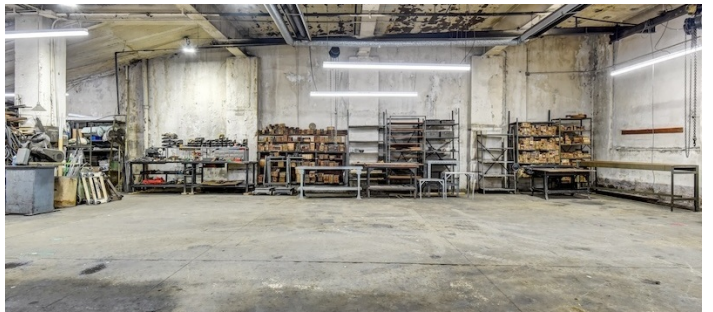




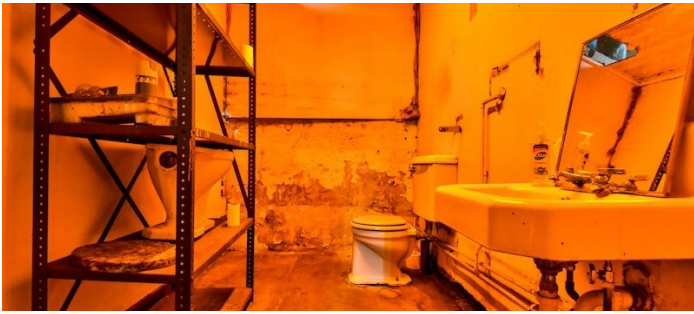
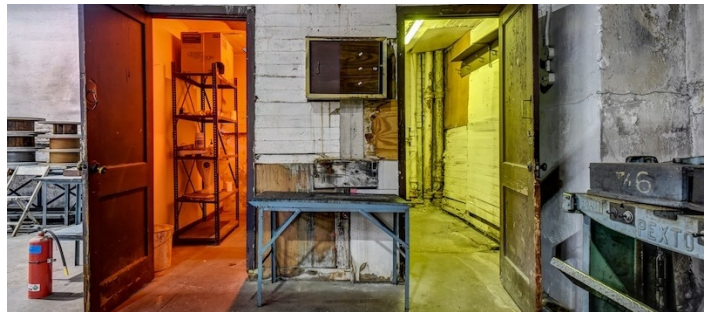
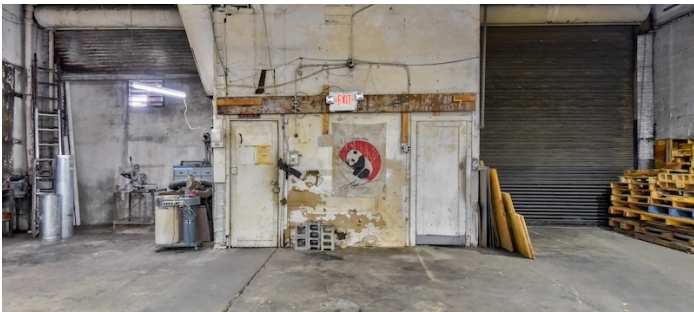
ROOF



INDUSTRIAL SHOP - 1ST FLOOR







BOILER ROOM

