

 LOCATION

Brooklyn, NY 11205

 TAGS

Balcony, Bathroom, Bedroom, City View, Fence, Fireplace, Floor to Ceiling Windows, Garden, Kitchen, Living Room, Modern Contemporary, Ping Pong Table, Rooftop, Staircase, Staircase Ext, Stoop, Terrace Patio, White Brick Wall, White Spaces, Wood Floor

 SPECS

1,200 sq ft per floor (4 floors)
11' ceiling height - parlor level
9' ceiling height - 2nd floor

 CATEGORIES

* In the Zone, Apartment, Loft, Townhouse

Notes

Extra wide (23.5 feet) Modern Townhouse on a two-way street in Brooklyn's Clinton Hill area. Wide front doors for easy access and loading of equipment. All white-walls and light-color floor interior, tons of natural light with floor to ceiling windows (and accordion glass doors) with contemporary art throughout (there is pre-permission for art to be used in shoots).

House is 5,200 square feet with four floors plus a roof deck. Ceilings on parlor level are 11 feet and 9 feet on the 2nd floor. There are six bedrooms (a larger master with one wall of accordion floor to ceiling windows) and 4 different style baths, one of which is a large, marble modern bathroom with glass shower and large unique tub great for filming. There is a clean, dry, open basement with exterior and interior access for storing gear or crew. House was newly built in 2017. Can make separate apartment available as Green Room for talent.

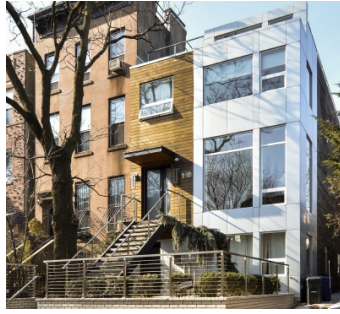
Parlor floor is an open floor plan (50 ft x 23.5ft), with a modern kitchen that opens to a deck via a wall of accordion windows that look to back yard and bamboo. There is also a 20 by 25 ft backyard.

Dining area includes a large Saarinen tulip marble table and a living room area with gas fireplace. Modern kitchen with white Cesar stone counter, Subzero and Wolf appliances. The front doors open wide (4+ feet) for easy access to bring in equipment. House is on a two-way street. There is usually parking on the street too, and lots of parking one block away under the I-278 raised highway. Lots of visually nice townhouses on the street, and even clapboard houses from the middle 1800s.

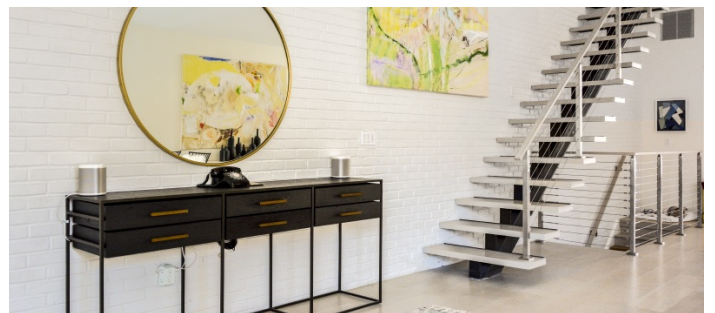
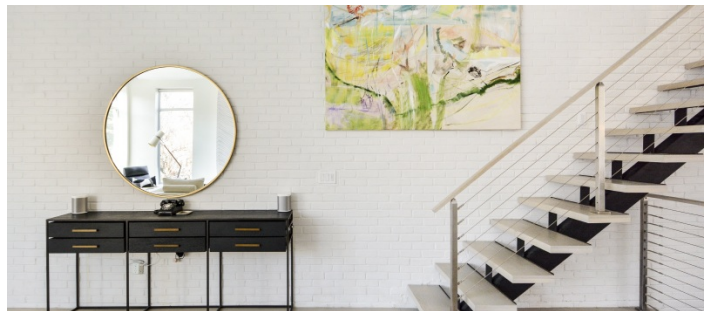
House is close to both Brooklyn Bridge and Manhattan Bridge. Subway stop (G) is three blocks away. Less than half a block to delis and restaurants. One block from I-278 and not more than 0.5 from onramp/exit. House is 2 blocks from Brooklyn Navy Yard and Steiner Studios. Easy to work with Owners.

Restrictions:

No painting or nailing in walls. No shoes on rugs.



PARLOR LEVEL - 1ST FLOOR









2ND FLOOR

