

 LOCATION

Brooklyn, NY 11237

 TAGS

Bathroom, City View, Distressed Patina, Elevator, Empty, Exposed Beam, Graffiti, Kitchen, Raw Industrial, Rooftop, Staircase, Wallpaper, White Spaces

 SPECS

6,000 sq ft

5 floors

15-20ft ceiling height

 POWER

600 amps (main box in basement)

 CATEGORIES

* In the Zone, Artist Studio / Gallery, Loft, Office, Ro Top, Warehouse / Factory / Industrial

Notes

This large commercial space is currently available for film and photo productions of any size. The building — a former tile board factory built in 1931 — is just steps away from the L train and boasts four floors (each 6000+ sq. ft), an expansive basement, and a roof with sweeping views of Manhattan.

Each floor has a different layout: the basement is mostly windowless, open industrial space; the first floor still has a co-working space layout from the previous tenant, with individual, walled office cubicles. The other three floors are broken into rooms of varying sizes but generally have high ceilings, exposed plumbing and ventilation, and plenty of natural light.

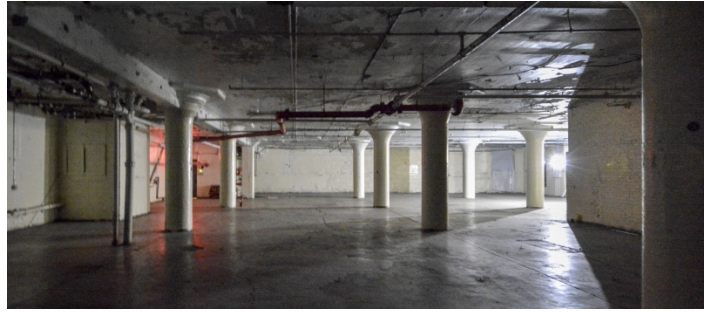
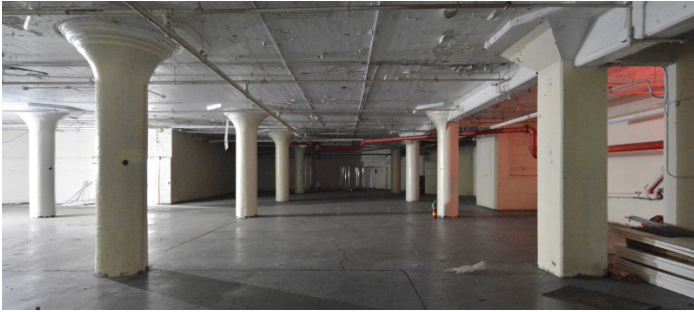
Certain units feature loft build-ins and fully functional kitchenettes (stainless steel sink, oven, gas stove, dishwasher, fridge, etc.). There is also a gated parking lot adjacent to the building.

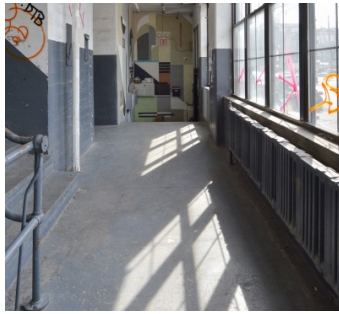
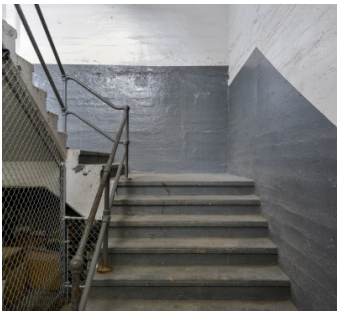
Restrictions:

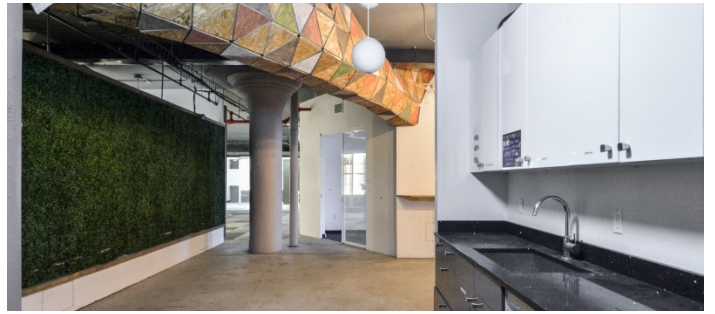
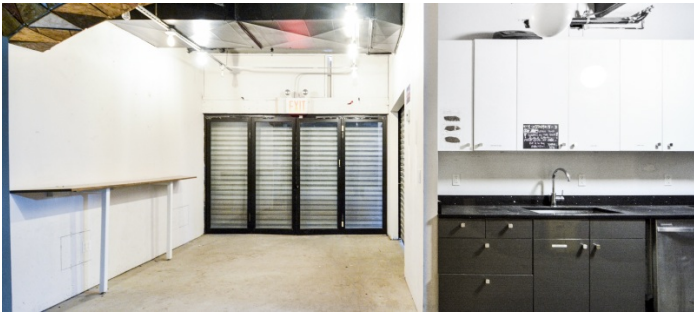
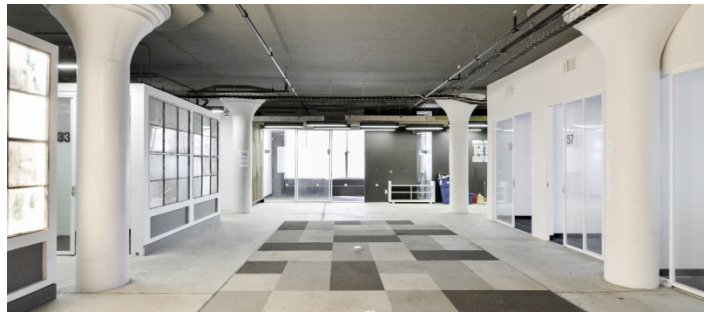
No large events allowed on site.

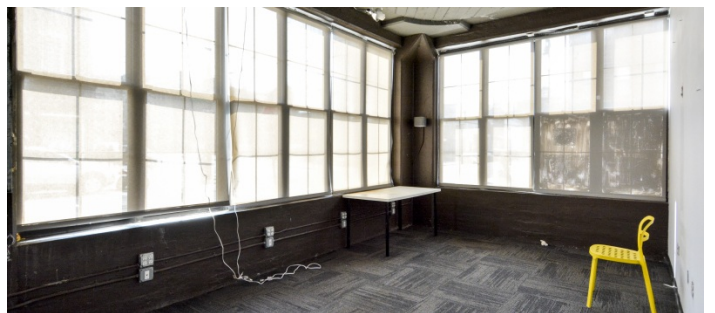
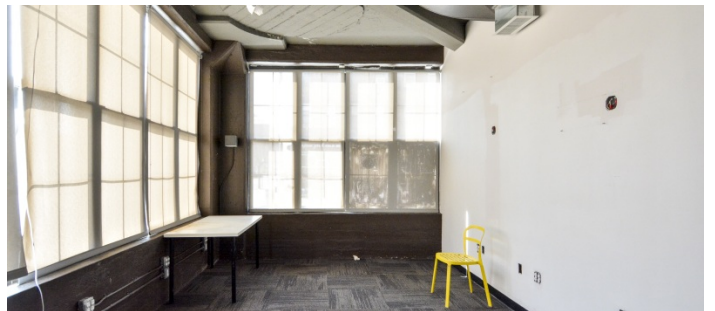
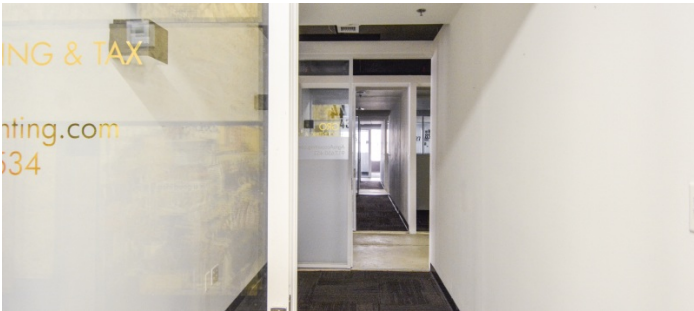
Restricted hours for shooting 2am to 6am.

No painting or nailing in walls without first discussing.



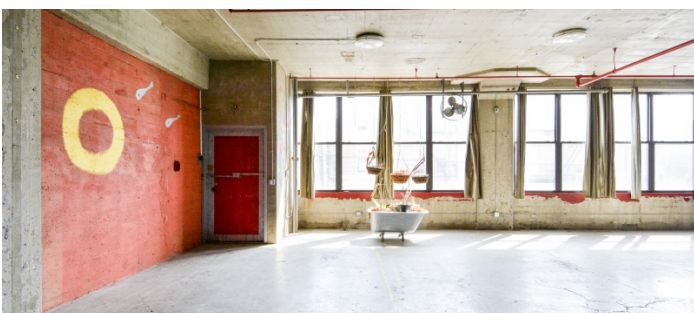
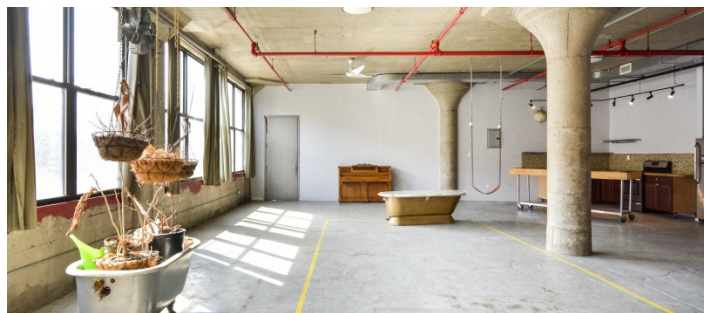
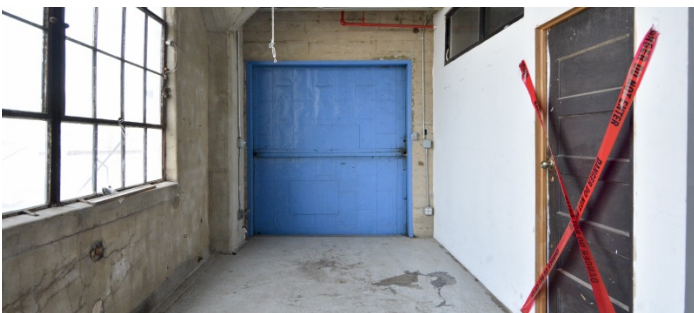
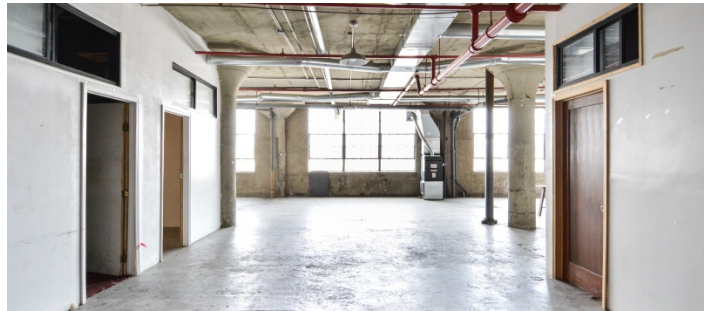
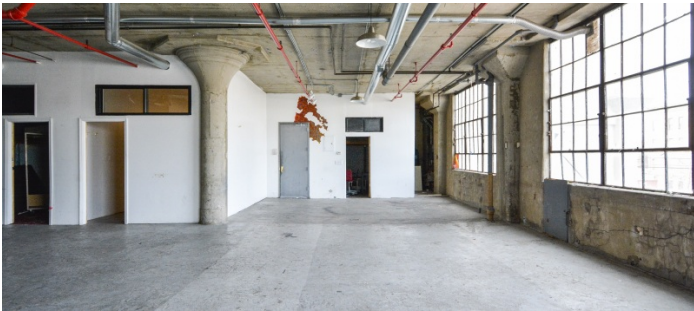
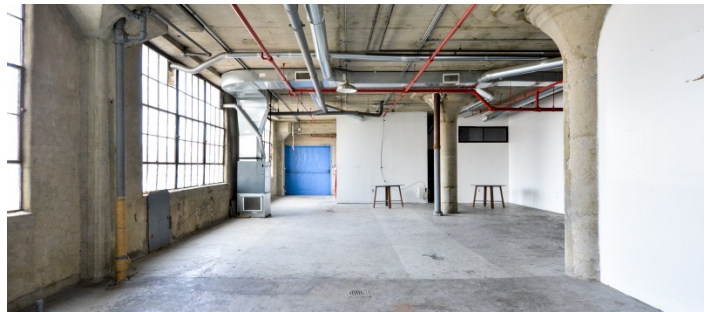


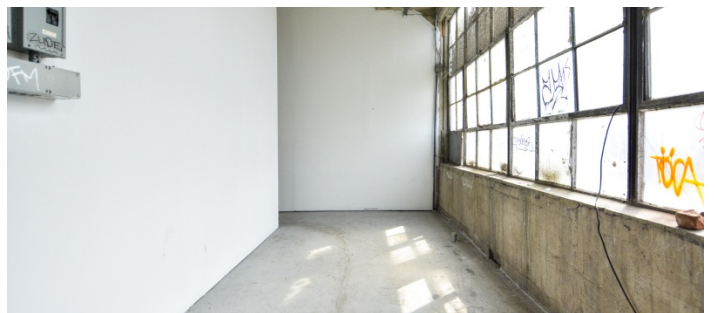
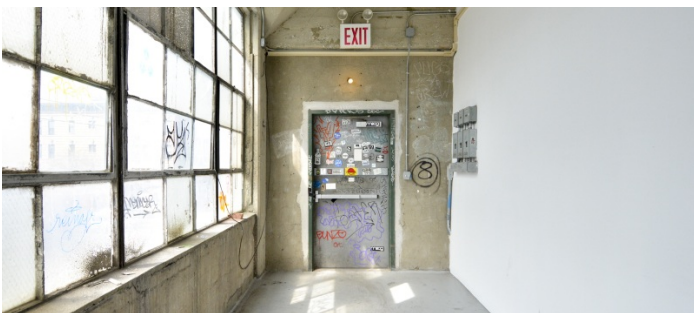
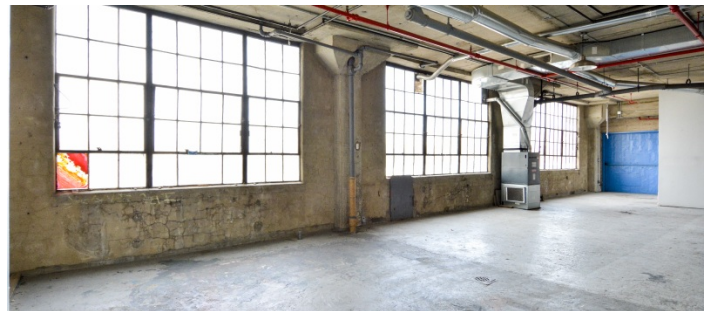
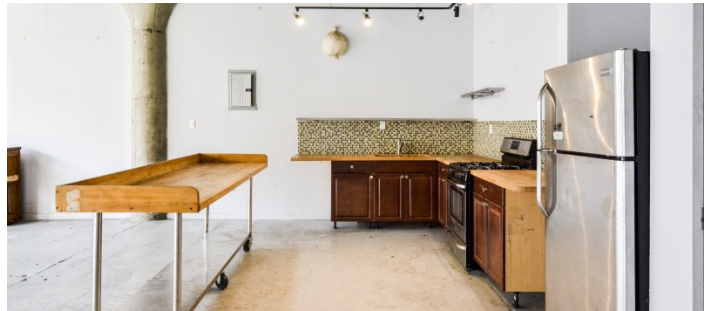
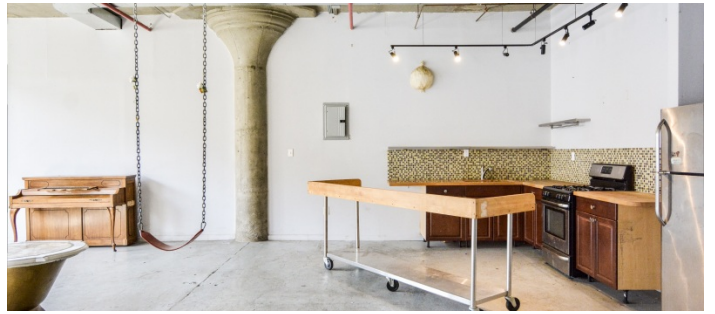
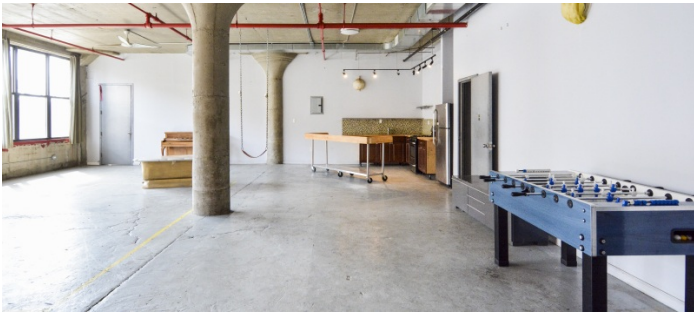




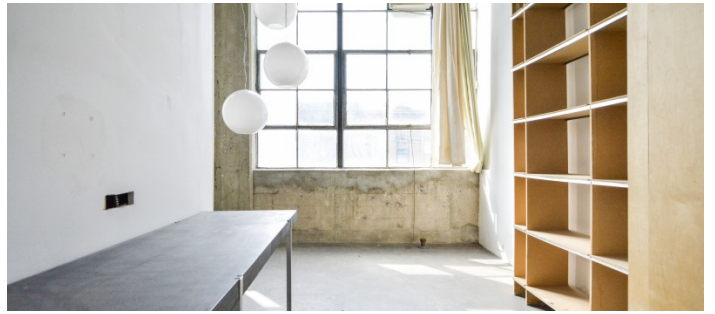
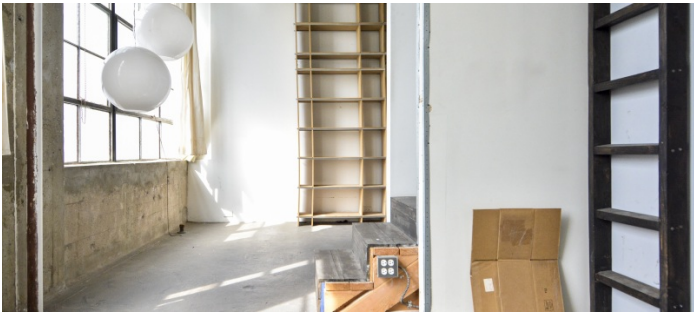
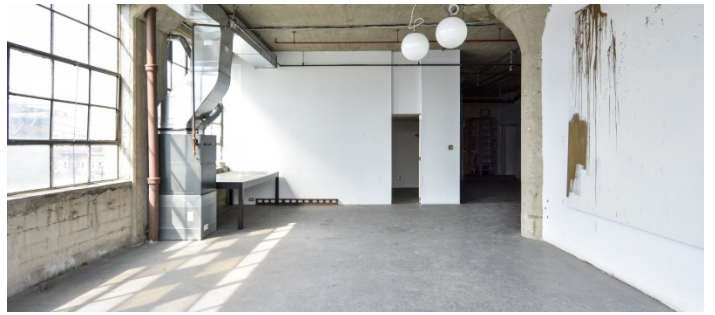


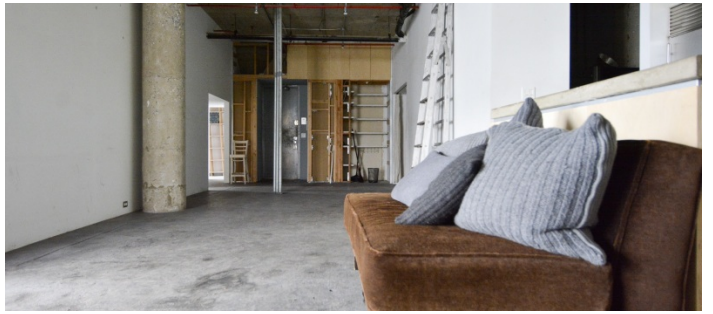
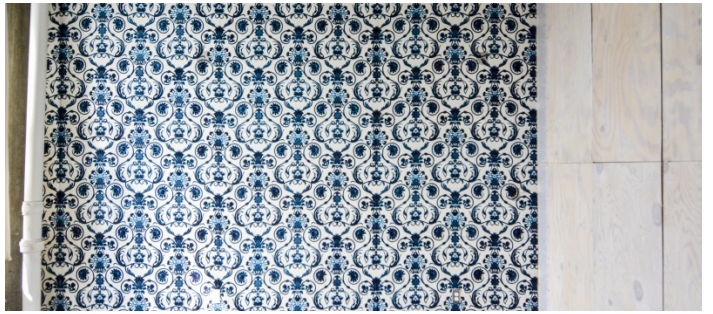
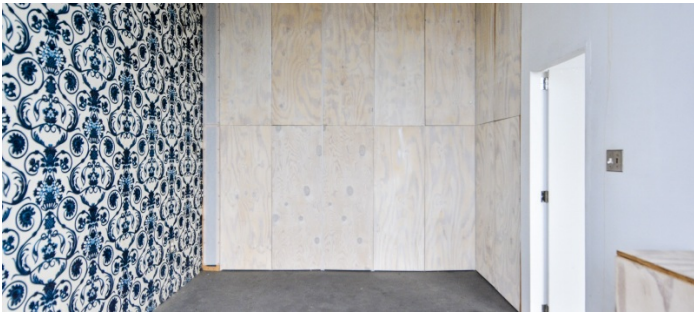
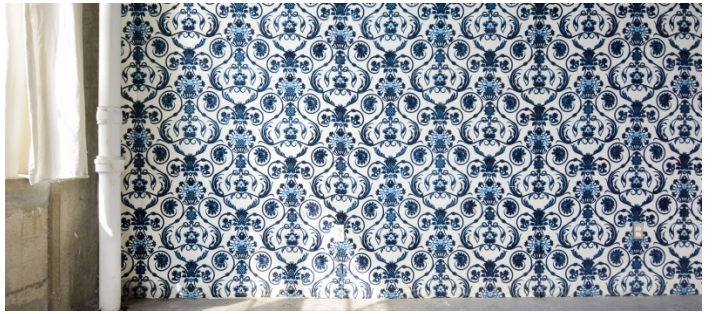
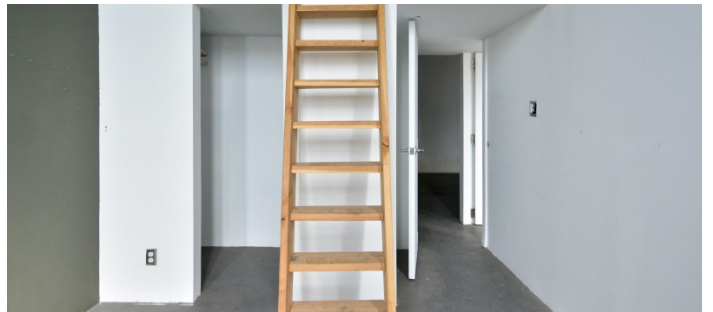


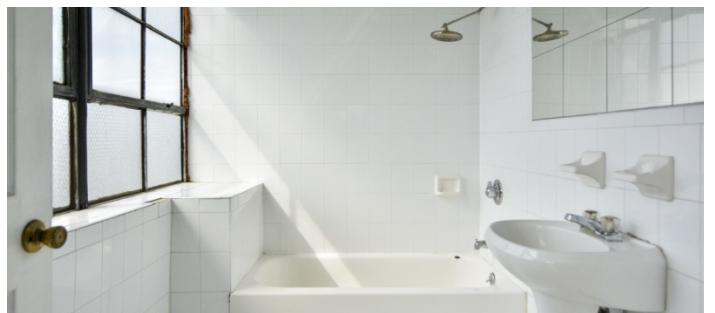
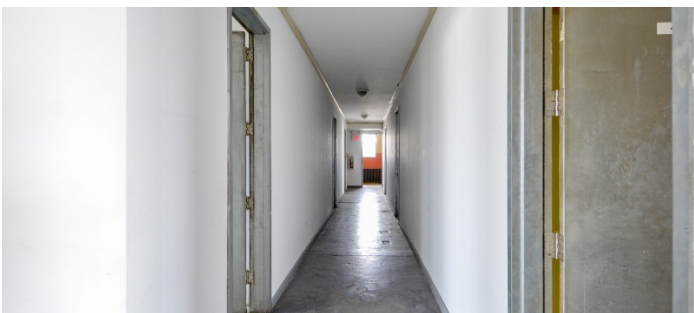
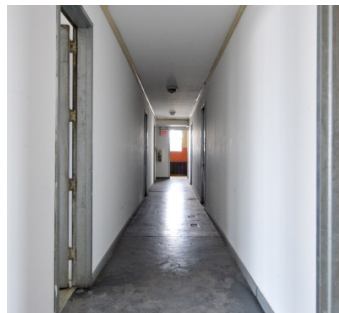
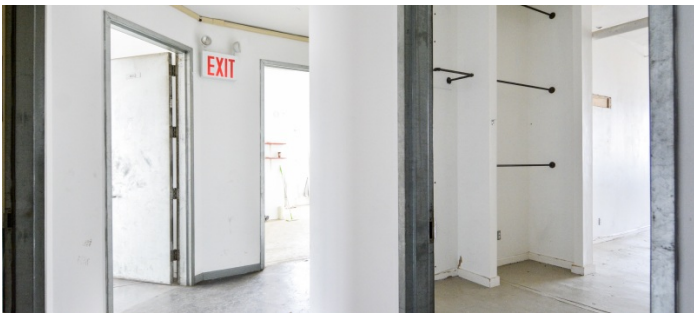
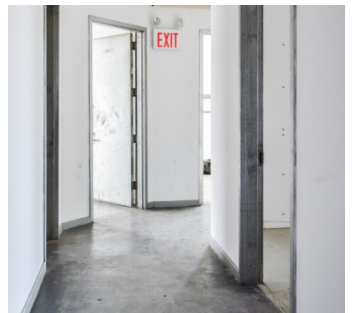
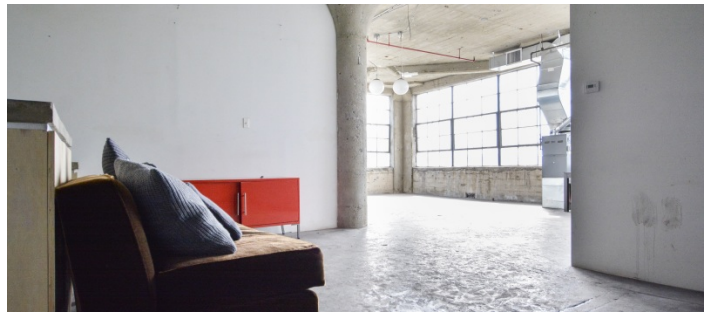






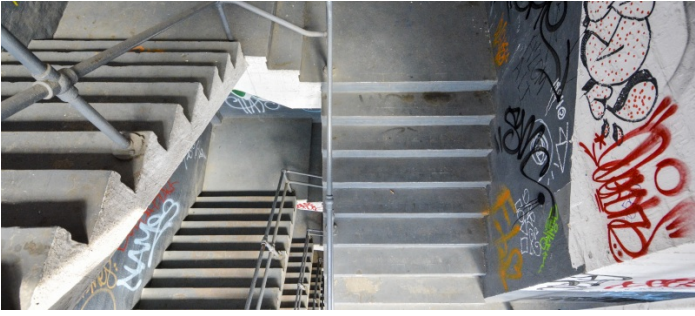


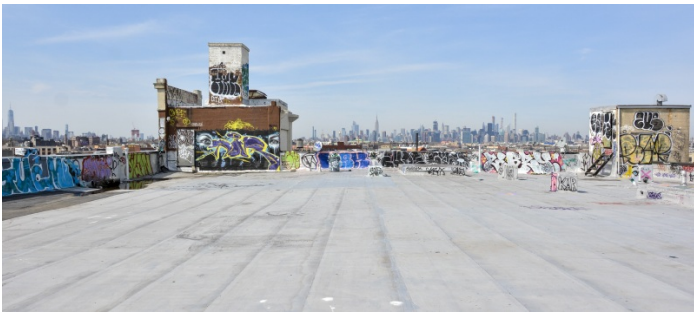


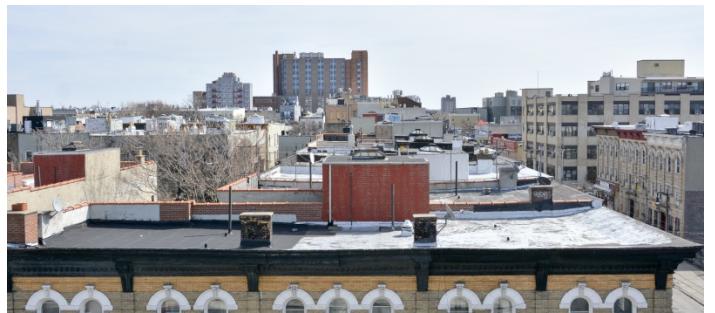
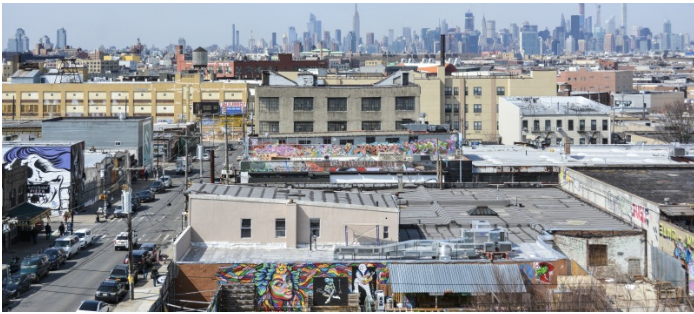
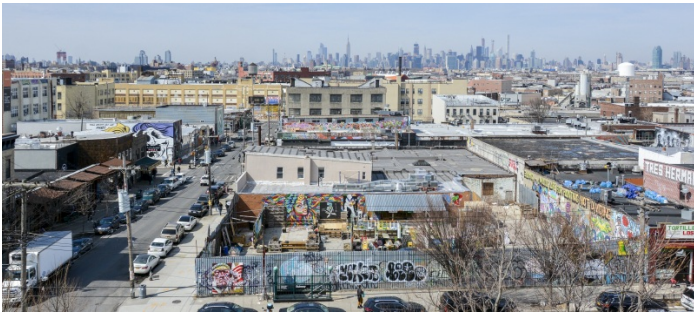












EXTERIOR

