

2ND FLOOR - VIEW FULL DETAILS BELOW

 LOCATION

Brooklyn, NY 11221

 SPECS

830 sq ft - lower level

730 sq ft - upper level

100 sq ft - terrace

 TAGS

Balcony, Bathroom, Bedroom, Deck, Eclectic Quirky, Exposed Brick, Fireplace, Kitchen, Living Room, Modern Contemporary, Skylight, Staircase, Stoop, Terrace Patio, Wallpaper, White Spaces, Wood Floor

 CATEGORIES

\* In the Zone, Apartment, Brownstone, Duplex

## Notes

Recently renovated 1890 Brooklyn brownstone located on a tree-lined street in Bed-Stuy. The interior is light and modern. The location is the upper duplex in the brownstone and has classic front entry door, iron railings, outdoor lantern

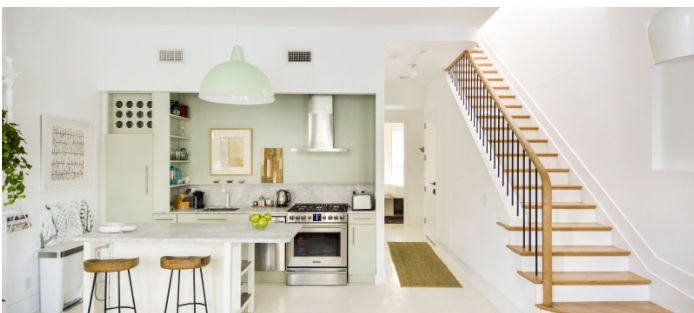
Arrival is up the brownstone steps into a foyer which has one exposed brick wall that continues up the stairs to the duplex. The duplex first floor has two bedrooms facing South, a central bathroom with shower, and an open plan living/dining/kitchen. This area faces North and has three tall windows in it. The second floor has a skylit stair, three bedrooms (two South-facing, one North-facing), a South-facing terrace, and a skylit bathroom. There is a skylit corridor that connects all top floor rooms.

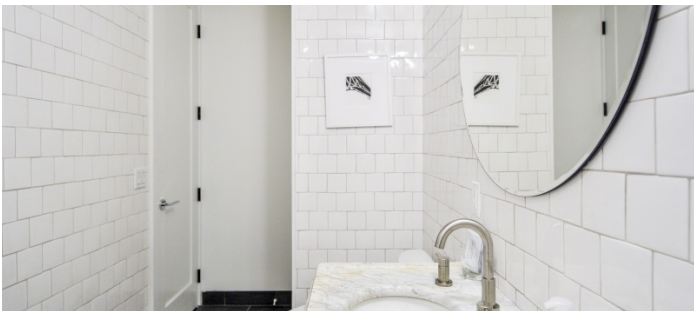
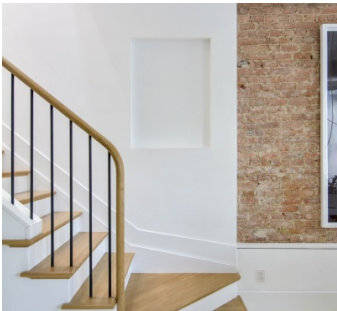
The floors on both levels are all poured white epoxy. The stairs are white oak. The terrace walls are dark brick, and there is a large dining table and wood floor. There is an outdoor light on the terrace.

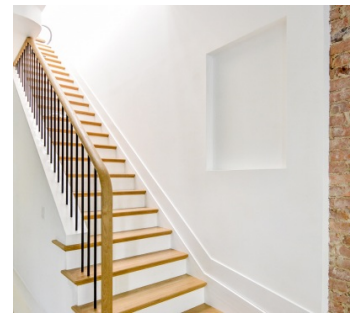
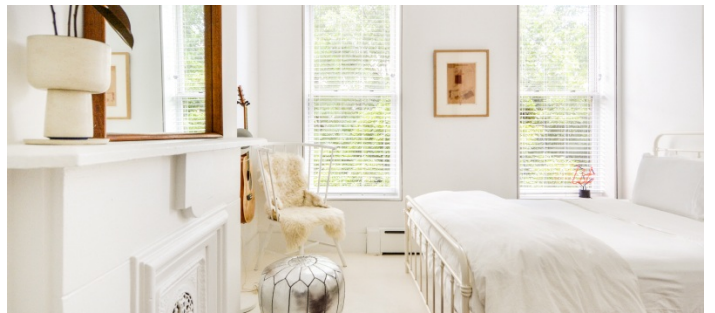
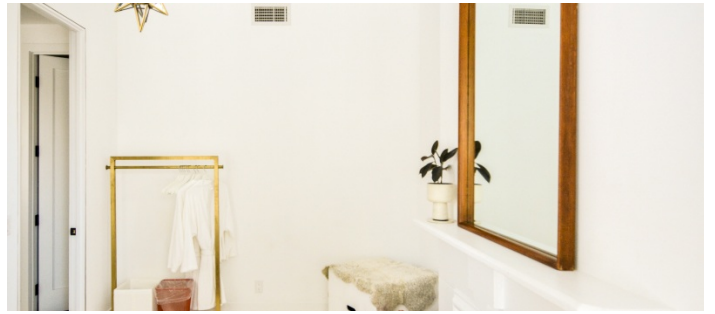
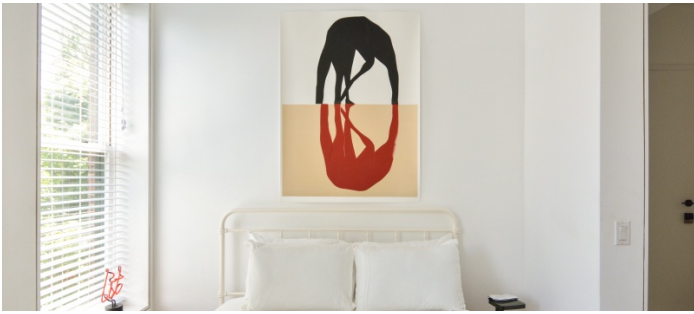
1560 square feet total (830 lower, 730 upper plus additional 100 or terrace) - 2 floors; ceiling height varies from 9' upstairs and bedrooms to 11' living room.

**Restrictions:**

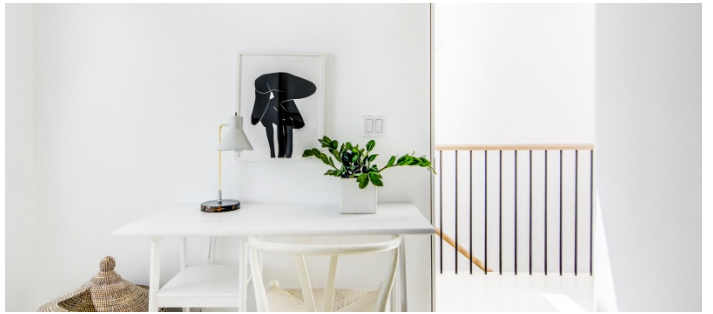
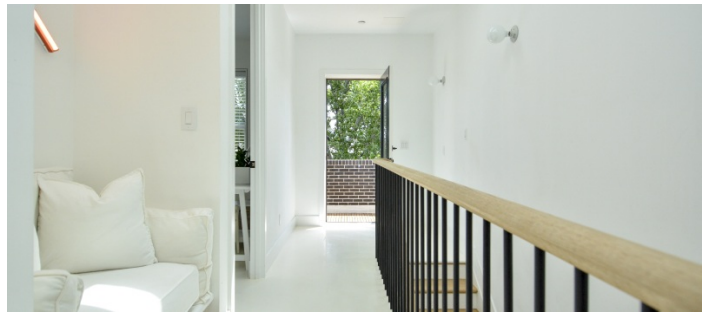
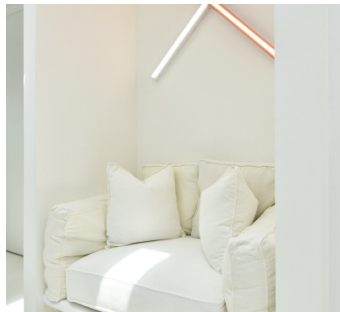
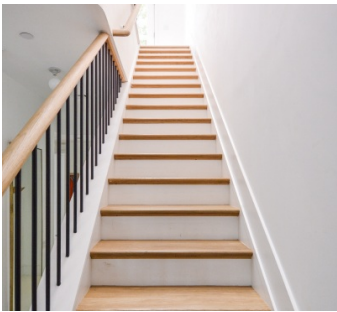
Painting or nailing in walls is possible as long as returned to original condition.

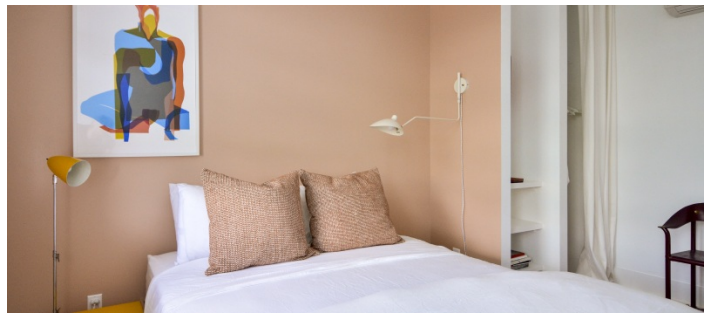
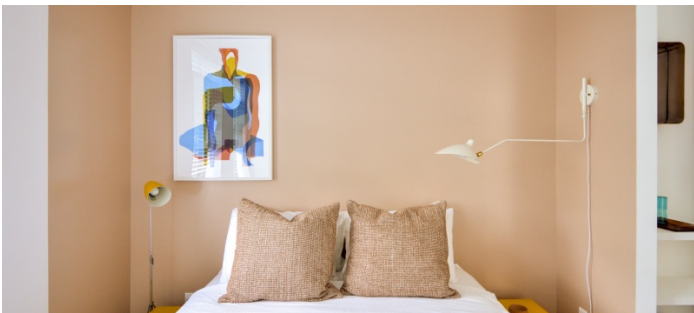


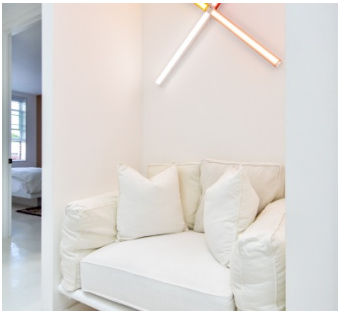














3RD FLOOR BALCONY

