

 LOCATION

Montclair, NJ 07042

 DISTANCE FROM NYC

22 miles

 TAGS

Backyard Lawn, Bathroom, Bay Window, Bedroom, Clawfoot Tub, Exposed Beam, Fireplace, Garage, Garden, Kids Room, Kitchen, Living Room, Modern Contemporary, Piano, Staircase, Stone Wall, Suburban, Terrace Patio, Wood Floor

 SPECS

1 acre  
5,500 sq ft  
10'-12' ceiling height

 CATEGORIES

\* In the Zone, House

## Notes

Magnificent architectural detail describes this one-of-a-kind Dudley Van Antwerp Craftsman Colonial 5,500 SF, 15 rooms, 7 Baths Mansion. Dramatic, two-story entry with brick fireplace, copper hood, oak beamed ceiling.

Details abound include leaded and stained glass, high ceilings, window seats, wood floors, mosaic tile. The fabulous white gourmet kitchen has stainless steel appliances, six-burner Electrolux gas stove, granite counters, separate eating area, and a butler's pantry.

Family room, formal dining room, four wood burning fireplaces, sunroom and a library complete the first floor. Second floor boasts four large, corner bedrooms and three full baths. Third floor includes three bedrooms, two full baths and two offices.

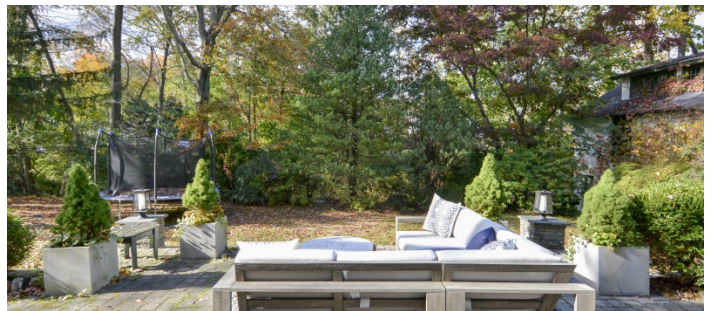
Finished basement with rec room, laundry room and storage. Ductless, two unit air conditioning on first floor. Beautifully landscaped grounds include a stone patio and an architecturally designed rock garden and waterfalls. A historically designated house, the owners have blueprints from the original design. Close to New York direct train, bus and Watchung Plaza.

There is a church across the street for big shoots' parking and holding. Owners have the info and a relationship with them.

**Restrictions:**

Prefer no shoes inside depending on weather.

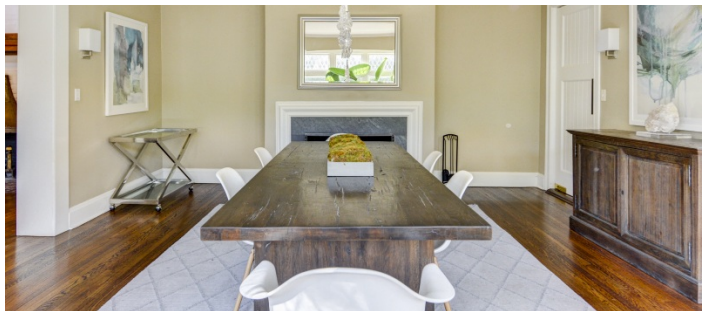


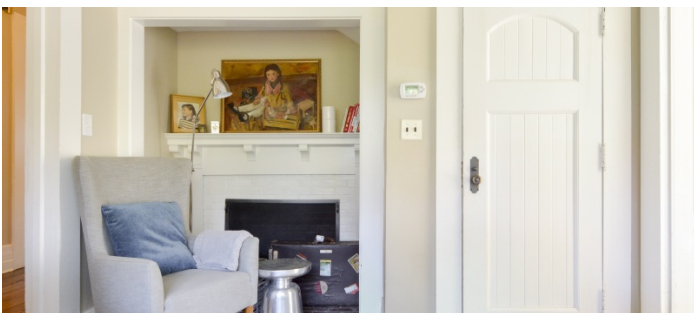




1ST FLOOR





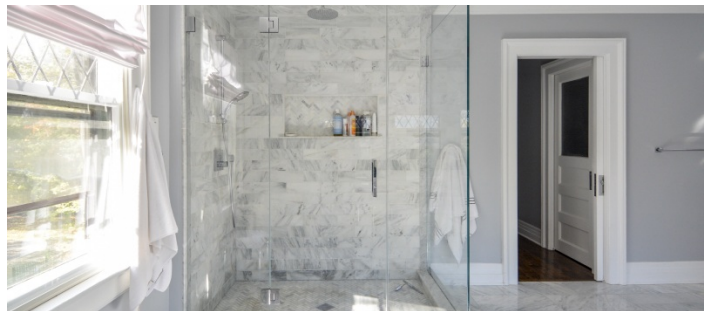
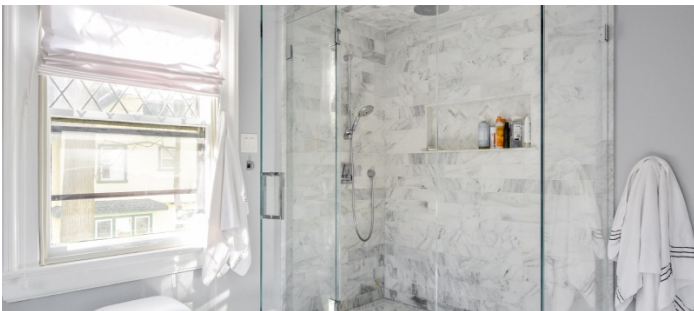


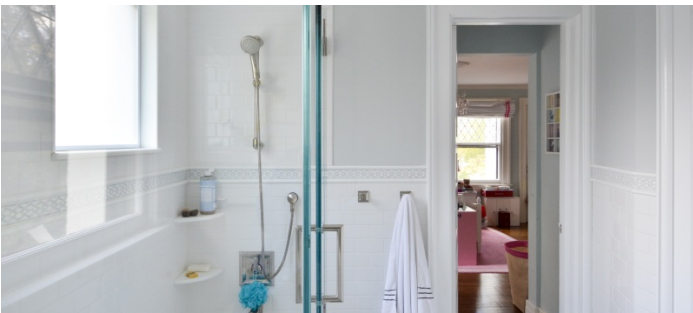




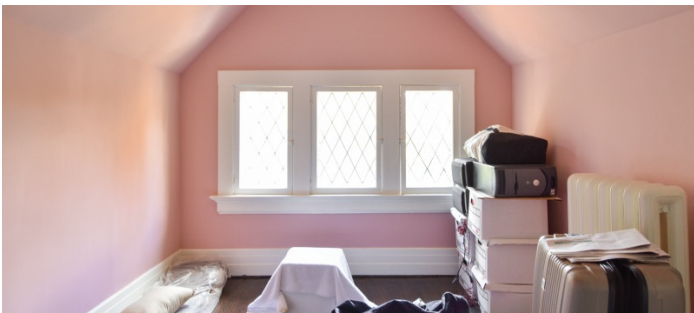


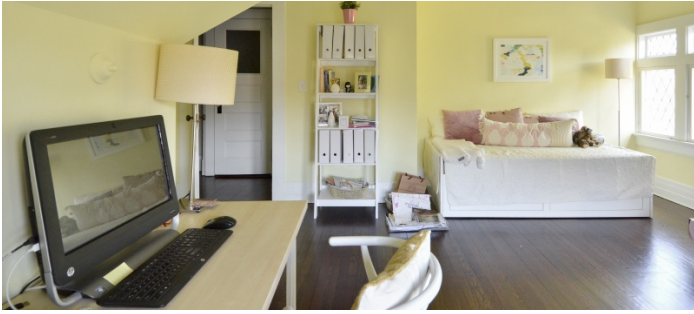
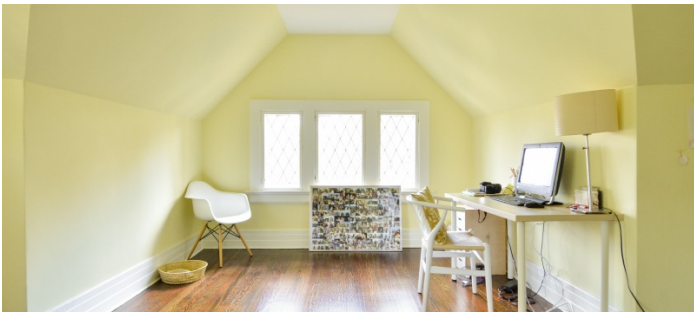














FAMILY ROOM + MUD ROOM





GARAGE

