

3RD FLOOR - VIEW FULL DETAILS BELOW

LOCATION

Long Island City, NY 11101

TAGS

Balcony, Bathroom, City View, Concrete, Empty, Kitchen, Living Room, Modern Contemporary, Rooftop, Terrace Patio, White Spaces

SPECS

3rd Floor - 5000 sq ft
3rd Floor Terrace - 6000 sq ft
PH - 2000 sq ft
PH Rooftop - 3000 sq ft

POWER

400 Amp (3rd Fl) + 200 Amp (PH) three phase dedicated

CATEGORIES

* In the Zone, Event Space, Loft, Roof Top, Studio

Notes

7,000 square feet of indoor and 9,000 square feet of outdoor raw event space with an abundance of natural light and clean modern finishes. Panoramic views of the Manhattan skyline and the Queensboro Bridge. High ceilings and large open spaces make it ideal to host events and photo/video shoots. Two green rooms, central heat and air conditioning.

The venue can be rented in its entirety or by each individual floor.

3rd Floor - 5,000 sq ft interior with 6000 sq ft terrace overlooking New York City. Maximum capacity of 300 for a seated dinner and dancing or 500 for a cocktail-style event. 400 Amp three phase power dedicated to this floor.

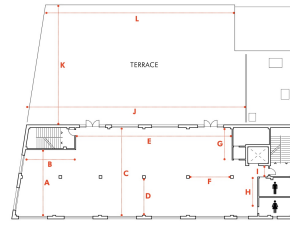
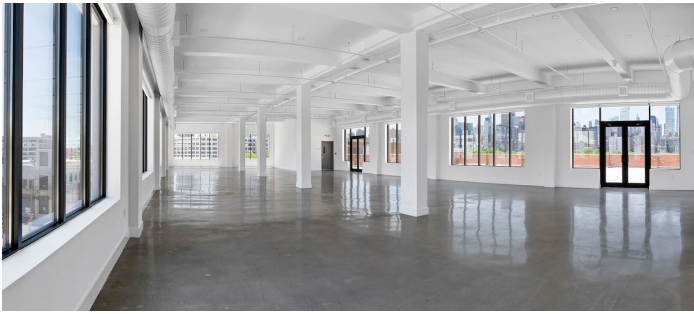
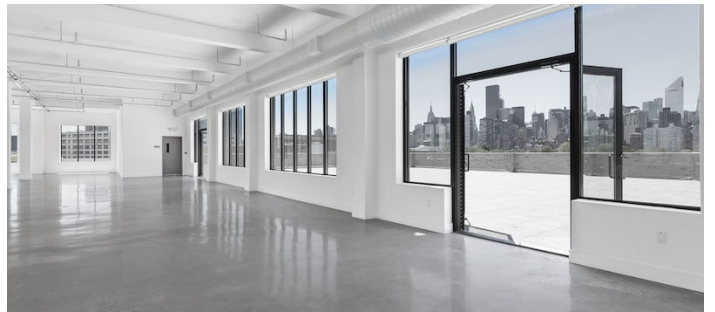
Penthouse (5th Floor) - 2,000 sq ft interior with 3000 sq ft rooftop terrace with panoramic city views. Maximum capacity of 75 for a seated dinner and dancing or 150 for a cocktail-style event. 200 Amp three phase power dedicated to this floor.

Amenities: lobby, large coat check in lobby, 2 dressing rooms/green rooms, prep kitchen, elevator, wifi, handicap accessible bathrooms, large windows provide natural light, powered window shades, tables - 60" rounds and 8'x36" rectangular.

Restrictions:

We do have a list of recommended vendors, available upon request.

Have exclusive vendors for furniture rental and for tenting.



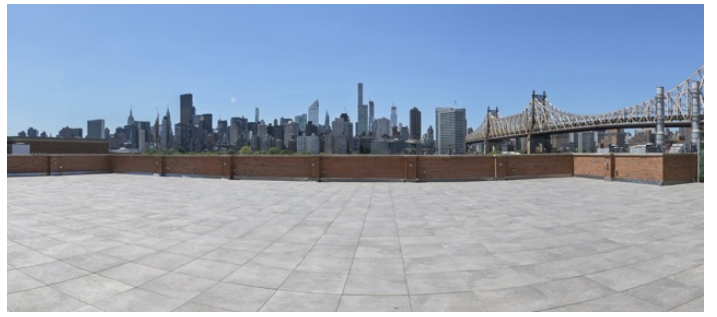
3FL

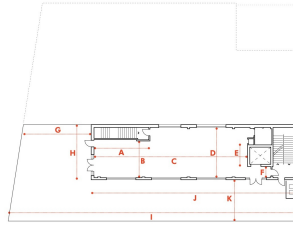
ceiling Height | 34'

⊙ ELECTRICAL OUTLETS

- A 30' 8"
- B 22' 2"
- C 40' 11"
- D 17' 5"
- E 71' 11"
- F 19'
- G 15'
- H 13' 9"
- I 22' 2"
- J 50' 10"
- K 64' 5"
- L 85'

3RD FLOOR TERRACE





5FL

Ceiling Height | 14'
 ○ ELECTRICAL OUTLETS

A	22' 2"	G	30' 6"
B	16' 6"	H	24' 9"
C	65"	I	129' 8"
D	22' 7"	J	90' 6"
E	10' 4"	K	16' 7"
F	5'		



