

STUDIO A - 800 SQ FT - VIEW FULL DETAILS BELOW

 LOCATION

Brooklyn, NY 11237

 TAGS

Exposed Brick, Modern Contemporary, Wood Floor

 SPECS

Square Footage A: 800

Square Footage B: 700

Square Footage C: 500

Square Footage D: 800

 POWER

40 amps - wall outlet only - no distribution box

 CATEGORIES

* In the Zone, Event Space, Loft, Studio

Notes

Located in Bushwick / East Williamsburg, featuring four open loft photography studios in a clean, newly renovated building. Each studio is wheelchair accessible via elevator and features 12' ceilings, hardwood floors, large windows, professional studio equipment, and seamless paper (white/black/grey) that comes all-inclusive at an affordable hourly rate.

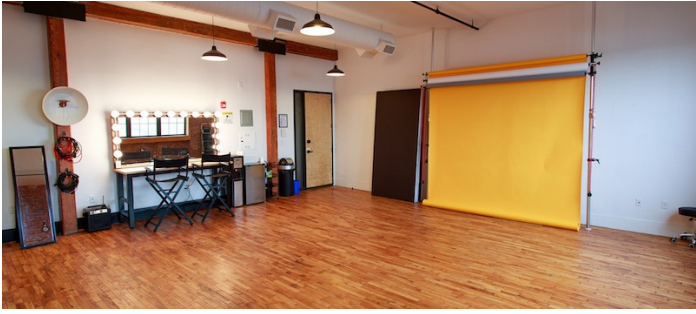
No fee for bringing in outside equipment.

Each studio has 40 amps total available (2 circuits with 20 amps each). Wall outlet only - no distribution box

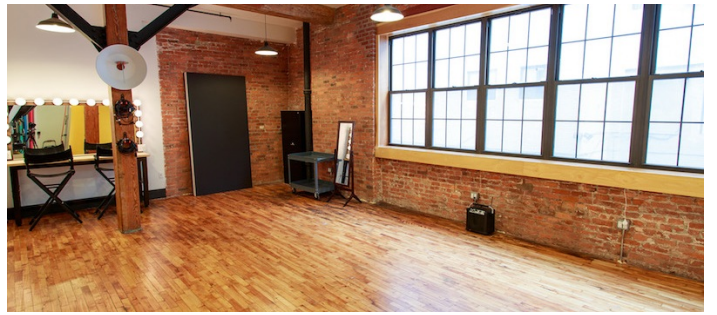
- Kitchen and break room access
- Passenger + freight elevator
- Full control of thermostat (AC and heat)



STUDIO B - 700 SQ FT



STUDIO C - 500 SQ FT



STUDIO D - 800 SQ FT

