

WEST STUDIO - 3,700 SQ FT - FULL DETAILS BELOW

 LOCATION

San Francisco, CA 94110

 DISTANCE FROM NYC  
2,907 miles

 TAGS

Living Room, Modern Contemporary, Skylight,  
Staircase, White Spaces

 SPECS

West Studio 3,700 sq ft  
East Studio 3,200 sq ft

 POWER

110v, 20A breakers. West=~100A, East = ~70A

 CATEGORIES

Event Space, Studio

## Notes

Bespoke photo studios with unique style and amenities.

West Studio = 3,700 square feet with 40' cyclorama, private conference room and HMU area. Load-in from street level via rollup door. Interior vehicle access.

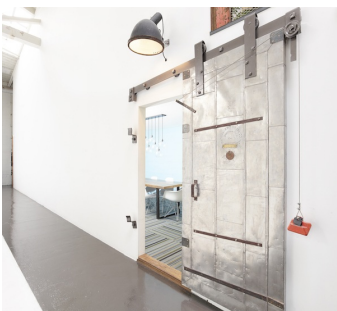
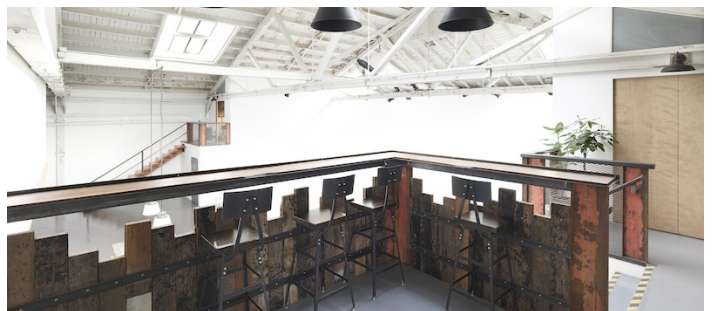
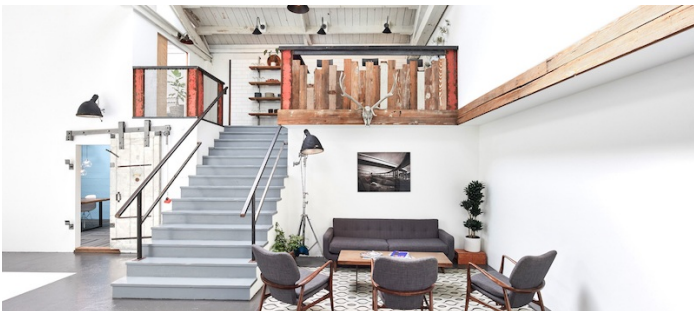
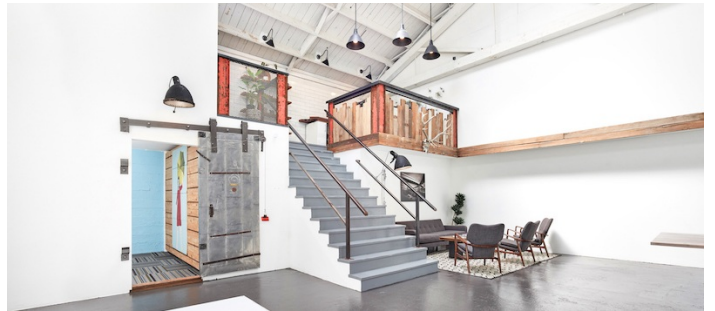
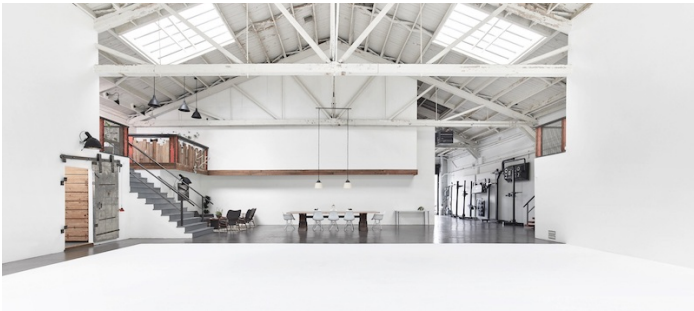
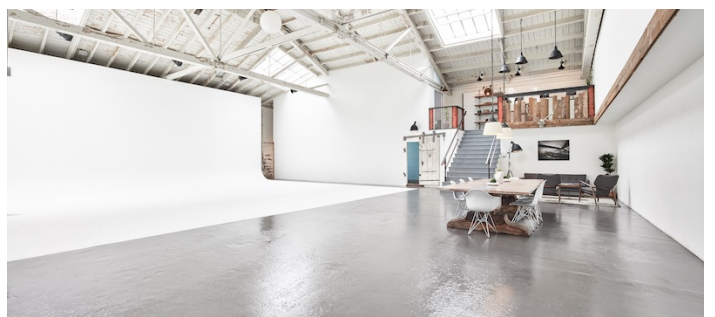
East studio is 3,200 square feet with no cyclorama or private rooms. Load-in from street level via rollup door. Interior vehicle access.

The studios can be "combined" via an 8x8' doorway which swings 180 degrees wide open. Max occupancy per studio is 49 people, up to 98 when studios are combined. Both studios have 2 rest rooms and a kitchenette. No full kitchen on-site.

Not a sound stage and cannot guarantee suitability for productions requiring sound recording. We recommend site visits prior to booking, especially when sound is a consideration.

### Restrictions:

Nailing or painting of walls is permitted on case by case basis with manager approval - repair fee to be discussed to return to original condition.



EAST STUDIO - 3,200 SQ FT

