

 LOCATION

Greenwich, CT 06831

 DISTANCE FROM NYC

38 miles

 TAGS

Backyard Lawn, Balcony, Bar, Bathroom, Bedroom, Deck, Fence, Fireplace, Floor to Ceiling Windows, Garage, Garden, Kids Room, Kitchen, Living Room, Modern Contemporary, Porch, Staircase, Sun Room, Terrace Patio, Walk-in Closet, White Spaces, Wood Floor

 SPECS

2 acres

6,500 sq ft

9' to 16' ceiling height

 CATEGORIES

House

Notes

Single family house with open floor layout on first floor. Enter thru old stone walls and along a Belgian block-lined driveway to approach this handsome French style 1931 brick home with 2020 addition and gut renovation. Nicely sited at the top of a gentle, rolling piece of property, the park-like grounds extend over nearly two glorious acres of lawns and flowering shrubs.

The elegant front-to-back living room features a gas fireplace and two sets of French doors to the outside. The dining room offers floor to ceiling windows. A covered terrace connects the dining room, kitchen and bar with french doors on both side and a accordion door opening the length of a bar. New kitchen with high end appliances and a floating stone shelf is next to the family room with vaulted ceilings and a gas fireplace. A fireplace and a tray ceiling enhance the master suite; the other three bedrooms are en-suite.

The second floor includes 5 bedrooms, a large family/playroom with vaulted ceilings and loft, as well as a modern terrace with glass railing that overlooks the scenic backyard.

Restrictions:

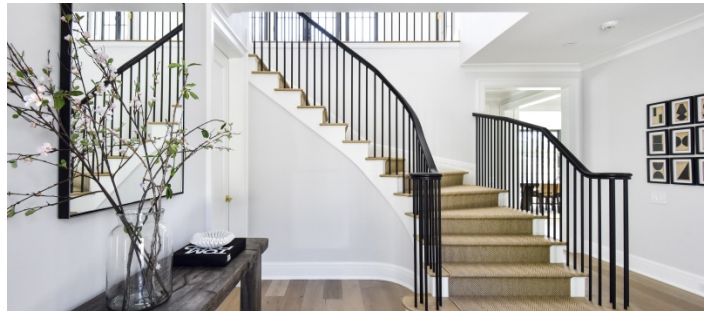
Owner permission required prior to painting or nailing in walls.





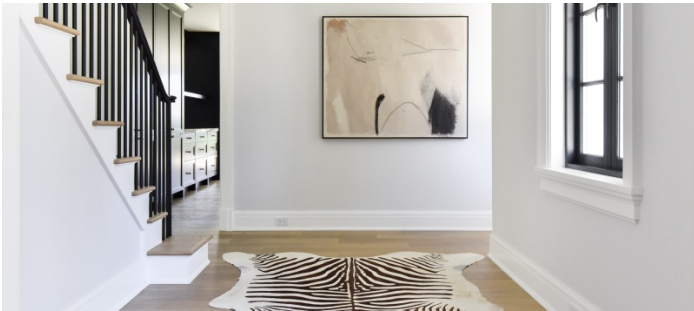
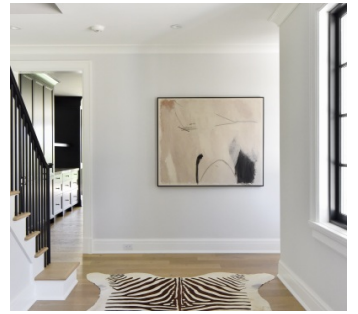


FIRST FLOOR



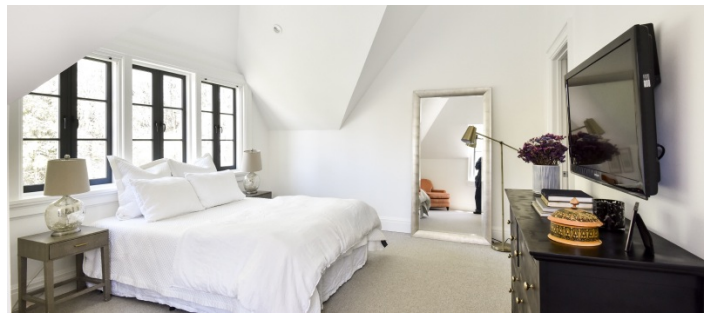
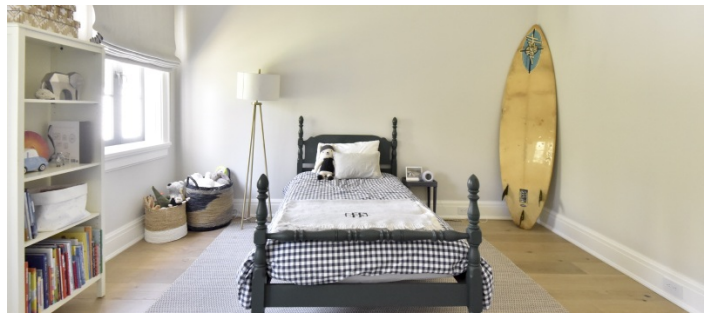
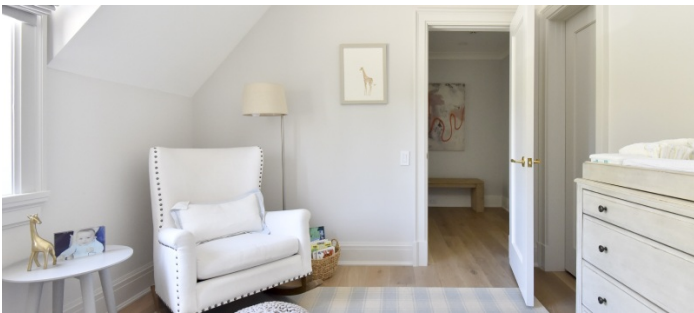
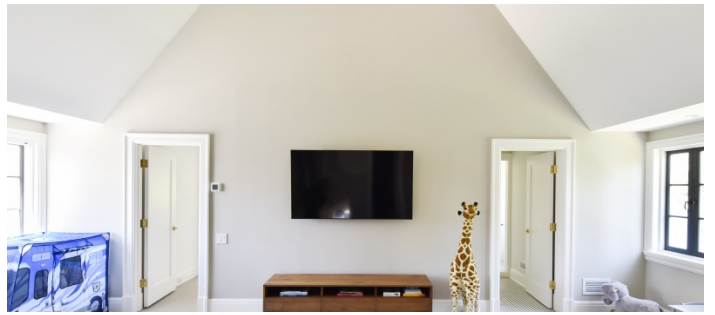


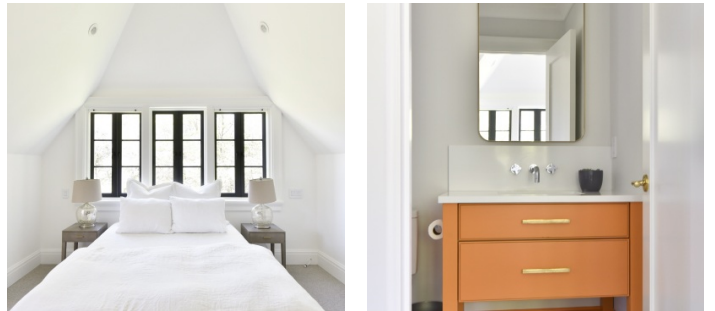




SECOND FLOOR







2ND FLOOR BALCONY TERRACE

