

 LOCATION

Rhinebeck, NY 12572

 DISTANCE FROM NYC

100 miles

 TAGS

Backyard Lawn, Barn, Bedroom, Colonial Federal, Distressed Patina, Exposed Beam, Fields, Fireplace, Garden, Kitchen, Living Room, Modern Contemporary, Rustic, Scandinavian, Staircase, Stone Wall, Terrace Patio, White Spaces, Wood Floor, Woods

 SPECS

4 acre property

Barn: 2,000 sq ft

House: 2,400 sq ft

Cocktail Capacity (Barn Int): 40

Dinner Capacity (barn Int): 20

 POWER

Barn fuse box located on 2nd floor; Main House fuse box located in basement. Amperage TBC

 CATEGORIES

Barns, Cottage, Event Space, Farm, House

Notes

Property: 4 Acre groomed property with 4 structures including main house, garage, guest cottage and barn.

Barn: Untouched barn built in late 1800's, two floors, raw. Electricity. No running water. Approximately 2,000 sq ft. Ceiling height: 12-16'.

Main House: 2,400 sq ft farm house build in 1945 with updated details. Two floors including kitchen, 1 full bath and 1 1/2 bath, living room, dining room, TV room, 3 bedrooms and covered porch. Ceiling height: 8-10'.

Restrictions:

Main House interior availability for shoots decided on case by case basis. Floor protection required. No shoes inside house. Furniture must be returned to original spot at wrap.

No painting or nailing in walls.

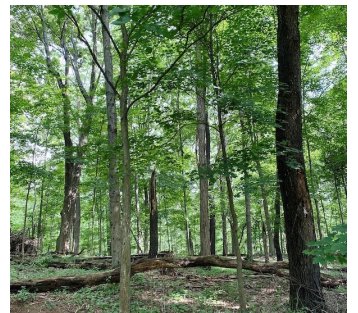
If use fireplace in main house, need fire martial on set and necessary permits.

Guest cottage interior is off limits.

Permits not required on private property but production needs to confirm what is needed upon renting.





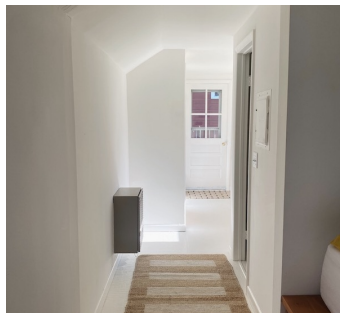








COTTAGE INTERIOR













MAIN HOUSE INTERIOR - USE APPROVED ON A CASE BY CASE BASIS

