

 LOCATION

Lloyd Harbor, NY 11743

 SPECS

32,000 sq ft

10 acres

 DISTANCE FROM NYC

47 miles

 CATEGORIES

House, Mansion

 TAGS

Backyard Lawn, Balcony, Bathroom, Beach, Bedroom, Carpet, Classic Grand, Deck, Dock Pier, Exposed Beam, Exposed Brick, Fireplace, Garage, Garden, Greenhouse, Kitchen, Library Room, Living Room, Ocean or Bay, Parquet, Piano, Porch, Rooftop, Stained Glass, Staircase, Staircase Ext, Terrace Patio, Traditional, Tudor, Wallpaper, Water View, Wood Floor

Notes

32,000 sq. ft. completely renovated Tudor brick and limestone mansion on 10 acres, overlooking Cold Spring Harbor and Long Island Sound, with a 12-car garage and 2 ½ acres of beautiful gardens.

Mansion has 3 floors, a large ballroom, solarium, squash court, dining room, 19 bedrooms, 2 apartments, kitchen, 8 fireplaces and a 12-car garage. Plenty of room for staging, catering, storage of equipment equipment and parking. Bedrooms available to accommodate crew wishing to stay overnight.

Throughout the home, the exquisite detailing and craftsmanship has been masterfully restored to its original glory including inlaid wood floors, coffered ceilings, linenfold paneling, intricate millwork, stained-glass windows and an exterior limestone relief.

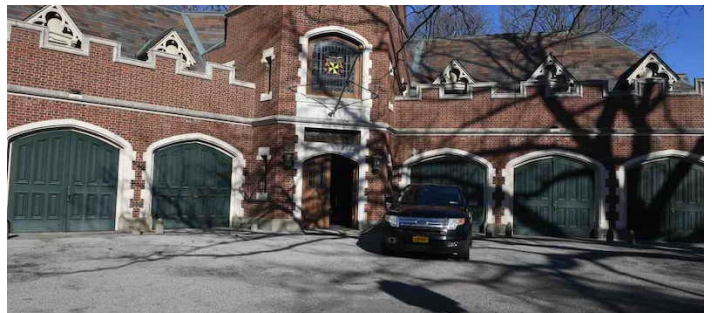
Other features: long driveway, porte-cochere, veranda and terrace with balconies facing open water, a lit staircase that leads to 1,000 feet of beach and a 160-foot deep-water dock.

Restrictions:

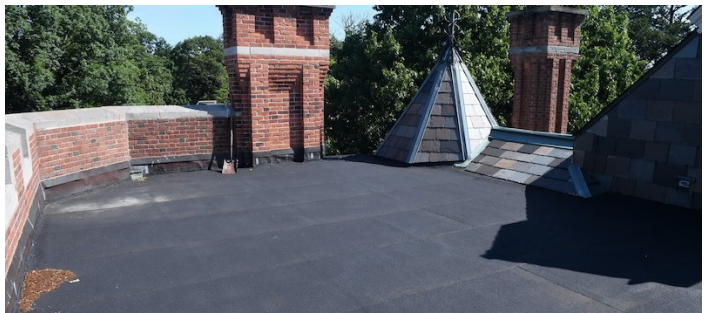
Furniture and artwork should be moved with care.

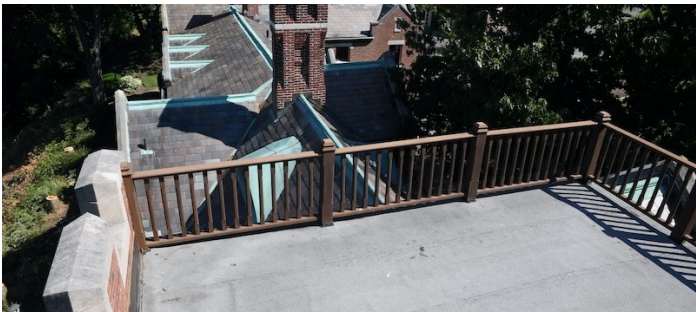
No nailing or painting of walls without receiving prior approval from owner.

Use of picture animals requires prior approval from owner.





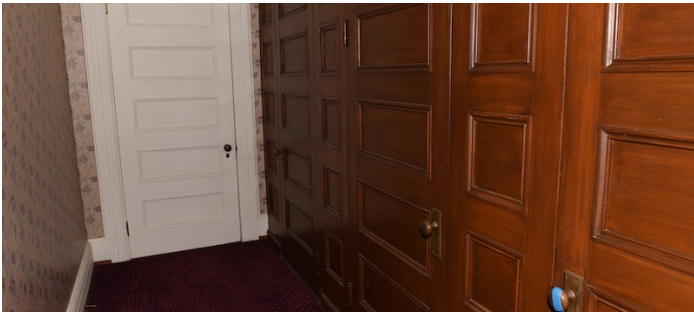




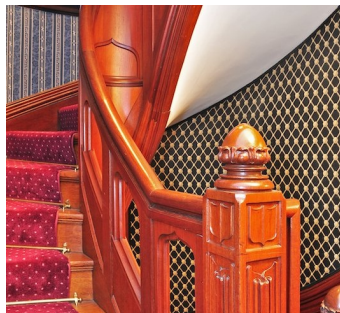
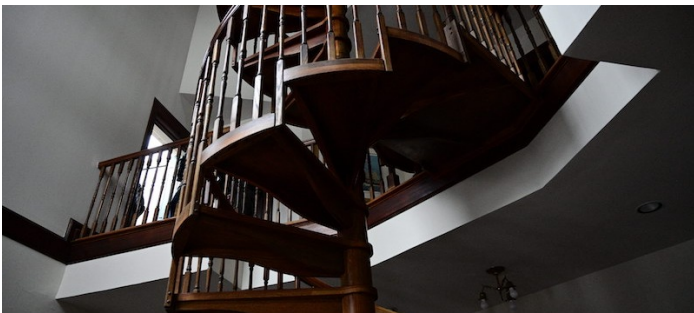




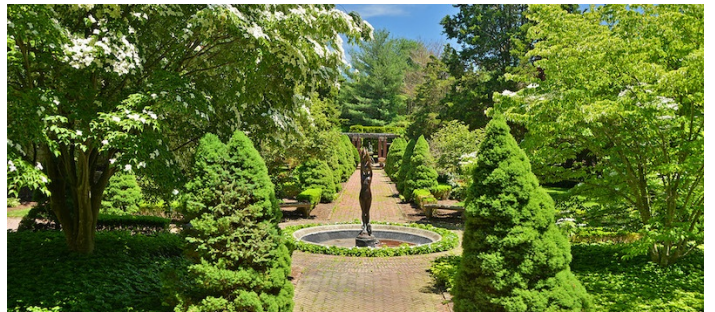
















BEACH, DOCK AND STAIRCASE

