

 LOCATION

Montclair, NJ 07043

 DISTANCE FROM NYC

17 miles

 TAGS

Backyard Lawn, Bathroom, Bay Window, Bedroom, Fireplace, Garage, Kids Room, Kitchen, Living Room, Modern Contemporary, Piano, Porch, Staircase, Staircase Ext, Suburban, Victorian, Wood Floor

 SPECS

4,000 sq ft
9' ceiling height

 POWER

Fuse box in basement

 CATEGORIES

* In the Zone, Event Space, House

Notes

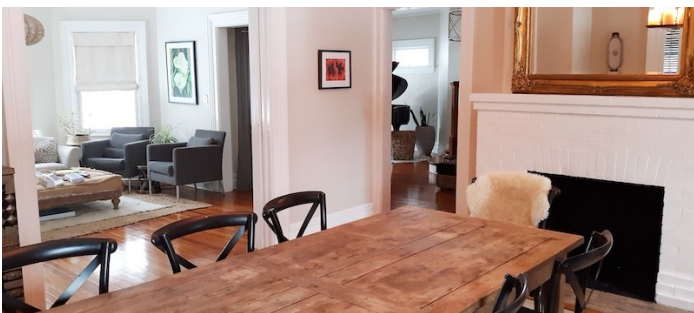
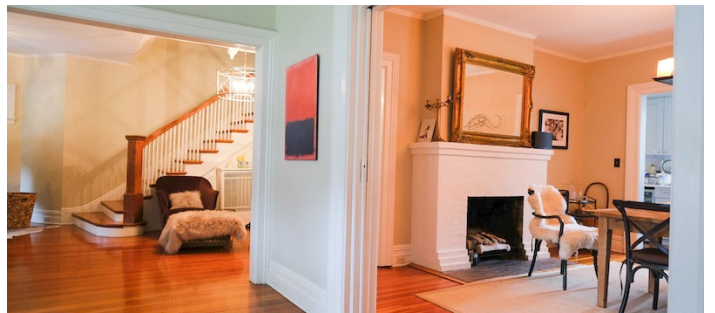
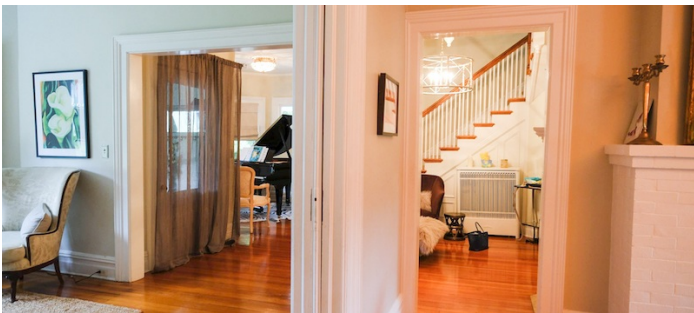
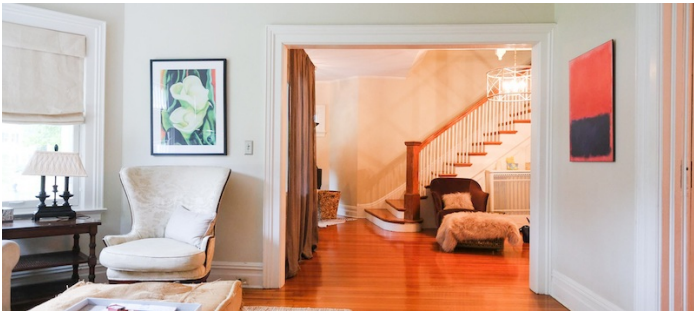
Large Victorian house with wrap around porch, completely updated, 3 floors plus basement, located in Upper Montclair NJ on wide street. House is situated on 1/2 acre lot with large backyard and driveway accommodating up to 5 cars. Large outdoor patio, kitchen, dining area. Open plan layout; mid-century modern or transitional décor.

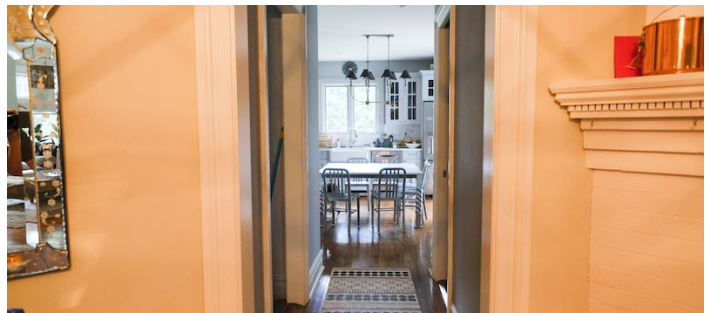
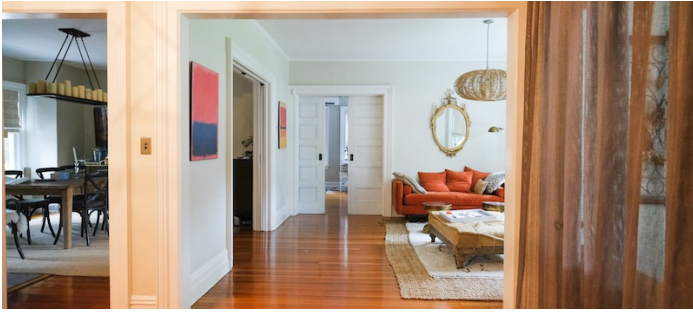
Ground floor has new kitchen and butler's pantry, mudroom, powder room, dining room, foyer, living room and family room. Second floor has two master suites with bathrooms, a study and laundry room. Third floor has three bedrooms and a full bathroom. Basement is finished with a full bathroom but has drop ceilings.





1ST FLOOR

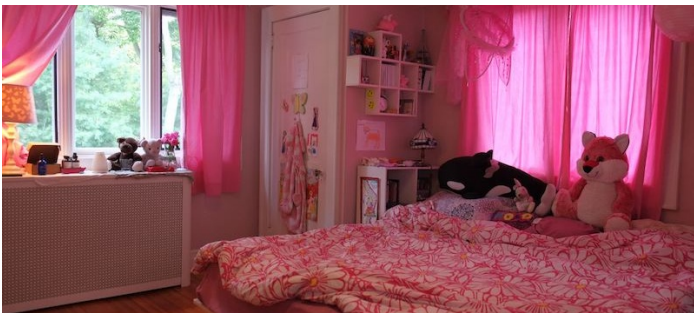
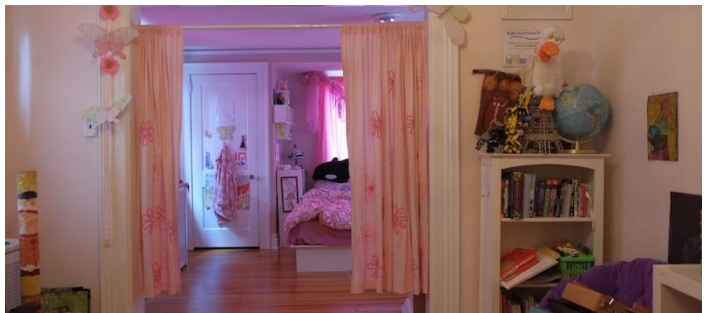
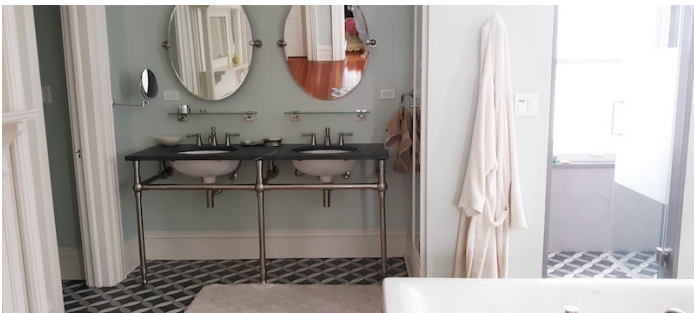


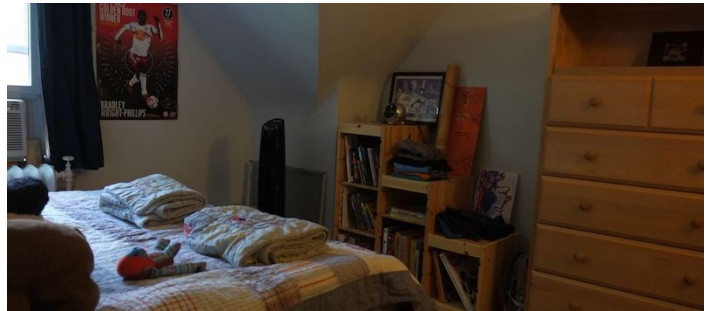
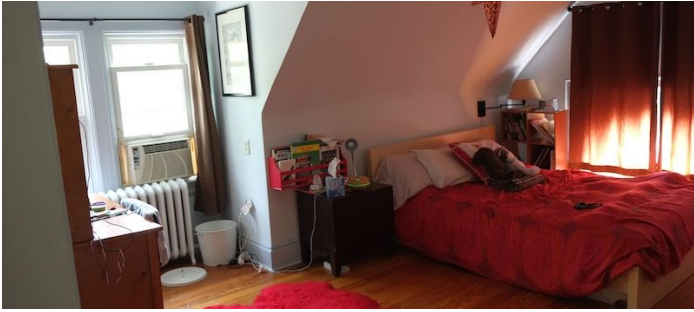
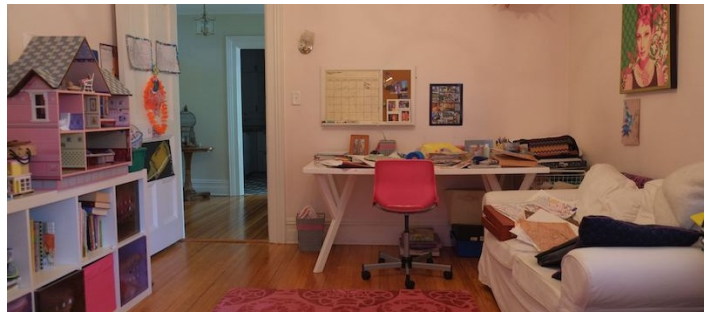
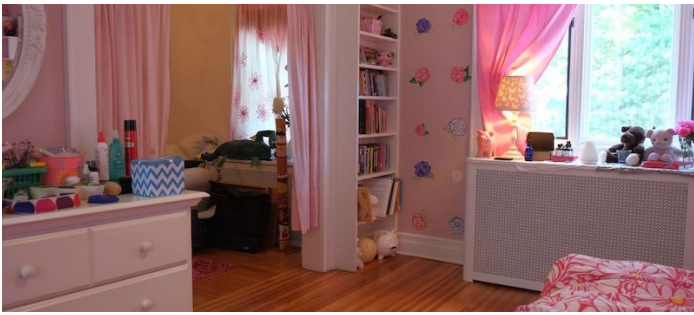


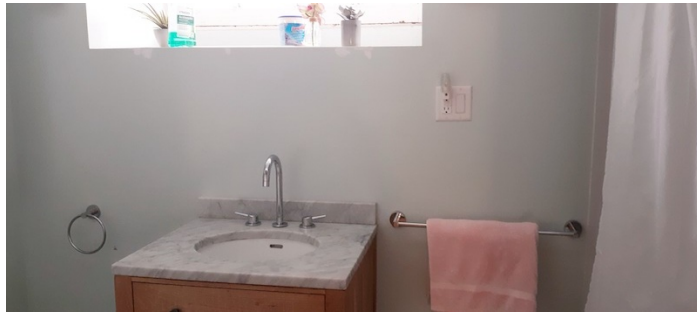




2ND FLOOR







GARAGE

