

 LOCATION

Mamaroneck, NY 10543

 DISTANCE FROM NYC

26 miles

 TAGS

Backyard Lawn, Bathroom, Bay Window, Beach, Bedroom, Billiard Table, Clawfoot Tub, Deck, Dock Pier, Exposed Brick, Fireplace, Garage, Greenhouse, Hammock, Kids Room, Kitchen, Laundry Room, Library Room, Living Room, Ocean or Bay, Piano, Porch, Sauna, Shingle, Staircase, Stone Wall, Terrace Patio, Traditional, Victorian, Water View, Wood Floor

 SPECS

5,180 square feet

9' ceiling height

1 acre

 CATEGORIES

* In the Zone, Beach House, House

Notes

1900's stone and shingle waterfront home designed by renowned architects McKim, Mead and White overlooking Mamaroneck Harbor and the Long Island Sound. Features include a fieldstone porch, private beach, spacious interior rooms, a billiard room, wine cellar and unique architectural details throughout.





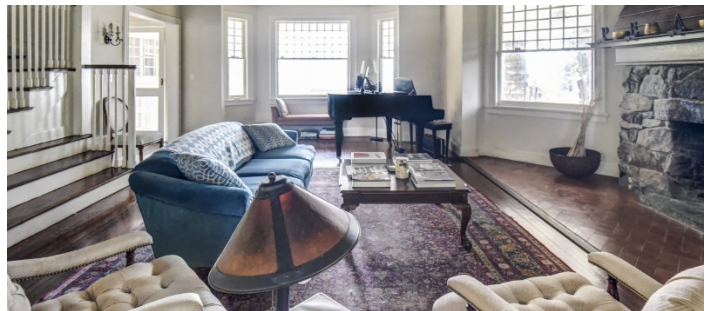
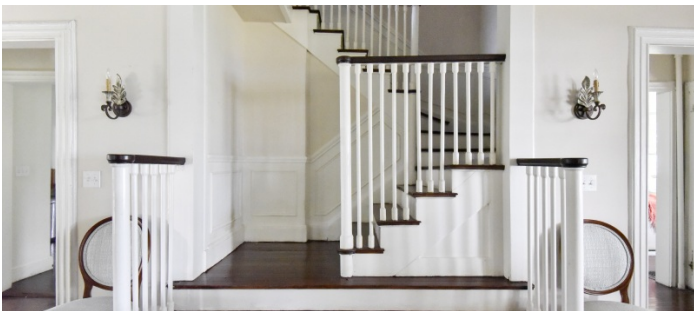


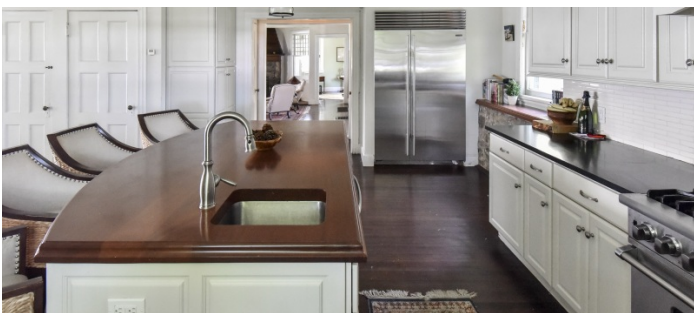
BEACH





FIRST FLOOR

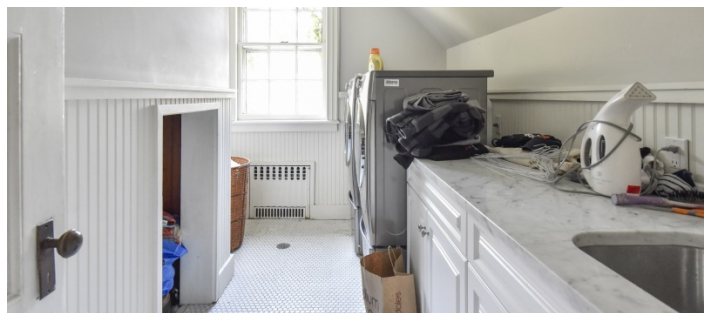
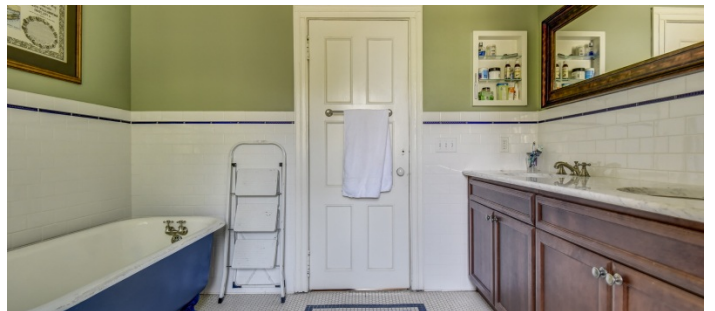


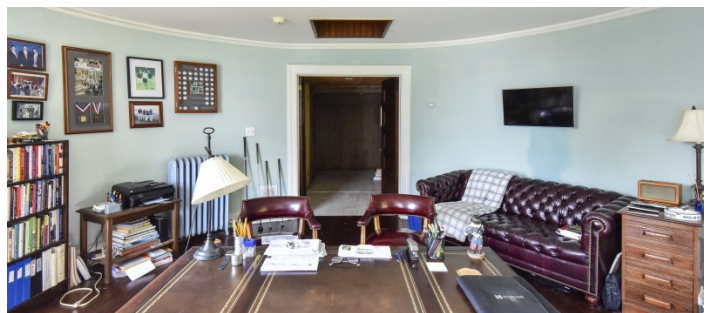
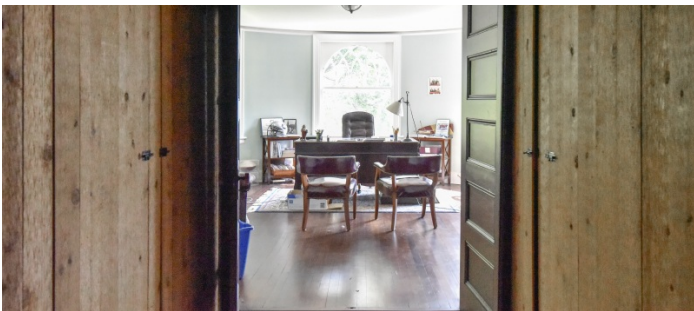
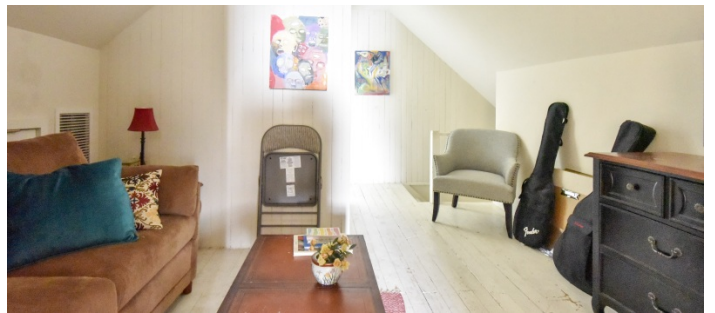


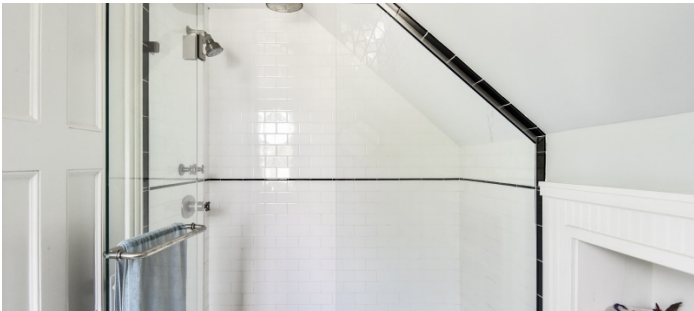
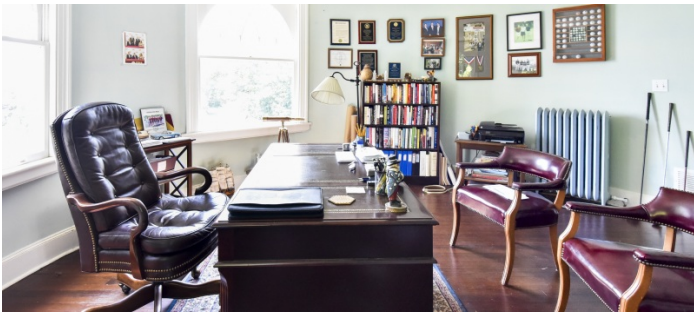












BASEMENT (BILLIARDS, GYM, SAUNA, WINE CELLAR)

