

SOUTH SIDE LOFT - VIEW FULL DETAILS BELOW

LOCATION

New York, NY 10014

TAGS

Bar, Bathroom, Elevator, Empty, Exposed Beam, Modern Contemporary, Raw Industrial, Rustic, White Brick Wall, Wood Floor

SPECS

South Side: 3,200 sq ft
North Side: 2,000 sq ft
Loft 4S: 3,100 sq ft
10' ceiling height (sloped)
Dinner Capacity: 130
Cocktail Capacity: 300

CATEGORIES

* In the Zone, Event Space, Loft

Notes

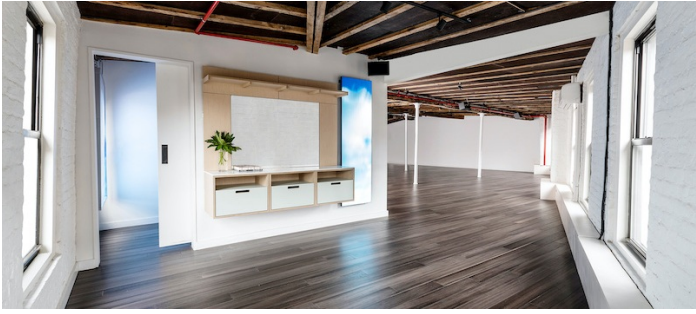
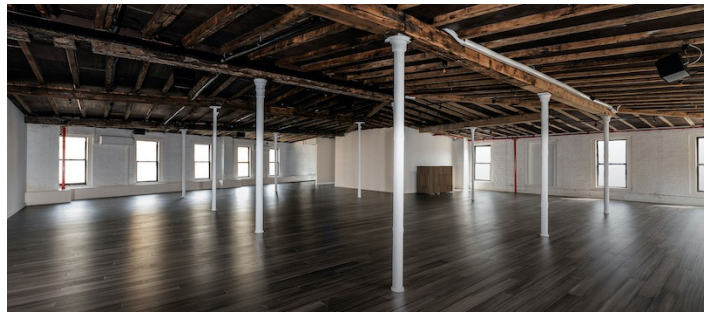
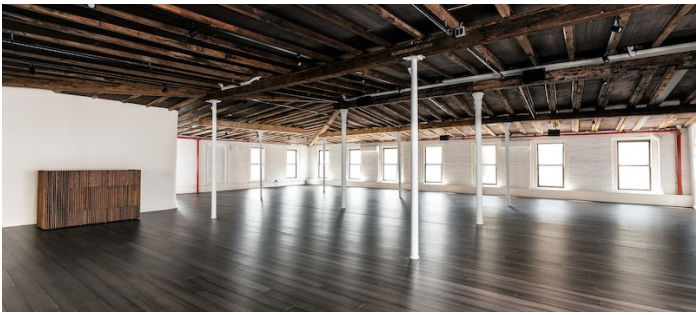
5th floor renovated open plan loft in landmarked 19th century speakeasy. Original ceilings, exposed beams, rafters, white brick walls and full wrap around windows fill the loft with natural light.

The South side loft space features a corner green room along with 4 gender neutral restrooms and views overlooking the heart of the historic Meatpacking District. The North side features a bar & lounge area filled with various pieces of art and furniture, 2 additional restrooms, a full service commercial kitchen (additional fee). The space is experiential, so art and furniture is constantly changing.

Loft 4S is a 3,100 square foot open space with wrap around windows, full HVAC and in-house music system.

Restrictions:

No nailing in walls. No picture animals.



NORTH SIDE TRIANGLE

