

MAIN HOUSE - VIEW FULL DETAILS BELOW

 LOCATION

Pound Ridge, NY, 10576

 DISTANCE FROM NYC
49 miles

 TAGS

Backyard Lawn, Balcony, Bathroom, Bedroom, Colonial Federal, Fence, Fields, Fireplace, Hammock, Kids Room, Kitchen, Laundry Room, Living Room, Modern Contemporary, Piano, Pool Outdoor, Porch, Rustic, Scandinavian, Skylight, Staircase, Stone Wall, Terrace Patio, White Spaces, Wood Floor, Woods

 SPECS

13.8 acres

Main House: 2,000 sq ft

Guesthouse: 1,500 sq ft

 POWER

200 amps

 CATEGORIES

Artist Studio / Gallery, Cottage, House

Notes

There are 3 buildings on this 13.8 acre property.

Main house (2,000 sq ft) is 1840's farmhouse. Has not been renovated since purchase in 2017. Original wide door frames, wide plank wood floors on 2nd floor, original large poured glass windows, 4 bedrooms.

Guesthouse cottage (1,500 sq ft) is a combination of a 1800's small barn and a house attached in the early 1900's. It's been recently updated and features a neutral aesthetic with large picture windows and skylights for maximum natural light intake, 3 bedrooms.

Pool is heated.

Restrictions:

Ceramic studio interior is off limits.

Tool shed and vegetable garden are off limits.

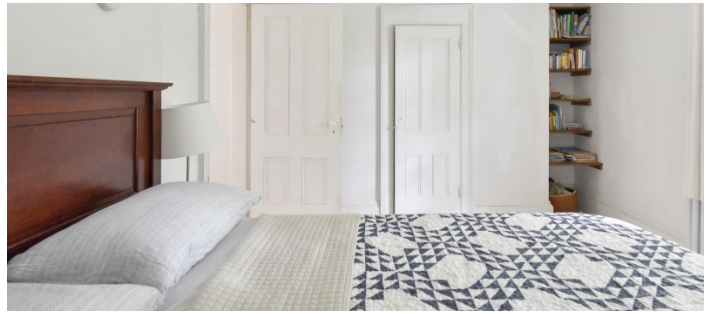
No shoes allowed inside (except talent) - crew should protect floor and wear booties.

Possible to nail or paint walls as long as previously discussed and restored to original condition.





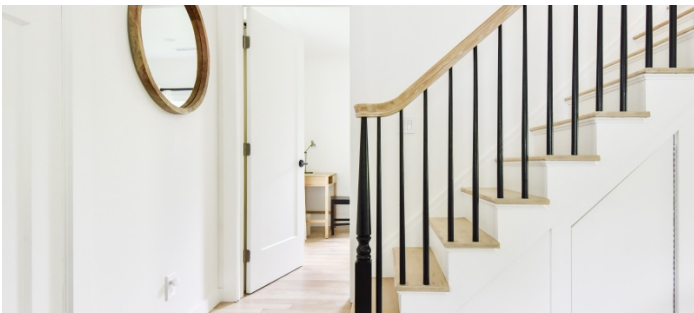
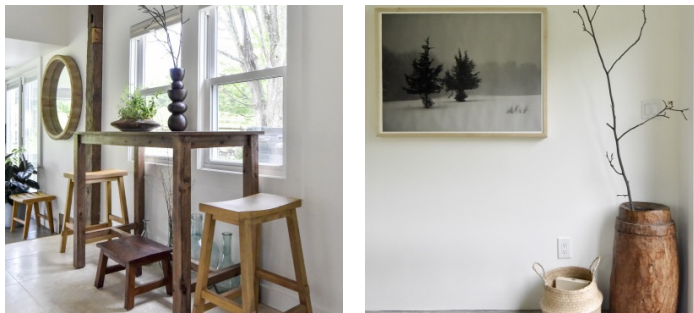


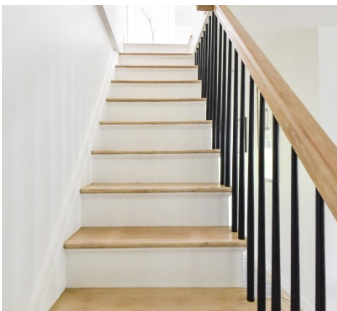
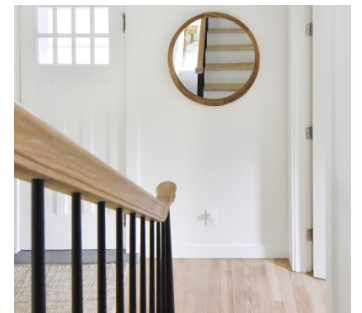
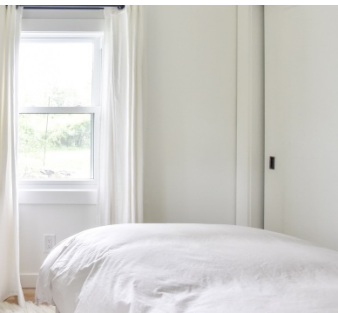
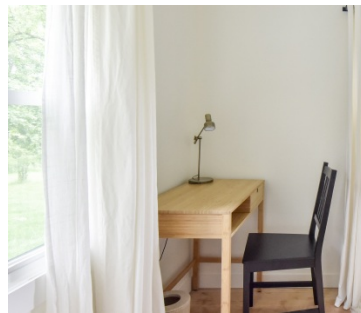


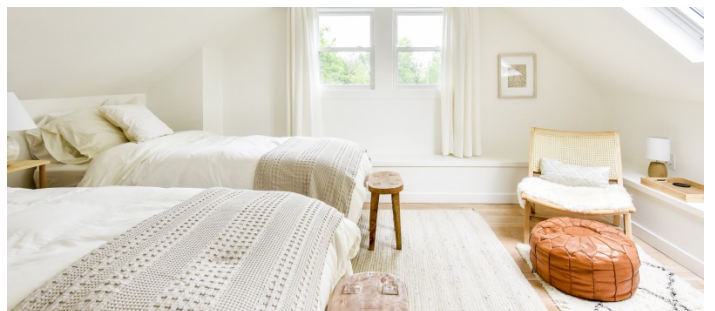
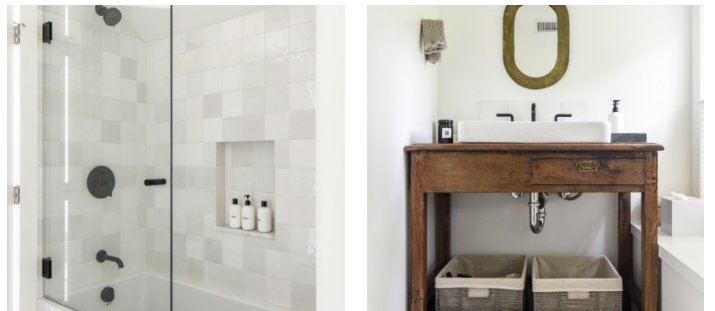


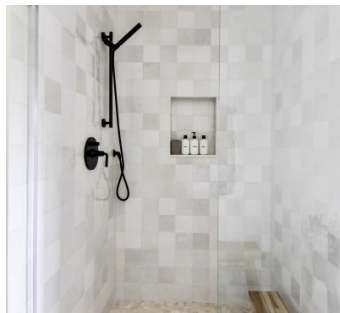
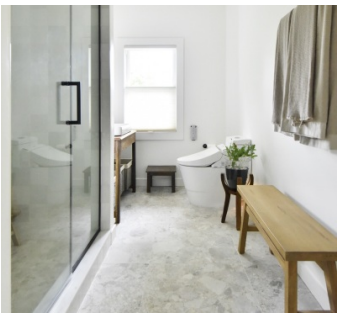
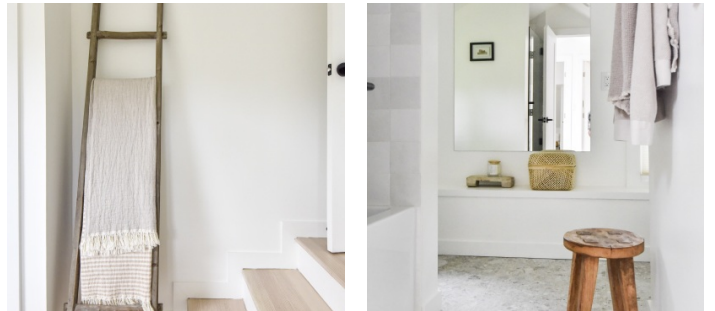
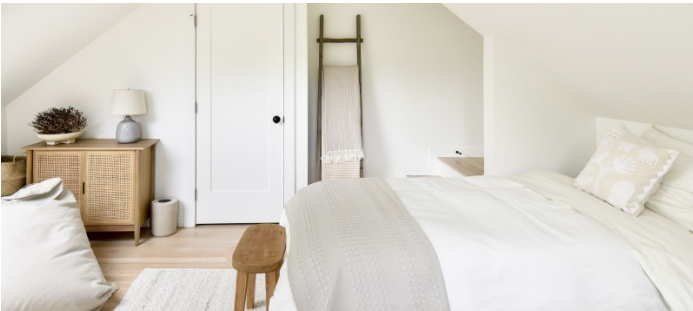












CERAMIC STUDIO EXTERIOR (INTERIOR IS OFF LIMITS)



