

 LOCATION

Sherman, CT 06784

 DISTANCE FROM NYC

70 miles

 TAGS

60's style, 70's style, Backyard Lawn, Balcony, Bar, Bathroom, Bedroom, Carpet, Deck, Fireplace, Garage, Kitchen, Laundry Room, Living Room, Staircase, Staircase Ext, Stone Wall, Suburban, Terrace Patio, Traditional, Woods

 SPECS

2,500 sq ft  
3 acres

 POWER

120V / circuit breakers in laundry room

 CATEGORIES

House

## Notes

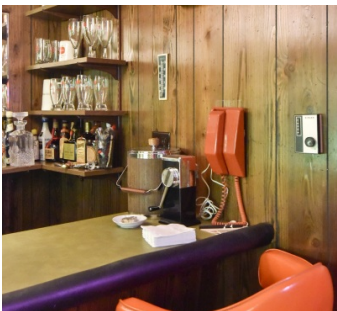
Retro 70's time capsule. Full 2 story brick house with stone entranceway built and furnished in 1972, and for the most part has remained unchanged since then. It has more than 2500 square feet of space with mostly original decor, flooring, carpeting, wallpaper, etc.

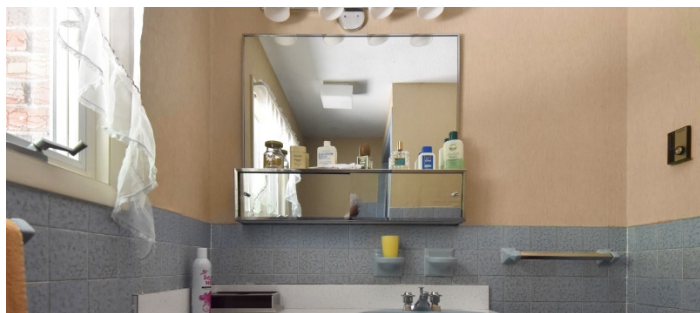
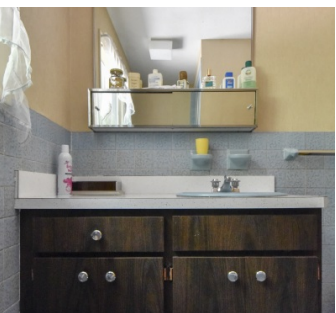
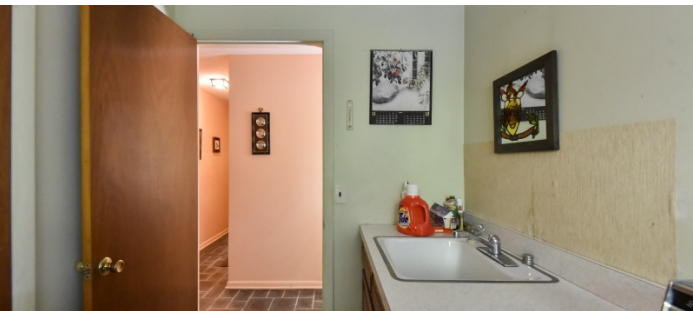
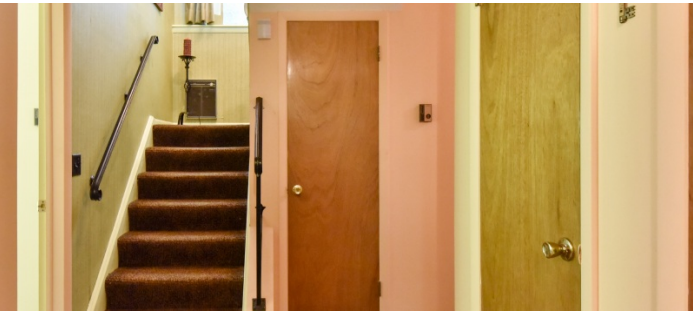
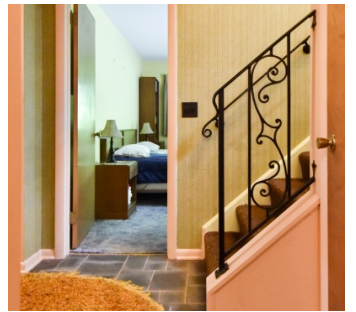
It features a fantastic playroom complete with stocked wet-bar and fireplace, 2 garish bathrooms (one pink, one blue), 2 bedrooms (with original furniture and even some 70's clothes), large living room (with fireplace, oak floors, sliding glass doors with plenty of natural light, couch, chairs, lamps & tables), oak floored dining room (with more sliding glass doors) and kitchen (with original working refrigerator, oven, light fixtures, counters, pots, pans, plates).

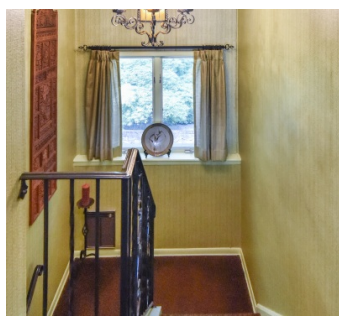
House includes an extra high and secure 20' x 24' empty two-car garage perfect for staging / storage. There is also a large wrap-around deck and flagstone patio. Plenty of free parking along quiet private road. PDF of original blueprints available by request.

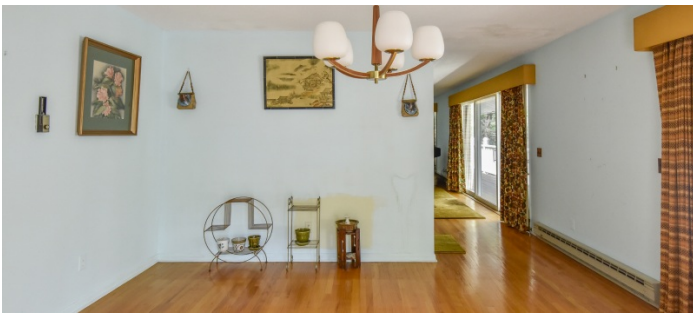
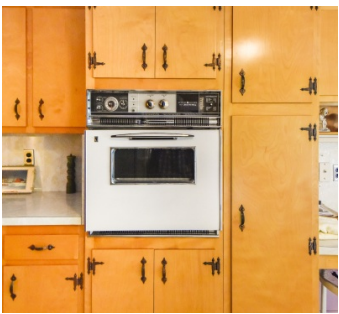
**Restrictions:**

Note - steep driveway.



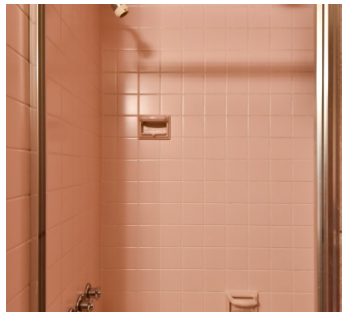


















EXTERIOR



