

APARTMENT 1 - VIEW FULL DETAILS BELOW

 LOCATION

Brooklyn, NY 11213

 SPECS

1,500 sq ft (each apt)
10' ceiling height

 TAGS

Bathroom, Bedroom, City View, Colorful, Eclectic
Quirky, Garage, Kitchen, Living Room, Modern
Contemporary, Parquet, Rooftop, Staircase, Sun Room,
Terrace Patio, White Spaces, Wood Floor

 CATEGORIES

* In the Zone, Apartment

Notes

1920s 2 family home over 2 floors with 2 uniquely decorated, 1500 square foot, apartments that have retained original details from the period.

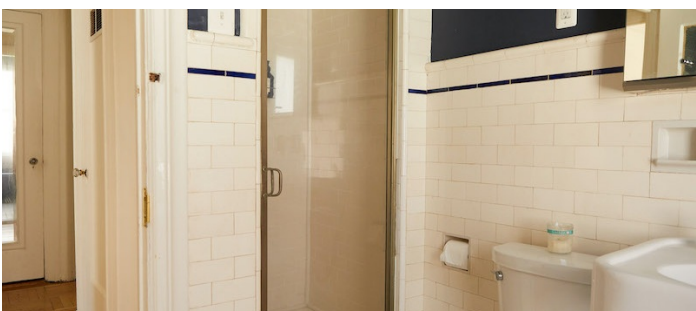
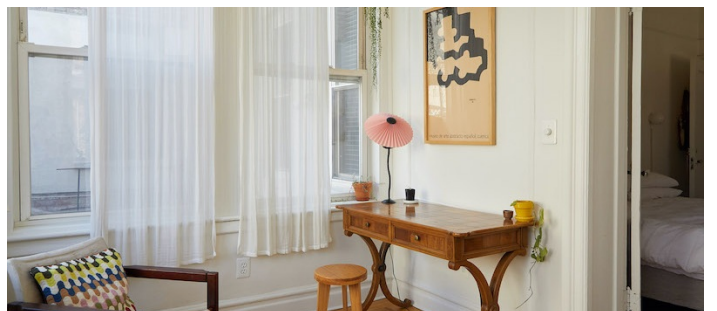
Rooftop is accessible via ladder from Apartment 2.

There is air conditioning in living rooms and bedrooms.

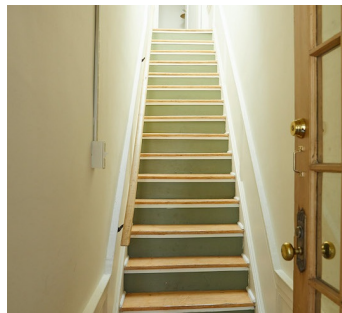
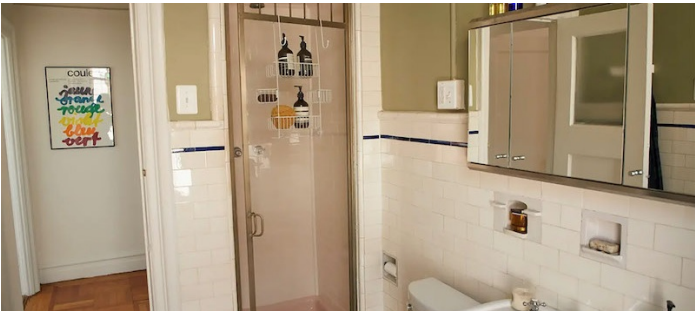
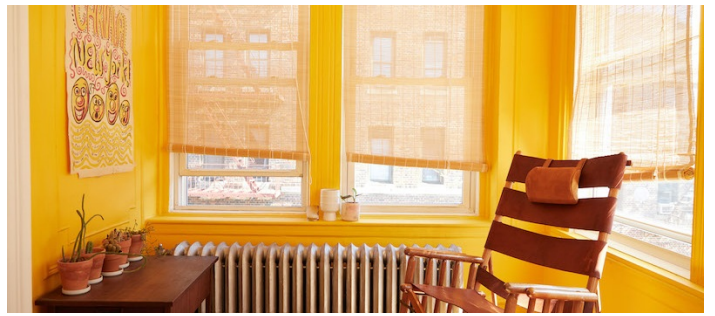
Restrictions:

Areas of use to be determined in advance.

Requests to nail in walls or paint walls must be approved in advance.



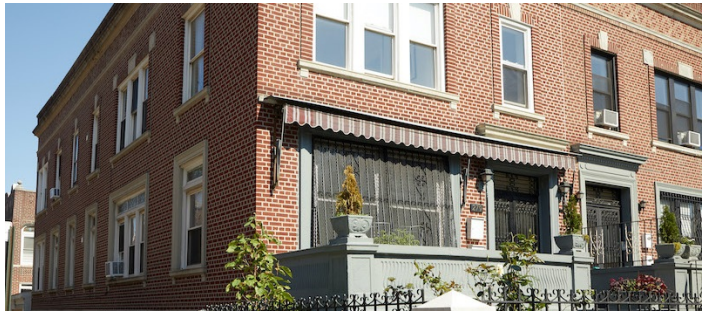
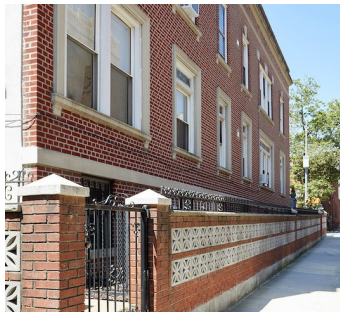




ROOF - ACCESSIBLE VIA LADDER FROM APARTMENT 2



EXTERIOR, PATIO AND GARAGE



FLOORPLAN

